



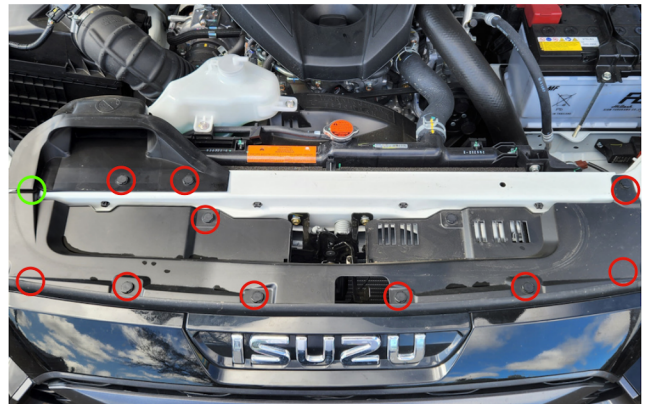
2021+ MU-X
Behind Grille Light Bar

www.trailbait.com.au

1.

Remove clips holding the cover piece in place, including the clip hidden under the air intake (circled in green).

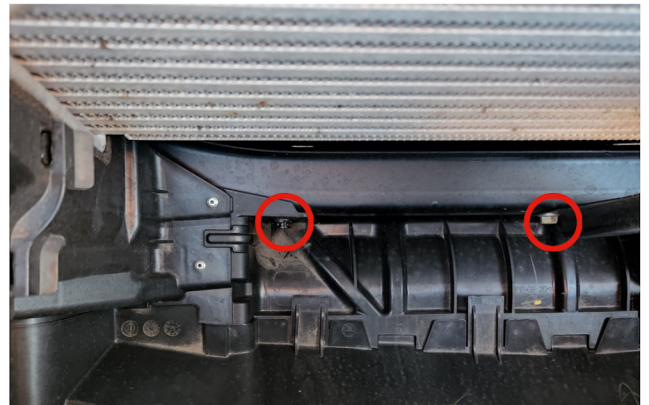
Set the cover piece aside & retain the clips.



2.

At the base of the cavity, remove the black clips and the vertical support bolts (circled in red).

Perform for both driver and passenger side.



3.

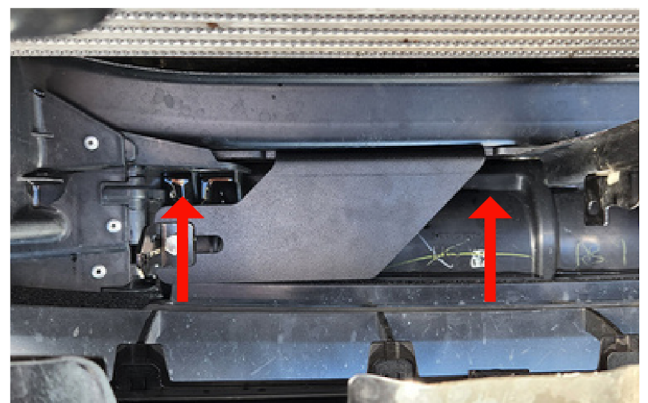
Determine appropriate bracket positioning, either upright or inverted.

Test by fitting light bar to the brackets and check grille & centre support clearance.



4.

Assemble light bar brackets to the TrailBait brackets. Then position the assembly in the vehicle. Line up the holes in the bracket with the vehicle holes. Ensure the outer bracket tab slides behind the plastic and the inner tab slides behind the vertical support.





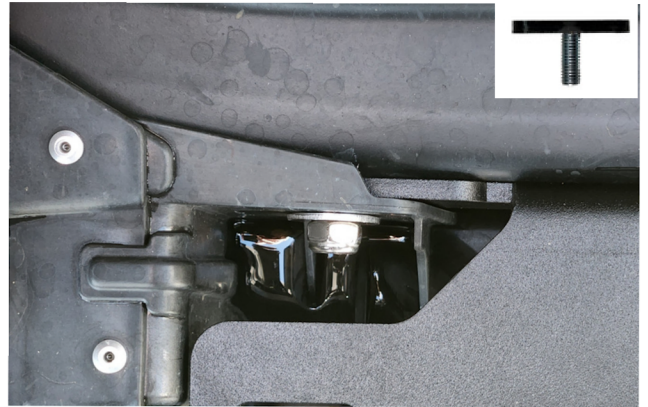
Behind-Grille Light Bar Isuzu MU-X 2021+

www.trailbait.com.au

4.

Push the T-Bolt through from behind, at each end hole.

Attach supplied 13mm nyloc nut & large washer to the T-Bolt. Partially tighten.



5.

Refit bolts removed in step 2, ensuring they feed through the holes in the TrailBait bracket.

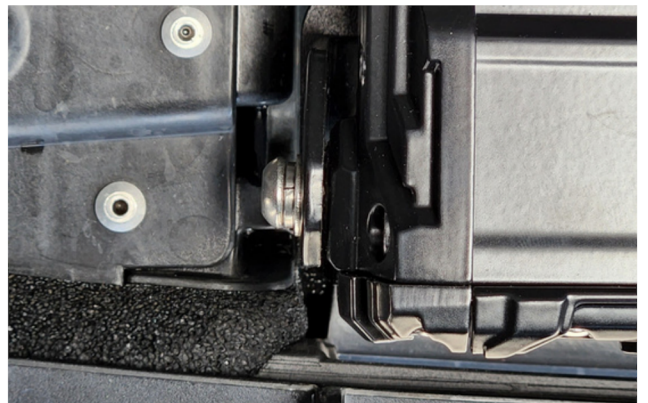
Fully tighten nuts fitted in step 4.



6.

Ease the light into position. Some light bars may need the bumper removed to gain access. Attach allen bolts into the side of the light bar (don't fully tighten).

Tighten bolts fitted in Step 3.



7.

Set the light angle before tightening. We recommend connecting the wiring and testing the light angle at night before completing the rest of the installation.

Tighten bolts fitted in Step 6, then reattach cover and clips removed in Step 1.

Installation complete!

