

MAX

FITTING INSTRUCTIONS

**PART NUMBER
FUS-GWMCAN21**

**APPLICATION
GWM UTE
NPW 2021 ON**

**FITTING TIME
360 MIN**

REV 01





- Do not attach VFPS to the vehicle using anchorages not intended for this purpose (e.g. engine mounting bolts).
- Do not use this product for any vehicle make or model, other than those specified by the VFPS manufacturer.
- Do not remove the plaque or label from the VFPS.
- Do not modify the structure of the VFPS in any way.

Read instructions thoroughly before commencing any work. Check that all parts listed in this manual are included and that there is no damage to any parts.

Always wear safety glasses and hearing protection. Make sure work area is kept clean at all times.

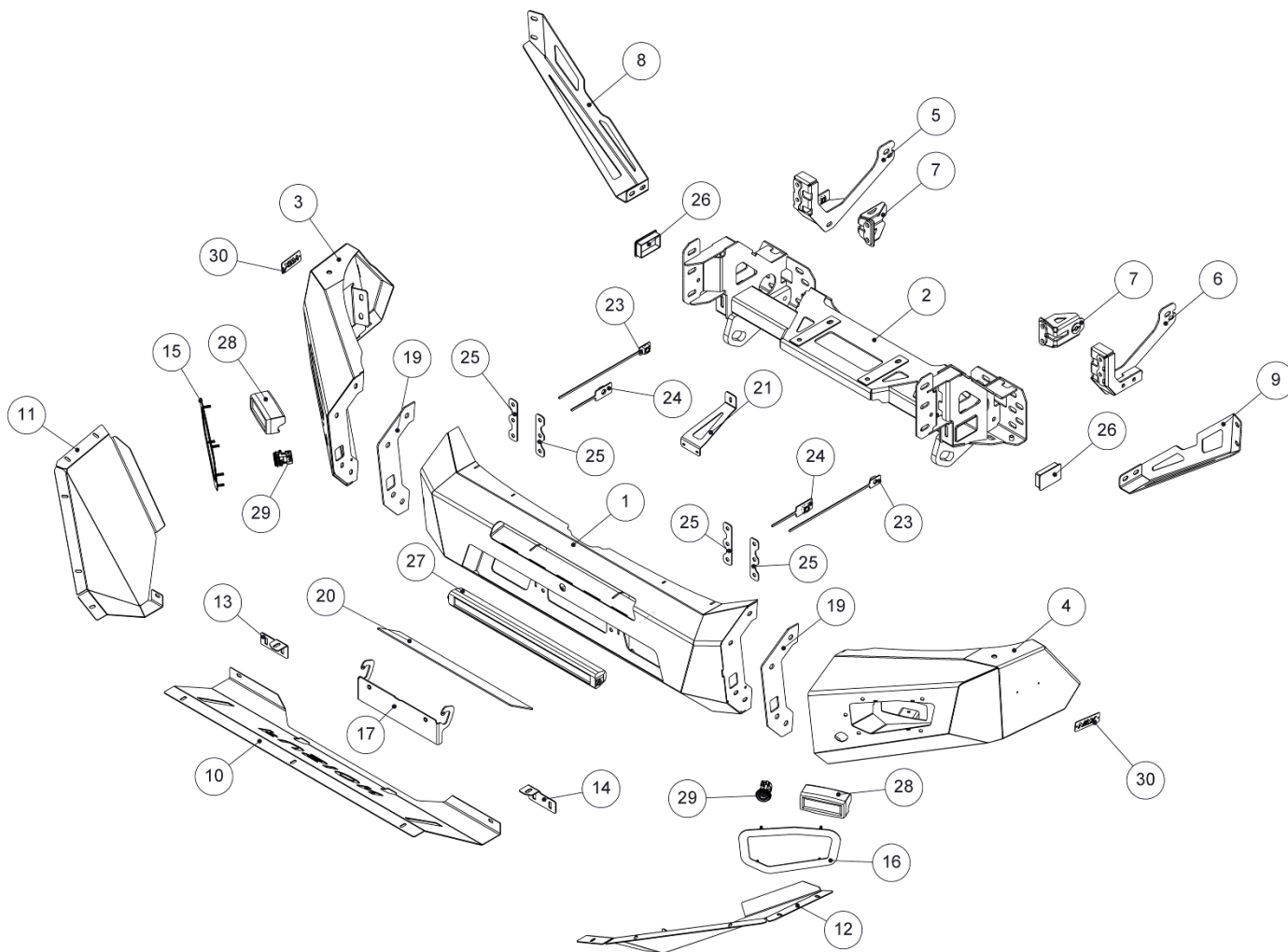
During the installation of this product it may have been necessary to move driver aids. Some of these may need to be re-calibrated after fitment by the dealer. All care is taken to test that these aids will work as the manufacturer intended but not all circumstances can be tested. The driver remains responsible for the vehicle at all times.

Any electrical work required during this installation should be performed by a qualified auto electrician. It is the responsibility of the fitter to ensure all electrical work is correct.

Wash and dry the vehicle regularly using car wash to maintain the appearance of this product.

These instructions are to be given to the customer on completion of the job.

BOLT SIZE	TORQUE Nm	TORQUE ft.lb
M5	5	4
M6	9	7
M8	22	16
M10	44	32
M12	77	57



ITEM	DESCRIPTION	QTY
1	Centre assembly	1
2	Chassis mount	1
3	Wing assembly RH	1
4	Wing assembly LH	1
5	Outer chassis support RH	1
6	Outer chassis support LH	1
7	Inside chassis support	2
8	Wing brace RH	1
9	Wing brace LH	1
10	Stone tray centre	1
11	Stone tray outer RH	1
12	Stone tray outer LH	1
13	Stone tray bracket RH	1
14	Stone tray bracket LH	1
15	Wing garnish RH	1
16	Wing garnish LH	1
17	Number plate bracket	1
18	Camera bracket	1
19	Wing gasket	2
20	Fusion backing plate Orange	1
21	Grille support bracket	1
22	OE Stone tray bracket	1
23	M12 Nut plate 340mm	2
24	M12 Nut plate 150mm	2
25	Chassis plate	4
26	End cap	2
27	LED light bar 20"	1
28	LED scene flood light	2
29	Parking sensor holder	2
30	MAX badge Stainless steel	2
31	Three point wiring loom	1
32	Pinch mould @ 400mm	2
33	Double sided tape 1.5mm x 15mm @ 1200mm	1

ITEM	DESCRIPTION	QTY
FASTENERS		
1	M12 x 1.75 x 35mm Hex bolt	10
2	M12 Spring washer	10
3	M12 Flat washer	16
4	M12 x 1.75 Hex nut	6
5	M10 x 1.25 x 90mm Hex bolt	2
6	M10 x 1.25 x 30mm Hex bolt	14
7	M10 x 1.5 x 35mm Hex bolt	8
8	M10 x 1.5 x 30mm Hex bolt	4
9	M10 Spring washer	12
10	M10 Flat washer	30
11	M10 Flange nut	16
12	M8 x 1.25 x 25mm Hex bolt	2
13	M8 x 1.25 x 20mm Hex bolt	3
14	M8 Spring washer	3
15	M8 Flat washer 22mm	4
16	M8 Flange nut	2
17	M8 Cage nut	2
22	M6 x 20mm Button head screw SS	2
23	M6 x 20mm Hex bolt	19
24	M6 x 16mm Pan head screw	2
25	M6 Spring washer black	17
26	M6 Panel washer black	19
27	M6 Flat washer	14
28	M6 Nylon washer	2
29	M6 Flange nut	3
30	M6 Nyloc nut	12
31	M6 Rivnut	3
32	M6 Cage nut suit 2.5mm	4
33	M6 Cage nut suit 3-4mm	10
34	M5 x 15mm Pan head screw	
35	M5 Flat washer	4
36	M5 Nyloc nut	2
37	4mm x 12.7mm Rivet SS	4



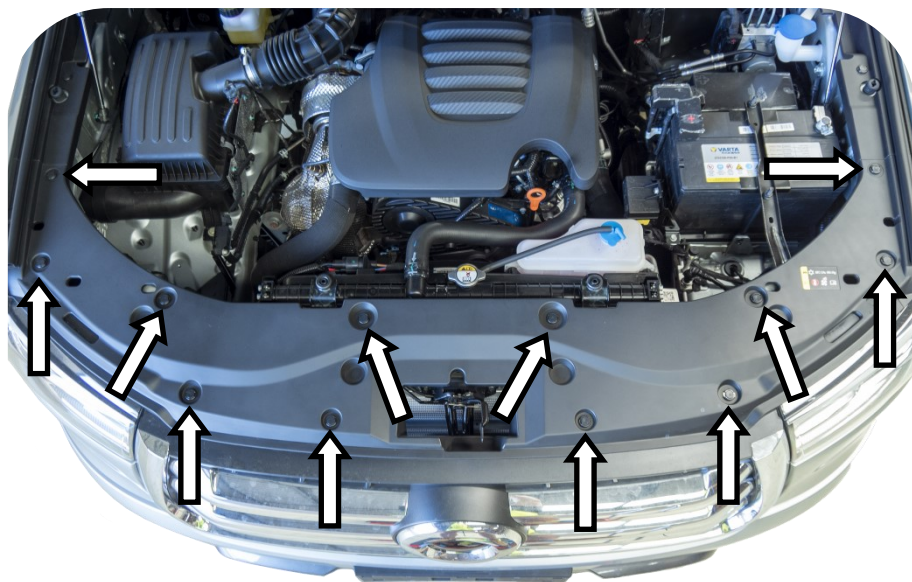
- BASIC TOOL KIT
- TORQUE WRENCH
- DRILL and 10mm DRILL BIT
- OSCILLATING MULTI-TOOL
- FILE OR SANDPAPER
- MASKING TAPE (50mm)
- FELT TIPPED MARKER
- LED TEST LIGHT / MULTIMETER
- SOLDERING IRON
- RUST PREVENTATIVE
- ELECTRICAL TAPE
- CABLE TIES



1. Locate vehicle in a suitable area.
2. Where fitted, remove the number plate.



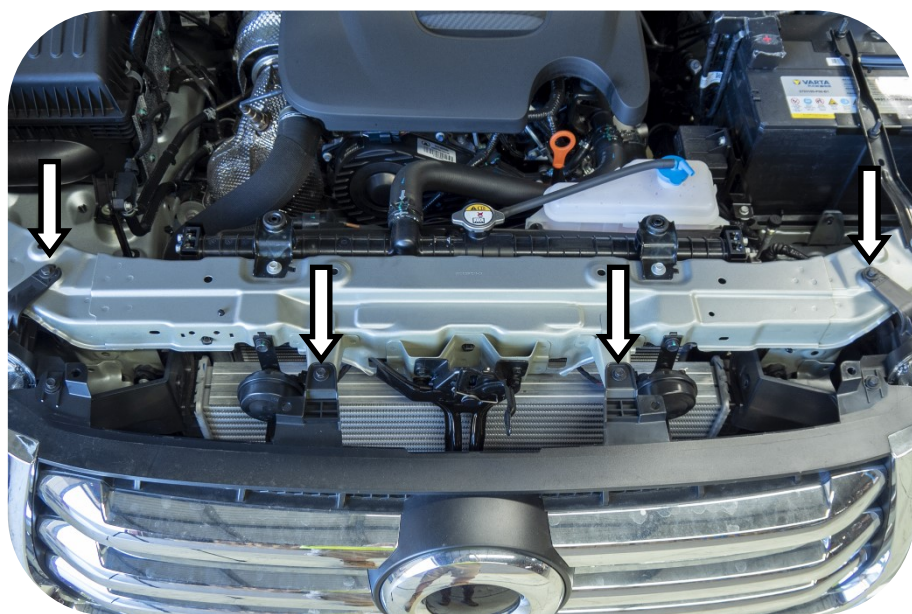
3. Remove and retain the plastic clips securing the radiator top cover.



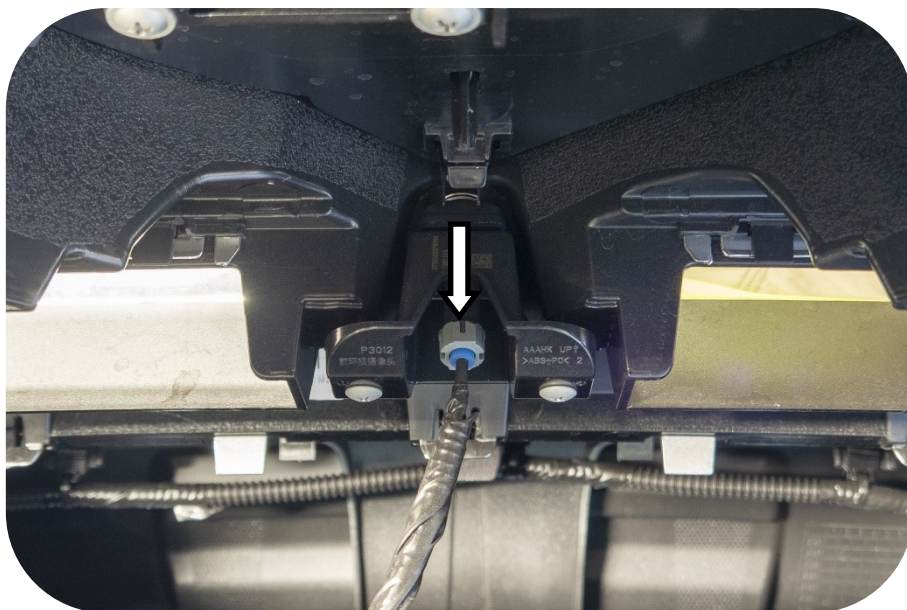
4. Carefully disconnect the rubber strips connected to the radiator top cover.
5. Remove the top cover.



6. Remove and retain the four bolts securing the grille to the radiator support panel.



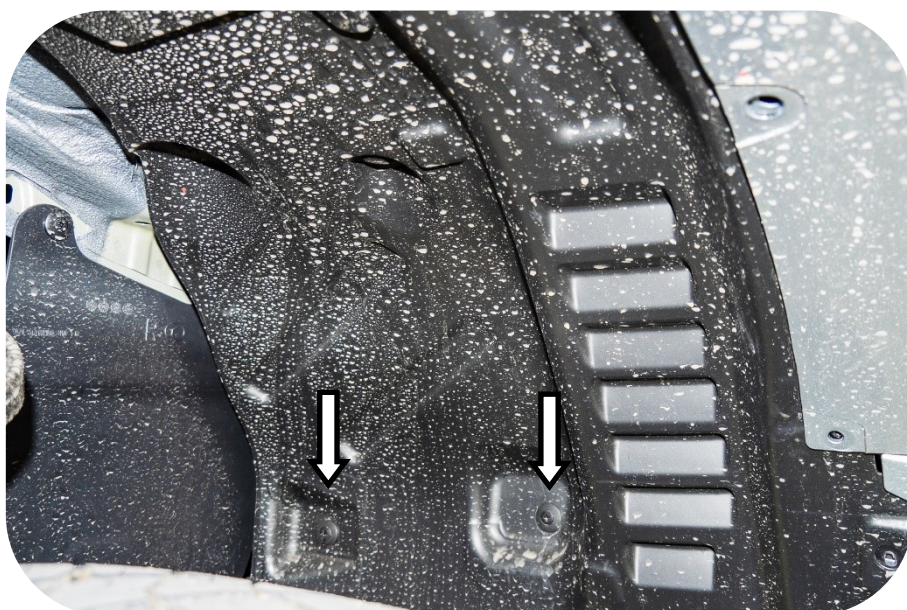
7. Where fitted, disconnect the loom from the front camera.



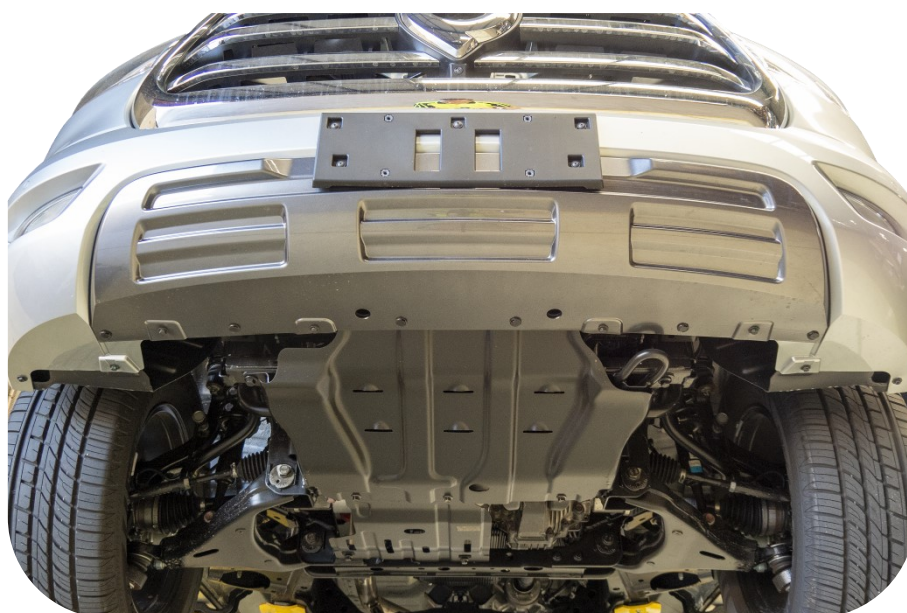
8. Remove the four fasteners (both sides) connecting the bumper to the inner guard. Retain the top fastener.



9. Remove and retain the fasteners securing the inner guards.



10. From underneath, remove and discard the fasteners retaining the bumper bar to the vehicle.



11. Very carefully disconnect the flare from the bumper bar and front half of the guard.

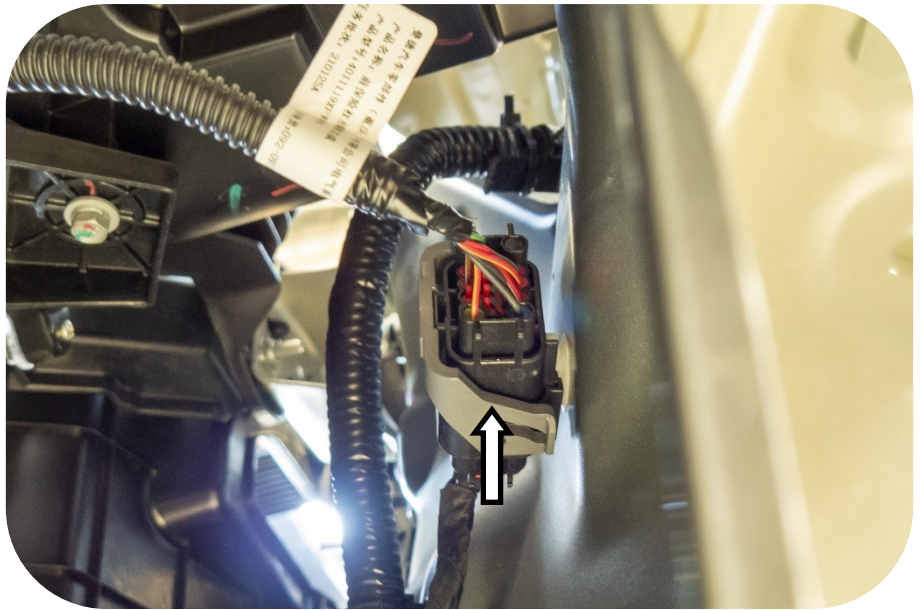
NOTE: There is a tab at the bottom of the flare that locates into the bumper bar.



12. Behind the flares, remove and discard the two screws (each side) securing the bumper bar to the vehicle.

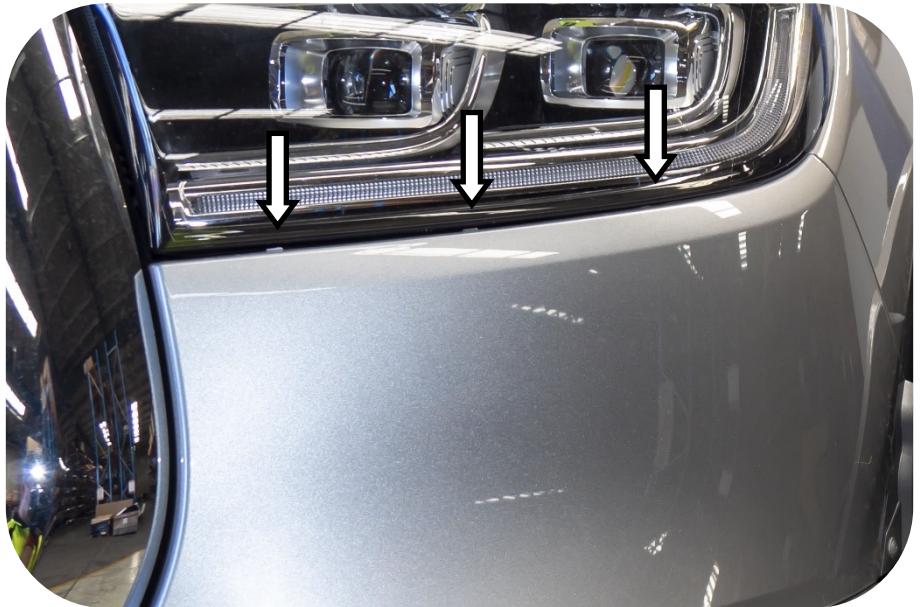


13. From inside the left hand wheel arch, disconnect the loom running to the bumper bar.



14. Under each headlight are three clips which retain the bumper. Use a trim tool to disengage the clips.

NOTE: If you try to pull the bumper bar off without disengaging the clips you will split the bumper bar.



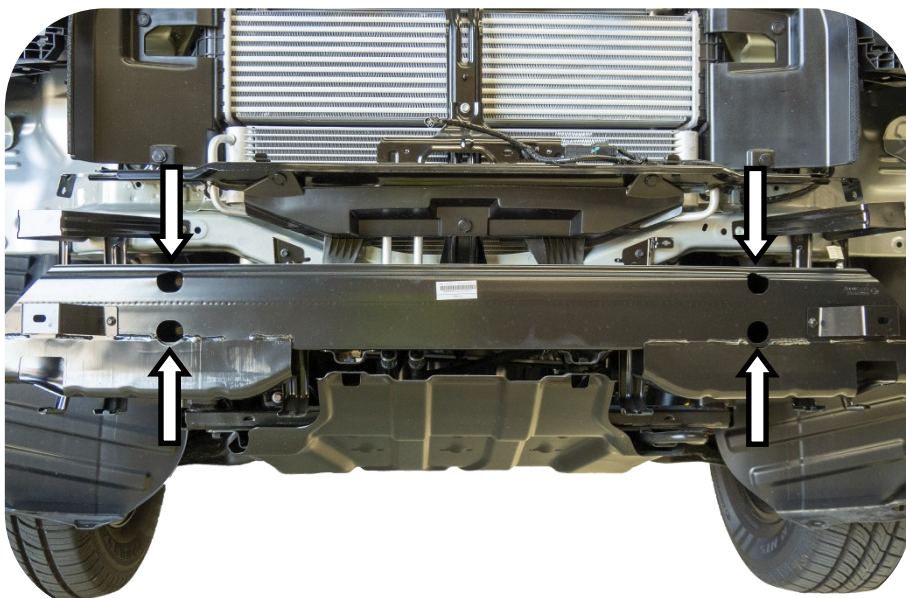
15. Remove the bumper bar and grille assembly from the vehicle.



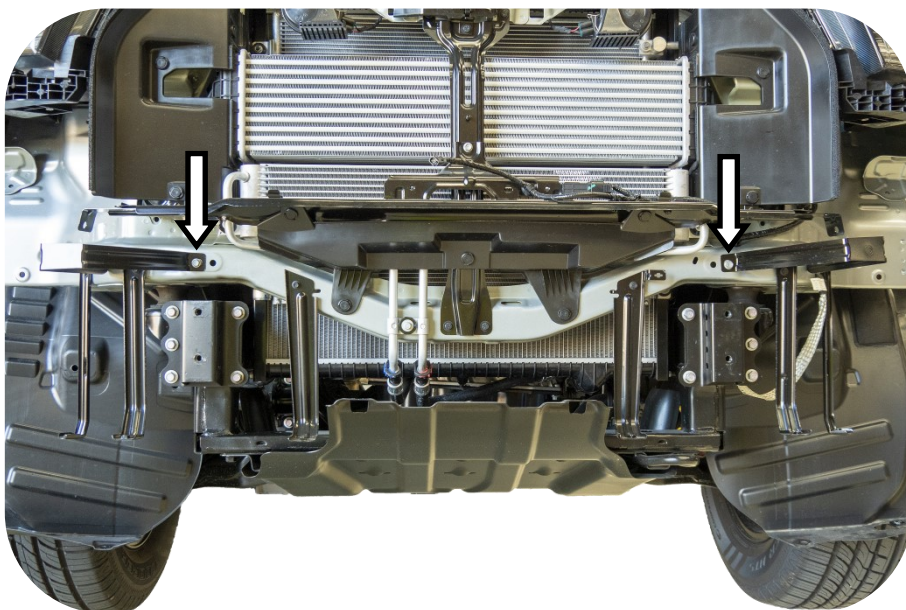
16. Remove and retain the two front bolts securing the front stone tray.



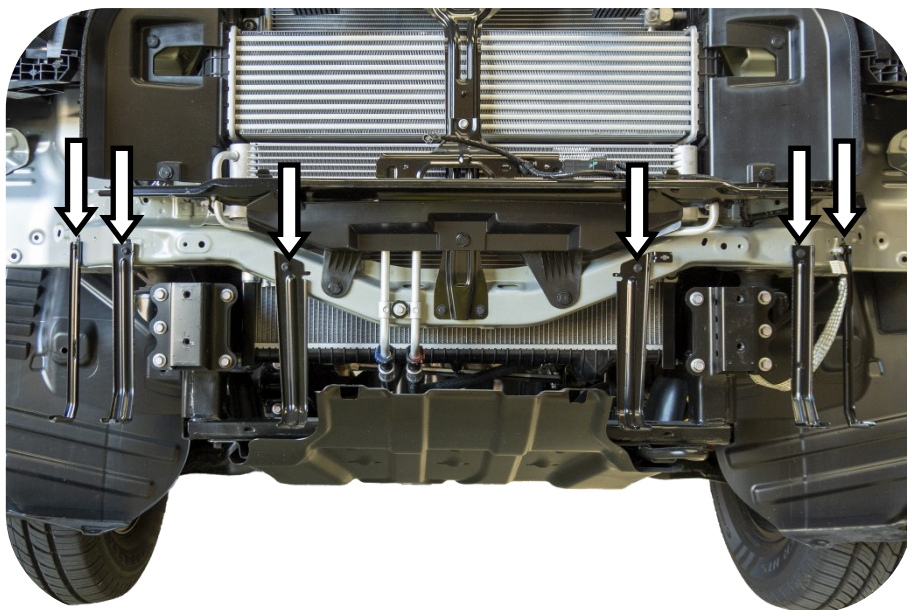
17. Remove and discard the front intrusion beam.



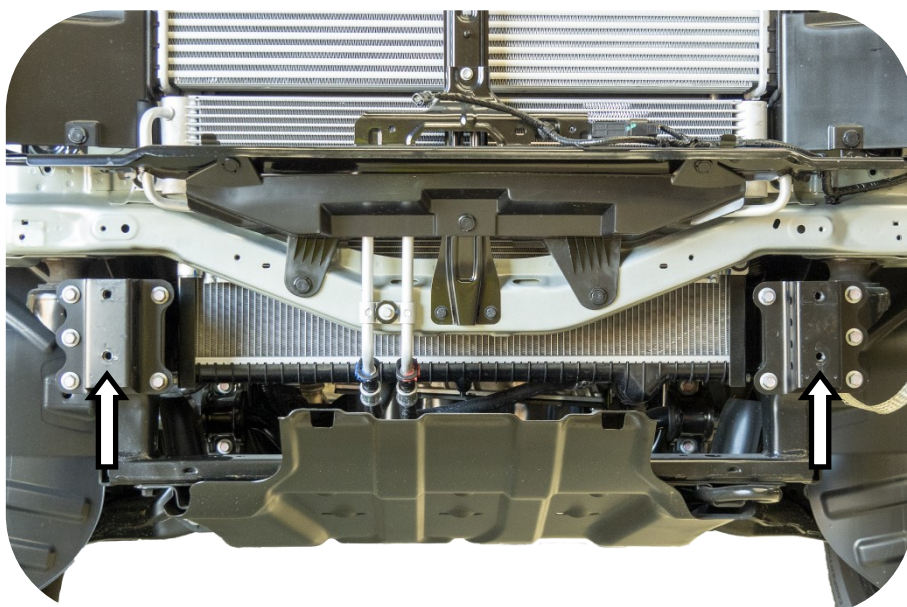
18. Remove and discard the two upper bumper support brackets.



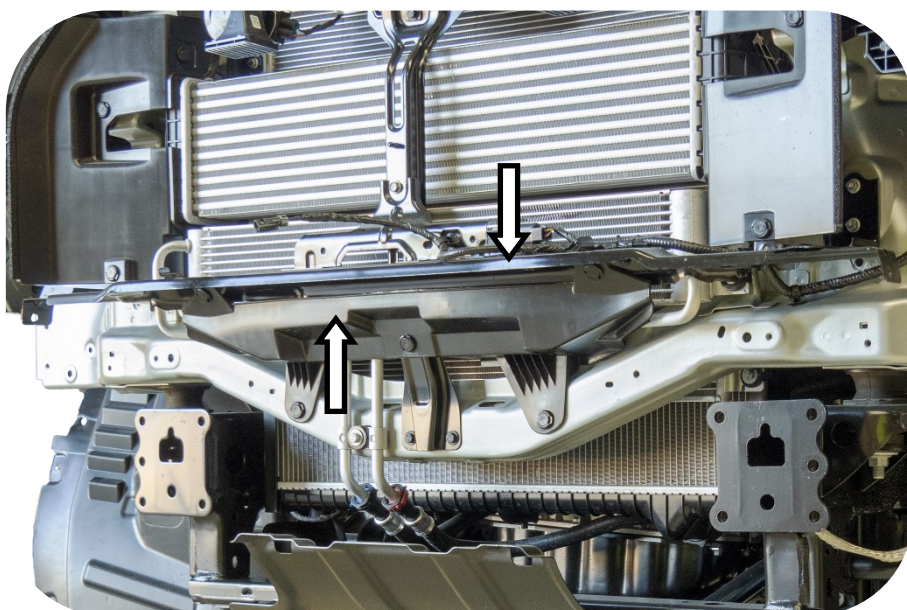
19. Remove and discard the six bumper support brackets.



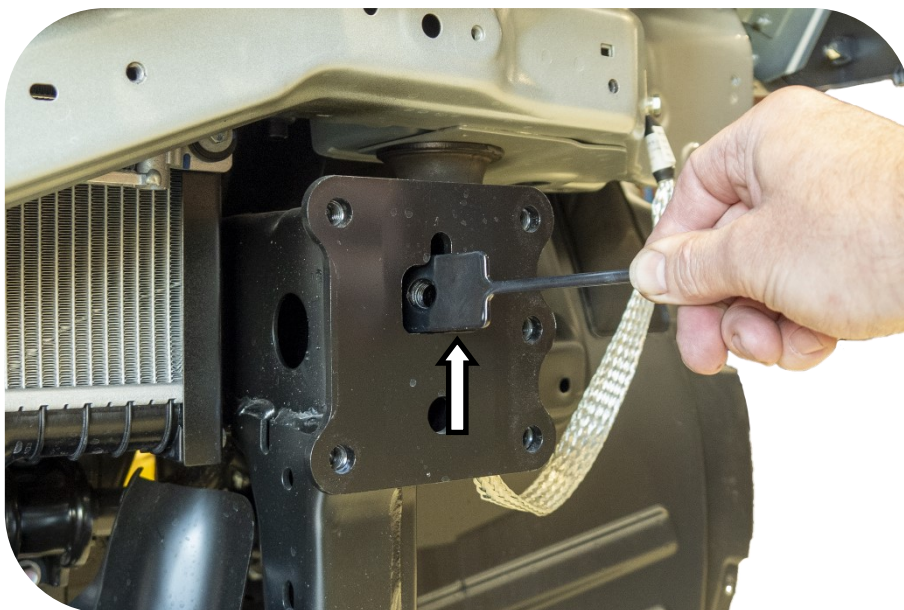
20. Remove and discard the two chassis end brackets. Retain the fasteners for fitment of the chassis mount.



21. If fitting a winch, unclip the looms from the grille support panel. Remove and discard the support panel.

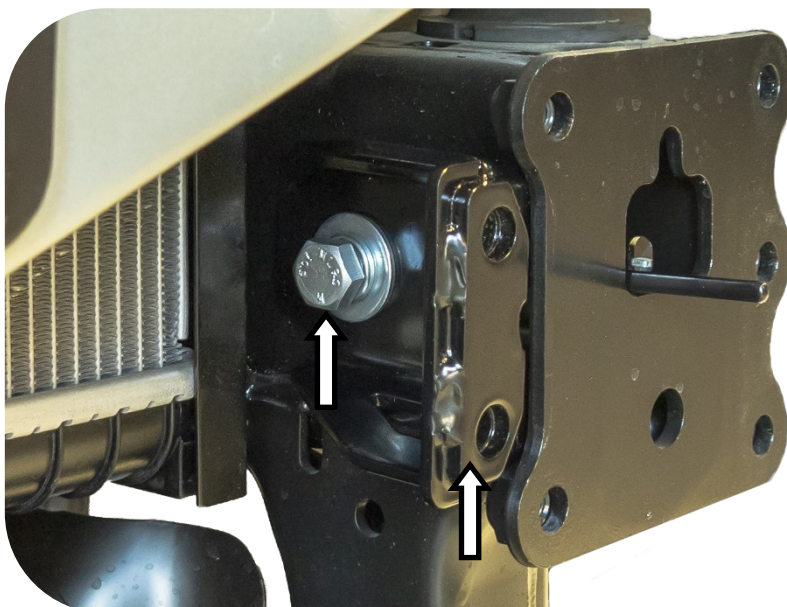


22. Insert the 150mm nut plates (item 24) through the chassis endplates.



23. Fit the inner chassis support brackets (item 7) to the inside of the chassis rails. Secure to the nut plate installed prior using two M12 x 35mm hex bolts, M12 spring and flat washers.

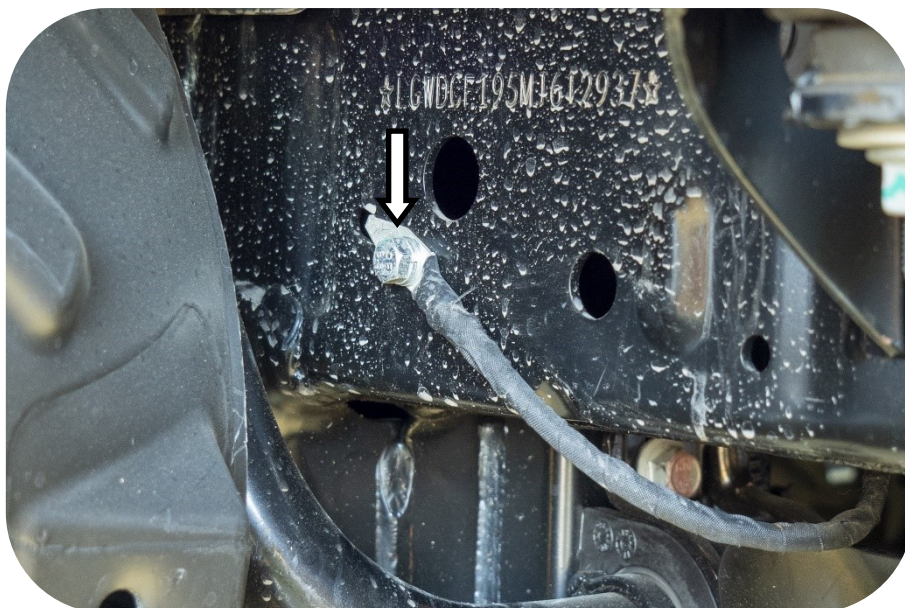
Do not tighten.



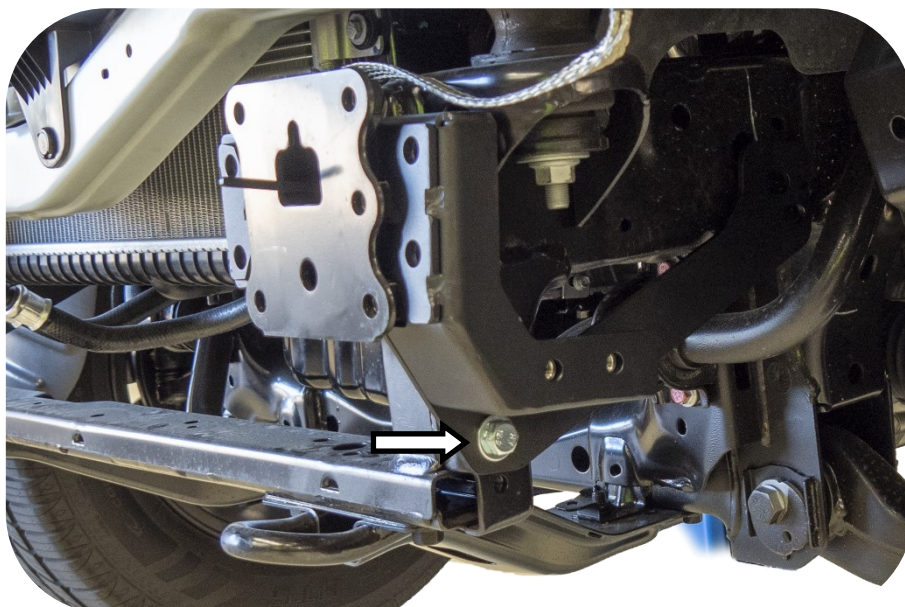
24. Remove the earth strap from the left hand chassis rail, discard fastener.



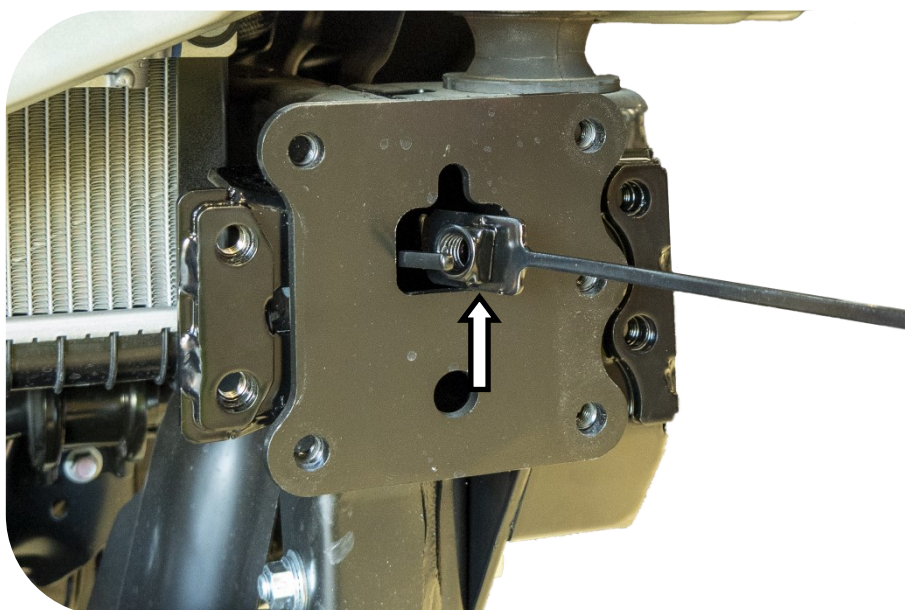
25. Remove the earth strap from the right hand chassis rail. Retain the fastener for re-fitment.



26. Fit the chassis support brackets (items 5 & 6) to the vehicle using two M10 x 90mm hex bolts, four M10 flat washers and two M10 flange nuts. **Do not tighten.**



27. Insert the 340mm nut plates (item 23) through the chassis endplates.

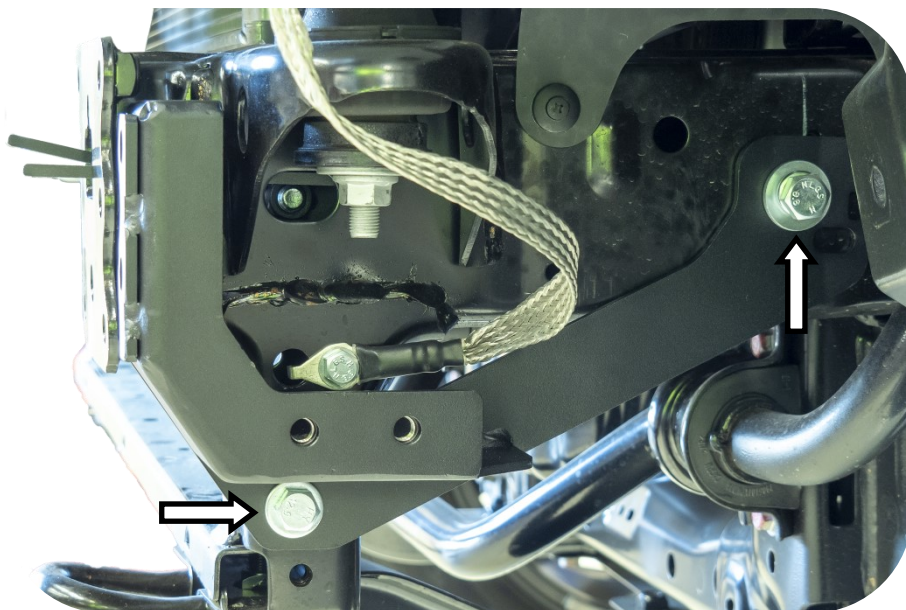


28. Secure the left hand chassis support bracket with a M12 x 35mm hex bolt, M12 spring and flat washers.

Do not tighten.

29. Enlarge the earth strap hole. Re-fit the earth strap to the threaded hole beneath the front body mount using a M8 x 20mm hex bolt and M8 spring washer.

NOTE: Ensure the earth strap is correctly earthed.

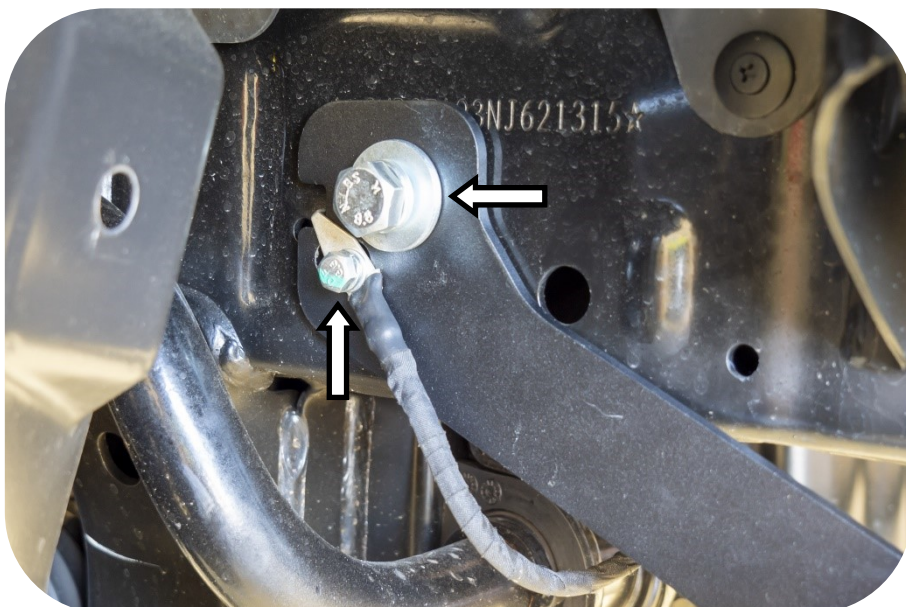


30. Secure the right hand chassis support bracket with a M12 x 35mm hex bolt, M12 spring and flat washers.

Do not tighten.

31. Re-fit the earth strap to the original location.

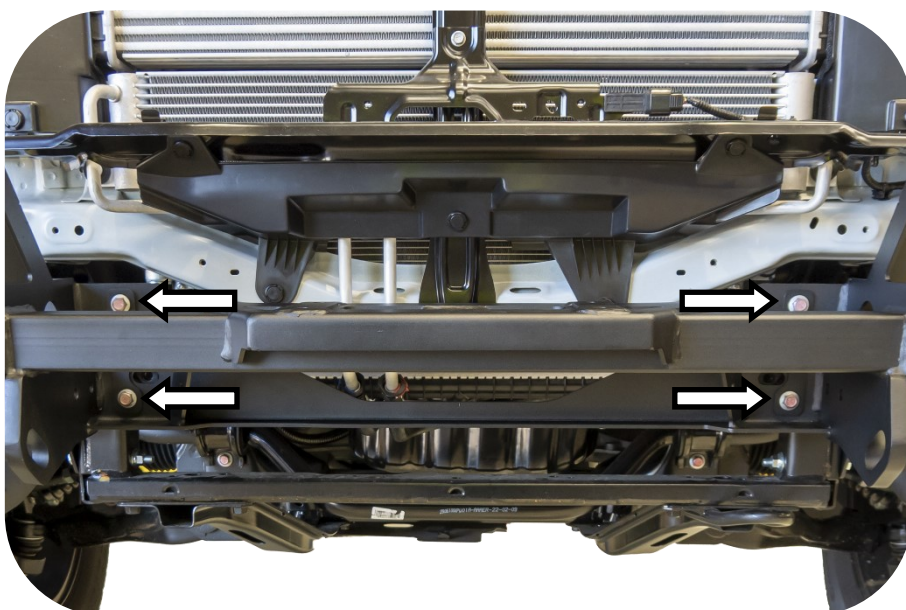
Do not tighten.



32. Install the chassis mount (item 2) onto the chassis end plates.

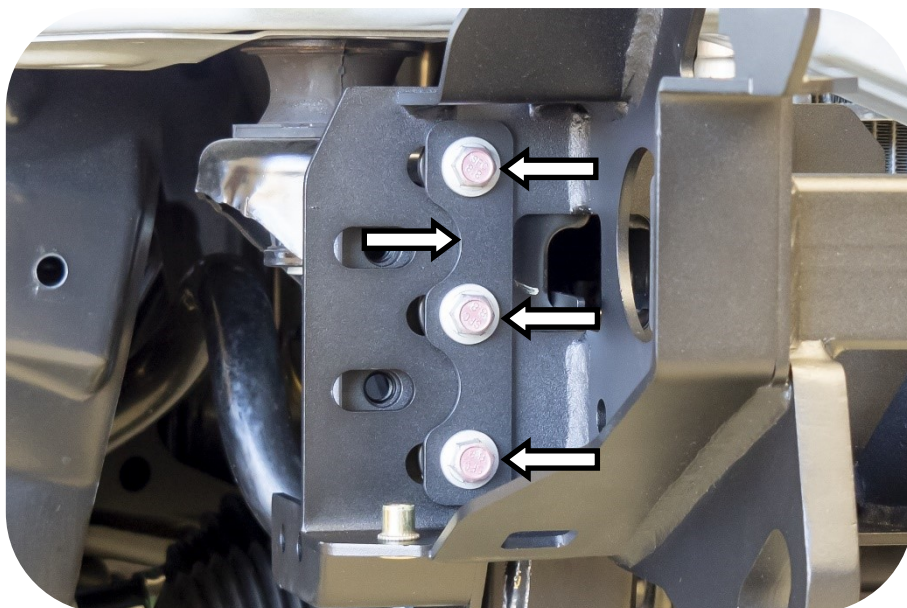
33. Secure the inside of the chassis mount using the original bolts and two chassis washer plates (item 25, not shown).

Do not tighten.



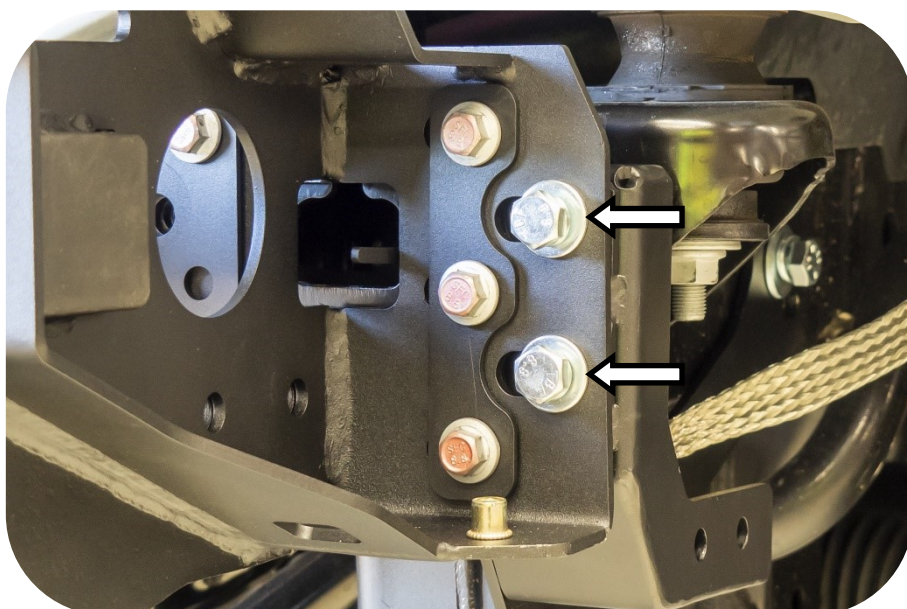
34. Secure the outside of the chassis mount using the original bolts and two chassis washer plates (item 25).

Do not tighten.



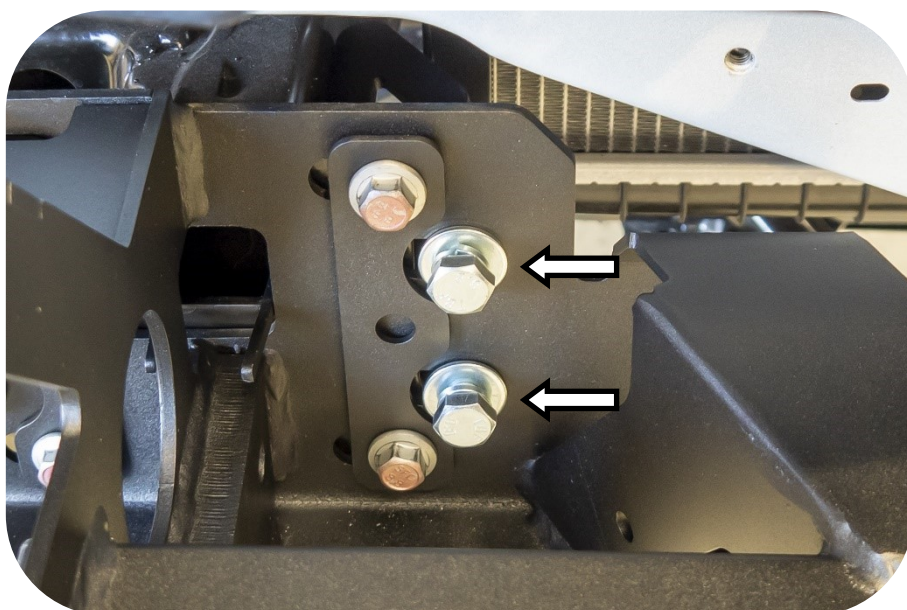
35. Secure the chassis mount to the outer chassis support brackets with four M10 x 35mm hex bolts, M10 spring and flat washers.

Do not tighten.



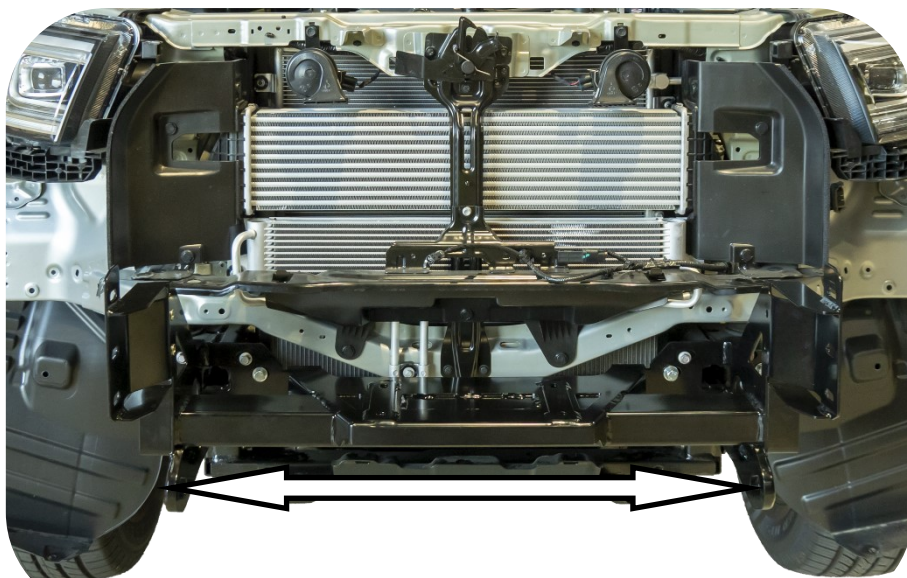
36. Secure the chassis mount to the inner support brackets with four M10 x 35mm hex bolts, M10 spring and flat washers.

Do not tighten.



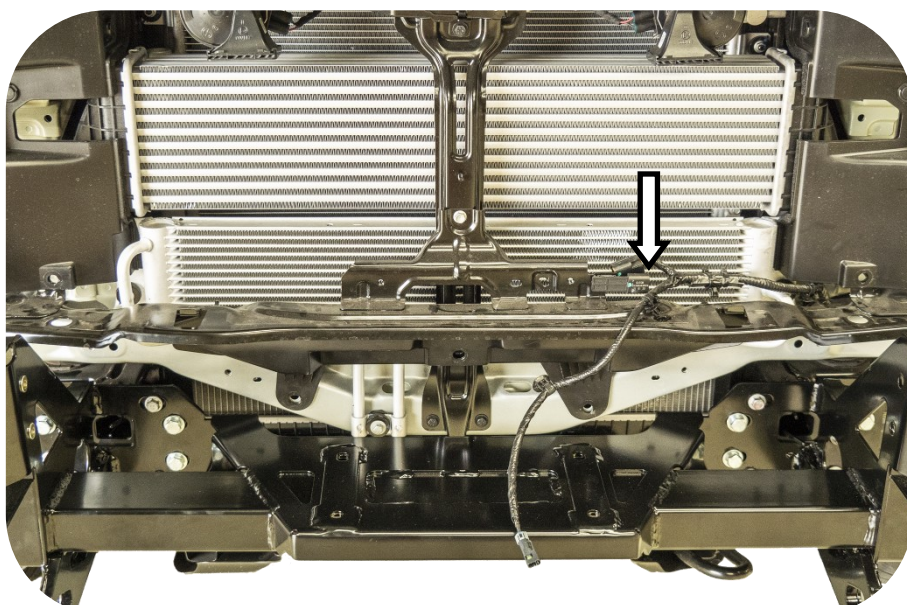
37. Align the chassis mount so that it is positioned evenly to the body of the vehicle.
38. Tighten all fasteners to the correct torque.

NOTE: It is important that the earth strap connections are correctly earthed.



39. Unclip the front camera loom from the grille support.

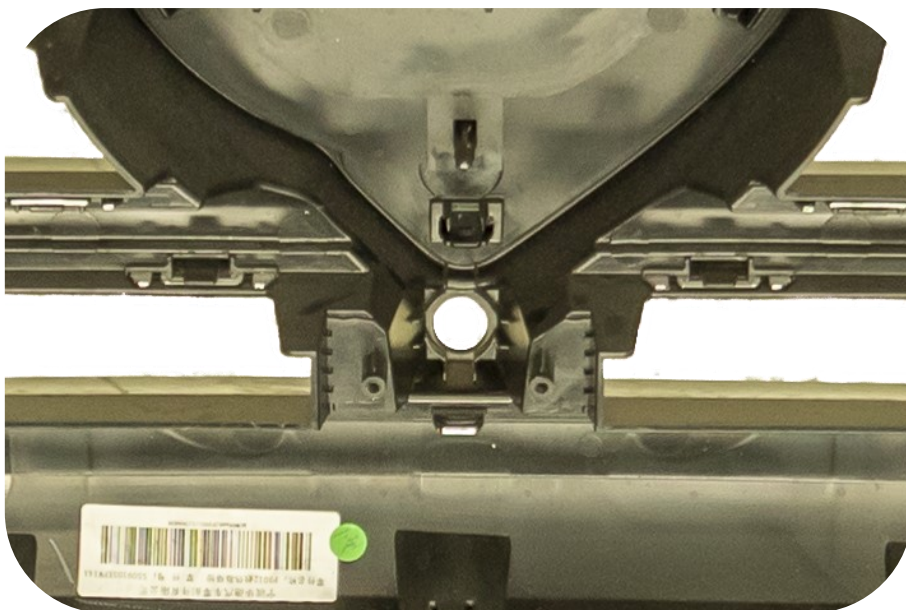
NOTE: If fitting a winch, the grille support panel was removed in step 21.



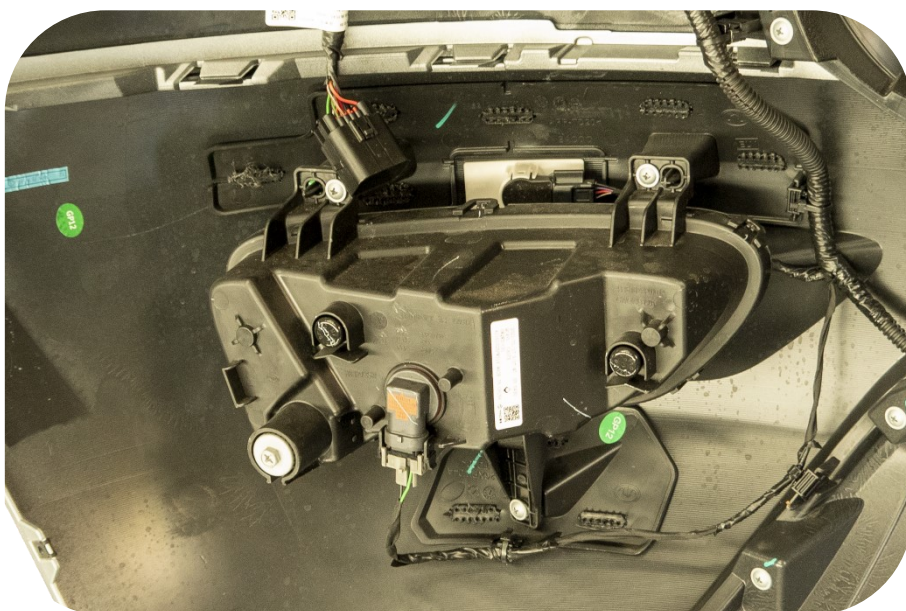
40. If you are fitting a winch, do so now following the instructions supplied with the winch.



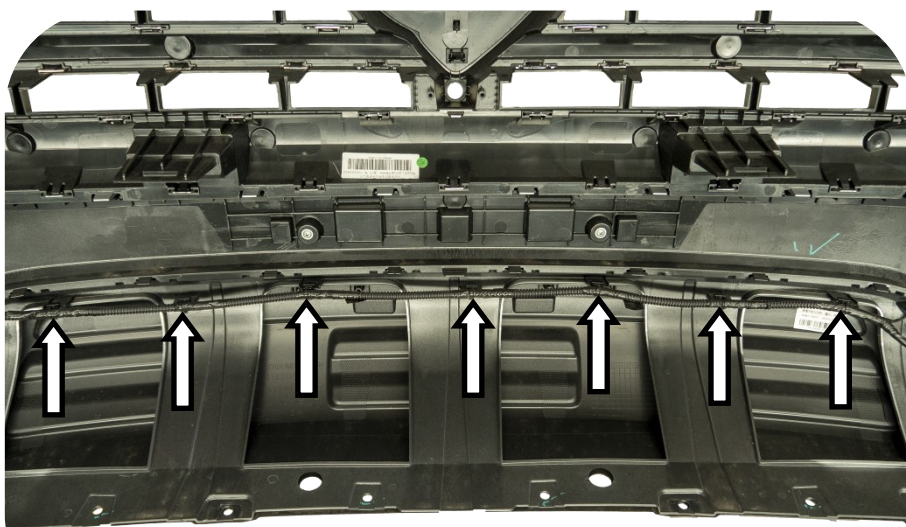
- 41. Remove the front camera, or camera blank. Retain the screws to mount the grille support bracket.



- 42. Where parking sensors are fitted, remove the fog lights from the bumper bar to gain access.

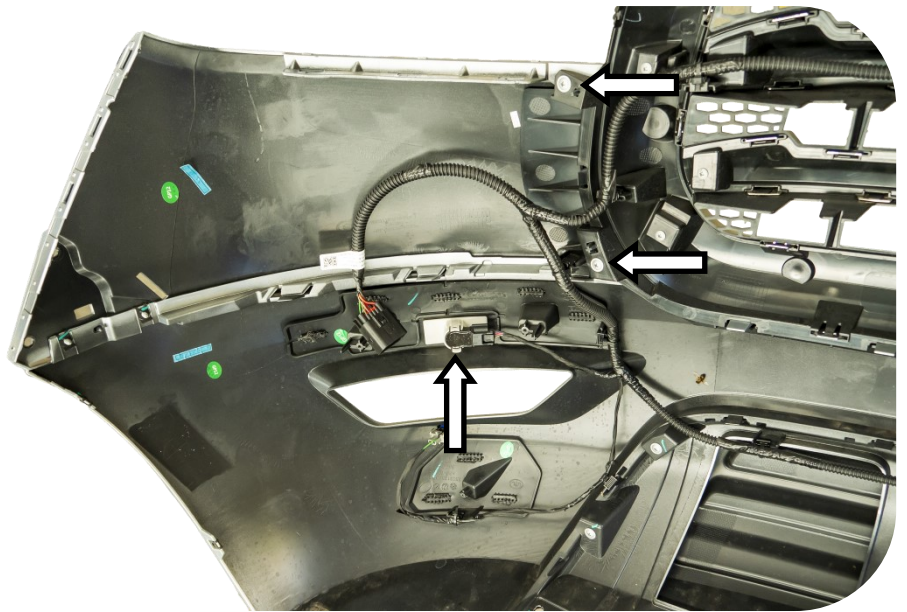


- 43. Disconnect and remove the radar from the grille. Store in a place where the radar will not get damaged. If dropped it will need to be replaced.

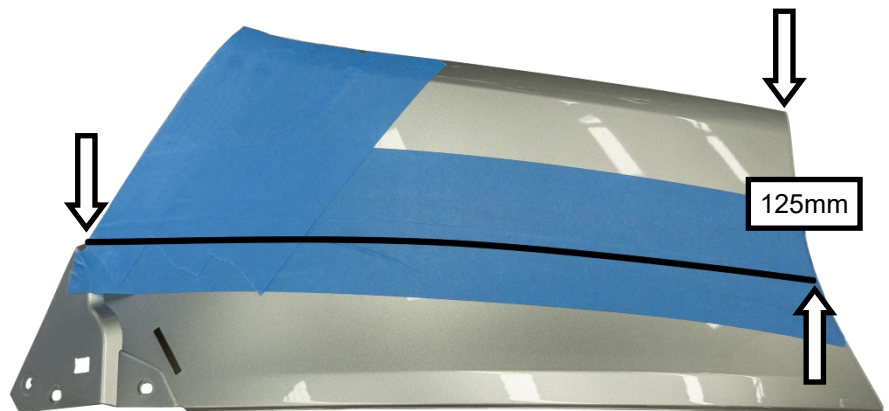


- 44. Unclip the wiring loom from the bumper bar.

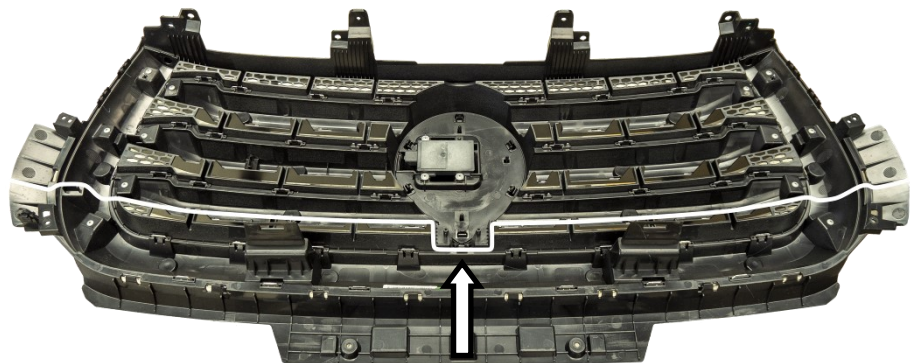
45. Take note of location and orientation of the parking sensors.
46. Remove the parking sensors from the bumper bar.
47. Separate the bumper and grille. Retain the screws securing the bumper sides to the grille.



48. Apply masking tape to the outer bumper sections.
49. Mark a point 125mm down from the inside top of the bumper sections.
50. From this position draw a line across the bumper to the top of the raised section.
51. Trim and discard the lower sections.



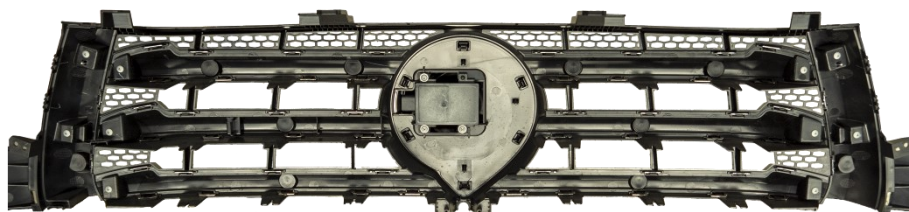
52. The grille needs to be trimmed below the third horizontal spar and around the camera mounting as shown opposite.



53. Ensure the trimming line is below the slot for the bumper clip.

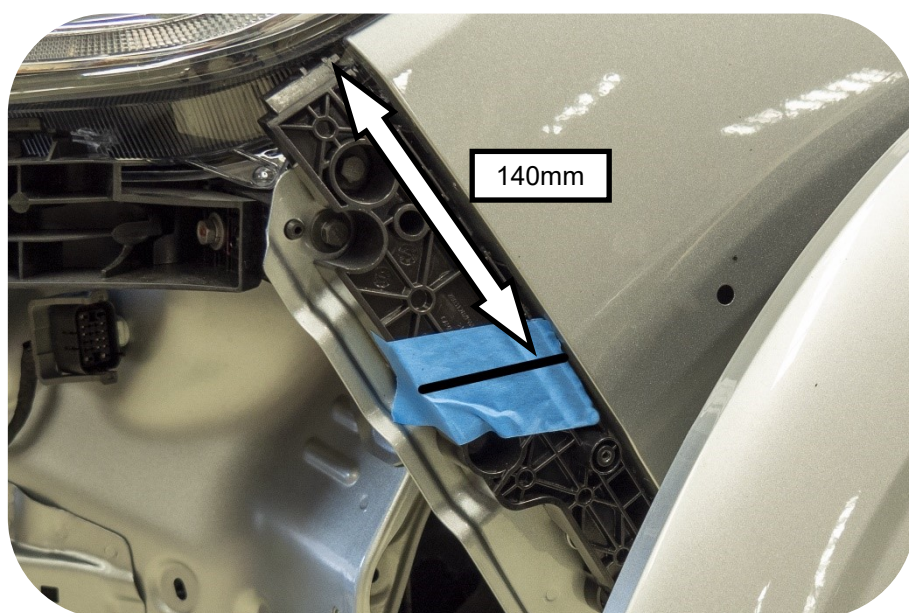


54. Using a multi-tool, carefully trim the grille along the line as described in the above steps.

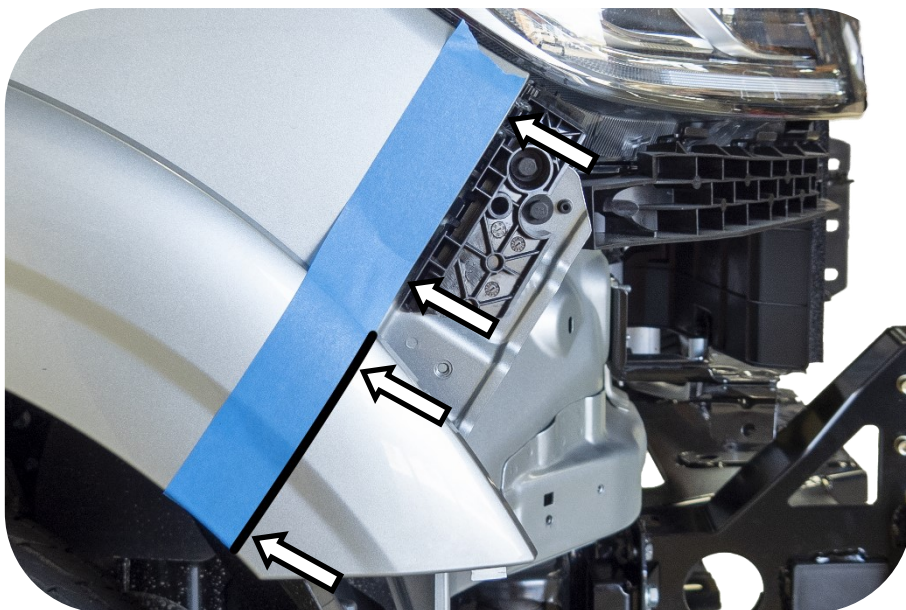


55. Mark a line on the outer bumper retaining clips parallel to the ground and 140mm down from the top of the guard.

56. Remove the clips and trim along the marked line. Discard the lower section.



57. Apply masking tape to the flare and guard. Mark a line along the flare collinear with the edge of the guard.
58. Using a multi-tool, trim the flares.



59. The inner section of the guard can be painted black. This has the effect, especially on lighter coloured vehicles, of hiding the gap between the guard and bull bar.

60. Lightly sand the area, Scotch-Brite pads are ideal. Clean the surface with prep-wash.
61. Mask the surrounding areas.
62. Paint both sides and allow to dry.



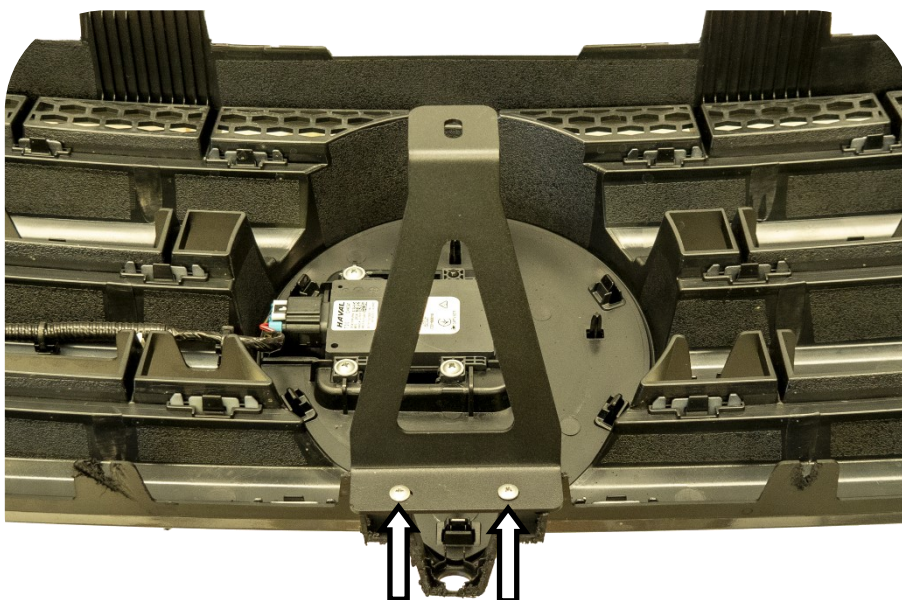
63. Fit the supplied pinch mould to the trimmed flares.



64. Re-attach the bumper sections to the grille.



65. Re-attach the radar unit and wiring to the grille.
66. Fit grille support bracket (item 21) to the grille where the camera was located using the screws removed in step 41.

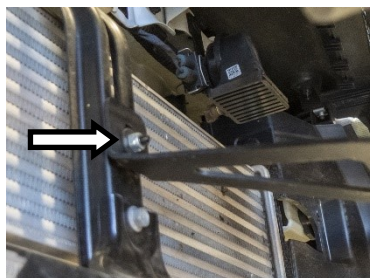


67. Now is a good time to route the wiring for the light bar and scene lights.

NOTE: The scene lights are for off road use only, they are not fog lights. Do not wire them to the fog light loom. The light bar must be connected to the headlight high beam. See wiring diagram at end of instructions.



68. Re-install the grille and bumper section using the original fasteners, re-connect the radar loom.
69. Attach the grille support bracket to the stud on the vertical support using a M6 flange nut.



70. Fit the light bar to the centre section of the bar using the fasteners supplied with the light.

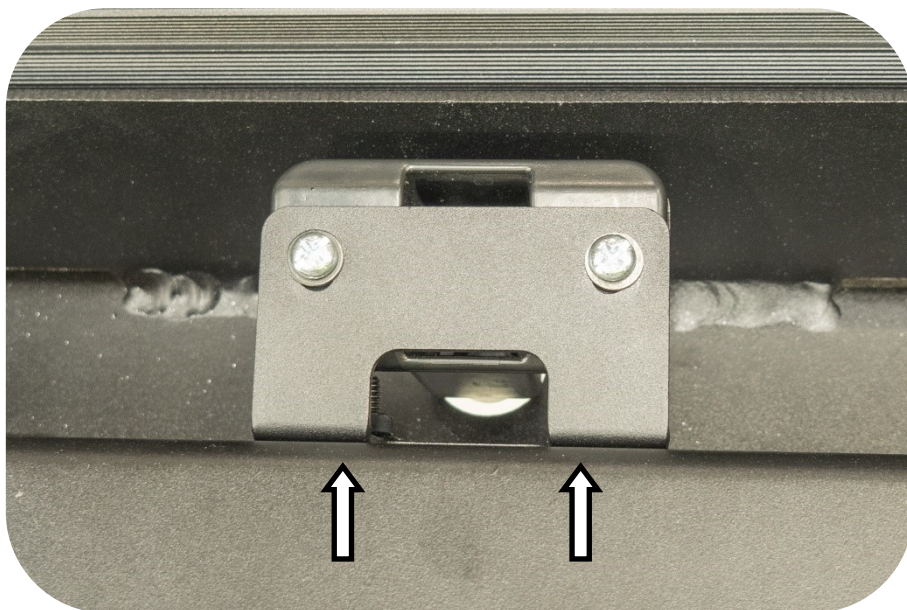


71. Fit the camera, or camera blank (removed earlier), to the camera relocation bracket (item 18) using two M5 pan head screws, four M5 flat washers and M5 nyloc nuts.



72. Fit the camera bracket to the bar using two M6 x 20mm hex bolts, M6 panel washers and M6 flange nuts.

73. Align the camera or camera blank so that it is centred in hole in the bar. Tighten bolts to correct torque.

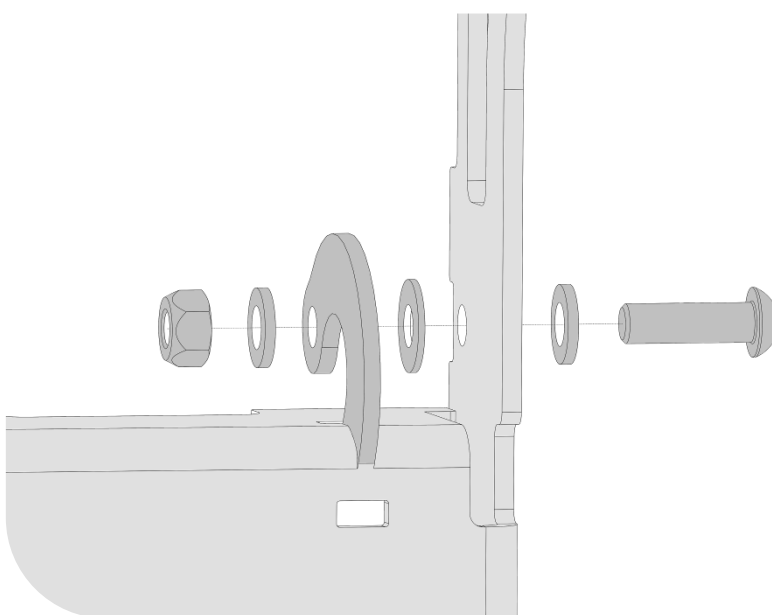


74. Fit two M6 cage nuts to the outer sides of the bar centre.

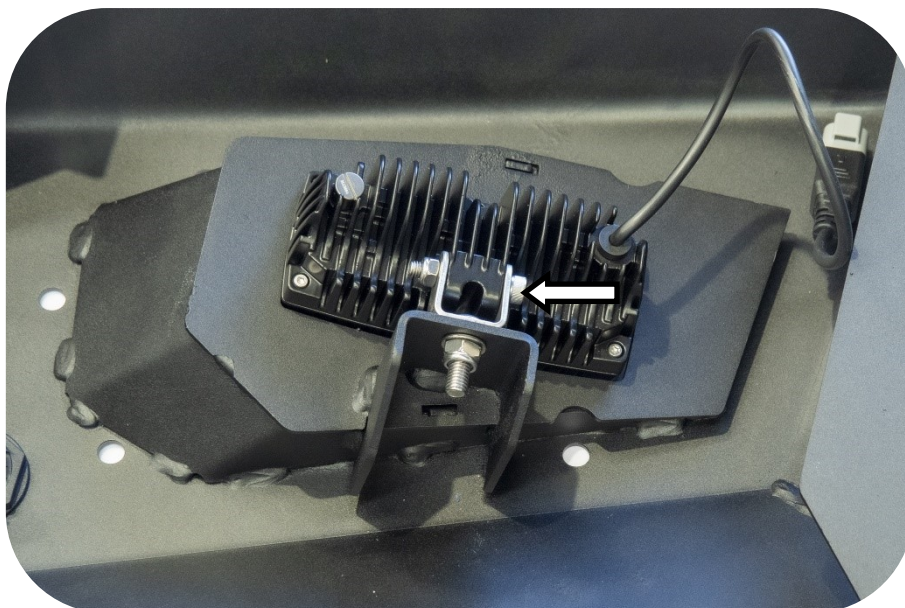
75. Insert the number plate bracket (item 17) to the middle section of the bar.



76. Place the nylon washer between the number plate bracket and the hawse mount. Tighten the nyloc nuts so that the number plate bracket can be moved using moderate force. **DO NOT OVER TIGHTEN.**



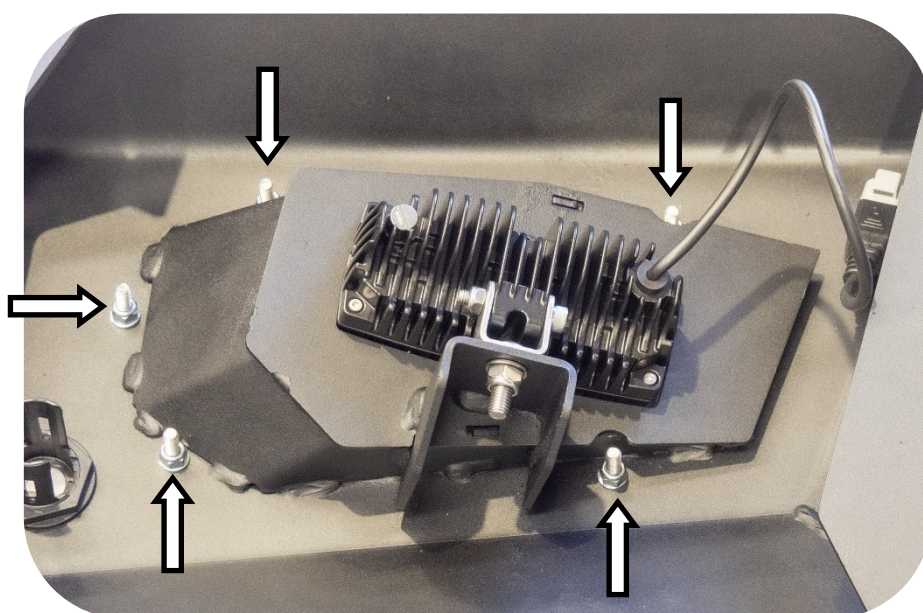
77. Fit the scene lights (item 28) into the wing sections of the bar using the fasteners supplied with the lights.
78. The stainless steel U-bracket needs to be installed before the light. Once installed, fit the scene light to the bracket through the front.



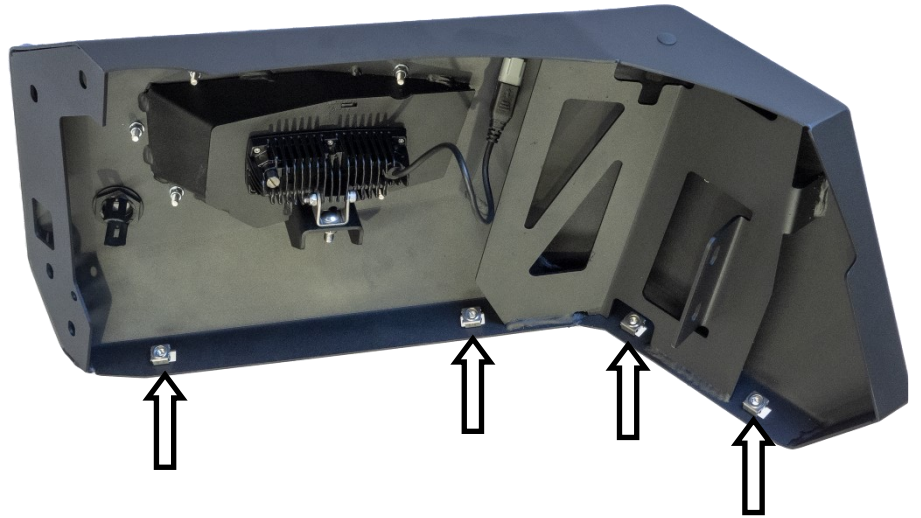
79. Fit the stainless surrounds (items 15 & 16) to the outer sections.



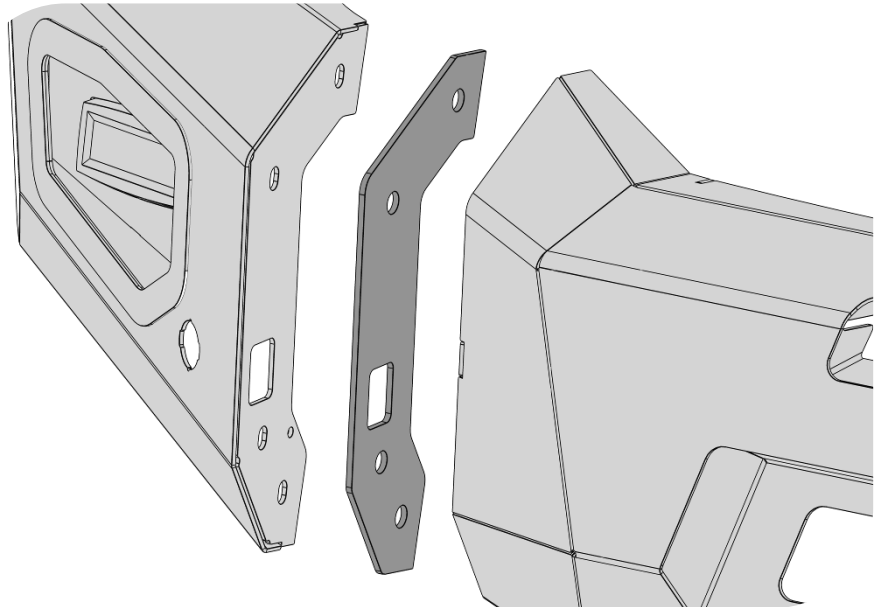
80. Secure the light trims to the outer sections with M6 flat washers and M6 nyloc nuts.



81. Fit eight cage nuts to the wing sections.



82. There are two 4mm foam gaskets (item 19) that are positioned between the middle and outer sections of the bar. One side of these gaskets has adhesive, stick the gasket to either the outer or inner section.

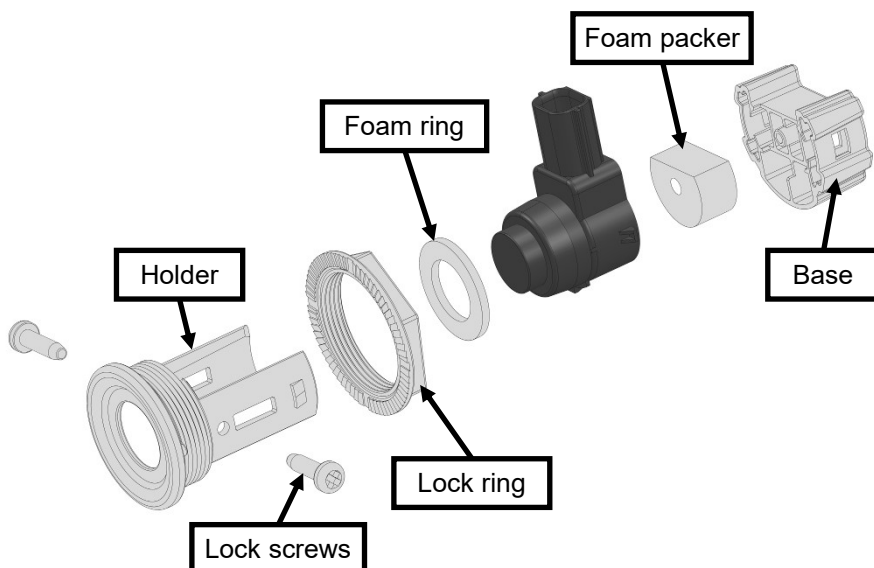


83. Secure the outer sections to the middle section using eight M10 x 1.25 x 30mm hex bolts, M10 flat washers and M10 flange nuts.

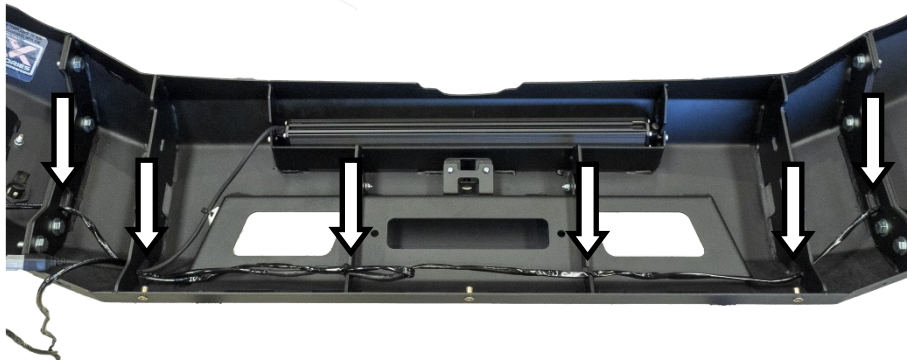
84. Align the outer sections to the middle section and tighten the fasteners to the correct torque.



85. Install the parking sensors in the following order.
- Remove the backing from the foam ring and place into the holder.
 - Fit the holder into the bar and tighten.
 - Insert the parking sensor.
 - Remove the backing and place the foam packer on the base.
 - Snap the base onto the holder.



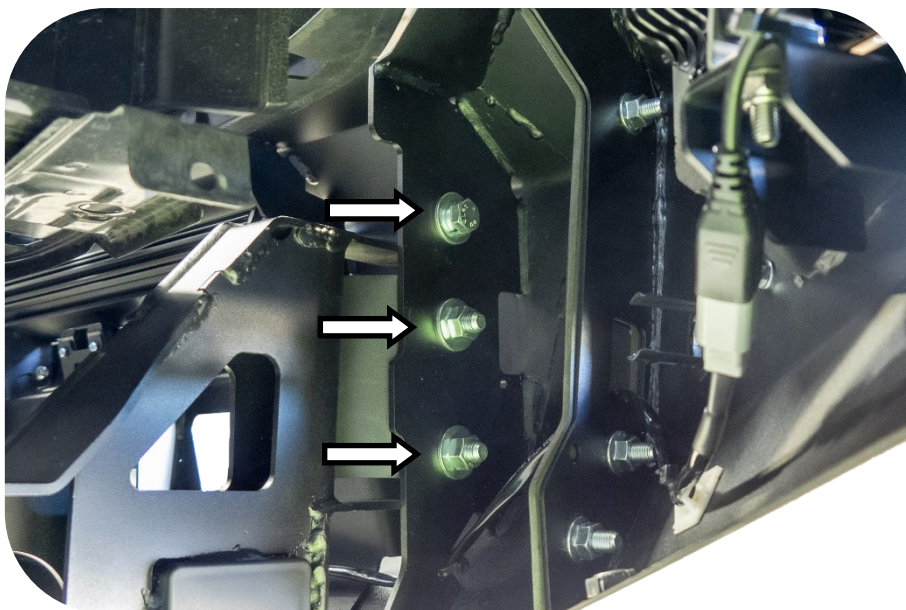
86. Run the wiring from the lights, and where fitted, parking sensors, through the holes located in the uprights of the bar.
87. Secure with cable ties.



88. Lift the bull bar onto the chassis mount.

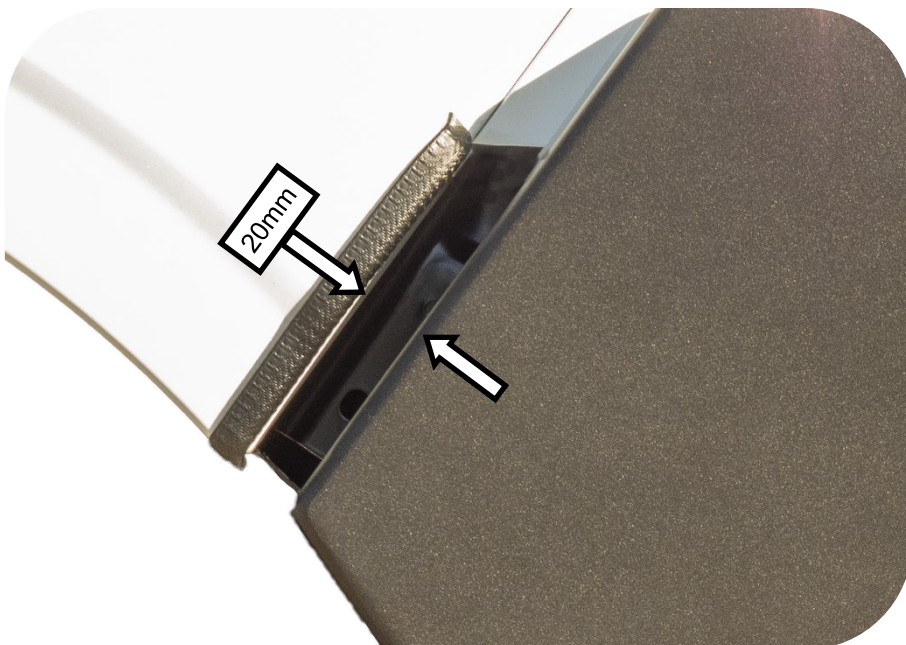


89. Secure the bar to the chassis mounts using six M12 x 35mm hex bolts, six M12 spring washers, twelve M12 flat washers, and six M12 hex nuts. Tighten enough so that the bar is secure but still able to be adjusted.

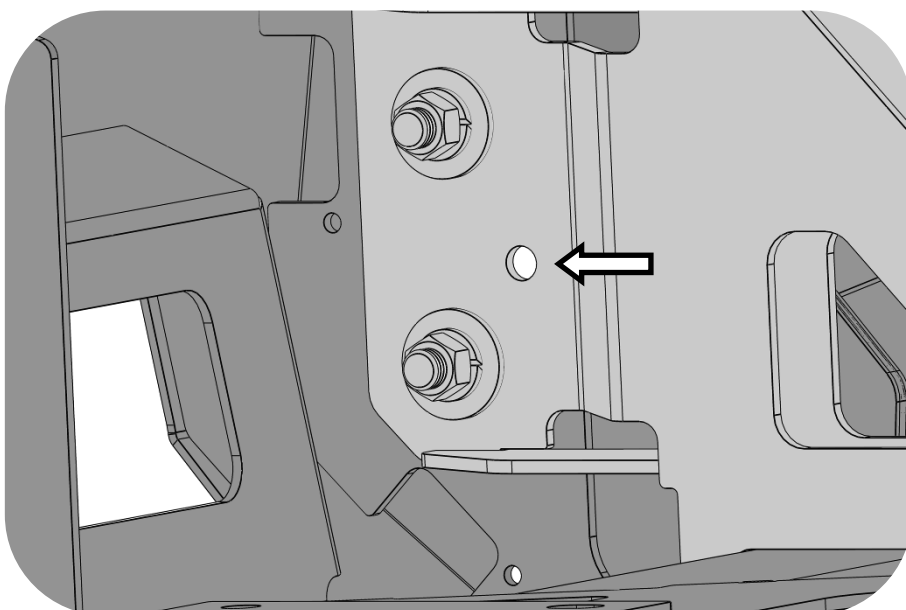


90. Adjust the bar so that the end of the wings are parallel to the guard with a 20mm gap to the flare and in line the wheel arch. Once happy with the fit of the bull bar, tighten the six bolts to the correct torque.

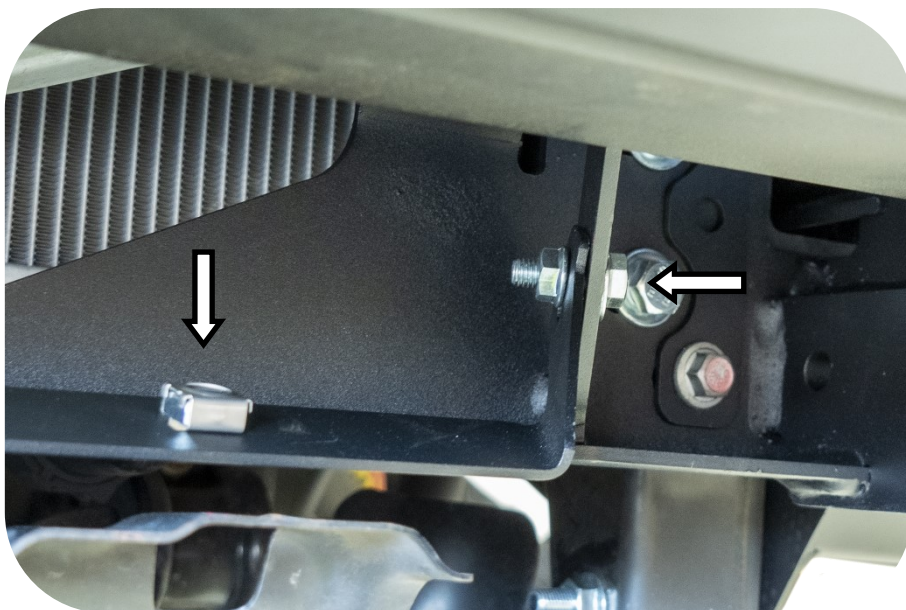
NOTE: If the bar is not even side to side, loosen the chassis mounting bolts to enable adjustment. Once centred, tighten all the mounting bolts to the correct torque.



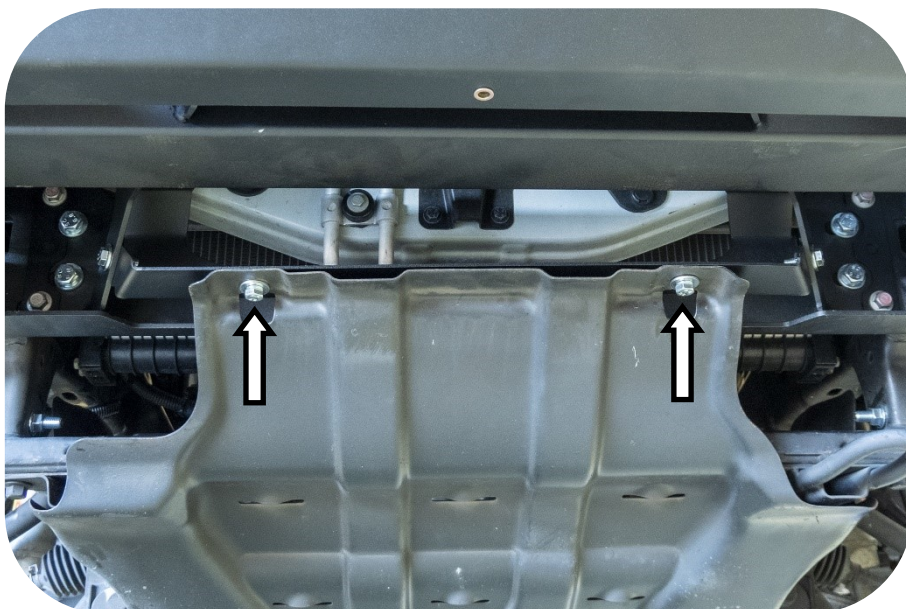
91. Drill a pinning hole with a 10mm drill bit using the hole in the upright as a guide.
92. Deburr and treat with rust preventative.
93. Secure using a M10 x 30mm hex bolt, M10 flat washer and M10 flange nut.
94. Repeat for the other side



95. Fit the OE stone tray bracket (item 22) with two M8 cage nuts.
96. Fit the bracket to the chassis mount using two M8 x 20mm hex bolts, M8 flat washers and M8 flange nuts.



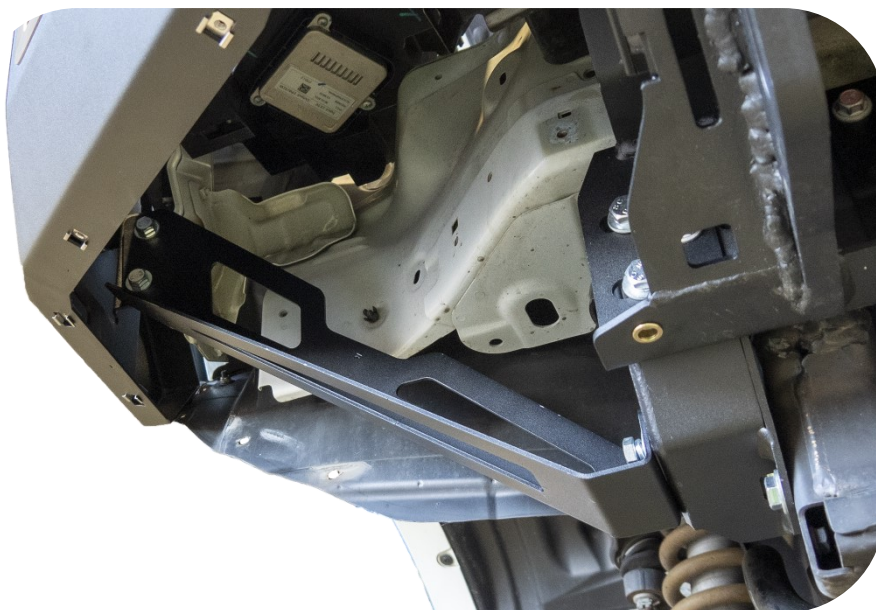
97. Secure the OE stone tray to the bracket with the original fasteners.
98. Tighten all fasteners to the correct torque.



99. Re-connect the wiring loom to the vehicle.
100. Connect the light bar and scene lights to the previously installed loom.
101. Re-fit the radiator top cover using the clips removed earlier.
102. Ensure all wiring is secured away from hot, sharp or moving objects.

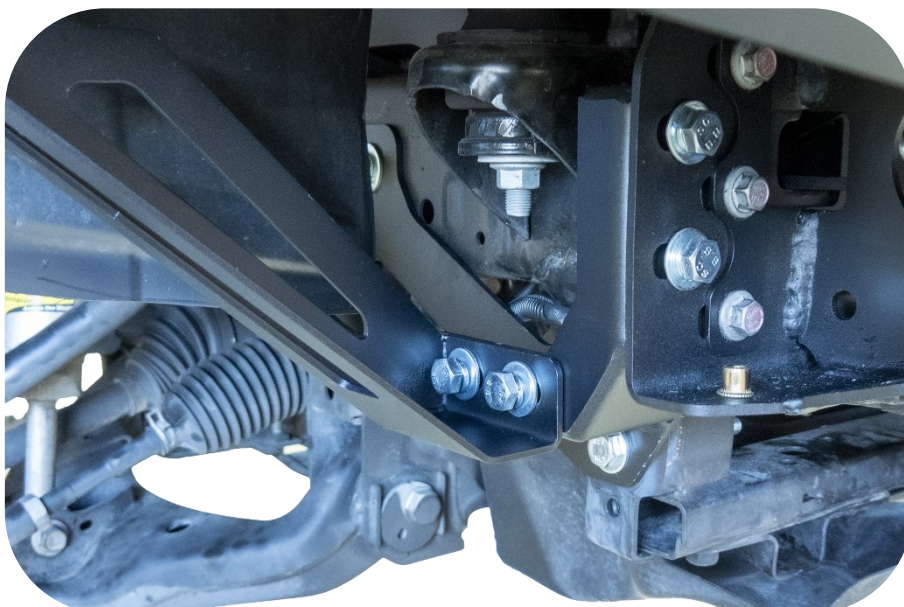


103. Fit the wing braces (items 8 & 9) to the bar.



104. Secure the brace to the chassis support bracket using four M10 x 1.5 x 30mm hex bolts, M10 spring and flat washers.

Do not tighten.



105. Secure the brace to the wing with four M10 x 1.25 x 30mm hex bolts, M10 flat washers and M10 flange nuts.

106. Align and tighten all fasteners to the correct torque.



107. Fit four M6 cage nuts to the stone tray mount brackets (items 13 & 14).
108. Using two M8 x 25mm hex bolts, M8 spring and flat washers, secure the stone tray mount brackets (top fold to the inside) to the bottom of the chassis mount as shown.

Do not tighten.

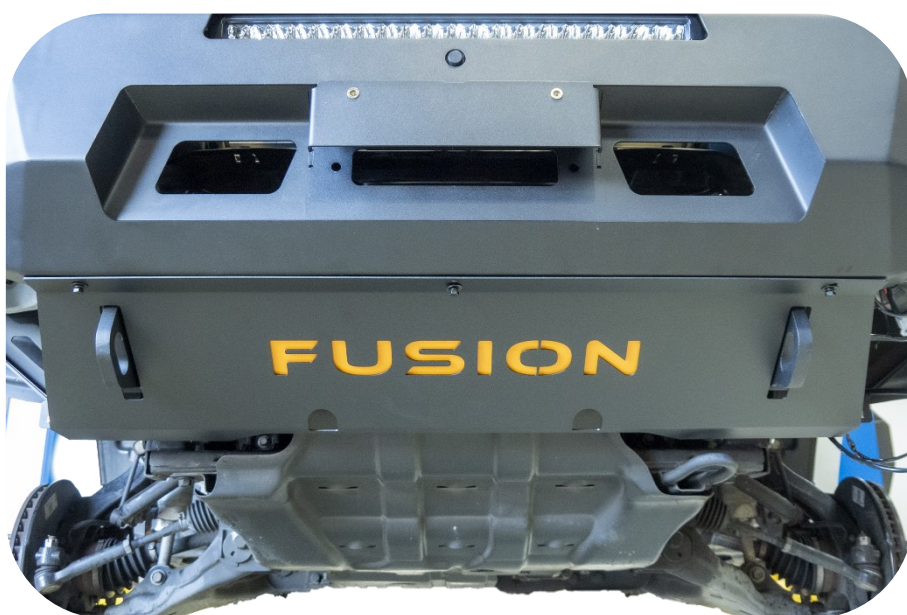


109. Remove the protective coating from the orange sheet (item 20).
110. Clean the rear of the centre stone tray (item 10) and front of the Perspex sheet with prep wash.
111. Apply the supplied VHB tape to the front outer of the Perspex sheet.
112. Attach the Perspex sheet to the back side of the centre stone tray.

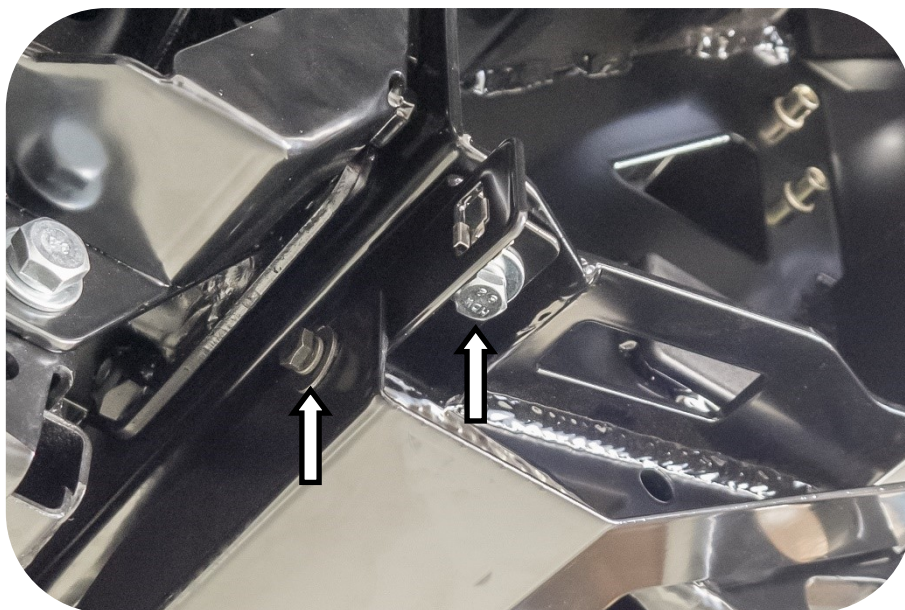


113. Fit the centre stone tray (item 10) to the bar using three M6 x 20mm hex bolts, M6 spring washers and M6 panel washers.

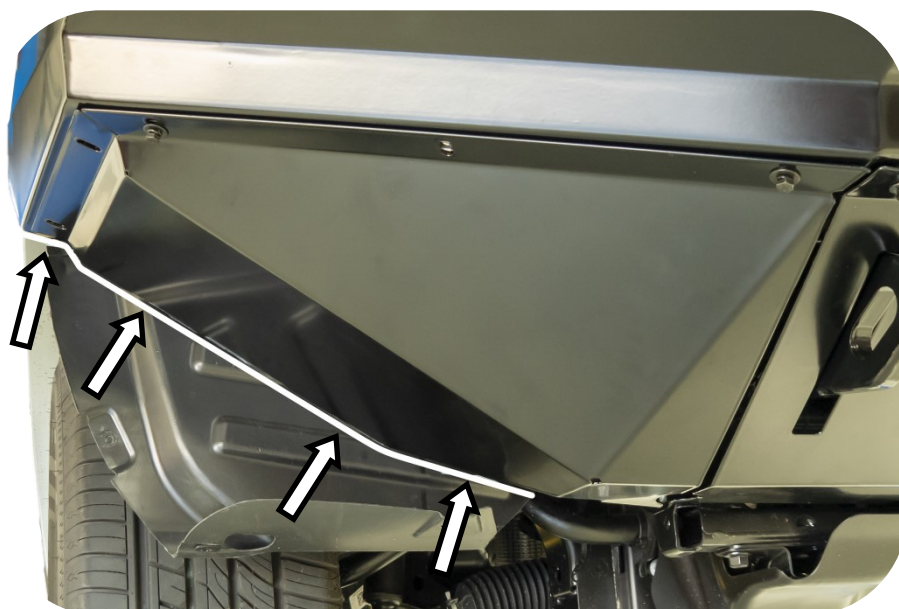
Do not tighten.



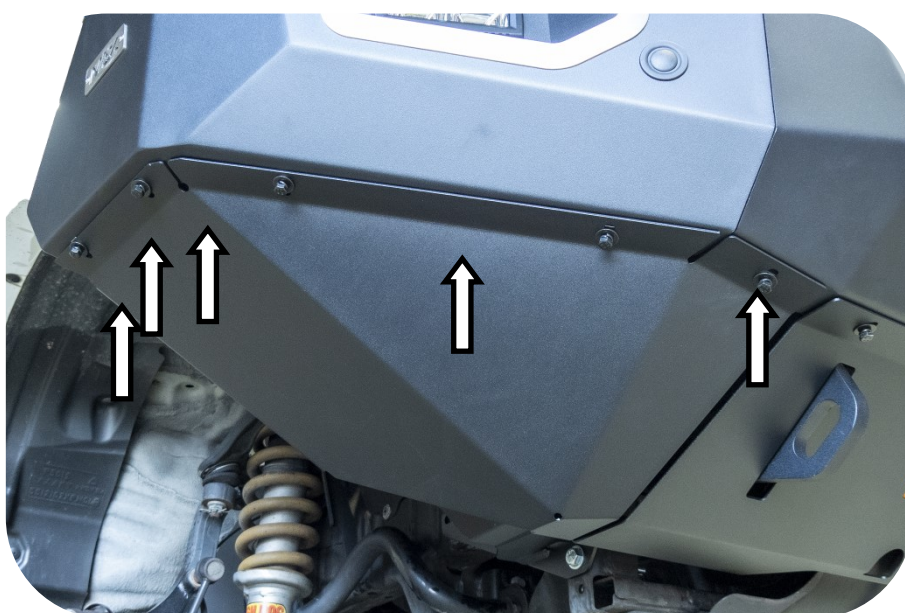
114. Secure the rear of the stone tray to the stone tray mount brackets with two M6 x 20mm hex bolts, M6 spring and panel washers.
115. Position the centre stone tray and tighten the M8 bolt of the stone tray bracket.
116. Tighten the centre stone tray fasteners to the correct torque.



117. Fit or hold the outer stone trays (items 11 & 12) in place so that a line can be marked on the inner guard where it meets the bottom of the stone tray.
118. Trim the inner guard approximately 5mm above the marked line.



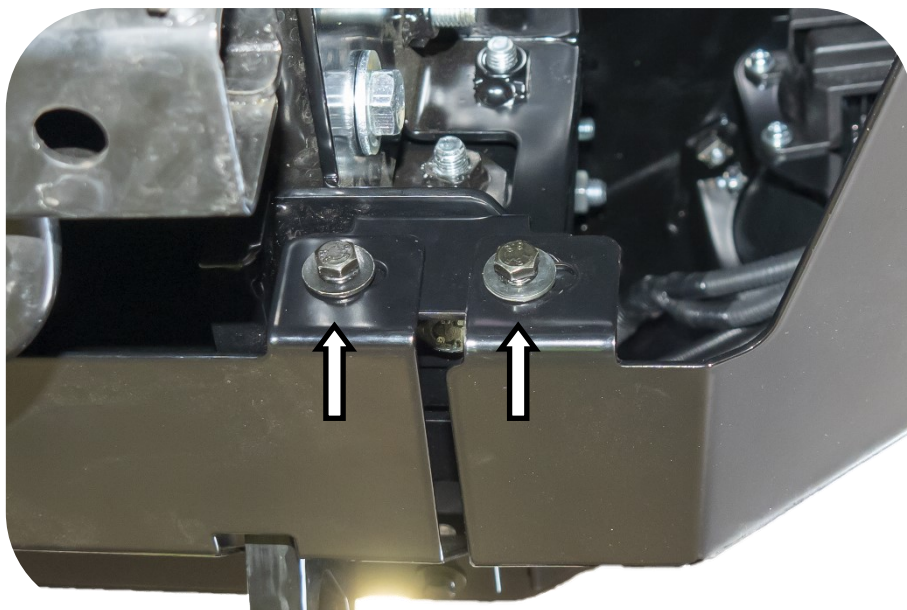
119. Ensure the inner guard is tucked in behind the rear flange of the stone tray.
120. Secure the stone tray to the bar with five M6 x 20mm hex bolts, M6 spring and panel washers.
- Do not tighten.**



121. Secure the stone tray to the stone tray mount bracket using a M6 x 20mm hex bolt, M6 spring and panel washer.

Do not tighten.

118. Repeat for the opposite side.

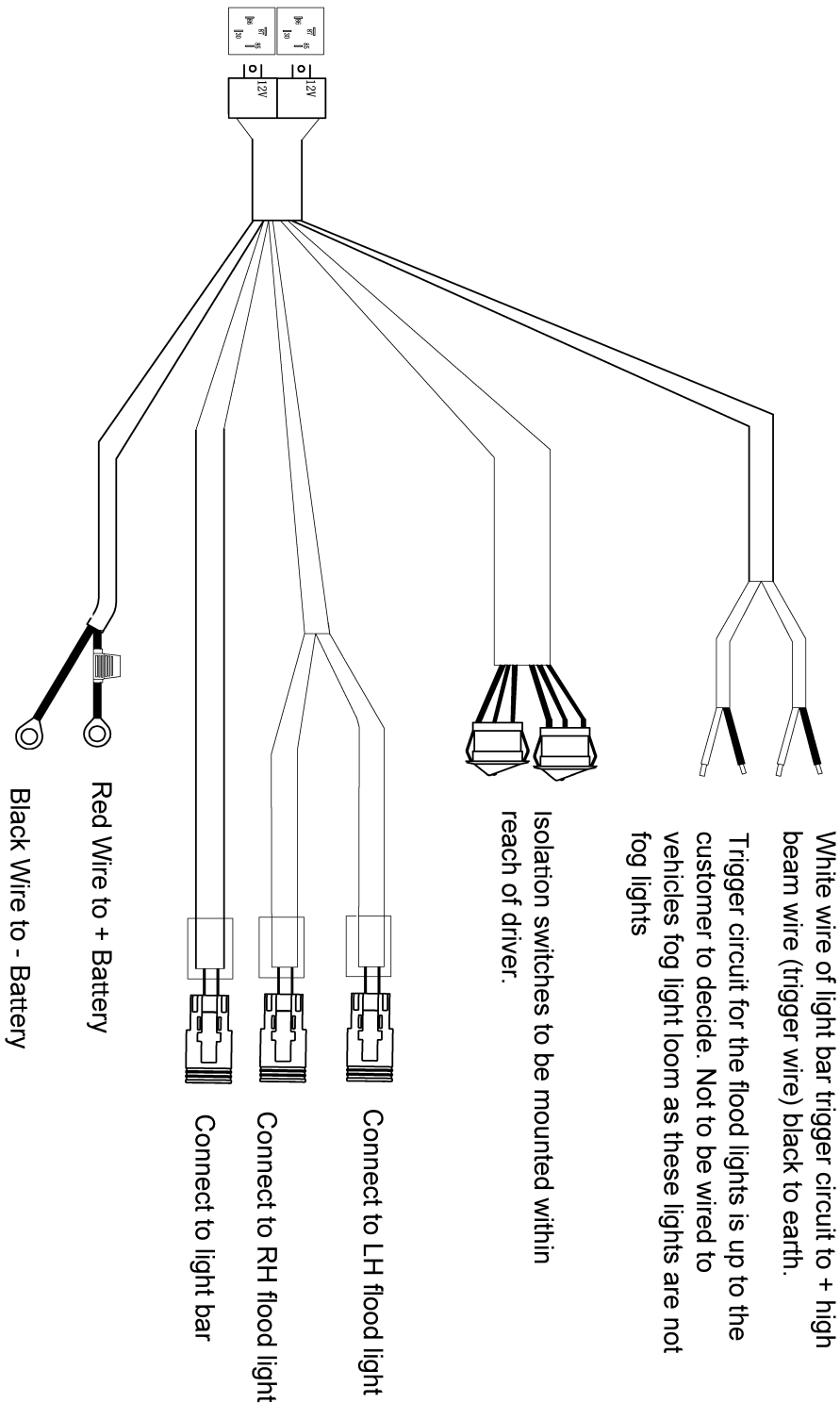


123. Align the stone trays and tighten the stone tray bolts to the correct torque.



124. Fit the number plate number plate bracket using two M6 pan head screws.





It is recommended that wiring is installed by qualified auto electrician.



CONTACT US

16 COMBARTON STREET

BRENDALE QLD 4500

PH. 07 3204 0311

E. INFO@MAX4X4.COM.AU

WWW.MAX4X4.COM.AU