



FITTING INSTRUCTIONS FOR

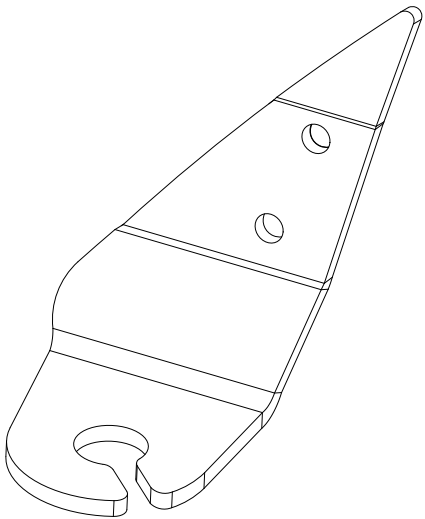
Side Mirror Aerial Mount (LHS)

PART NUMBER

KS0291

COMPATIBILITY

Toyota LandCruiser LC200



Included contents

QTY	COMPONENT	QTY	COMPONENT
1	Aerial Mount Bracket	1	M6 Nutsert
2	4mm Kidney Shaped Spacers	1	M6 Socket Head Cap Screw
2	M6x25 Button Head Bolts	1	M8 Serrated Flanged Nut



Time

30 minutes / Half a beer

Scan the **QR code** to watch the video installation guide,
or for further information contact KAON on **07 3180 1470** or **info@kaon.com.au**



Bolt Torque					
DIAMETER (mm)	5mm	6mm	8mm	10mm	12mm
NEWTON-METRES (Nm)	5 Nm	9 Nm	22 Nm	44 Nm	77 Nm

Let's get to work.

Preparation

- 1. We want to make sure you don't damage anything in the quest to mount your aerial, so make sure to apply masking tape around the panel in front of the mirror to prevent damage to paint.
- 2. Carefully pry off the plastic panel, working along the bottom edge.
- 3. Remove the M6 bolt attaching the front quarter panel with 10mm spanner or socket.



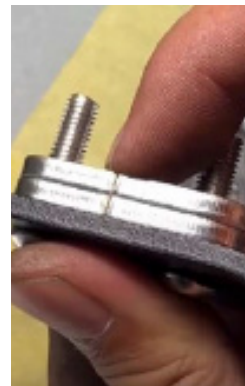
Nutsert Installation

- 1. Carefully drill and enlarge the upper hole to 9.5mm.
- 2. Apply rust preventative paint to the drilled hole.



Bracket Installation

1. Place the MB serrated nut over the M6 socket head cap screw. Wind the M6 nutsert onto the cap screw so the flange of the nutsert is up against the serrations of the MB nut.
2. Carefully pre-set the nutsert by holding the MS nut with a spanner and tightening the cap screw with an allen wrench. The nutsert should not turn. Stop tightening when you notice a very slight bulge under the flange.
3. Place the assembly into the hole and tighten the M6 cap screw while holding the MB nut in place. You will feel the nutsert pulling up. Continue until you feel the bolt straightening and the nutsert has pulled up tight. Remove the bolt and nut.
4. Place the two spacers behind the aerial bracket so the curves clear the panel ridges.



Bracket Installation cont.

5. Position and attach the bracket using two M6x25 button head screws.
6. Sit back and enjoy your hard work. Don't relax too much though, looks like now you have an aerial to install.



Local Knowledge & Assistance

We know half the fun of building your dream 4x4 is getting your hands dirty. But we also know that sometimes, things don't go to plan. If in the pursuit to build the ultimate setup you find yourself off-track, we're here to help you get unstuck.

For further information call 07 3180 1470 or email info@kaon.com.au

Disclaimer: The products sold by KAON should not be modified, and are for use only on the vehicles specifically stated. KAON will not be liable for any damages arising out of the use or misuse of it's products. It is the customers responsibility to ensure the products are safely and properly used and installed. KAON consistently seeks to improve it's products and reserves the right to make changes to any product.