

MAX

FITTING INSTRUCTIONS



PART NUMBER
MAX-DMAX21
MAXPR-DMAX21

APPLICATION
DMAX MY21 ON

FITTING TIME
240 MIN

REV 02





- Do not attach VFPS to the vehicle using anchorages not intended for this purpose (e.g. engine mounting bolts).
- Do not use this product for any vehicle make or model, other than those specified by the VFPS manufacturer.
- Do not remove the plaque or label from the VFPS.
- Do not modify the structure of the VFPS in any way.

Read instructions thoroughly before commencing any work. Check that all parts listed in this manual are included and that there is no damage to any parts.

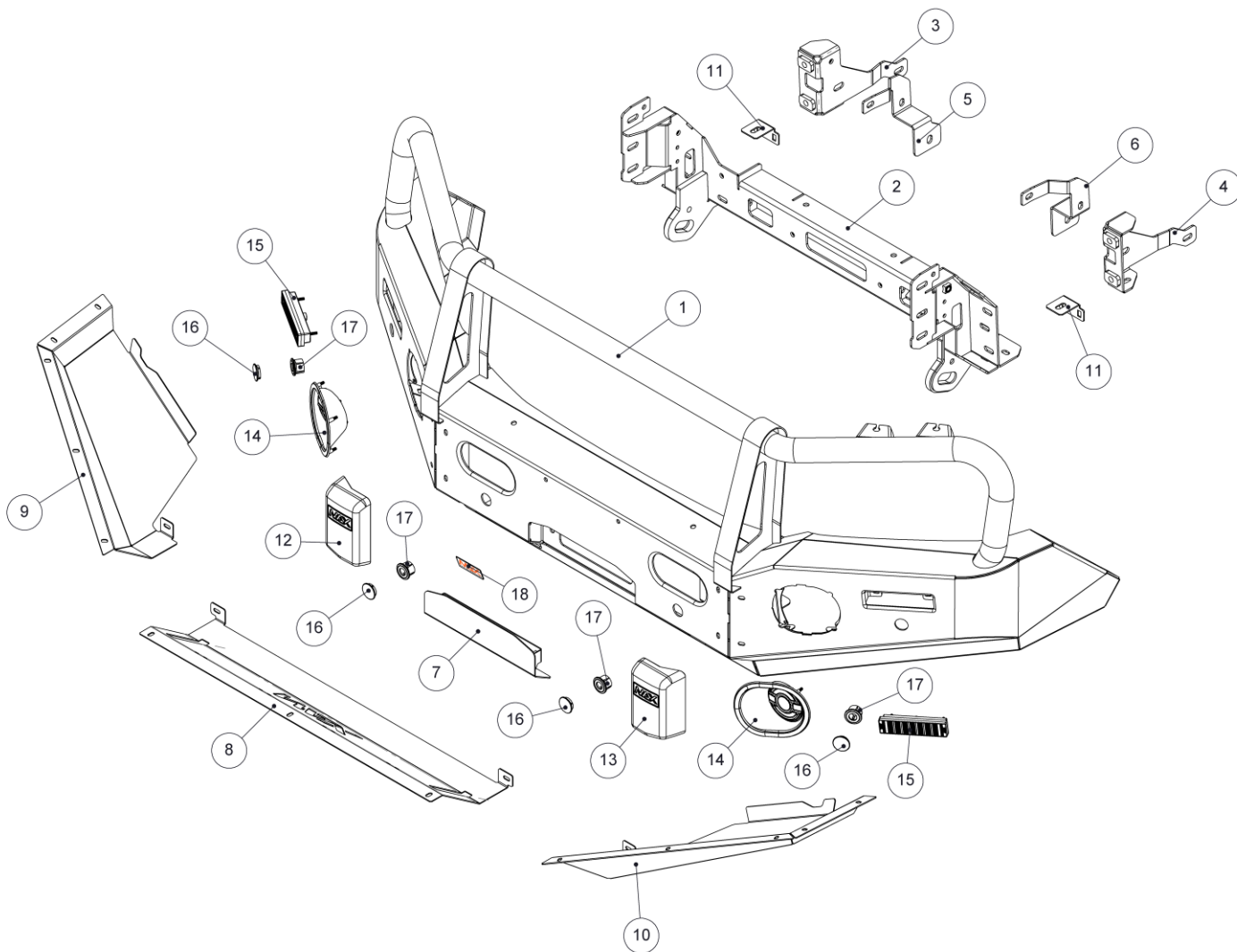
Always wear safety glasses and hearing protection. Make sure work area is kept clean at all times.

During the installation of this product it may have been necessary to move driver aids. Some of these may need to be re-calibrated after fitment by the dealer. All care is taken to test that these aids will work as the manufacturer intended but not all circumstances can be tested. The driver remains responsible for the vehicle at all times.

Wash and dry the vehicle regularly using car wash to maintain the appearance of this product.

These instructions are to be given to the customer on completion of the job.

BOLT SIZE	TORQUE Nm	TORQUE ft.lb
M5	5	4
M6	9	7
M8	22	16
M10	44	32
M12	77	57



ITEM	DESCRIPTION	QTY
1	Welded assembly	1
2	Chassis mount bracket	1
3	Chassis support assembly RH	1
4	Chassis support assembly LH	1
5	Chassis support inner RH	1
6	Chassis support inner LH	1
7	Winch cover plate assembly	1
8	Stone tray centre	1
9	Stone tray outer RH	1
10	Stone tray outer LH	1
11	Stone tray mount bracket	2
12	Override RH	1
13	Override LH	1
14	Fog light housing	2
15	Combination + DRL lamp	2
16	Parking sensor plug	4
17	Parking sensor grommet	4
18	Gel sticker small	1
FASTENERS		
1	M12 x 1.75 x 90mm Hex bolt	2
2	M12 x 1.75 x 35mm Hex bolt	6
3	M12 Spring washer	8
4	M12 Flat washer	16
5	M12 x 1.75 Hex nut	8
6	M10 x 1.25 x 30mm Hex bolt	10
7	M10 x 1.5 x 35mm Hex bolt	8
8	M10 Spring washer	12
9	M10 Flat washer	18
10	M10 Flange nut	6
11	M6 x 20mm Hex bolt black	19
12	M6 x 16mm Pan head screw	2
13	M6 Spring washer black	19
14	M6 Panel washer black	19
15	M6 Cage nut suit 4mm	10
16	M6 Cage nut 2.5mm	4

ITEM	DESCRIPTION	QTY
17	M6 Riv nut	5
18	M6 Flange nut	8
19	M5 Nyloc nut	8
20	Pinch mould @600mm	2



- BASIC TOOL KIT
- TORQUE WRENCH
- 10mm DRILL BIT
- AIR HACKSAW / MULTI-TOOL
- FILE OR SANDPAPER
- MASKING TAPE (50mm)
- FELT TIPPED MARKER
- LED TEST LIGHT / MULTIMETER
- SOLDERING IRON
- RUST PREVENTATIVE
- ELECTRICAL TAPE
- CABLE TIES



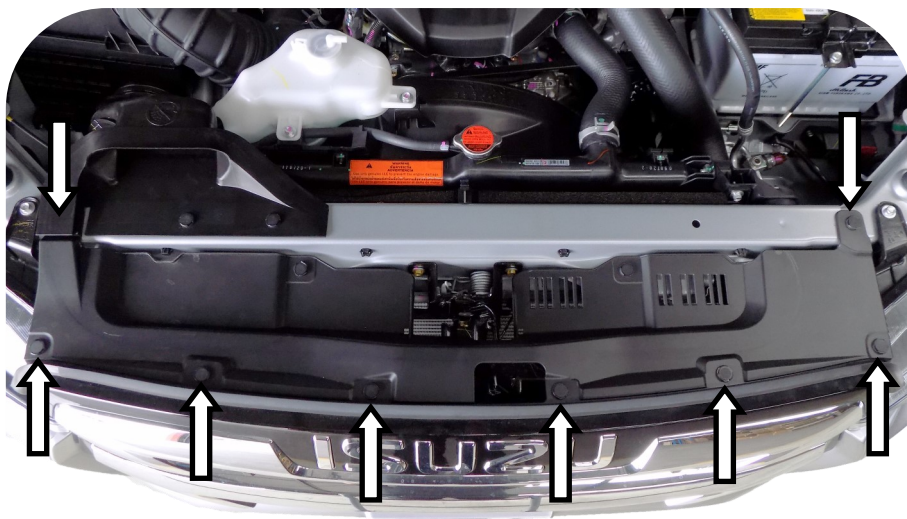
1. Locate vehicle in a suitable area.



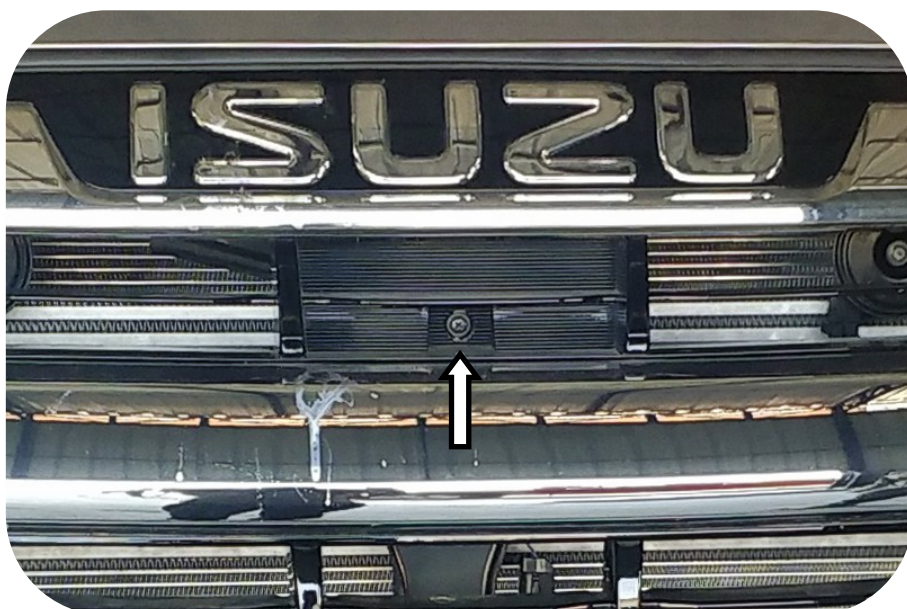
2. Where fitted, remove the number plate.



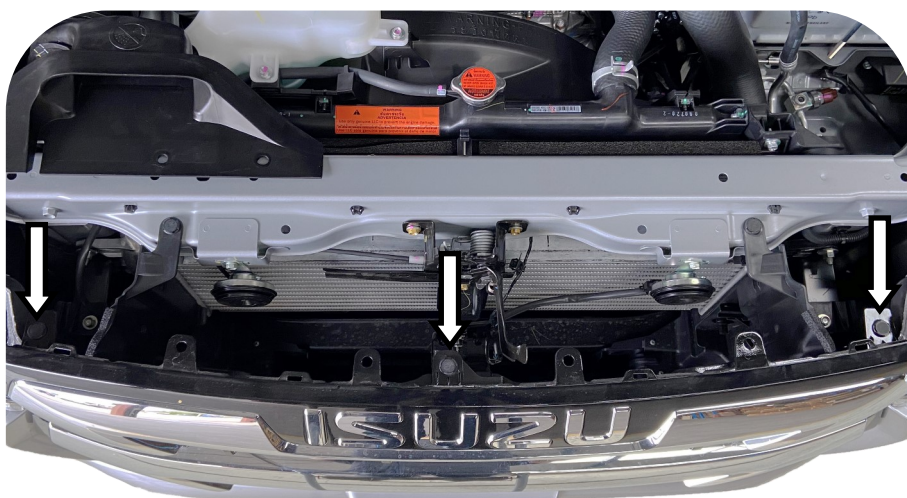
3. Remove and retain the fasteners from the top cover.



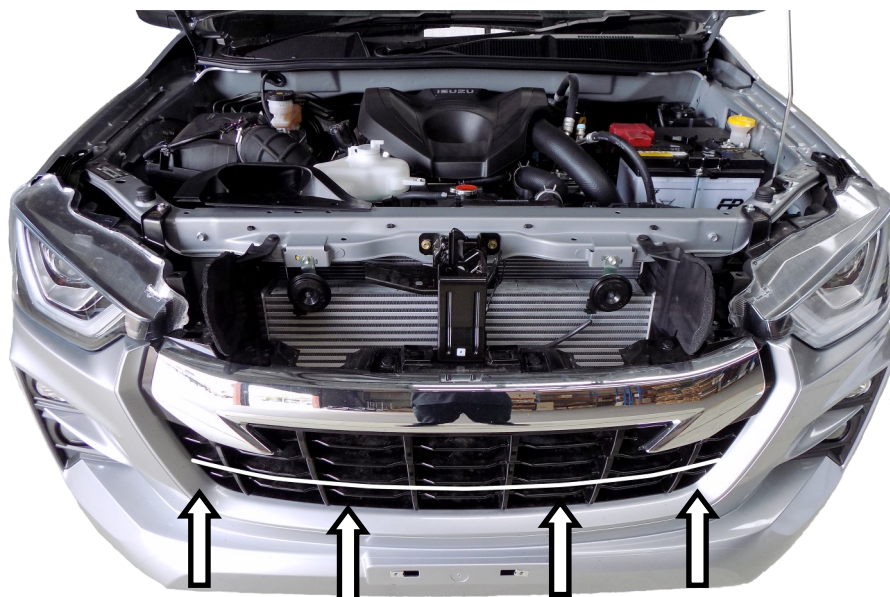
4. Remove and retain the screw from the centre of the upper grille.



5. Remove and retain the three fasteners retaining the lower grille.
6. Remove the upper grille by carefully pulling forward.



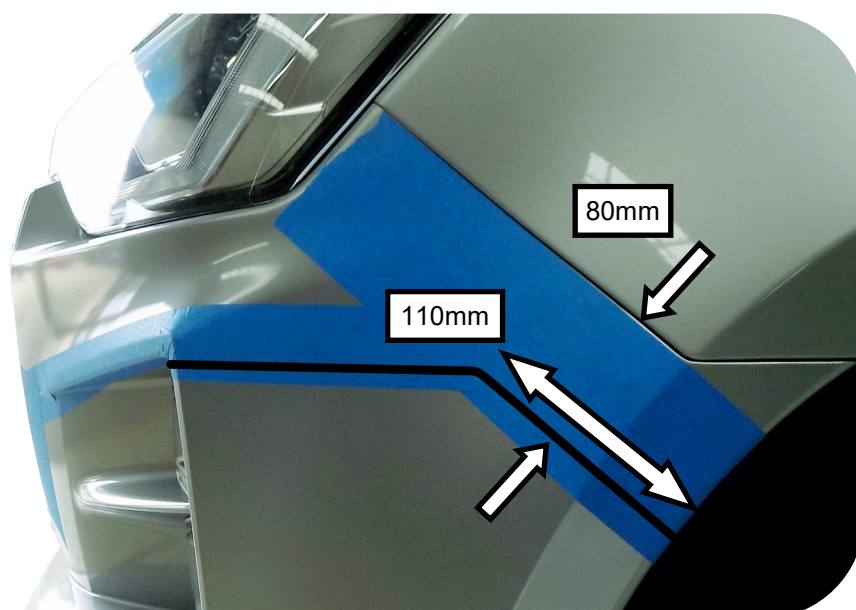
7. The lower grille will be cut below the second from the bottom horizontal spa.



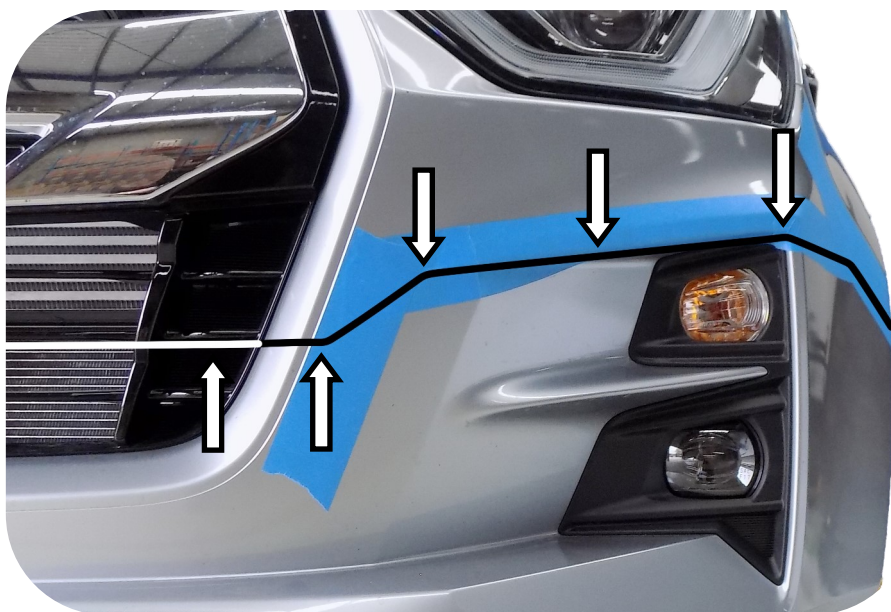
8. Apply masking tape to both sides of the bumper as shown.



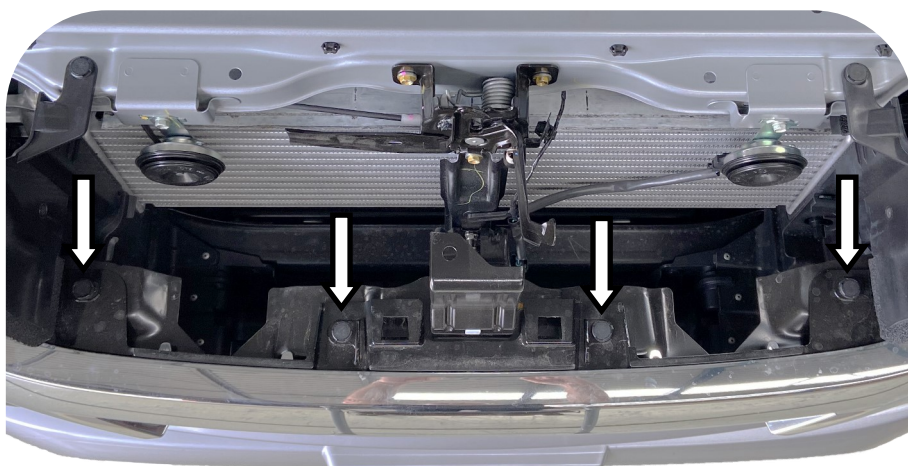
9. Mark a line parallel with the guard edge 80mm down and 110mm long.
10. From the end of the marked line, extend this line to the corner of the light housing.



11. Mark a line following the contour line above the light housing.
12. From the end of the contour, continue the line diagonally to where the second bottom horizontal spa is as shown.
13. Repeat for the opposite side.



14. Remove and retain the four fasteners securing the remaining grille section.



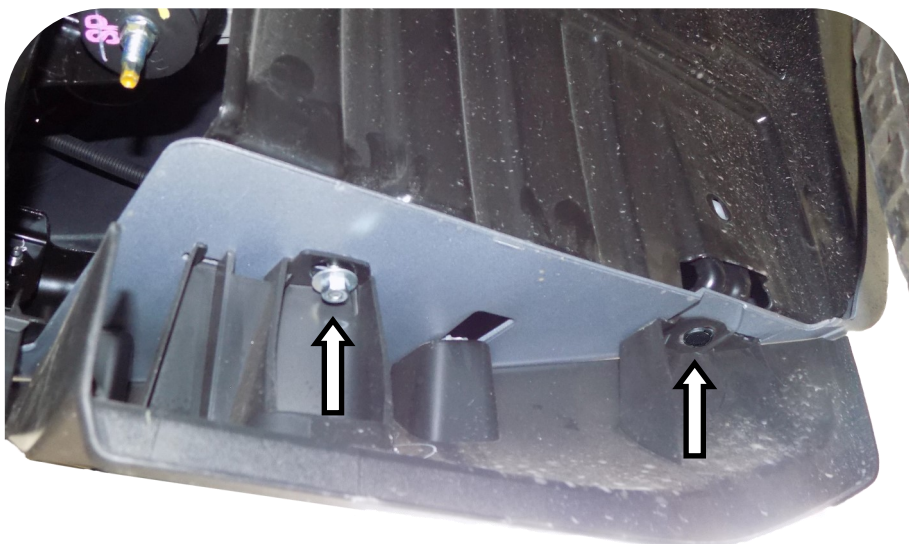
15. Remove and retain the fasteners securing the bumper to the guard on both sides.



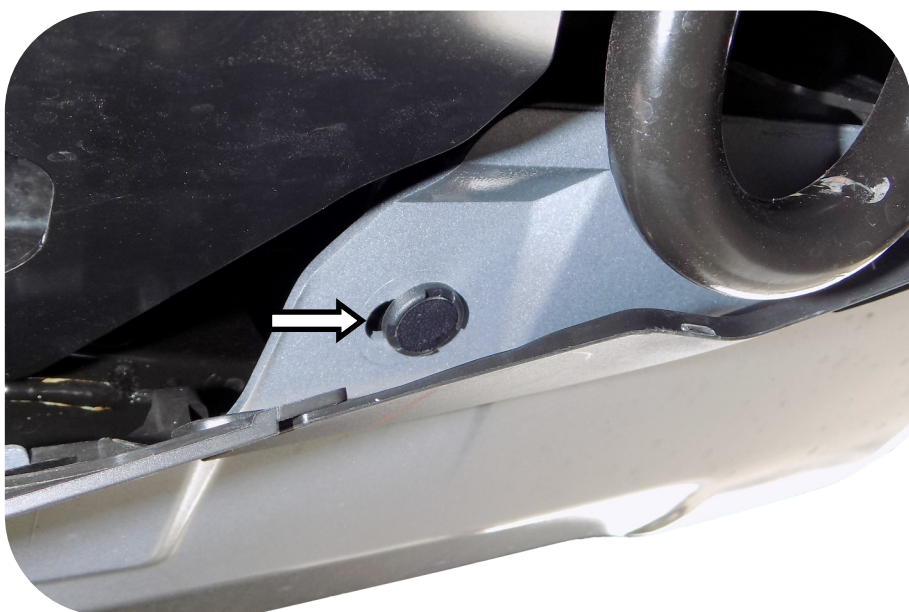
16. Remove and discard the fastener securing the inner guard.



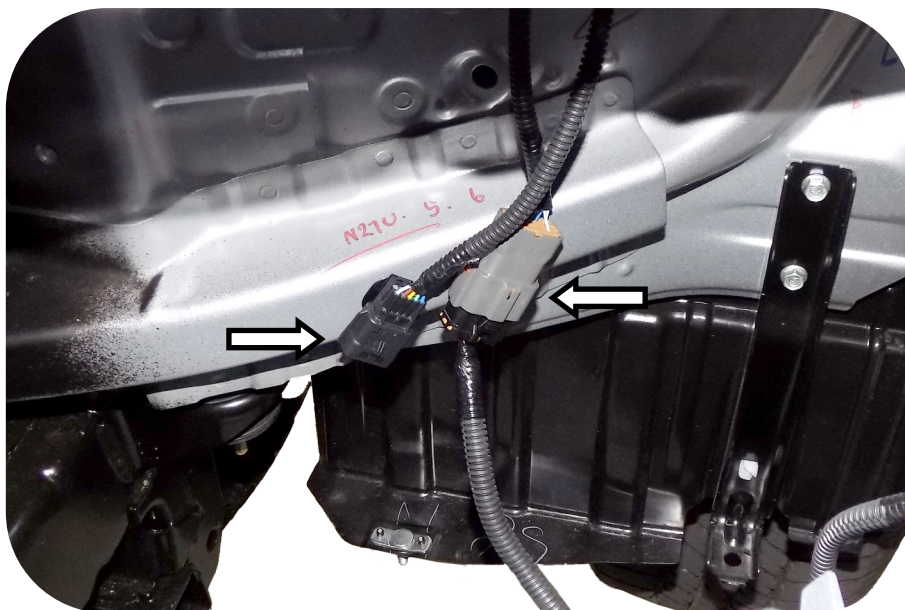
17. Remove and discard the four (two either side) fasteners at the bottom of the bumper.



18. Remove and discard the two fasteners, one either side, located under the lower edge of the bumper.



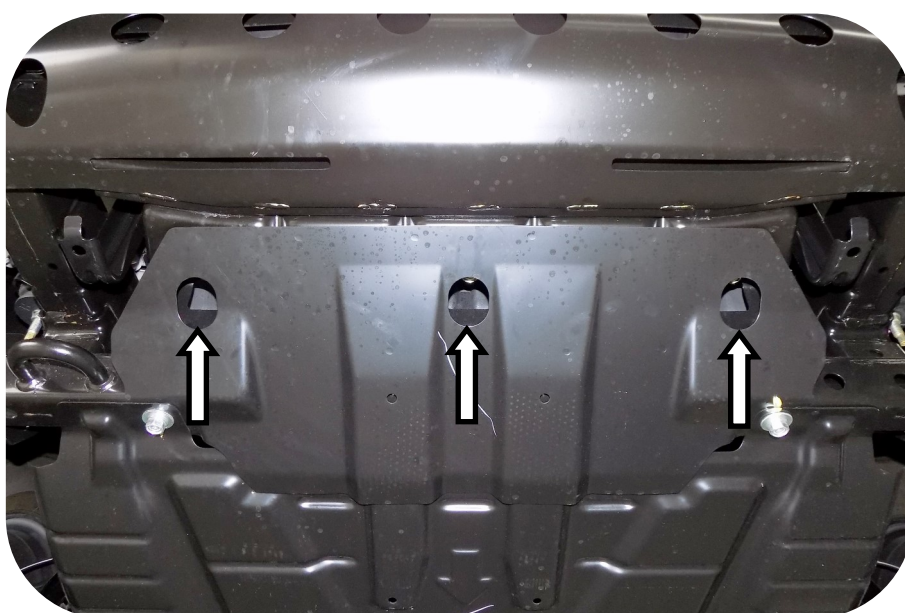
19. Disconnect the wiring loom for the indicators and fog lights, and where fitted, the loom for the parking sensors.



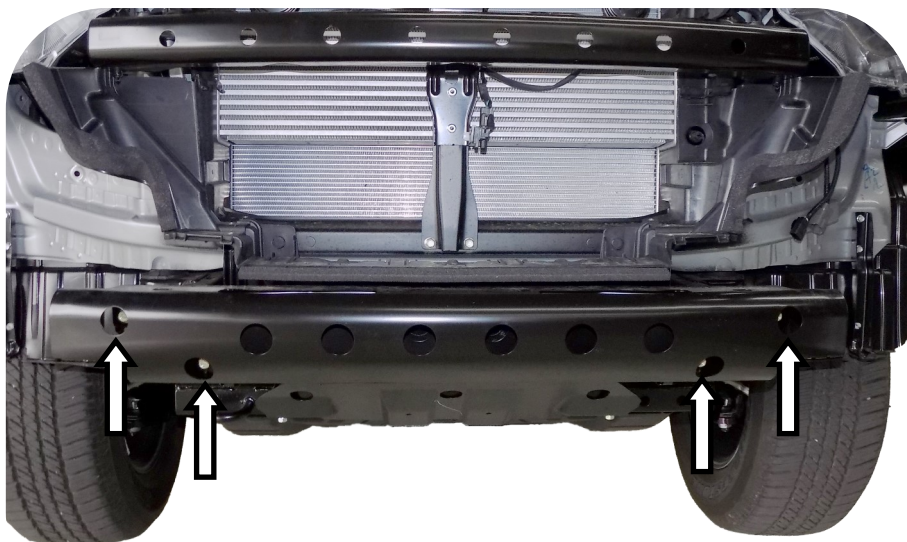
20. Carefully remove the bumper bar.



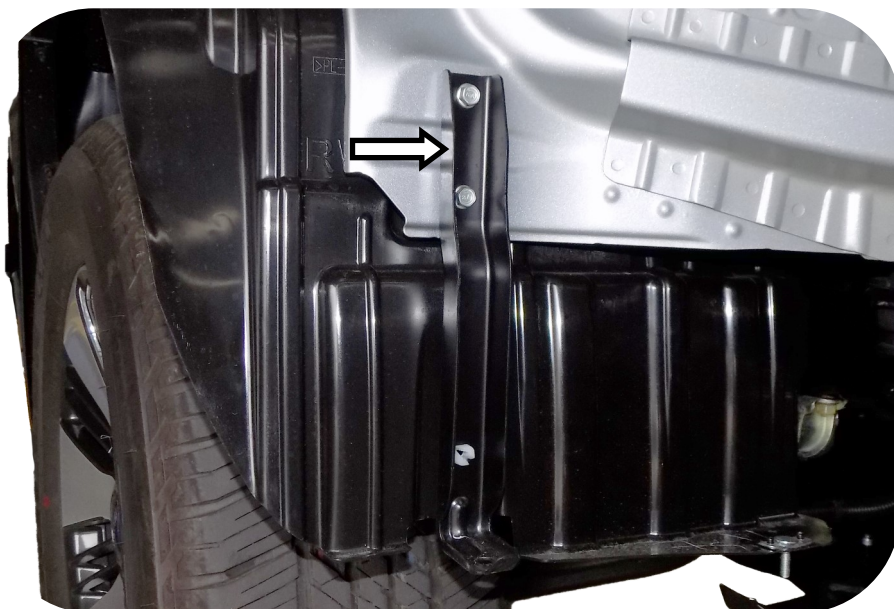
21. Remove and discard the three bolts securing the stone tray to the front intrusion beam.



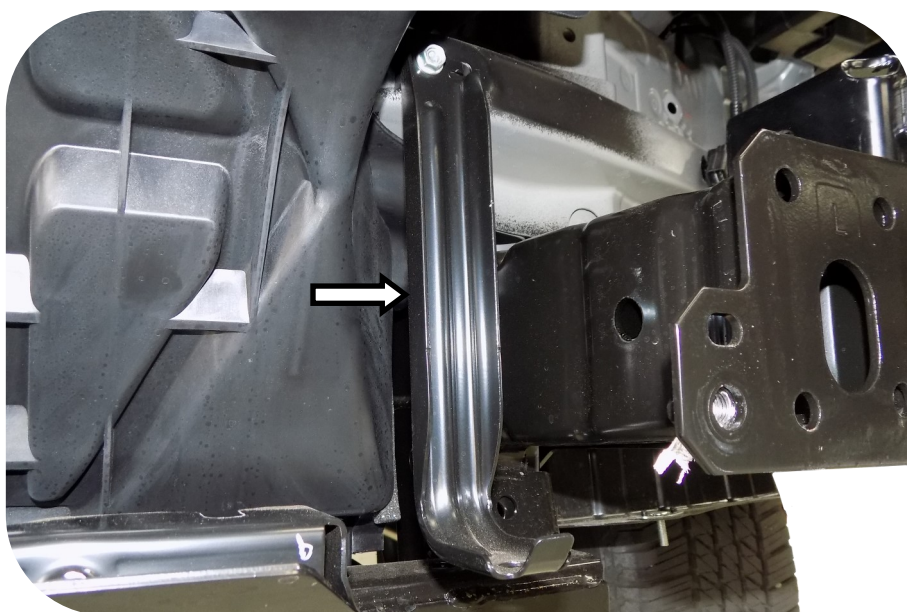
22. Remove and discard the front intrusion beam.



23. Remove and discard the two outer bumper support brackets.



24. Remove and discard the two inner bumper support brackets.



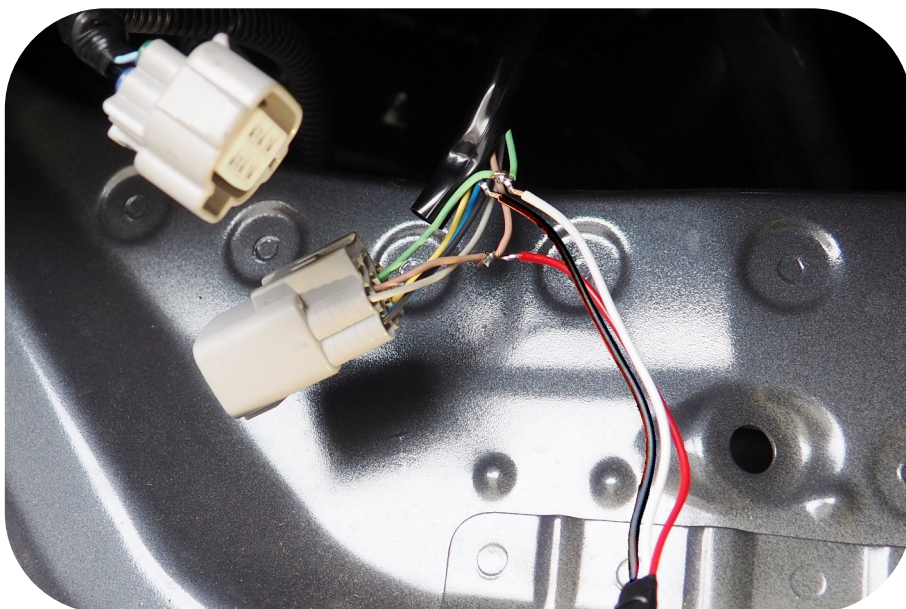
25. Remove the headlights to gain easier access to the vehicles wiring for the park and DRL's.
26. Using a LED test lamp or multi-meter confirm the park light and DRL wires.

NOTE: Vehicles wiring colour should be, light green for DRL and purple for park light.



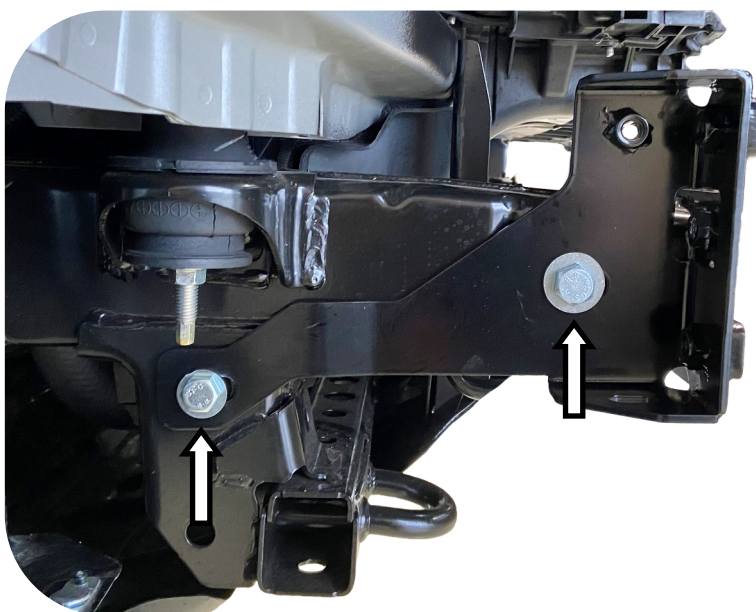
27. Splice and solder the red (park light), white (DRL) and black (earth) wires from the combination lamps into the vehicles loom.
28. If removed, replace the headlights.

NOTE: The indicator loom is in the bumper bar.



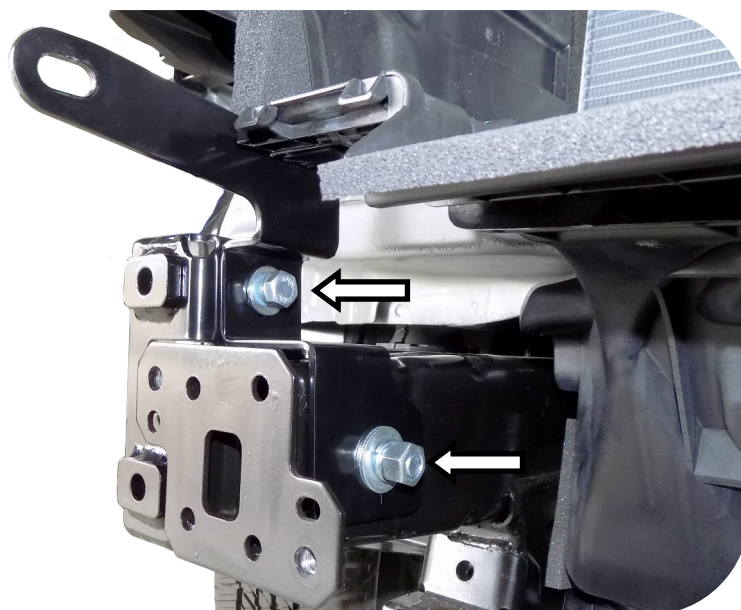
29. Fit the chassis support brackets (items 3 & 4) to the chassis at the rear using two M10 x 1.25 x 30mm hex bolts, two M10 flat washers and two M10 flange nuts, and at the front using two M12 x 90mm hex bolts, two M12 spring washers, four M12 flat washers and two M12 hex nuts.

Do not tighten.



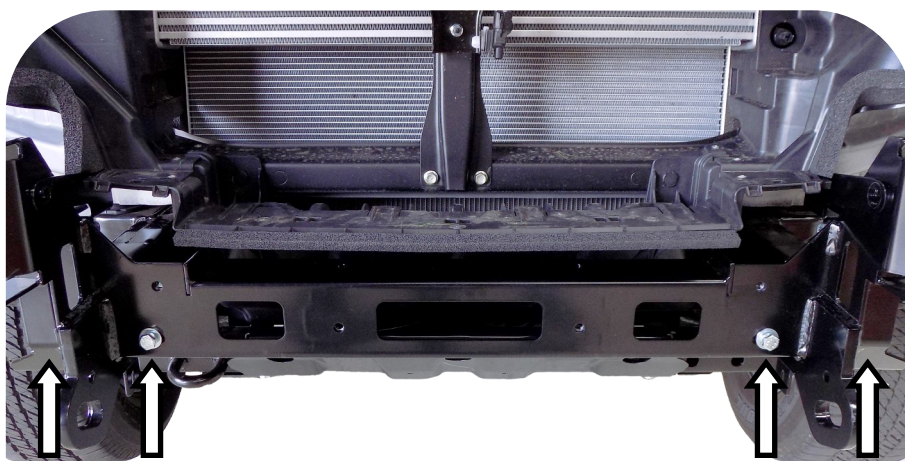
30. Fit the inner support brackets (items 5 & 6) using the previously installed M12 x 90mm hex bolts and two M10 x 1.5 x 35mm hex bolts, M10 spring and flat washers.

Do not tighten.



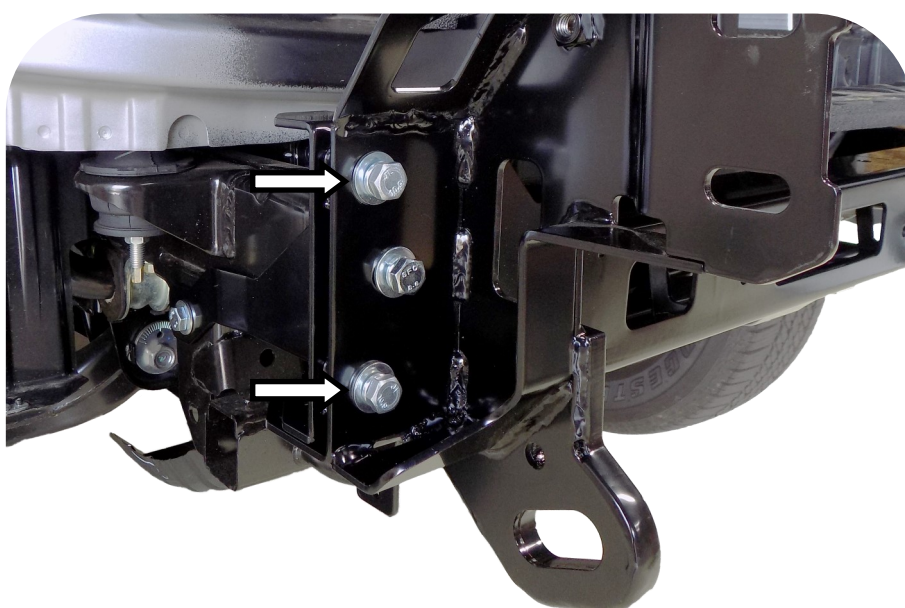
31. Install the chassis mount (item 2) to the chassis end plates using four M10 x 1.25 x 30mm hex bolts, M10 spring and flat washers.

Do not tighten.



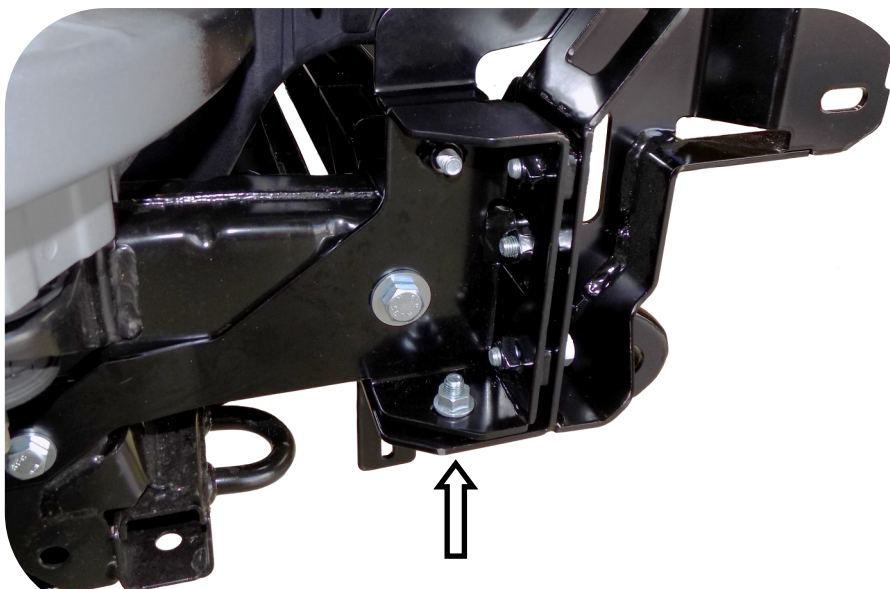
32. Secure the chassis mount to the chassis support brackets using four M10 x 1.5 x 35mm hex bolts, M10 spring and flat washers.

Do not tighten.



33. Secure the bottom of the chassis mount to the chassis support brackets using two M10 x 1.25 x 30mm hex bolts, two M10 flat washers and two M10 flange nuts.

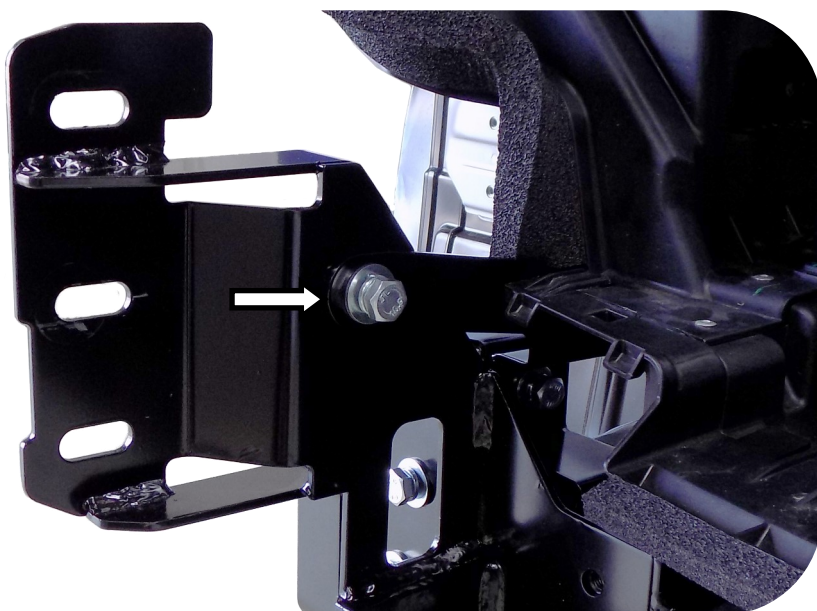
NOTE: Leave this bolt loose as the stone tray bracket is fitted using these bolts.



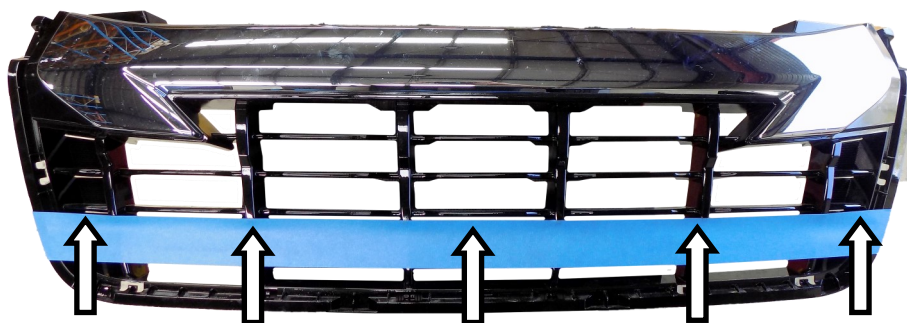
34. Secure the inner support brackets to the chassis bracket using two M10 x 1.5 x 35mm hex bolts, M10 spring and flat washers.

35. Align the chassis mount so that it is even on both sides to the body of the vehicle.

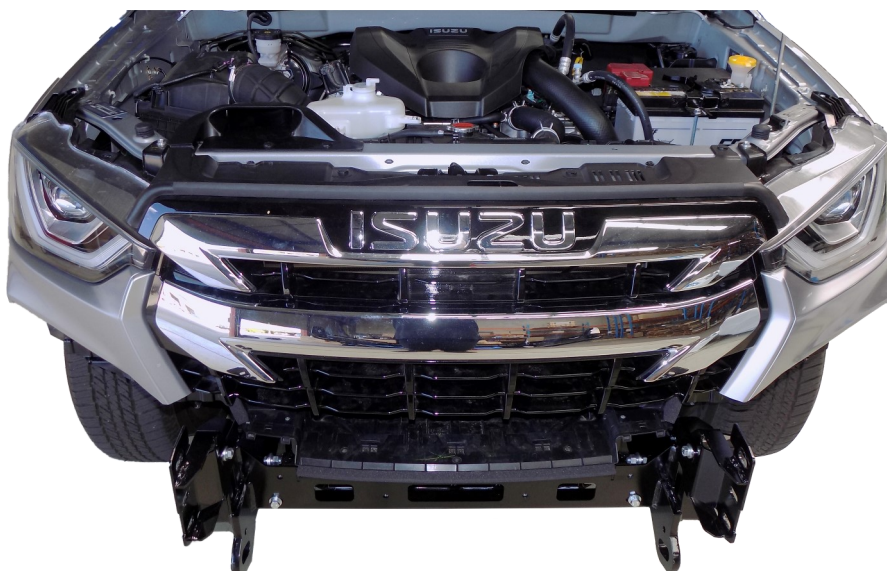
36. Tighten all fasteners to the correct torque except for the fasteners fitted in step 36.



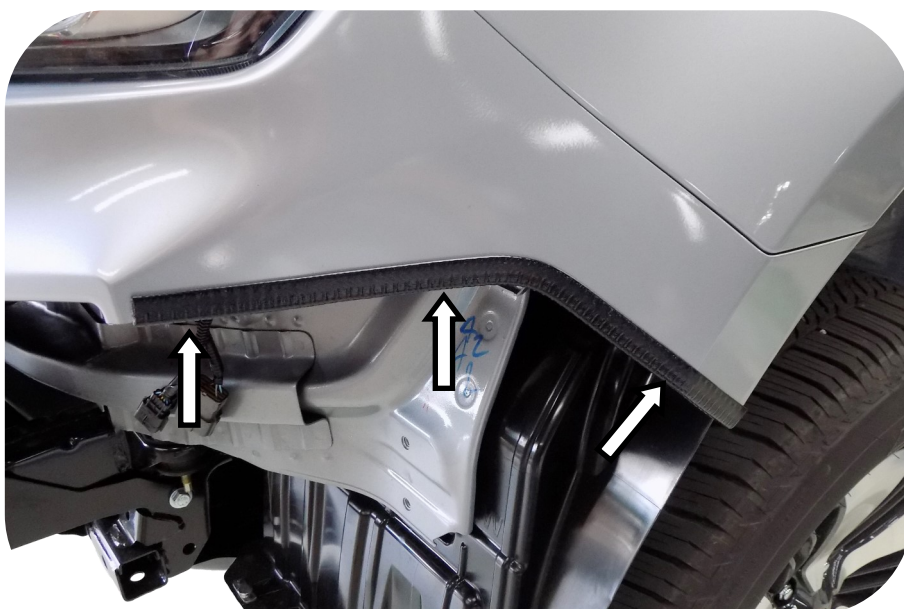
37. Using a multi tool or similar trim the bumper bar and grille as previously marked.



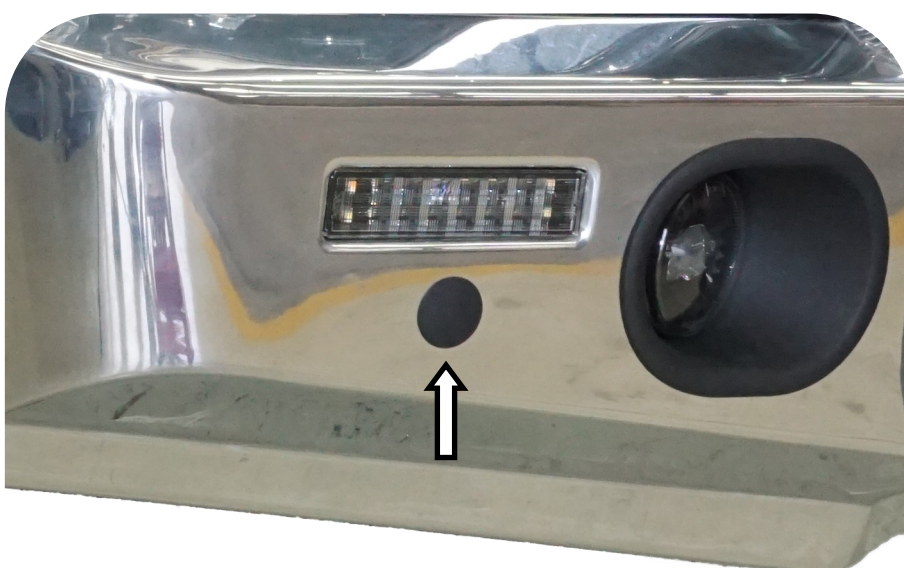
- 38. Re-fit the trimmed bumper to the vehicle using the fasteners removed earlier.
- 39. Re-fit the top grille section to the vehicle.
- 40. Re-fit the grille top cover using the original fasteners.



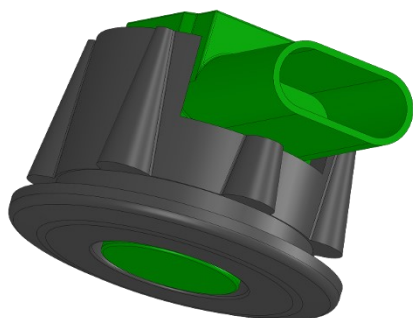
- 41. Fit the supplied pinch mould to the outer sections of the bumper bar as shown.



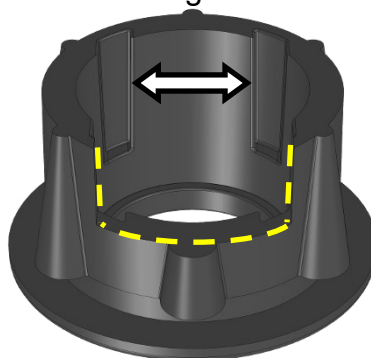
- 42. If parking sensors are not being fitted to the bar, fit the supplied blanking plugs.
- 43. If fitting fog lights, refer to the fitting instructions supplied with the fog light mounting kit.



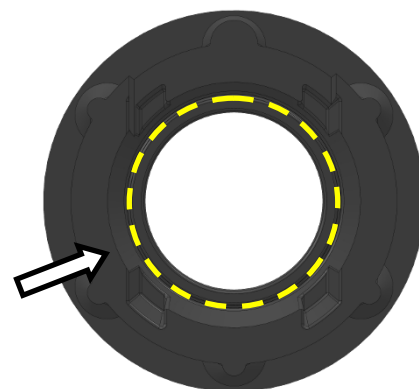
- 44. If fitting parking sensors, trim the supplied grommets to suit. Trim just enough so that the head of the sensor is level with the face of the grommet.



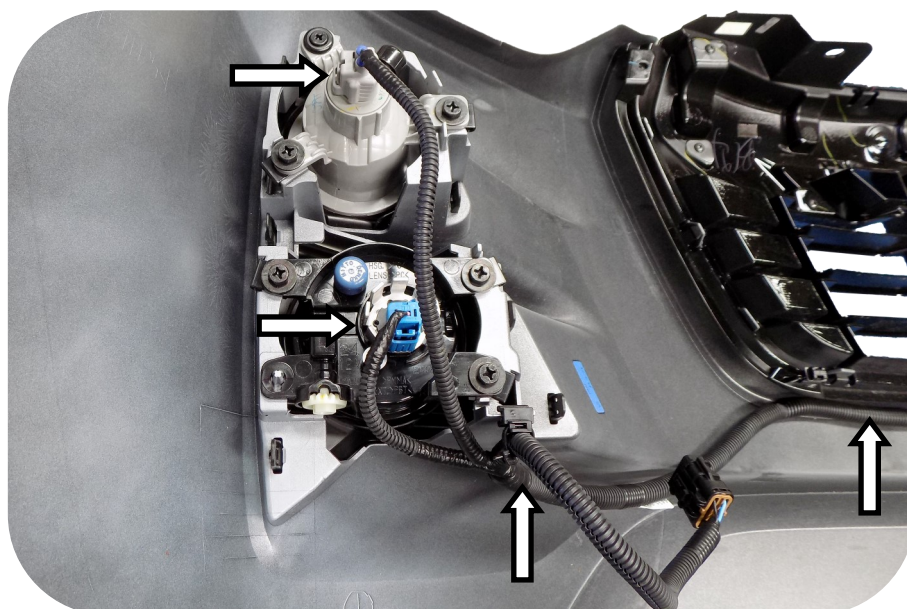
Guide grooves



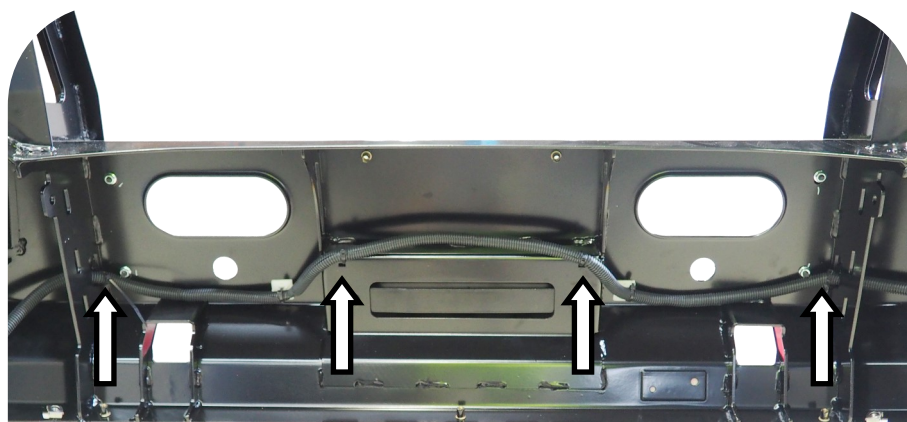
There is a groove in the rear face of the grommet. If the parking sensor head has a large diameter trim the centre.



- 45. Remove the indicator / fog light loom from the bumper.
- 46. Where fitted, remove the parking sensor loom from the bumper.
- 47. If parking sensors are fitted, take note of the location of the parking sensors and remove from the bumper.



- 48. Where fitted, re-fit the parking sensors into the bar.
- 49. Route the indicator / fog light loom, and where fitted, parking sensor loom through the holes in the uprights. Once in the correct location secure with cable ties.

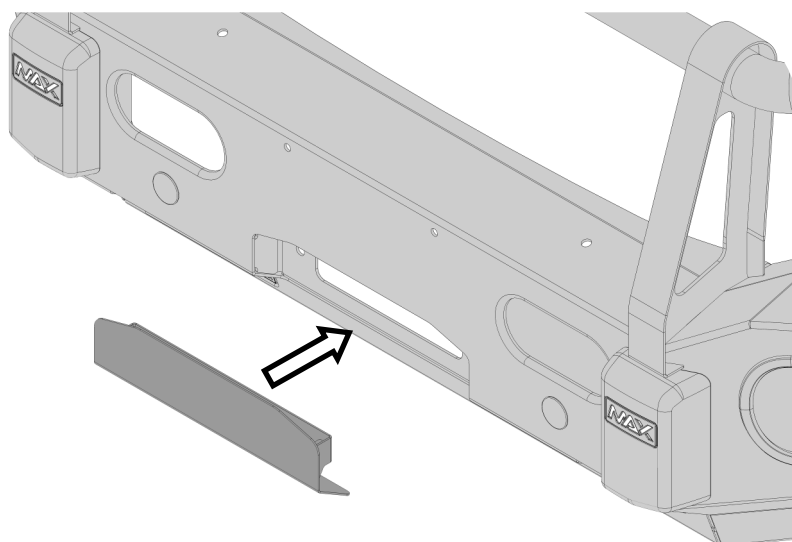


50. Locate the indicator positive and earth from the loom removed from the bumper bar. Splice and solder the indicator (green) and earth (black) from the combination lamp loom into the vehicles loom.

NOTE: Join to the combination loom that is hard wired to the combination lamp, not the extension.



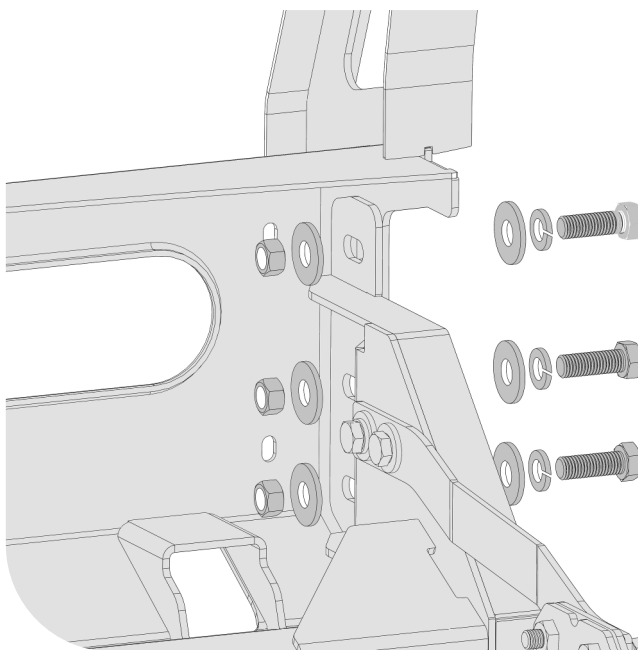
51. If no winch is being fitted, fit the supplied cover plate (item 7) to the bar using two M6 x 20mm bolts, M6 spring and panel washers.
52. Fit the ten cage nuts to the wings of the bull bar.
53. If fitting a winch, fit now using the instructions supplied with the winch and the D-Max-21 winch kit (MAX-DMAX21-WM) sold separately.



54. Lift the bull bar onto the chassis mount.

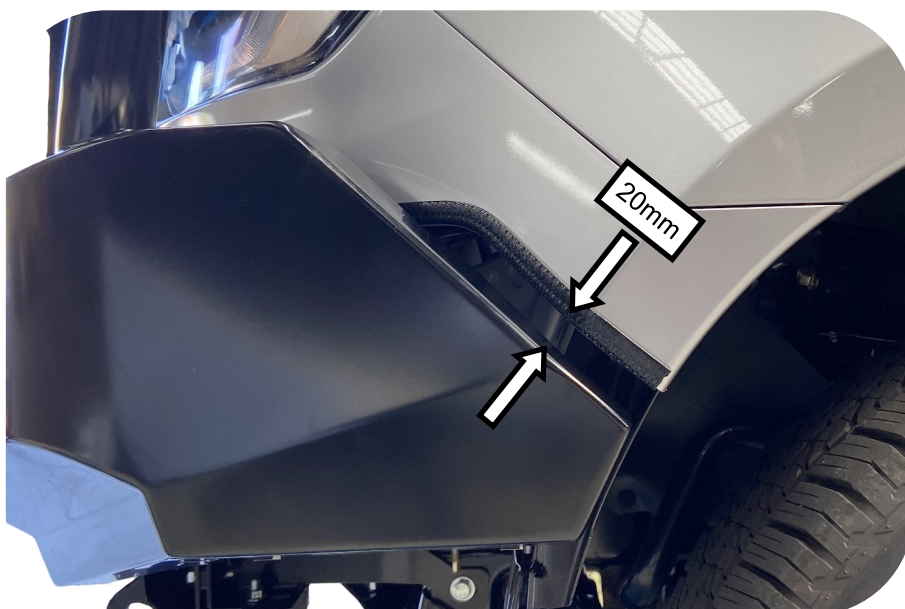


55. Secure the bar to the chassis mounts using six M12 x 35mm hex bolts, six M12 spring washers, twelve M12 flat washers, and six M12 hex nuts. Tighten enough so that the bar is secure but still able to be adjusted.

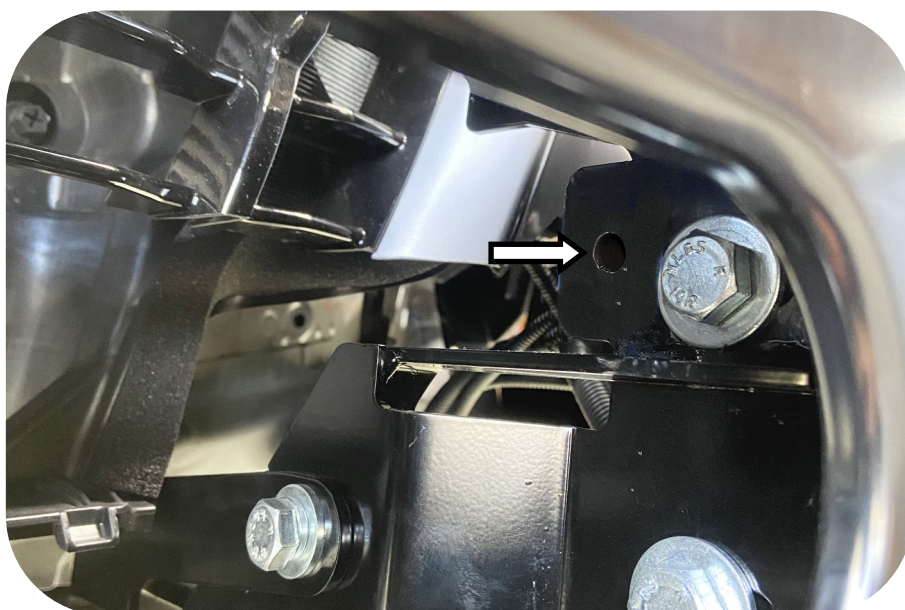


56. Adjust the bar so that the end of the wings are parallel to the guard with a minimum 20mm gap to the bumper cut. Once happy with the fit of the bull bar, tighten the six bolts to the correct torque.

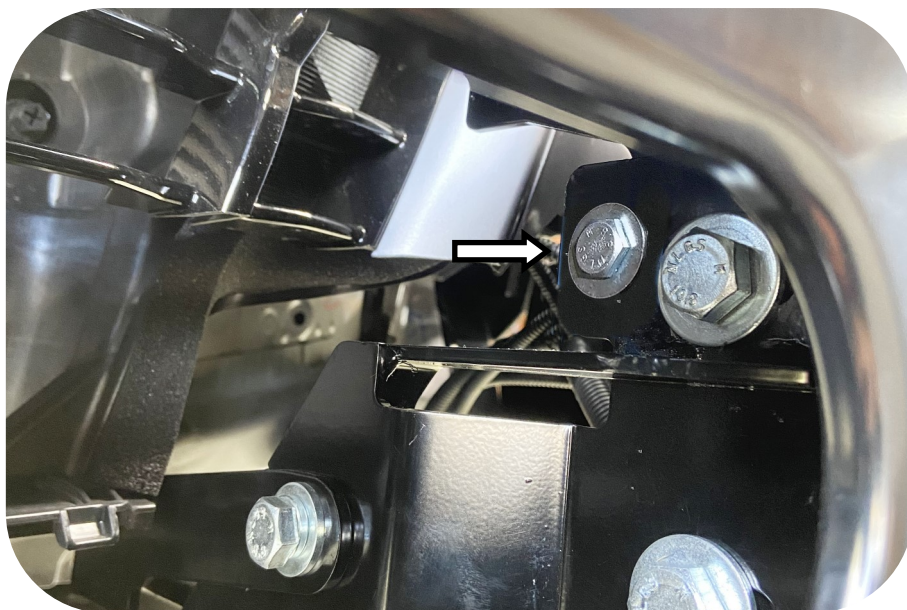
NOTE: If the bar is not even side to side, loosen the chassis mounting bolts to enable adjustment. Once centred, tighten all the mounting bolts to the correct torque.



57. Drill a pinning hole with a 10mm drill bit using the hole in the upright as a guide.
58. Deburr and treat with rust preventative.
59. Connect combination lamp looms, re-connect fog light loom, and where fitted, parking sensor loom. Check everything is working correctly.

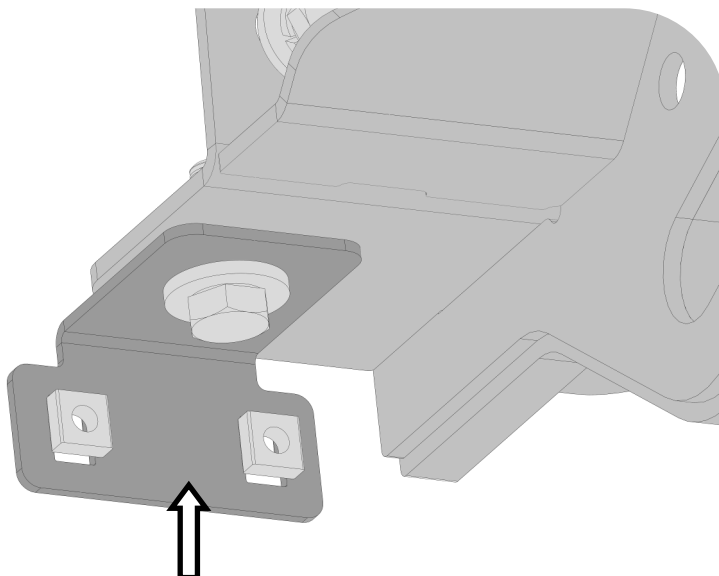


60. Secure using a M10 x 1.25 x 30mm bolt, M10 flat washer and M10 flange nut.
61. Repeat for the other side.



62. Fit the four M6 cage nuts to the stone tray brackets (item 11). Fit the stone tray brackets to the bottom of the chassis mount bracket, both sides, using the fasteners fitted and left loose in step 36.

Do not tighten.

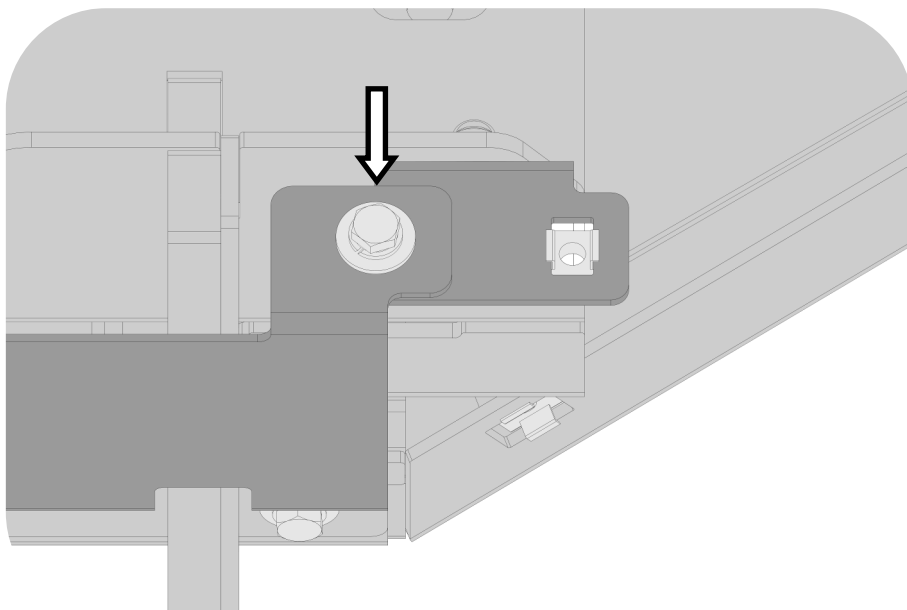


63. Fit the centre stone tray (item 8) using three M6 x 20mm hex bolts, M6 spring and panel washers.

Do not tighten.



64. Secure the stone tray to the stone tray bracket using a M6 x 20mm hex bolt, M6 spring and panel washer.
65. Align the stone tray, tighten the stone tray bolts to the correct torque.
66. Tighten the M10 bolt securing the stone tray bracket to the correct torque.



67. Fit or hold the outer stone trays in place so that a line can be marked on the inner guard where it meets the bottom of the stone tray.

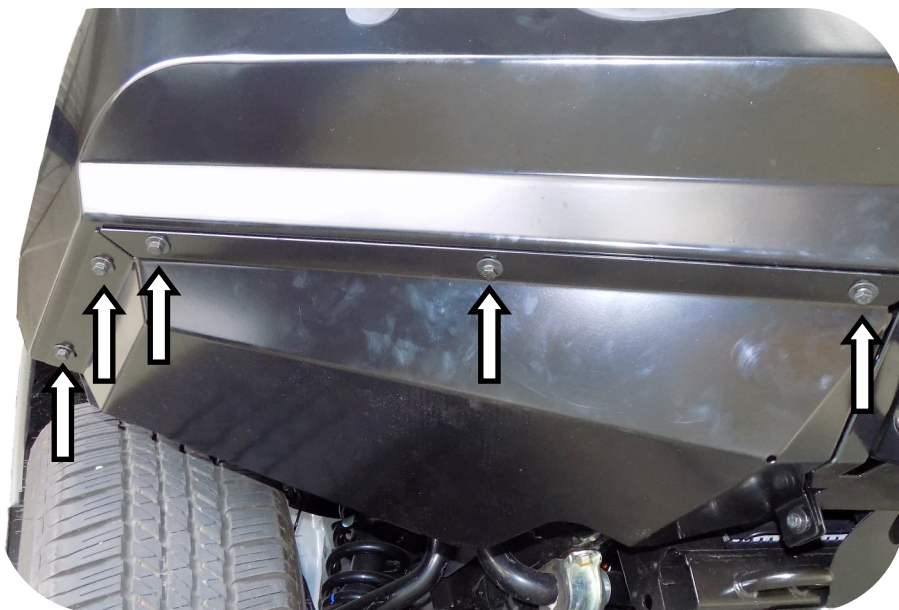


68. Trim the inner guard approximately 5mm above the marked line.
69. Confirm all wires have been routed and secured away from any sharp, hot or moving parts.

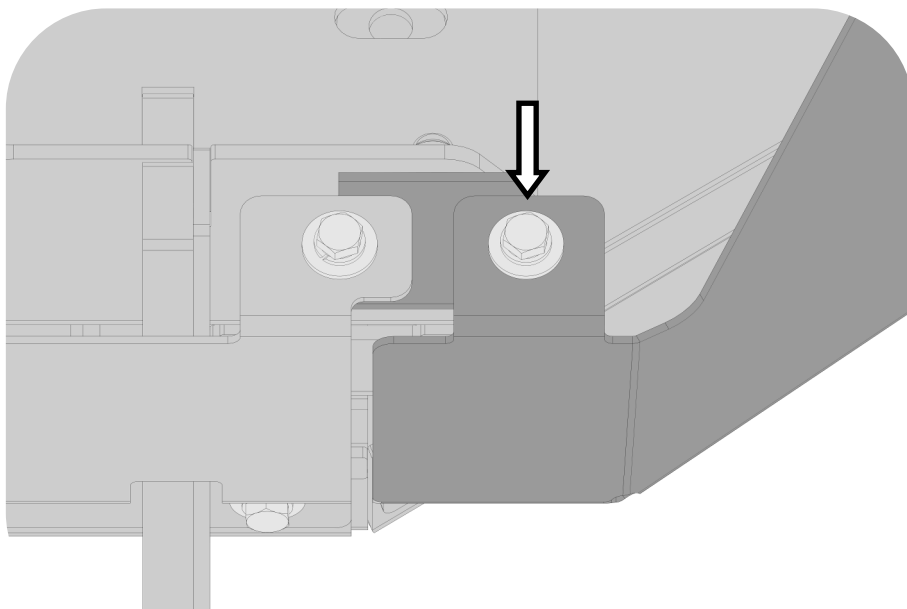


70. Ensure the inner guard is tucked in behind the rear flange of the stone tray.
71. Secure the right hand stone tray (Item 9) to the bar with five M6 x 20mm hex bolts, M6 spring and panel washers.

Do not tighten.



72. Secure the stone tray to the stone tray bracket using a M6 x 20mm hex bolt, M6 spring and panel washer.
73. Align the stone tray, tighten the stone tray bolts to the correct torque.
74. Repeat for the LHS using the LH stone tray (item 10).



75. Fit the number plate to the bar using two M6 pan head screws.





CONTACT US

16 COMBARTON STREET

BRENDALE QLD 4500

PH. 07 3204 0311

E. INFO@MAX4X4.COM.AU

WWW.MAX4X4.COM.AU