



PART NUMBER
MAX-FRPX-MKIII
MAXPR-FRPX-MKIII

APPLICATION
FORD RANGER
PX-MKIII 09-18 ON

FITTING TIME
300 MIN

REV-07





- Do not attach VFPS to the vehicle using anchorages not intended for this purpose (e.g. engine mounting bolts).
- Do not use this product for any vehicle make or model, other than those specified by the VFPS manufacturer.
- Do not remove the plaque or label from the VFPS.
- Do not modify the structure of the VFPS in any way.

Read instructions thoroughly before commencing any work. Check that all parts listed in this manual are included and that there is no damage to any parts.

Always wear safety glasses and hearing protection. Make sure work area is kept clean at all times.

During the installation of this product it may have been necessary to move driver aids. Some of these may need to be re-calibrated after fitment by the dealer. All care is taken to test that these aids will work as the manufacture intended but not all circumstances can be tested. The driver remains responsible for the vehicle at all times.

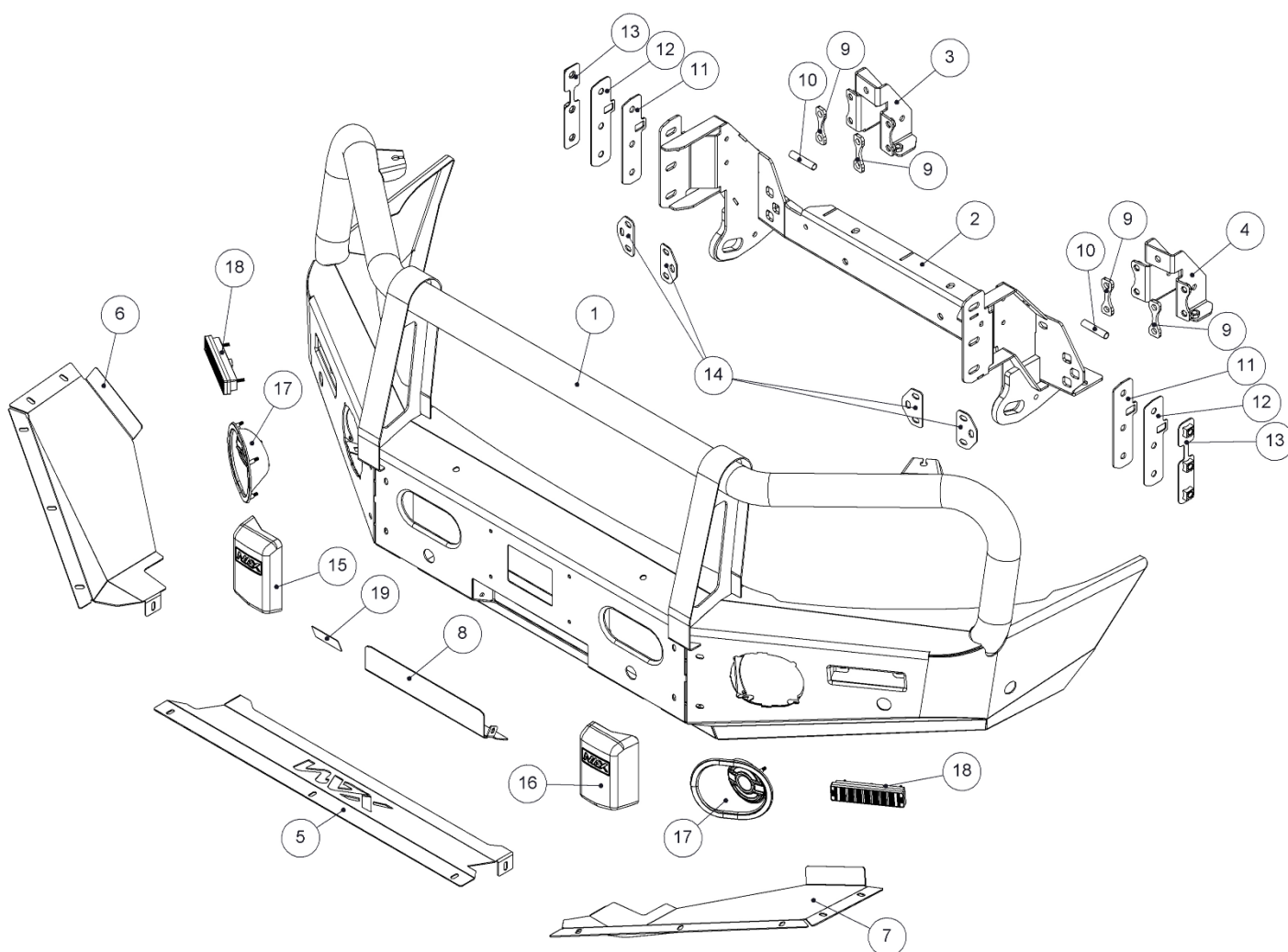
Wash and dry the vehicle regularly using car wash to maintain the appearance of this product.

These instructions are to be given to the customer on completion of the job.

| BOLT SIZE | TORQUE Nm | TORQUE ft.lb |
|-----------|-----------|--------------|
| M5 | 5 | 4 |
| M6 | 9 | 7 |
| M8 | 22 | 16 |
| M10 | 44 | 32 |
| M12 | 77 | 57 |

NOTE

THESE BARS ARE SUITABLE ONLY FOR SYNTHETIC ROPE WINCH FITMENT



| ITEM | DESCRIPTION | QTY |
|------------------|-----------------------------|-----|
| 1 | Channel assembly | 1 |
| 2 | Chassis mount | 1 |
| 3 | Chassis support bracket RH | 1 |
| 4 | Chassis support bracket LH | 1 |
| 5 | Stone tray centre | 1 |
| 6 | Stone tray outer RH | 1 |
| 7 | Stone tray outer LH | 1 |
| 8 | Winch cover plate | 1 |
| 9 | Chassis support spacer | 4 |
| 10 | Chassis crush tube | 2 |
| 11 | Mount spacer 3mm | 2 |
| 12 | Mount spacer 2mm | 2 |
| 13 | Bar nut plate | 2 |
| 14 | Washer plate | 4 |
| 15 | Override type A RH | 1 |
| 16 | Override type A LH | 1 |
| 17 | Fog light housing type A | 2 |
| 18 | Combination + DRL lamp | 2 |
| 19 | MAX Gel sticker small | 1 |
| FASTENERS | | |
| 1 | M12 x 1.75 x 40mm Hex bolt | 6 |
| 2 | M12 Spring washer | 6 |
| 3 | M12 Flat washer | 6 |
| 4 | M10 x 1.25 x 100mm Hex bolt | 2 |
| 5 | M10 x 1.25 x 35mm Hex bolt | 4 |
| 6 | M10 x 1.25 x 25mm Hex bolt | 2 |
| 7 | M10 x 1.5 x 30 Hex bolt | 4 |
| 8 | M10 x 1.5 x 35 Hex bolt | 12 |
| 9 | M10 Spring washer | 20 |
| 10 | M10 Flat washer 26mm | 24 |
| 11 | M10 Flange nut | 8 |
| 12 | M6 x 35mm Hex bolt black | 2 |
| 13 | M6 x 20mm Hex bolt black | 15 |
| 14 | M6 x 16mm Pan head screw | 2 |
| 15 | M6 Spring washer black | 13 |
| 16 | M6 Panel washer black | 17 |

| ITEM | DESCRIPTION | QTY |
|------|------------------------|-----|
| 17 | M6 Flat washer black | 2 |
| 18 | M6 Flange nut | 14 |
| 19 | M6 Cage nut suit 2.5mm | 10 |
| 20 | M6 Rivnut | 3 |
| 21 | M5 Nyloc nut | 8 |
| 22 | Parking sensor grommet | 6 |
| 23 | Parking sensor plug | 6 |



- BASIC TOOL KIT
- TORX BITS
- TORQUE WRENCH
- RIGHT ANGLE DRILL
- SHORT 10mm DRILL BIT
- AIR HACKSAW
- FILE OR SANDPAPER
- MASKING TAPE (50mm)
- FELT TIPPED MARKER
- LED TEST LIGHT / MULTIMETER
- SOLDERING IRON
- ANTI RUST PAINT
- ELECTRICAL TAPE
- CABLE TIES



1. Locate vehicle in a suitable area.



2. Where fitted, remove the number plate.



3. Remove and retain the radiator top cover and fasteners.



4. Remove and retain the two screws securing the top of the grille.



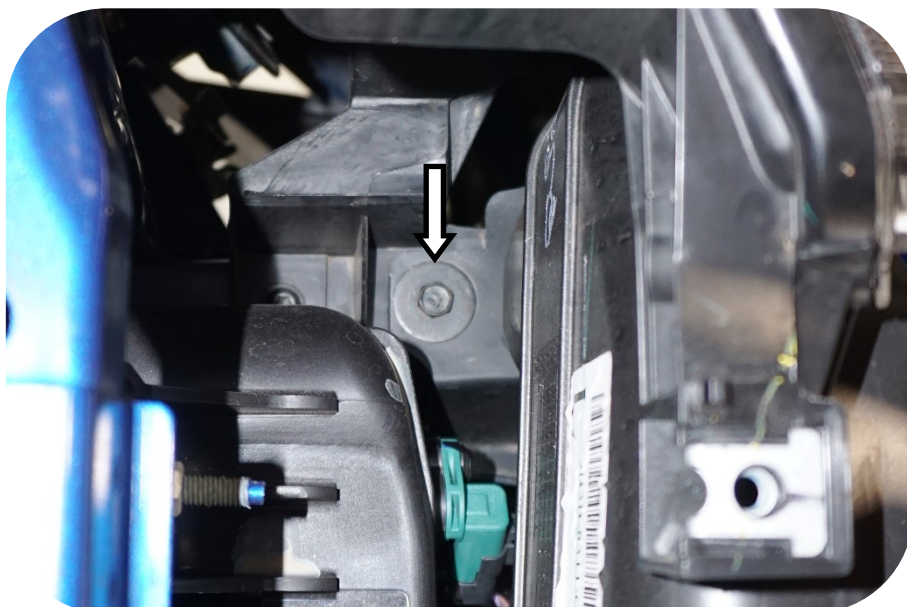
5. Carefully unclip and remove the grille.



6. Remove and retain the four plastic clips securing the top of the bumper bar.

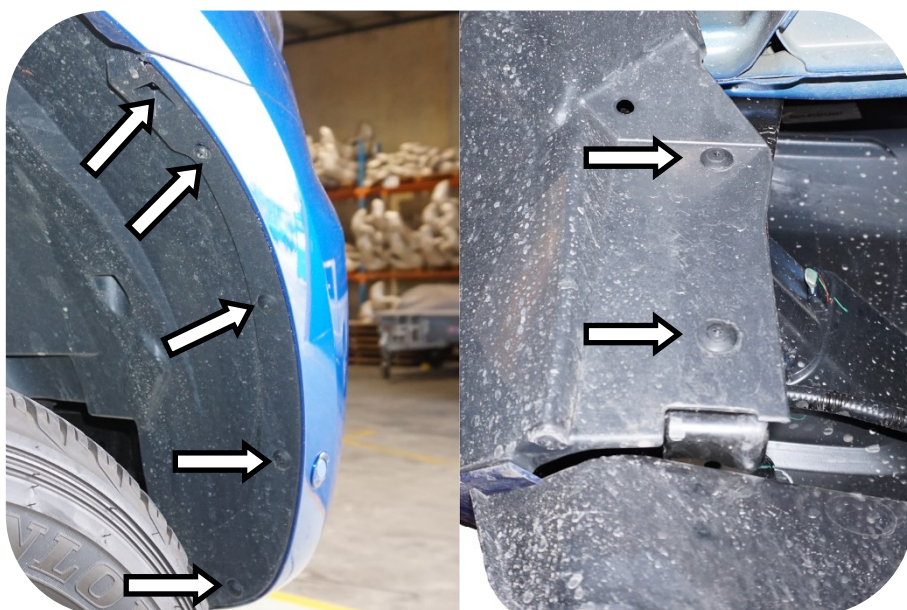


7. Remove and retain the two screws behind the headlights.

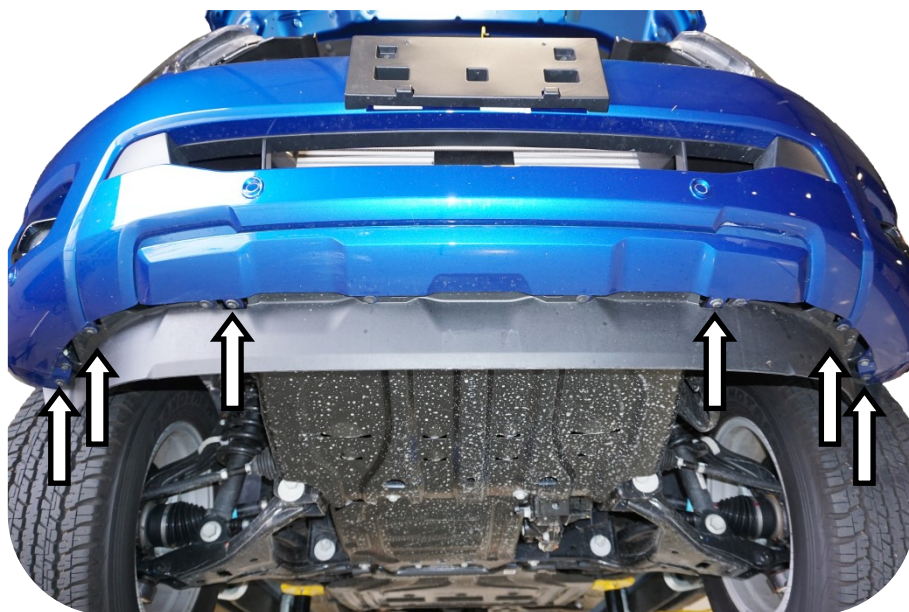


8. Remove and discard the five fasteners securing the inner guard to the bumper bar. Repeat for the opposite side.

9. Remove and discard the two fasteners securing the inner guard to the inside of the bumper bar. Repeat for the opposite side.



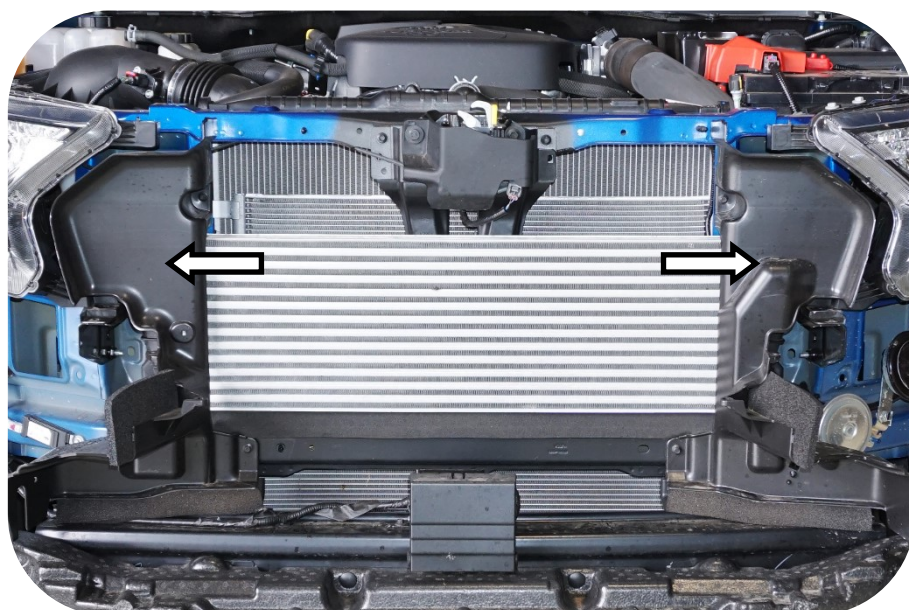
10. Remove and discard the fasteners securing the bottom of the bumper bar.



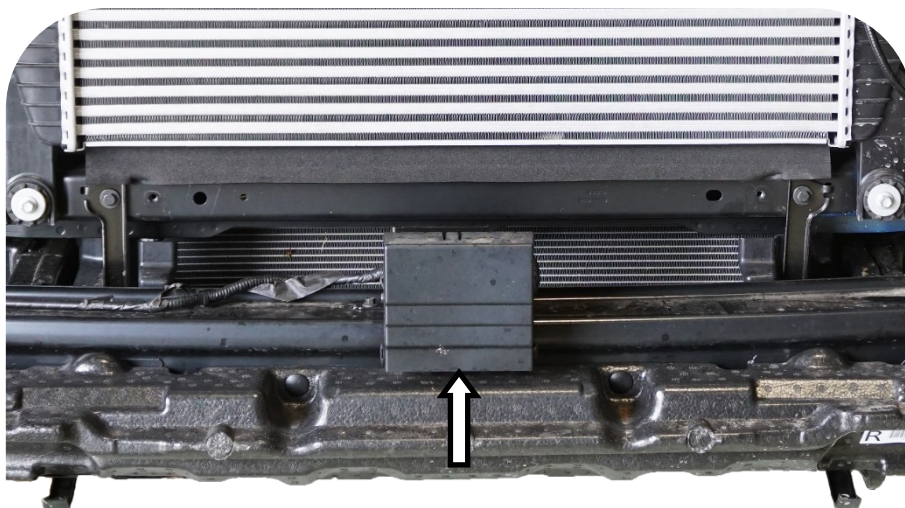
11. Remove the bumper bar.



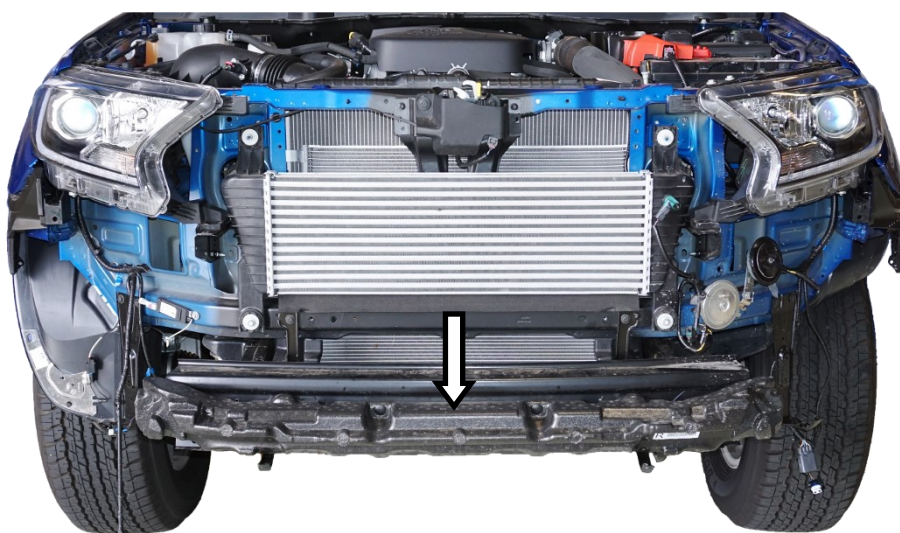
12. Remove and retain the upper air guides and fasteners.



13. Carefully unclip, remove and retain the vehicles radar unit. Place in a location where the unit can't be damaged.



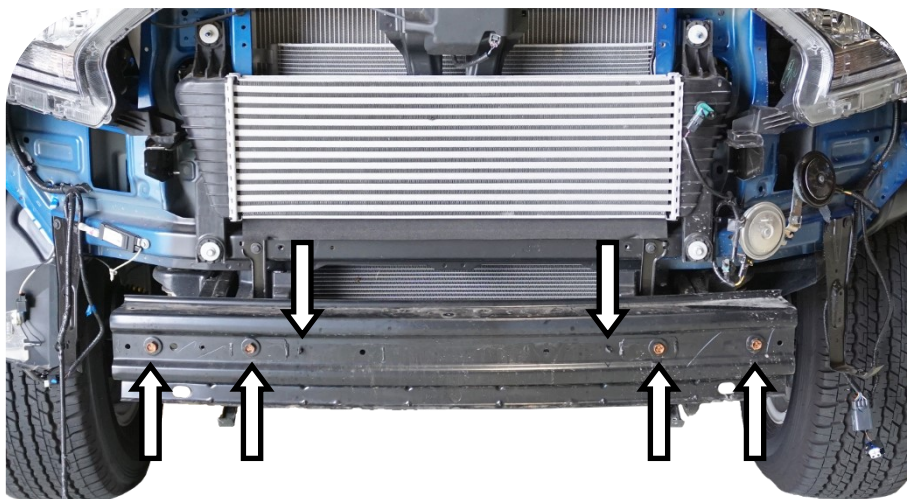
14. Remove and discard the foam section attached to the front of the intrusion beam.



15. Remove and discard the front two bolts securing the stone tray to the intrusion beam.
16. Loosen the rear two bolts, remove and retain the stone tray.



17. Unclip the air guides connected to the rear of the front intrusion beam. Remove and discard the front intrusion beam.



18. Remove and discard the two inner bumper retaining brackets.



19. Remove and discard the two outer bumper retaining brackets.
20. Carefully remove the DAB radio antenna from the inner guard (RH). Retain for re-fitment.



21. Remove and retain the top bumper locating brackets.



22. Remove the headlights to access the wiring for the indicators, park and DRL.
23. Using a LED test lamp or multi-meter confirm the wires.
24. Splice and solder the loom from the combination lamps into the vehicles loom.



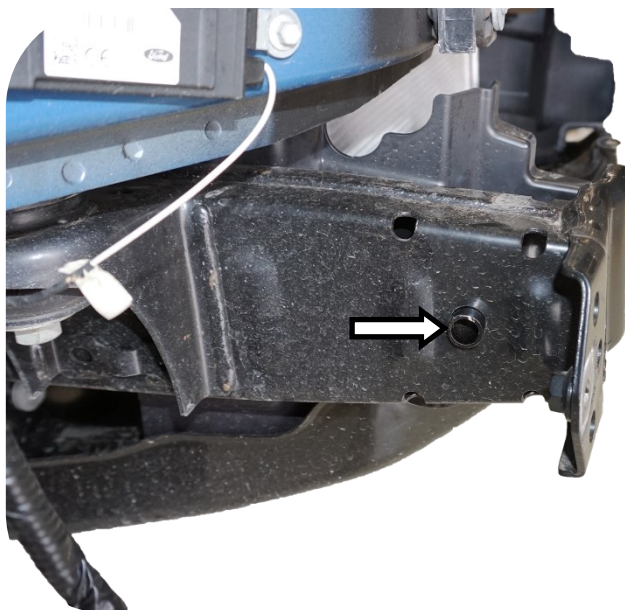
COMBINATION LAMP WIRING

| | | |
|-------|---|------------|
| WHITE | = | DRL |
| GREEN | = | INDICATOR |
| RED | = | PARK LIGHT |
| BLACK | = | EARTH |

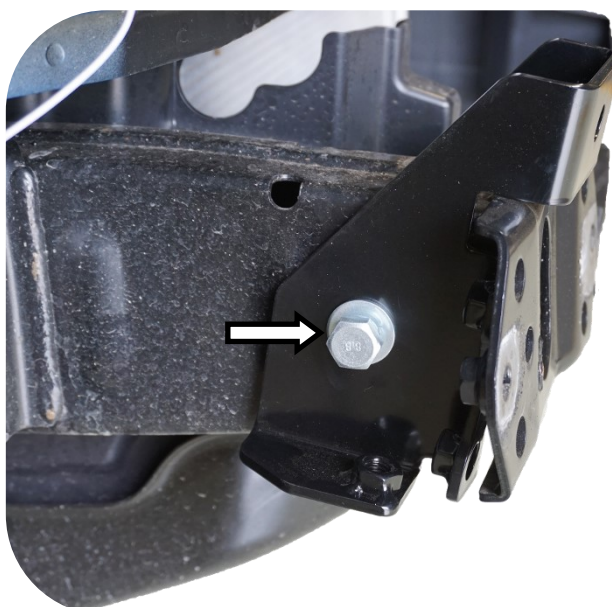
25. Replace the headlights.



26. Insert a crush tube (item 6) into the hole at the front of both chassis rails.



27. Place the chassis support brackets (items 3 & 4) over the chassis rails and secure with two M10 x 100mm hex bolts, two M10 spring and flat washers and two M10 flange nuts. Do not tighten.



28. Insert four chassis support spacers (item 5) between the chassis end plates and chassis support brackets.



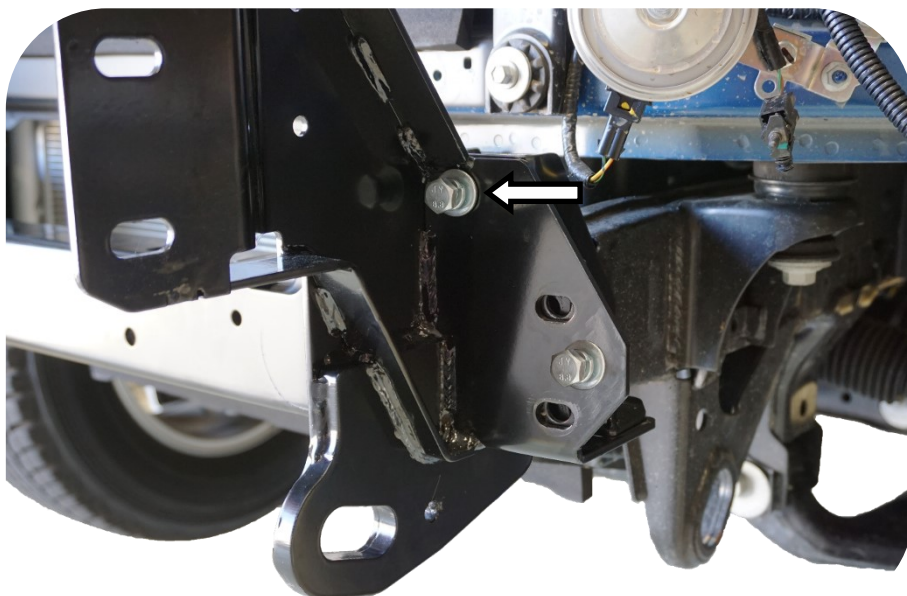
29. Attach the chassis mount (item 2) to the chassis end plates using four M10 x 1.5 x 30mm hex bolts, four M10 spring washers and four washer plates (item 7).

Do not tighten.



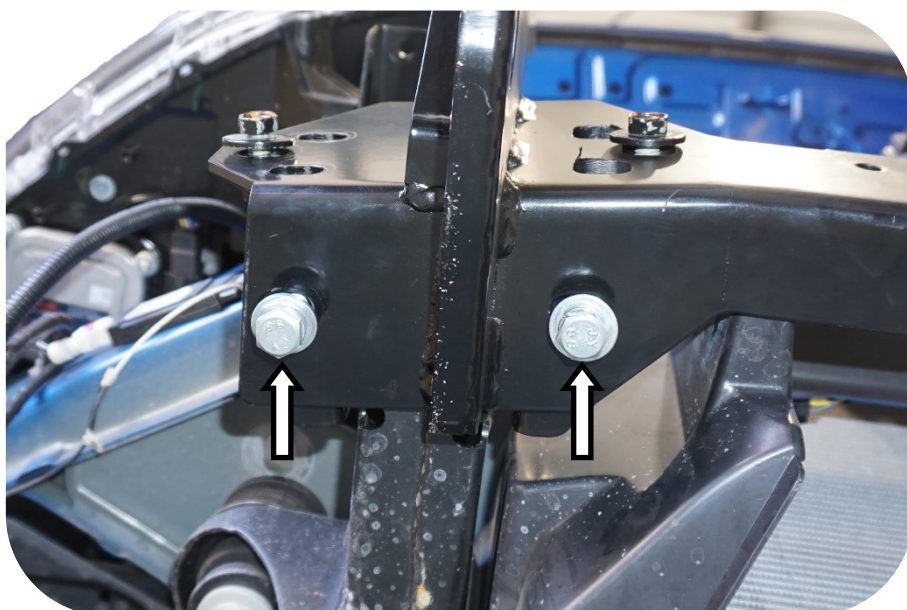
30. Secure the top of the chassis support brackets to the chassis mount with two M10 x 1.25 x 35mm hex bolts, M10 spring and flat washers and M10 flange nuts.

Do not tighten.



31. Secure the bottom of the chassis mount to the chassis support brackets with four M10 x 1.5 x 35mm hex bolts, M10 spring and flat washers.

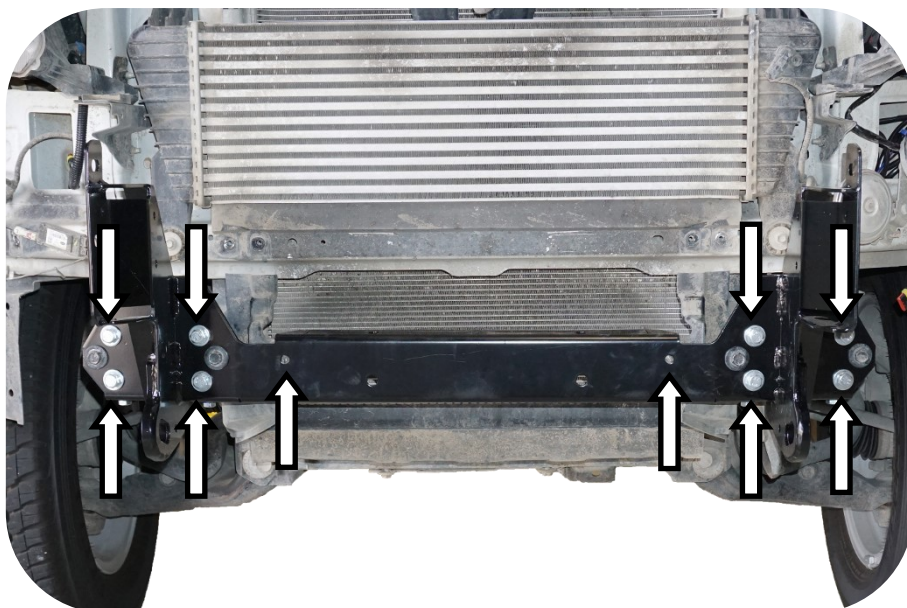
Do not tighten.



32. Secure the front of the chassis mount to the chassis support brackets using eight M10 x 1.5 x 35mm hex bolts and eight M10 spring washers.

33. Adjust the chassis mount so that it is central and tighten all the fasteners to the correct torque.

34. Re-attach the lower air guides to the chassis mount.

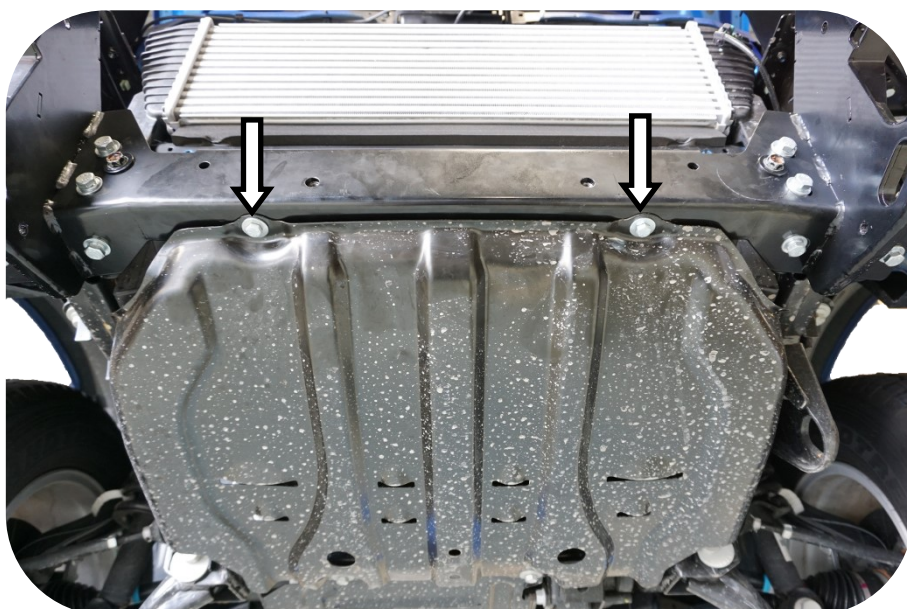


35. If fitting a winch, fit now using the instructions supplied with the winch and the Ranger winch kit (MAX-FRPX-WM) sold separately.

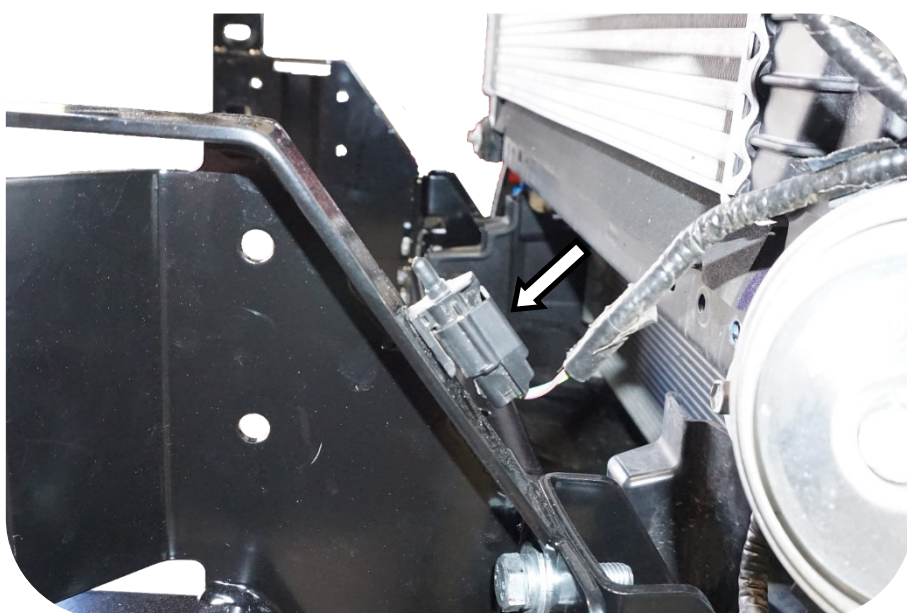
NOTE: Suitable for synthetic rope winch only.

36. Re-fit the OE stone tray. Secure the front to the chassis mount with two M10 x 25mm hex bolts, M10 flat washers and M10 flange nuts.

Tighten to the correct torque.

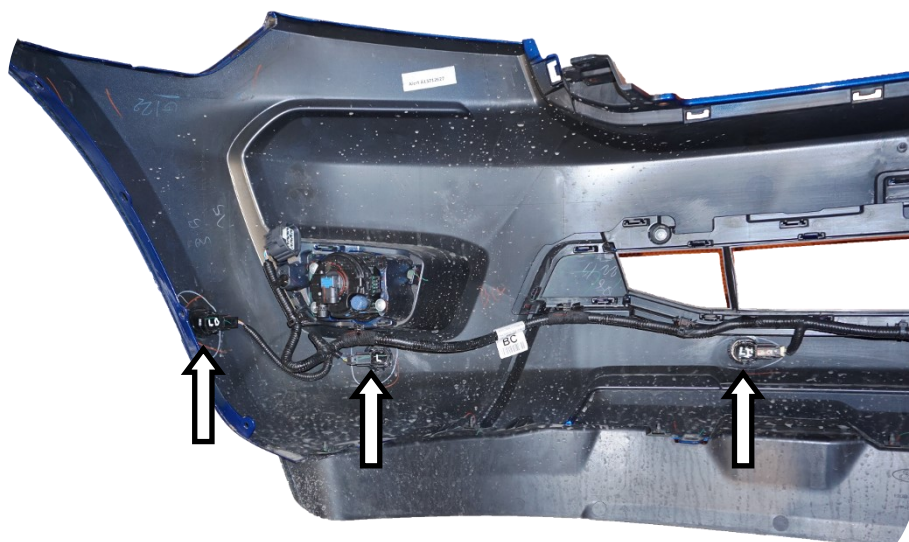


37. Re-fit the temperature sensor to the rear surface of the chassis mount.

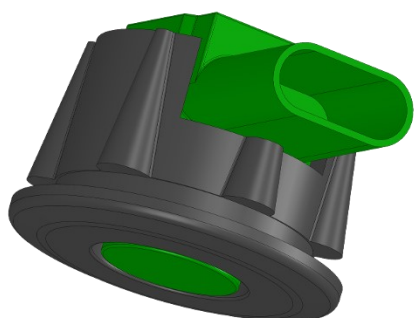


38. If fitted, remove the parking sensors and parking sensor wiring loom from the bumper bar.

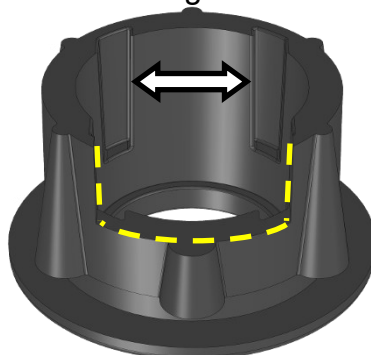
NOTE: Mark the parking sensors so that they are fitted to the bull bar in the same position and orientation as they were fitted in the bumper bar.



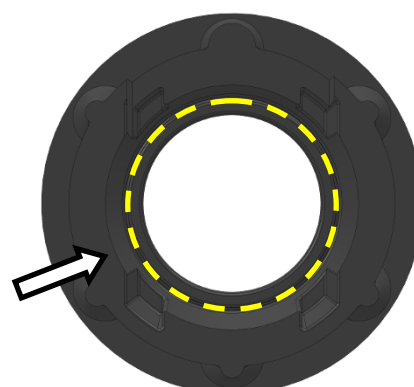
39. Trim the supplied grommets to suit the parking sensors. Trim just enough so that the head of the sensor is level with the face of the grommet.



Guide grooves



There is a groove in the rear face of the grommet. If the parking sensor head has a large diameter trim the centre.



40. Fit the parking sensor grommets, parking sensors and wiring loom to the bull bar. Secure the wiring loom with cable ties.
41. Fit the 10 M6 cage nuts to the bull bar.

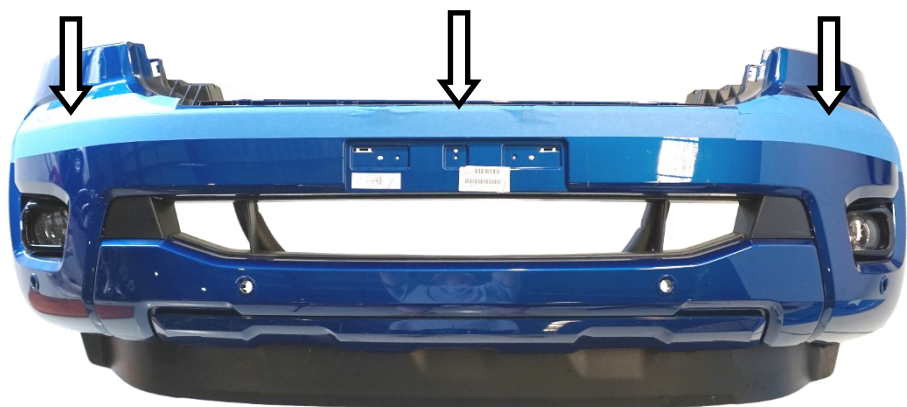


42. If no winch is being fitted, fit the winch cover plate (item 14) using two M6 x 20mm bolts, two M6 flat washers and two M6 flange nuts.

43. If the vehicle is equipped with Radar Cruise Control, fit the radar unit to the bar using the Tech Pack (MAX-FRPX-TECH) sold separately. Follow the instructions supplied with the Tech Pack Kit.

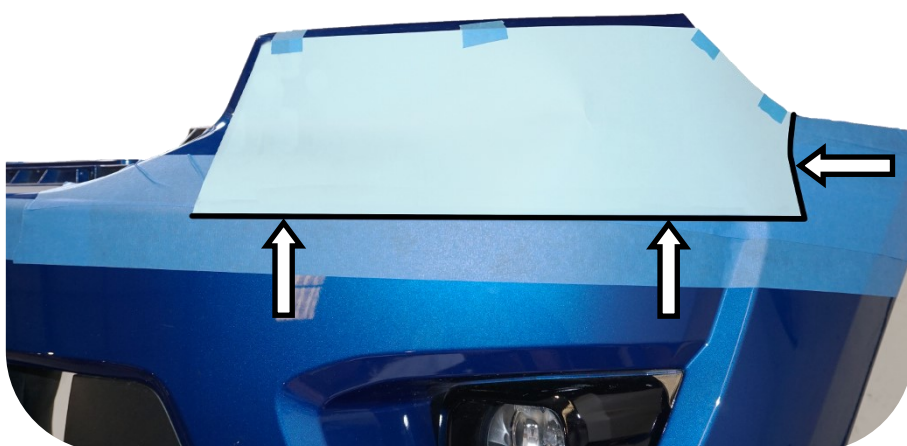


44. Apply masking tape to the vehicles bumper bar as shown.



45. Cut out the bumper template (included at the end of these instructions).
46. Apply the template to the bumper as shown. Mark a line along the edge of the template. Repeat for the opposite side.

NOTE: Check the scale on the template to ensure it has been printed correctly. If the scale is not correct contact MAX 4X4 before proceeding.



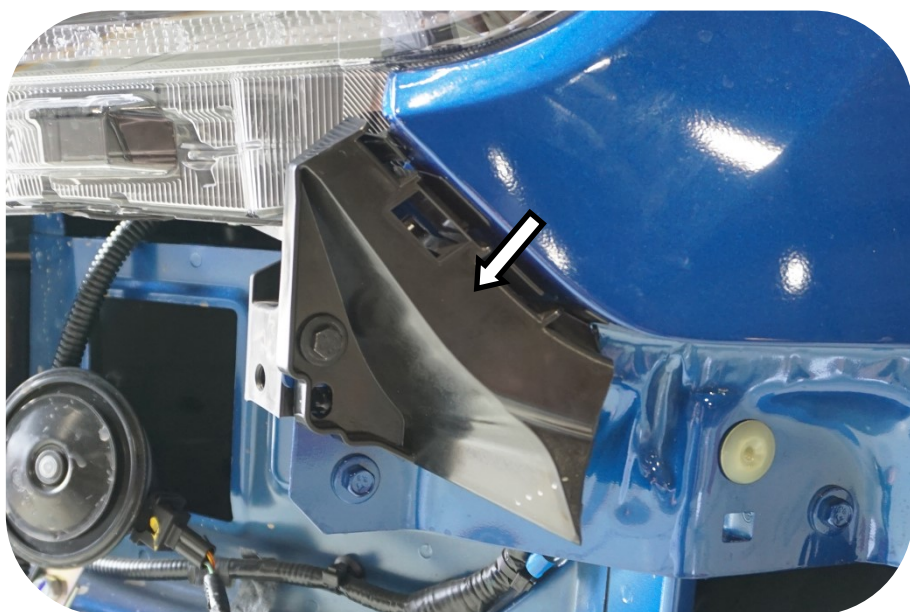
47. Draw a line across the bumper and grille joining the ends of the lines marked previously.
48. Trim the bumper and grille as previously marked. Discard the lower section.



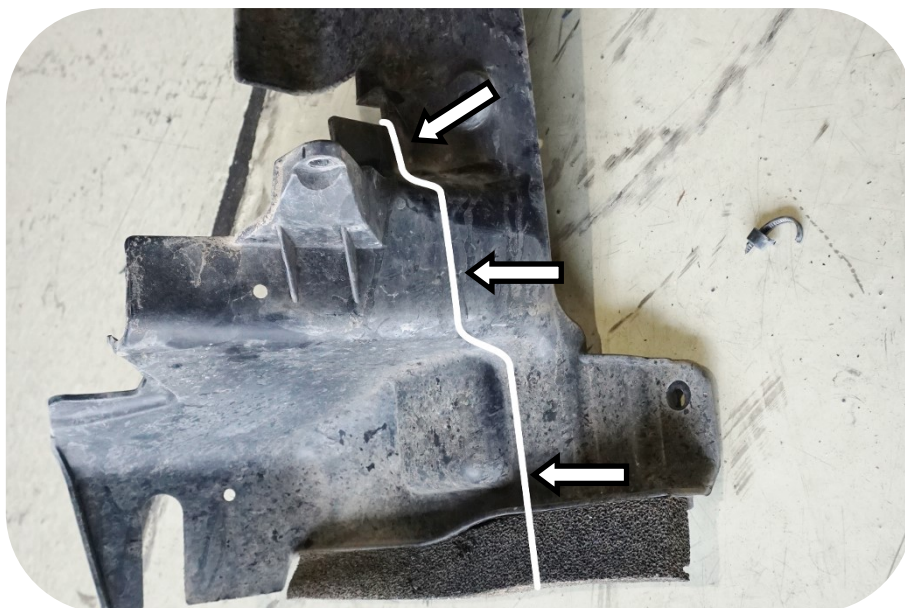
49. Fit the top bumper locating brackets to the trimmed bumper and mark the brackets at the edge of the bumper.
50. Trim the locating brackets and discard the rear sections.



51. Re-fit the bumper locating brackets using the original fasteners.



52. Trim both the upper air guides as shown.
45. Re-fit the upper air guides using the original fasteners.



53. Re-fit the trimmed bumper to the vehicle using the original fasteners.



54. Re-fit the grille and top cover to the vehicle using the original fasteners.



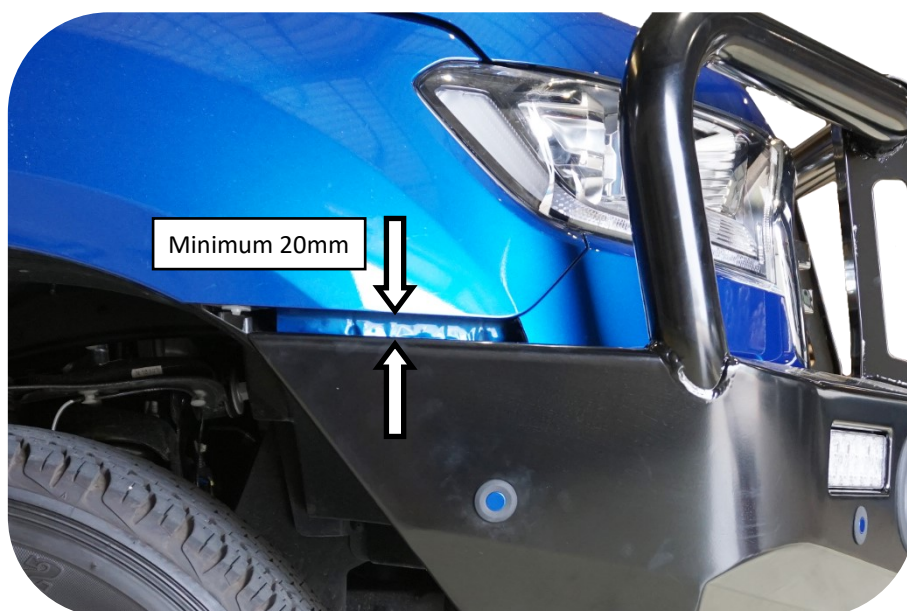
55. Lift the bull bar onto the chassis mount.
56. Secure the bar using six M12 x 40mm hex bolts, six M12 spring and flat washers, and two chassis mount nut plates (item 10).

Do not tighten.

NOTE: Four spacer plates (items 8 & 9) are supplied to allow for horizontal adjustment. Use these in-between the bar and chassis mount to adjust the location of the bar.

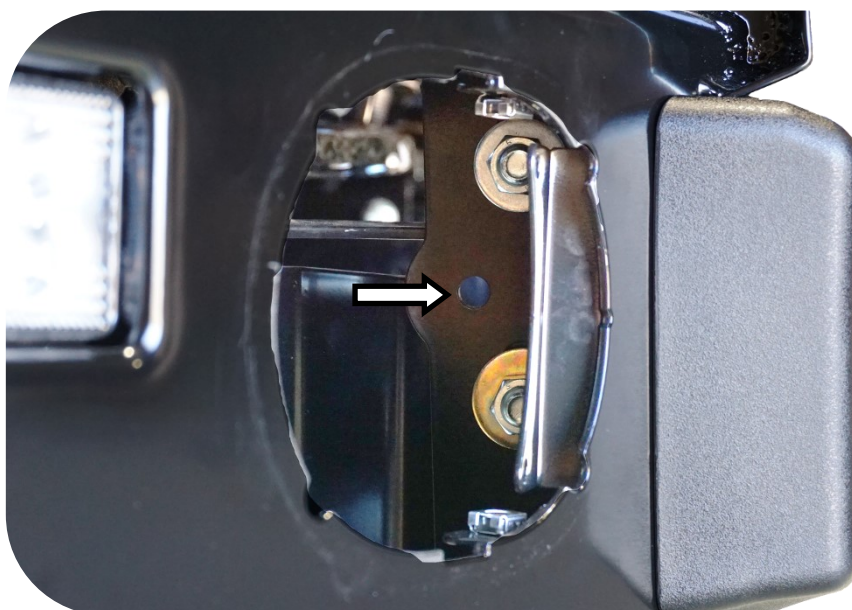


57. Adjust the bar so that there is a minimum 20mm gap between the top of the bar and the underside of the guards and the bar is parallel to the guards.
58. Once satisfied with the positioning tighten the bolts to the correct torque.



59. Once the bar has been aligned and fasteners tightened, drill a 10mm hole through the chassis mount using the hole in the bar mount as a guide.
60. Deburr and treat with rust preventative.

NOTE: If you don't have a right angle drill and short drill bit, remove the fog lights. Re-fit once you have finished step 63.



- 61. Secure with a M10 x 1.25 x 35mm hex bolt, M10 flat washer and M10 flange nut.
- 62. Tighten to the correct torque.
- 63. Repeat for the opposite side.



- 64. Fit the outer stone trays (items 12 & 13) temporarily to the vehicle. Mark a cutting line along the bottom edge of the stone tray onto the inner guards.
- 65. Remove the stone trays.



- 66. Using an air hacksaw or similar, trim the inner guards as marked above.



67. Re-fit the DAB antenna.

NOTE: Use hot melt glue, silicon adhesive or double sided tape. Make sure both surfaces are clean before re-fitting.

68. Where fitted, connect the parking sensor loom, fog lights to the fog light loom and Radar loom to the radar unit. Connect the bull bar combination lamps. Check the operation of all lights.

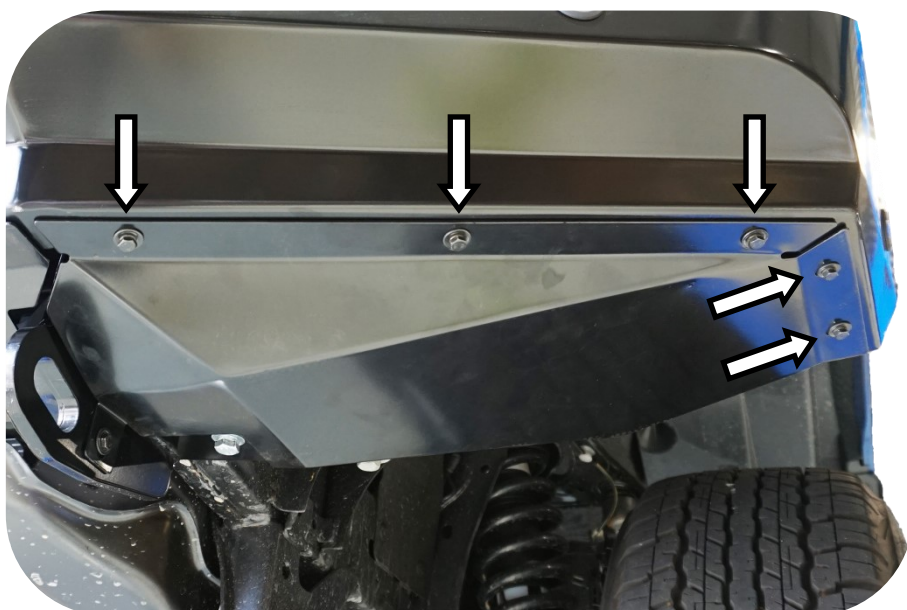


69. Fit the centre stone tray (item 11) using three M6 x 20mm hex bolts, M6 spring and panel washers.

Do not tighten.



70. Fit the outer stone trays (items 12 & 13) with the inner guard behind the rear fold of the stone trays. Secure using 10 x M6 x 20mm hex bolts, M6 spring and panel washers.

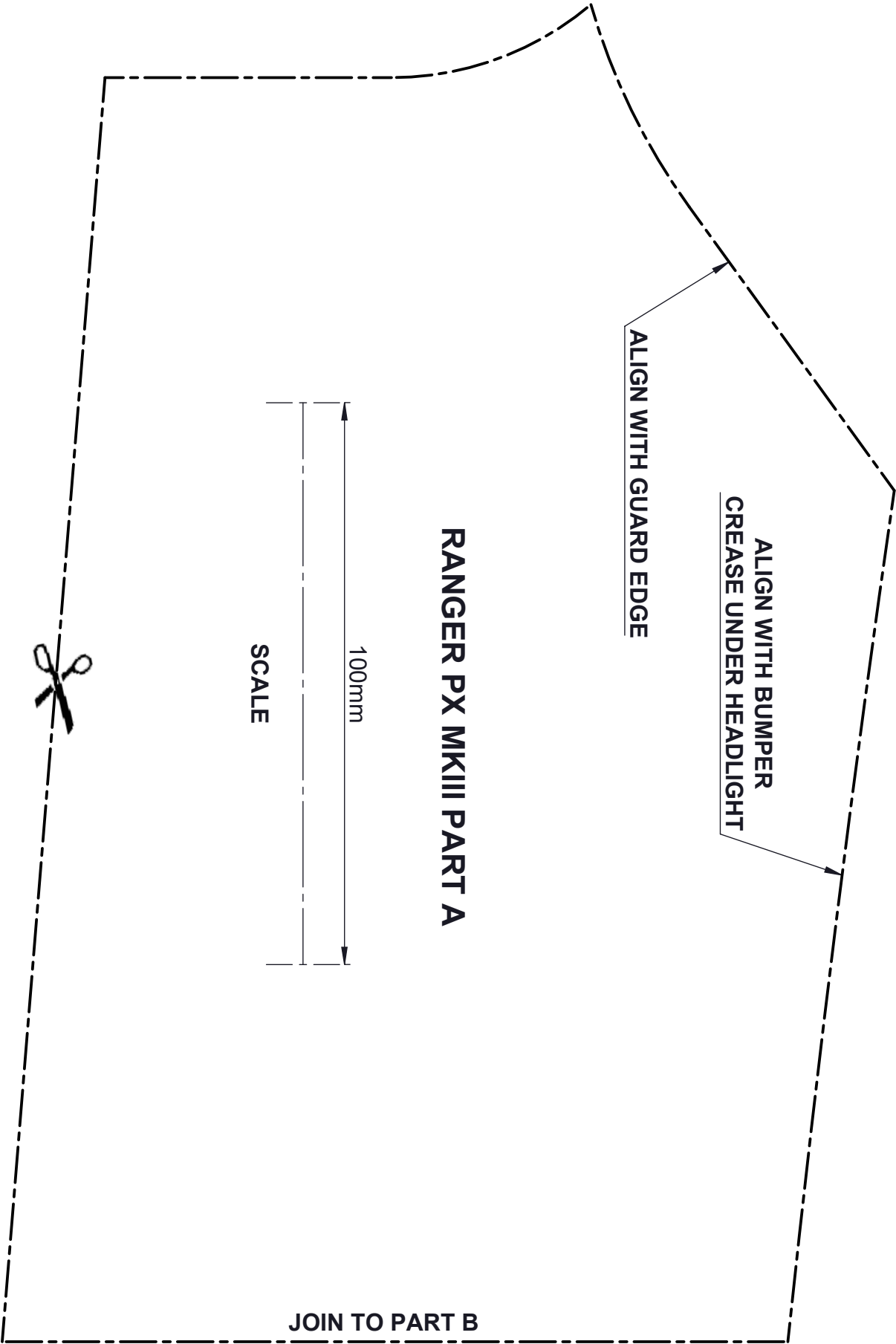


71. Using two M6 x 35mm bolts, four M6 panel washers and two M6 flange nuts, secure the outer and centre stone trays to the chassis mount. Tighten all fasteners to the correct torque.

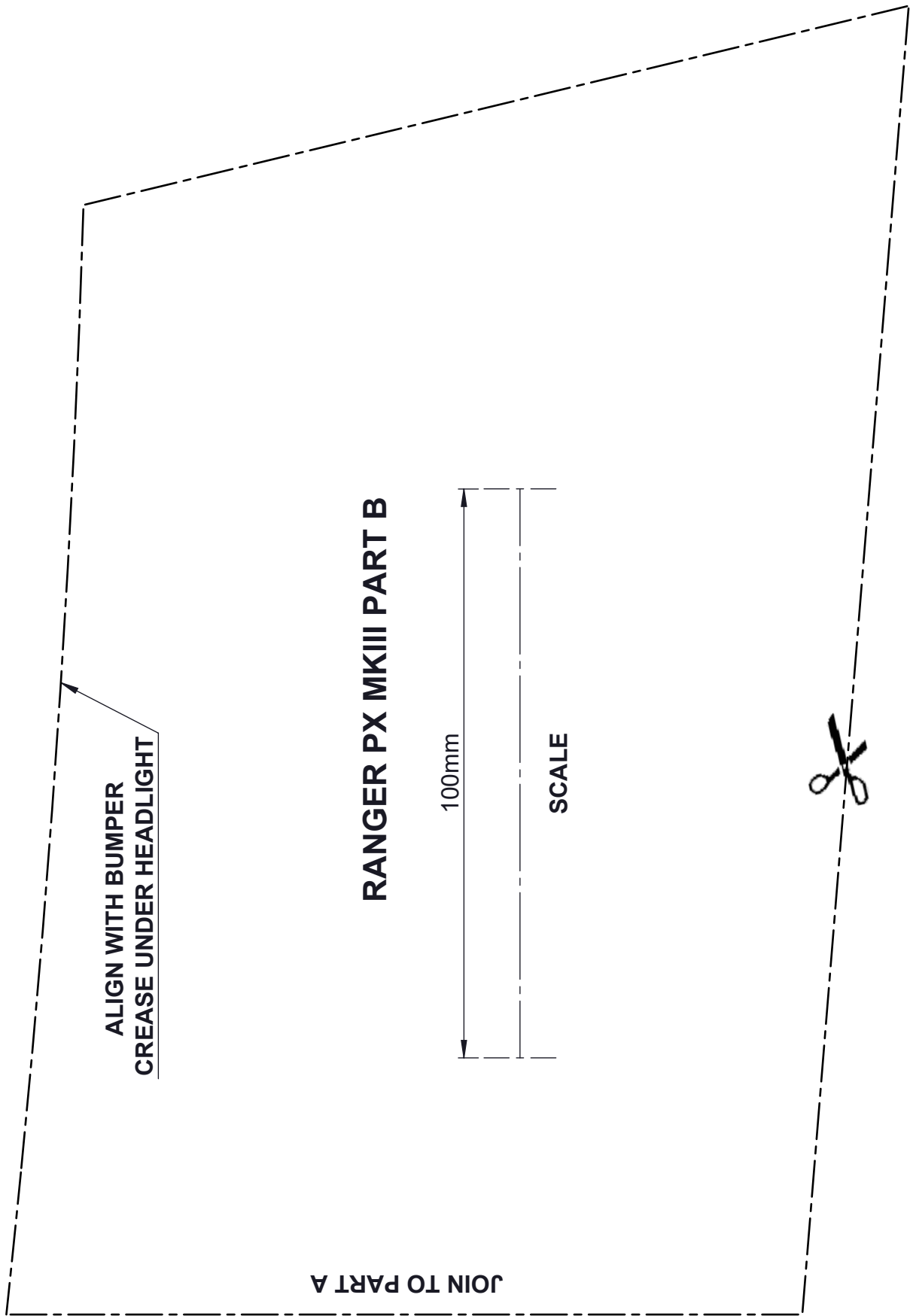


72. If no Tech Pack is fitted to the vehicle, fit the number plate to the top two holes of the bar covering the radar unit hole in the centre of the bar. Secure the number plate with two M6 pan head screws.
73. Check all lights and, where fitted, sensors and Tech Pack functions are working correctly. Ensure all wires have been routed and secured away from any sharp, hot or moving parts.
74. If no parking sensors are being fitted, use the supplied plugs to fill the holes in the bull bar.

BLANK PAGE



BLANK PAGE



BLANK PAGE



CONTACT US

16 COMBARTON STREET

BRENDALE QLD 4500

PH. 07 3204 0311

E. INFO@MAX4X4.COM.AU

WWW.MAX4X4.COM.AU