

HPD

HIGH PERFORMANCE DIESEL

OC-KT-AT-DMAX21

AUTOMATIC TRANSMISSION COOLER KIT

**ISUZU D-MAX / MAZDA BT-50 LATE 2020 ONWARDS
WITH 4JJ3 3.0L ENGINE**



installation guide

Congratulations on buying a HPD product.

HPD products are designed and manufactured in Australia and built to last.



IMPORTANT - READ FIRST

- HPD recommends this kit to be installed by a qualified mechanic. Before you undertake this installation, please read through the installation guide in detail from start to finish. Should you need assistance please call the business of purchase for more information.
- When removing protective coatings, ensure all new edges are deburred, clean any swarf from the area and apply rust preventative to exposed surfaces.
- Do not use this product for any vehicle make or model, other than those specified. Doing so will void the warranty.
- This product or its fixing must not be modified in any way.
- The installation of this product may require the use of specialized tools and/or techniques.
- These instructions are correct as at the publication date. High Performance Diesel cannot be held responsible for the impact of any changes subsequently made by the vehicle manufacturer.
- During installation, it is the duty of the installer to check correct operation/clearances of all components.
- HPD aftermarket products may void OE manufacture warranty. Please check with your warranty provider if you are unsure.
- Check over the kit within the first 1000km to ensure all fixings remain tight, clamps are tensioned and all clearances are still adequate.

DIFFICULTY LEVEL



ESTIMATED FITTING TIME: 3hrs

CONDITIONAL MANUFACTURERS WARRANTY:

For full warranty details see: www.hpdiesel.com.au/terms

HPD products are covered by a 1 year limited warranty from the date of sale to the original purchaser only, covering manufacturing and workmanship exclusively.

Modifying any HPD products will void warranty.

Our products carry a 12 month warranty against manufacturing faults.

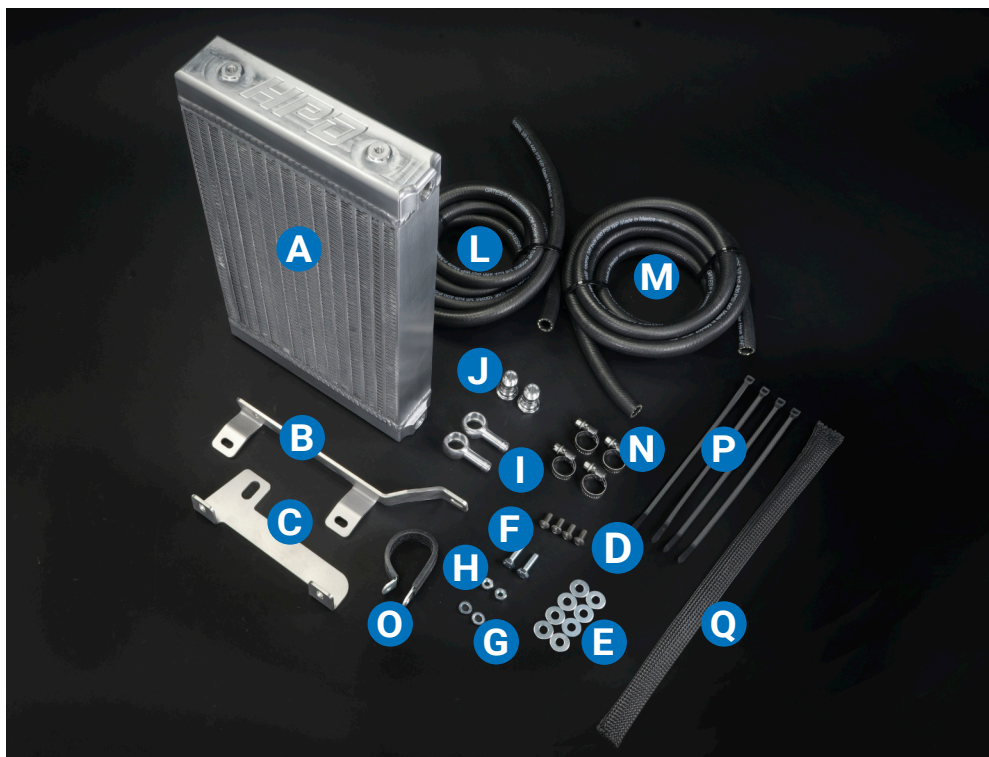
All orders shipped/freighted by us are subject to our returns policy and includes a restocking fee.
No returns are accepted after 30 days.

You must have permission from us before returning any goods.

The buyer is responsible for all freight costs involved with the return.

OC-KT-AT-DMAX21

LATE 2020 ONWARDS 4JJ3 ISUZU DMAX/BT50 AUTOMATIC TRANSMISSION OIL COOLER KIT



PARTS LIST

Please ensure you have received all parts before performing installation

PART No	DESCRIPTION	Qty	PACKED
A	OC-300-200 OIL COOLER 300x200x50	1	
B	OC-MB-DMAX21-1 OIL COOLER UPPER MOUNTING BRACKET	1	
C	OC-MB-DMAX21-2 OIL COOLER LOWER MOUNTING BRACKET	1	
D	M6X12BHS M6 BUTTON HEAD SCREW	4	
E	6MZPW M6 FLAT WASHER	8	
F	6X20M88ZPB M6X20 ZINC PLATED BOLT	2	
G	6X2.5X1.6MSW M6 SPRING WASHER	2	
H	6M8ZPN M6 ZINC PLATED NUT	2	
I	HTB-10 HOSETAIL BANJO. Ø 10MM TAIL	2	
J	HTBB-6J HOSETAIL BANJO BOLT - 6J (9/16UNF)	2	
K	OR-12x2 N70 12MM X 2MM O'RING (ALREADY FITTED TO BANJO BOLTS)	6	
L	RH-10 Ø10 RUBBER HOSE	2.4M	
M	RH-10 Ø10 RUBBER HOSE	2.4M	
N	CL-8-16 8-16 CLAMPS	4	
O	PC-35 RUBBER LINED P CLIP	1	
P	CABLE TIE CABLE TIE 200mm	4	
Q	HP-20 HOSE PROTECTOR 20MM (BRAIDED CABLE SLEEVE)	300mm	

PACKED BY:

INSTALLATION INSTRUCTIONS

Remove the cowling on top of the radiator. This is held in using panel clips that can be popped out with a screwdriver. The air intake will also have to be removed to access the panel clip below the intake.



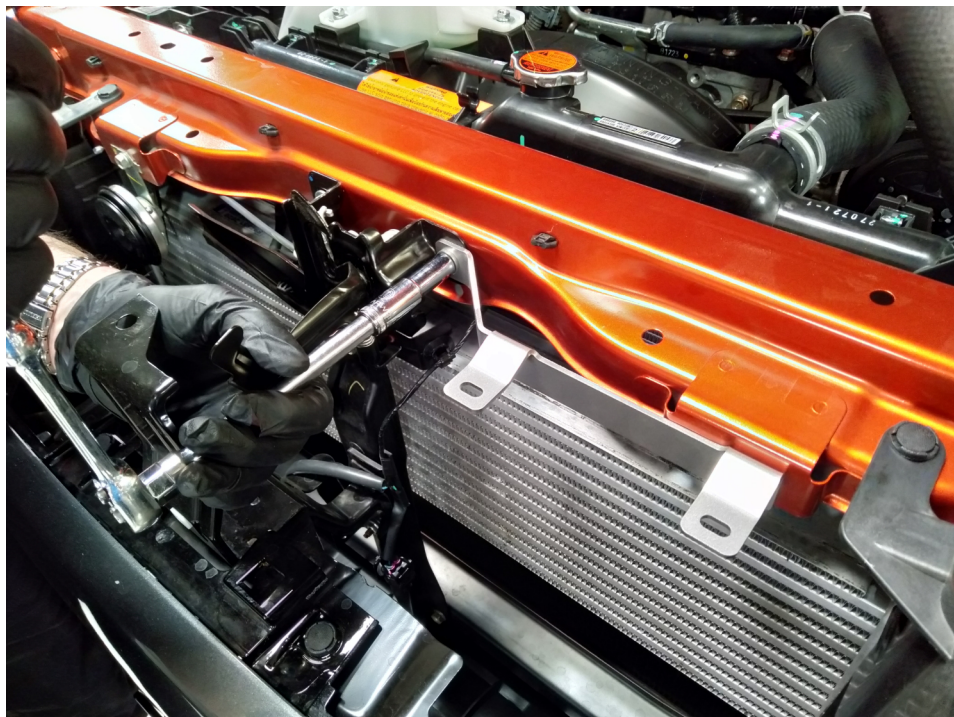
With the top cowling removed from the vehicle, there are some panel clips holding in the grille which need to be removed, as well as a central screw in the grille. The grille can now be lifted up & out of the way.



Remove the bolt holding the horn onto the top LHS radiator support. Next, remove the bolt from the LHS of the bonnet latch support as shown in the picture.



Fit the new supplied upper mounting bracket to the top of the radiator support where the bolt for the bonnet latch and horn were removed using the original bolts, as shown in the picture below.

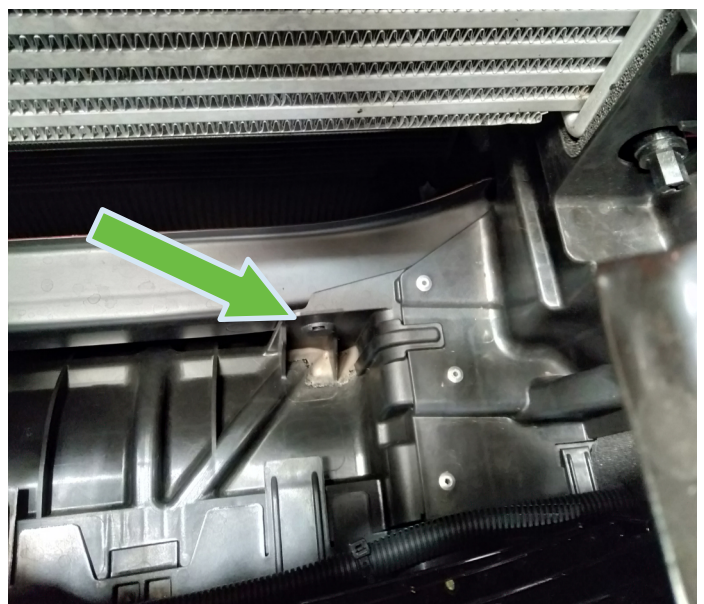


Fit the supplied banjo bolts into the transmission cooler, ensuring there are three o'rings on each bolt. Tighten the banjo bolts with the top fitting pointing straight down, and the bottom fitting pointing backwards as shown in image right.

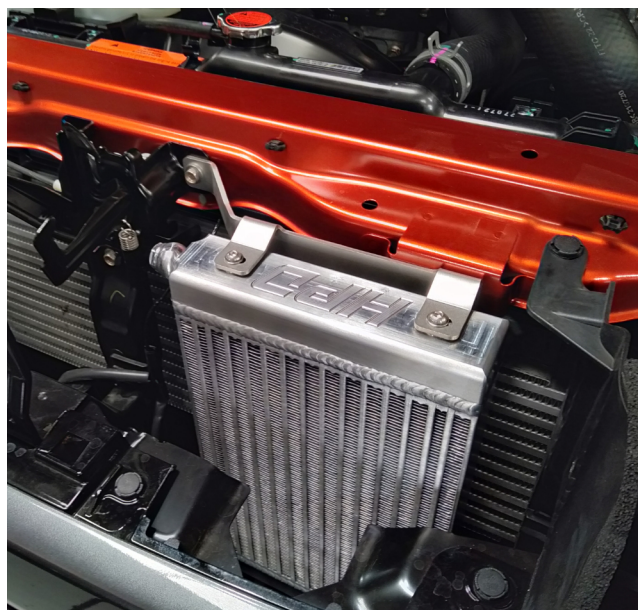
Fit the lower mounting bracket with 2 x M6 button head screws & flat washers & tighten.



Remove the single panel clip from the bottom cowling as indicated by the arrow, as this is where the lower oil cooler mounting bracket will attach.

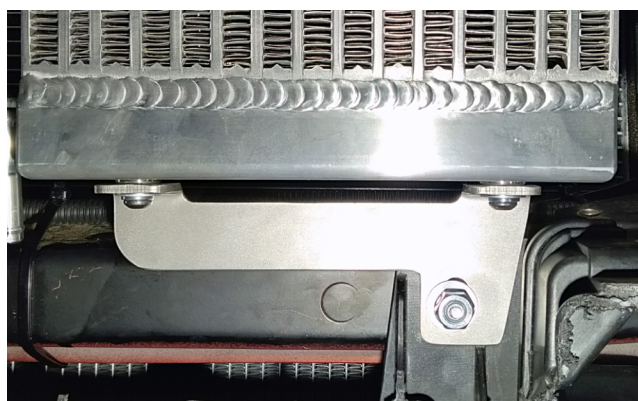


Gently slide the oil cooler assembly into position with the banjo fittings towards the centre of the vehicle, being careful not to damage the unit. Fit the 2 x M6 button head screws & flat washers in place to hold the cooler.



Install the M6x20 bolt & flat washer in the lower mounting bracket from the back, & secure with flat & spring washers & nut, and tighten.

Note: the mounting bracket will fit over the front of the plastic cowling.



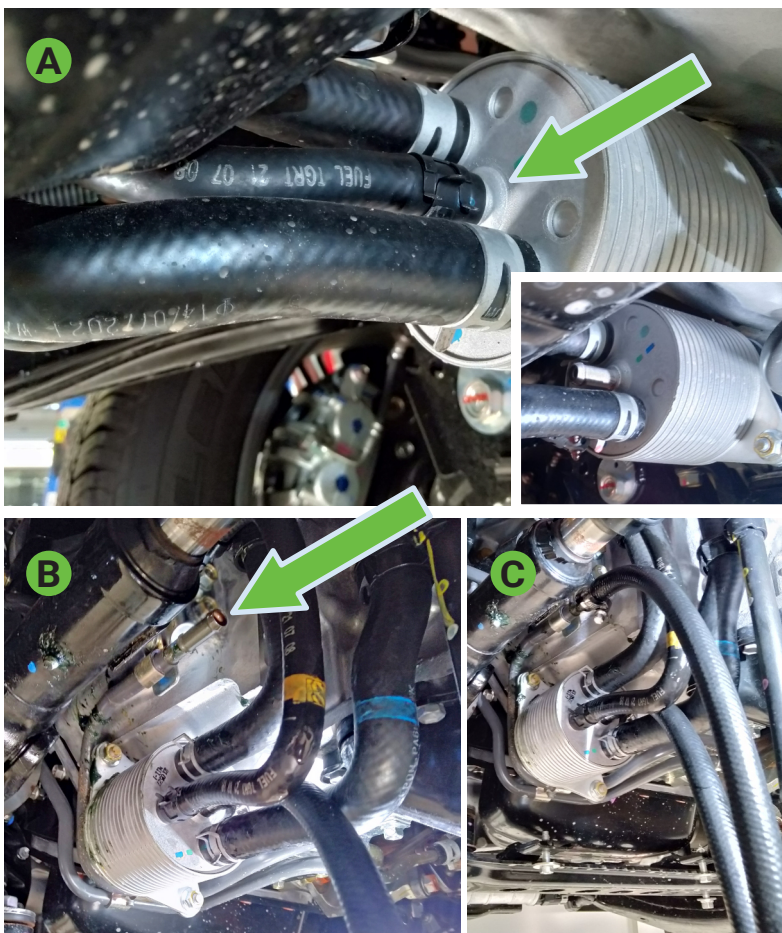
The horn bracket locating tabs will need to be bent flat, then fitted under the left mounting screw as shown. Once mounted, bend the horn bracket downwards to allow clearance for the grille, by gently pushing down on the horn. Ensure all screws are tight, & reconnect horn wiring.



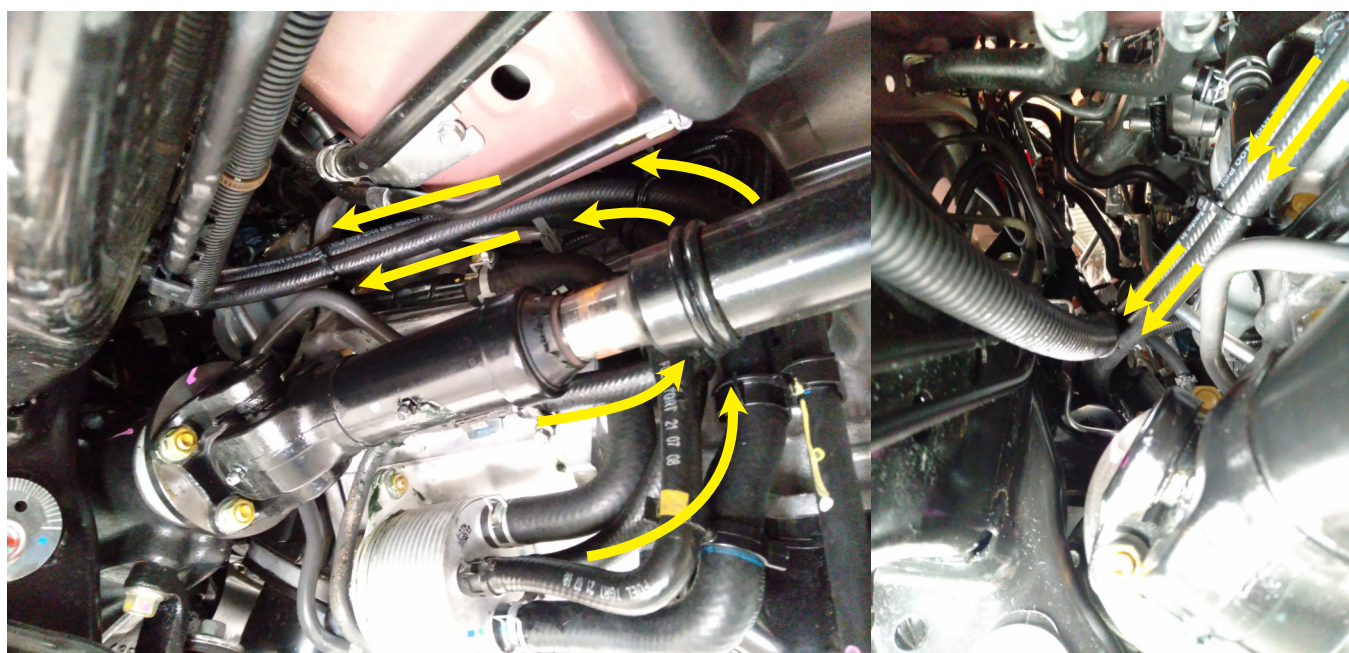
Remove any bash plates and underbody protection to gain access to the transmission

Locate the factory heat exchanger found on the passenger side of the transmission. You will need to remove the middle hose from the heat exchanger unit (indicated in image A), then follow the hose upwards and also remove the other end from the lower formed metal pipe (indicated in image B).

Once this line has been removed, use one length of supplied hose and fit to where the original line was on the heat exchanger, and the second supplied length of hose onto the metal pipe (visible on image C). Secure both hoses with supplied hose clamps.



Route new hoses from the factory heat exchanger to the front of the vehicle where the new transmission cooler is located



The hoses can be run below the LHS engine mount, then secured to the wiring harness with a cable tie as shown in the image right



Fit the supplied P-Clip with M6 bolt, washers & nut, to the front of the chassis as indicated on image right. Keep hoses clear of the front swaybar.

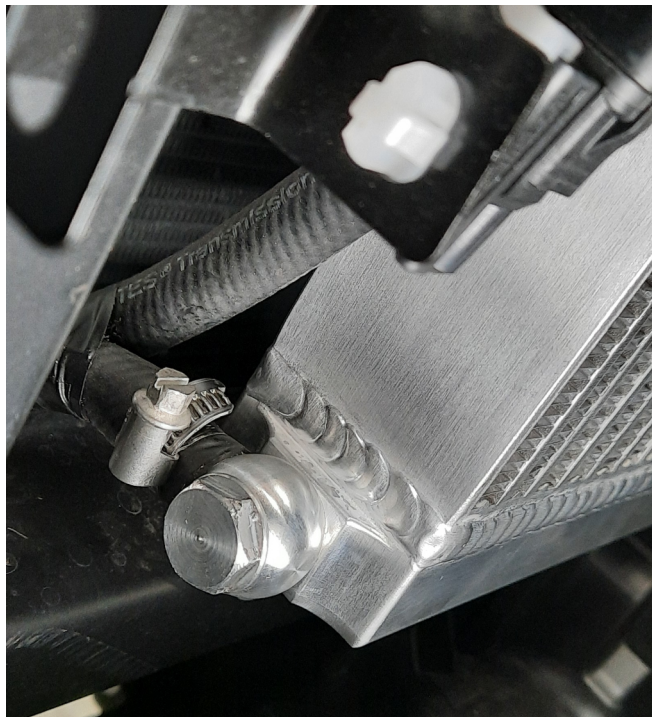
Run the hoses up behind the lower radiator support bar towards the transmission cooler fittings. It's not critical which hose connects to which fitting. Trim the hoses to length as necessary.



Lower the hoses down again, and then the protective sleeve can be fitted over the 2 hoses and secured with electrical tape, to prevent rubbing on the radiator support panel.



Fit the hoses to the transmission cooler & secure with hose clamps as shown.



Once all components are installed and secure check for leaks and rattles by starting the vehicle and go over the whole installation process. It will be necessary to either fill up the transmission with more oil due to the extra volume of the oil cooler unit, or depending on kms, perform a full transmission service. Follow the manufacturers specifications and procedures to ensure the process is performed correctly.

Check the system again for leaks and rattles, and make sure nothing is rubbing anywhere.

Refit bash plates & underbody protection.

Refit grille & cowling above radiator in reverse order of removal. Please note, there will be one panel clip left over, from where the lower trans cooler mount is now bolted in place.

NOTE: we suggest that you now perform a transmission service to replace the transmission fluid with fresh fluid. Ensure transmission fluid levels are correct before driving the vehicle.

THANKS FOR BUYING A HPD TRANSCOOLER KIT!



By buying HPD products, you're supporting Australian jobs within our company as well as our vibrant local business community.

HPD products are high quality and made to last, here's why:

- HPD Transcoolers use Bar and Plate cores. For tackling hours of rough tracks and corrugated roads, Tube and Fin cores simply don't compare when it comes to handling violent movement, constant vibration or impact from road debris. Our Transcooler kits also feature billet alloy fittings
- Mounting brackets are lasercut from 3mm thick, 304 grade stainless steel to resist rust and corrosion.
- Extra fittings are machined in-house from solid billet alloy
- Kits are supplied with everything you need for fitting as well as detailed instructions.

HPD

HIGH PERFORMANCE DIESEL

HPD is Australia's leading manufacturer of performance upgrade products for turbo diesel vehicles.

Range includes:

» CATCH CANS

» INTERCOOLER KITS

» TURBOCHARGER KITS

» TRANSMISSION COOLERS

» PERFORMANCE UPGRADES



DESIGNED &
MANUFACTURED
IN AUSTRALIA

For further sale & support contact HPD

☎ 08 8299 0320 ✉ sales@hpdiesel.com.au

🌐 hpdiesel.com.au