

Provent Kit for Isuzu D-Max (Feb2017) 3.0L Turbo Diesel 4Cyl. DOHC 4JJI-TCX

KIT No: OS-PROV-25



Fitting Instructions for Provent 200 Kit

- STEP 1:** Ensure Engine is OFF and cool enough to work on.
- STEP 2:** Remove Plastic Engine Cover by pulling up (img.1).
- STEP 3:** Remove the Black bracket holding the sensor switch for the DPF
Undo bolt holding the switch to the bracket (img.2 & 3).
- STEP 4:** Swivel Provent's position within it's Bracket (4 clicks anti-clockwise)
Fit Clear Drain Hose to the Lower Outlet of the Provent 200 unit
and then secure with hose clamp (img.4).
- STEP 5:** Fit Provent 200 unit to the Bracket
and secure with supplied bolts & washers (img.5 / page2).



Step 2 / Img 1:



Step 3 / Img 2:



Step 4 / Img 3:



Step 6 / Img 4:

Provent Kit for Isuzu D-Max (Feb2017) 3.0L Turbo Diesel 4Cyl. DOHC 4JJI-TCX

KIT No: OS-PROV-25

STEP 7: Place and fit the Provent bracket within the area where the OEM bracket had been. Take care feeding the drain hose to the bottom of the engine bay, down the side of the chassis rail and through the wheel arch. Cut the drain hose to the desired length, fit supplied drain tap and cable tie where necessary (img.5).

STEP 8: Using the bolt from the original OEM bracket, fix the DPF sensor switch to the Provent bracket (img.6).

STEP 9: Remove the OEM 'S-shaped' hose end connected to the Top of the crank case.

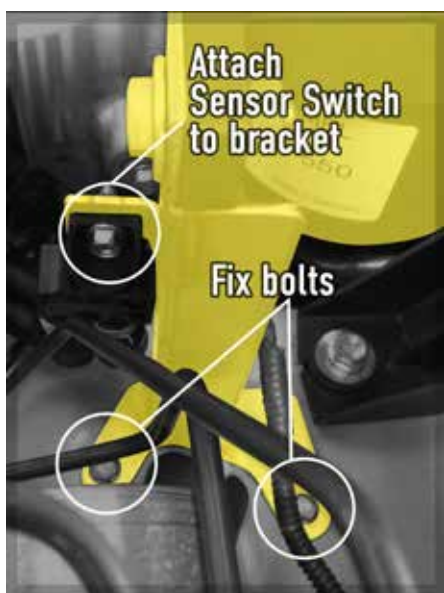
STEP 10: First fit the supplied Lower hose (with silicone 90 degree bend) to the fitting just before the Turbo, then connect the other end to the Provent unit's Lower outlet. Secure with supplied hose clamps.

STEP 11: Fit the supplied Top hose (straight) to the Provent unit's Top inlet, then join the OEM 'S-shaped' hose connected to the Crankcase outlet (img.7). Secure with supplied hose clamps.

STEP 12: Cable tie hoses to avoid rubbing where necessary, then replace the plastic engine cover (img.8).



Step 7 / Img 5:



Step 8 / Img 6:



Step 9 / Img 7:



Step 10 / Img 8: