

Provent Kit for Mitsubishi Pajero (from late 2016) NX 3.2L Turbo Diesel 4Cyl. DOHC

KIT No: OS-PROV-27



Fitting Instructions for Provent 200 Kit

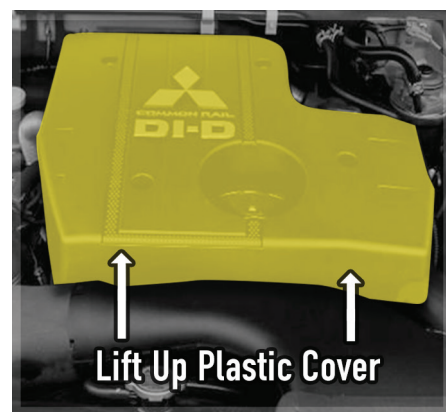
STEP 1: Ensure Engine is OFF and cool enough to work on.

STEP 2: Remove Plastic Engine Cover by pulling up (img.1).

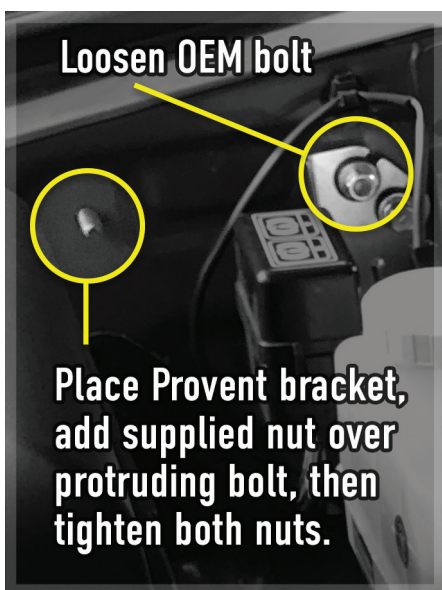
STEP 3: Loosen OEM bolt, slide Provent bracket behind plate, placing over protruding bolt, add supplied nut then tighten both nuts (img.2)

STEP 4: Before attaching Provent to bracket, ensure position is correct (img.3)
Fit Clear Drain Hose to the Lower Outlet of the Provent 200 unit and then secure with hose clamp (img.3)

STEP 5: Fit Provent to Bracket, with supplied bolts, nuts & washers (img.4)



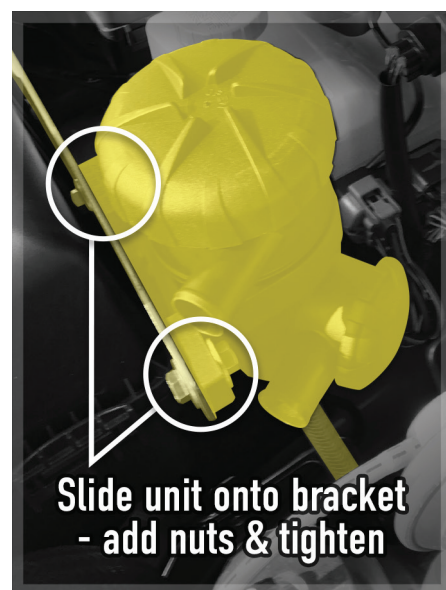
Step 2 / Img 1:



Step 3 / Img 2:



Step 4 / Img 3:



Step 5 / Img 4:

Provent Kit for Mitsubishi Pajero (from late 2016) NX 3.2L Turbo Diesel 4Cyl. DOHC

KIT No: OS-PROV-27

STEP 7: Remove existing OEM hose from engine (img.5).

STEP 8: Attach Provent's Lower Hose (LH) to the OEM hose (air intake) removed from the crank case. Secure with supplied hose clamps (img.6).

STEP 9: Attach the Provent's Upper Hose (UP) to the crank case inlet (img.7). Secure with supplied hose clamps.

STEP 10: Cable tie hoses to avoid rubbing where necessary.

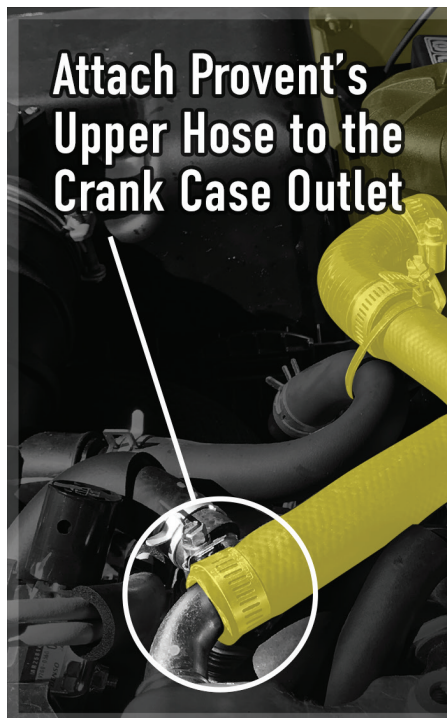
STEP II: Replace the plastic engine cover. Job done !



Step 7 / Img 5:



Step 8 / Img 6:



Step 9 / Img 7:



Step 10 / Img 8: