



## ISUZU DMAX RG 2021 MY ONWARDS REAR BAR

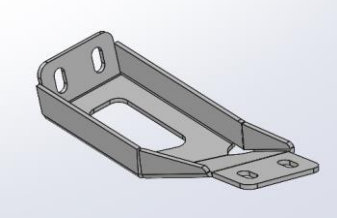
### **IMPORTANT! – READ BEFORE INSTALLATION**

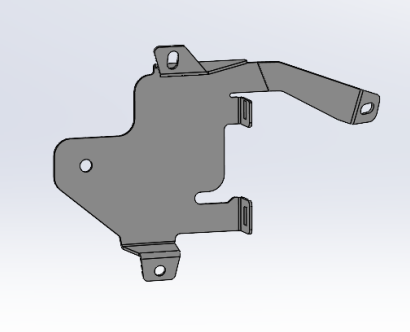
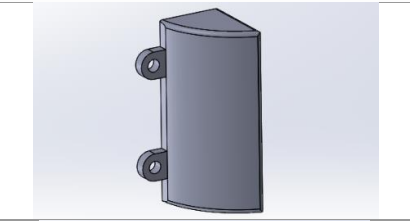
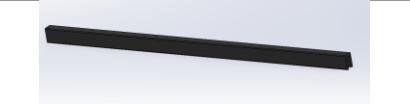
- When installed in accordance with these instructions, the rear protection tow bar maintains the factory tow rating of your vehicle.
- This product must be installed exactly as per these instructions using only hardware supplied.
- Take a few moments to read instructions thoroughly before beginning work.
- In the event of damage to any bar component please contact OFFROAD ANIMAL to arrange repair/replacement of components.
- Do not use this product for any vehicle make or model other than that specified on these instructions.
- Do not remove labels from this product.
- This product and its fixings must not be modified in any way unless stated in these fitting instructions.
- The installation of this product is recommended for trained personnel.
- These instructions are correct at time of publication. OFFROAD ANIMAL cannot be held responsible for the impact of any changes subsequently made by the vehicle manufacturer. If you find something has changed please contact us to let us know!
- During installation it is the duty of the installer to check correct operation/clearances of all components.
- If Instructions are to be printed for reference in the workshop, it is recommended that they are printed in colour, for best legibility.

## PARTS LISTING

**IMPORTANT:** Check all parts are present before beginning work! Contact OFFROAD ANIMAL if something is missing.

### Main Parts – In the Box

Qty	Part Number	Description	Image
<b>1</b>	RB-IDM-RG-21-ASM1	ISUZU DMAX RG 21+REAR BAR WELDMENT	
<b>1</b>	B-0518R	Isuzu DMAX 2021+ Rear Bar - Wing Support Bracket	
<b>1</b>	B-0518L	Isuzu DMAX 2021+ Rear Bar - Wing Support Bracket	
<b>1</b>	B-0544R	DMAX 21+ Rear Radar Cover Panel	
<b>1</b>	B-0544L	DMAX 21+ Rear Radar Cover Panel	
<b>1</b>	B-0576R	Isuzu DMAX 2021+ Rear Bar - Radar Bracket	

<p><b>1</b></p>	<p>B-0576L</p>	<p>Isuzu DMAX 2021+ Rear Bar - Radar Bracket</p>	
<p><b>2</b></p>	<p>BR25B</p>	<p>LED NUMBER PLATE LIGHT</p>	
<p><b>2</b></p>	<p>PW-P-14x9-800</p>	<p>Pinch Weld - Plain Non Seal 800mm</p>	

**Small Parts – Contained in Small Parts Kit Bag**

Qty	Part Number	Description
<b>2</b>	RB-IDM-RG-21-ASM2	DMAX / BT50 21+ Rear Bar Nut Plate Assy
<b>10</b>	M12 FW LHD	M12 FW Large Heavy Duty
<b>6</b>	M12X30X1.25	Bolt Hex, M12X30x1.25, GR8.8 ZP
<b>4</b>	M12X30	Bolt Hex, M12X30x1.75, GR8.8 ZP
<b>8</b>	M10 Flat Washer	M10 FW
<b>4</b>	M10X20 BHCS	SCREW, BUTTON HEAD CAP, M10X20X1.5 GR12.9 ZP
<b>8</b>	M10 FLANGE NUT	Flange Nut, M10x1.5 G8.8 ZP
<b>4</b>	M10 x 30	Bolt Hex, M10X30x[1.5], GR8.8 ZP
<b>12</b>	M6 FLANGE NUT	Flange Nut, M6x1 G8.8 ZP
<b>12</b>	M6 FLAT WASHER BLACK ZINC	M6 FW BLACK ZP
<b>12</b>	M6x16 BHCS BLACK ZINC	SCREW, BUTTON HEAD CAP, M6X16X1 GR12.9 BLACK ZP
<b>1</b>	M10 NUT	Hex Nut, M10x1.5 G8.8 ZP
<b>1</b>	M10 x 25	Bolt Hex, M10X25x[1.5], GR8.8 ZP
<b>4</b>	M5 FLANGE NUT	Flange Nut, M5x0.8 G8.8 ZP
<b>4</b>	M5X15 PAN	SCREW, PAN HEAD PHILLIPS, M5X15X0.8 GR4.6 ZP

## TOOLS REQUIRED

The following tools will be required to install the product.

<b>Hand Tools</b>	<b>Power Tools</b>	<b>Workshop Equipment</b>
Metric Socket Set 8-19mm Metric Spanner Set 8-19mm Hex (Allen) Key Set 4-8mm Trim Tool Utility Knife Side Cutters Wire Strippers	Soldering Iron Heat Gun  Electric / Air Impact Driver (Optional but speeds up fitting process)  Air Hacksaw or Reciprocating Saw	Lift Trolley Solder Heat Shrink Marker

# WORKSHOP SAFETY

It is the responsibility of the installer to always complete works in a safe manner. Make sure the following safety equipment is available and precautions are observed whilst fitting this product.

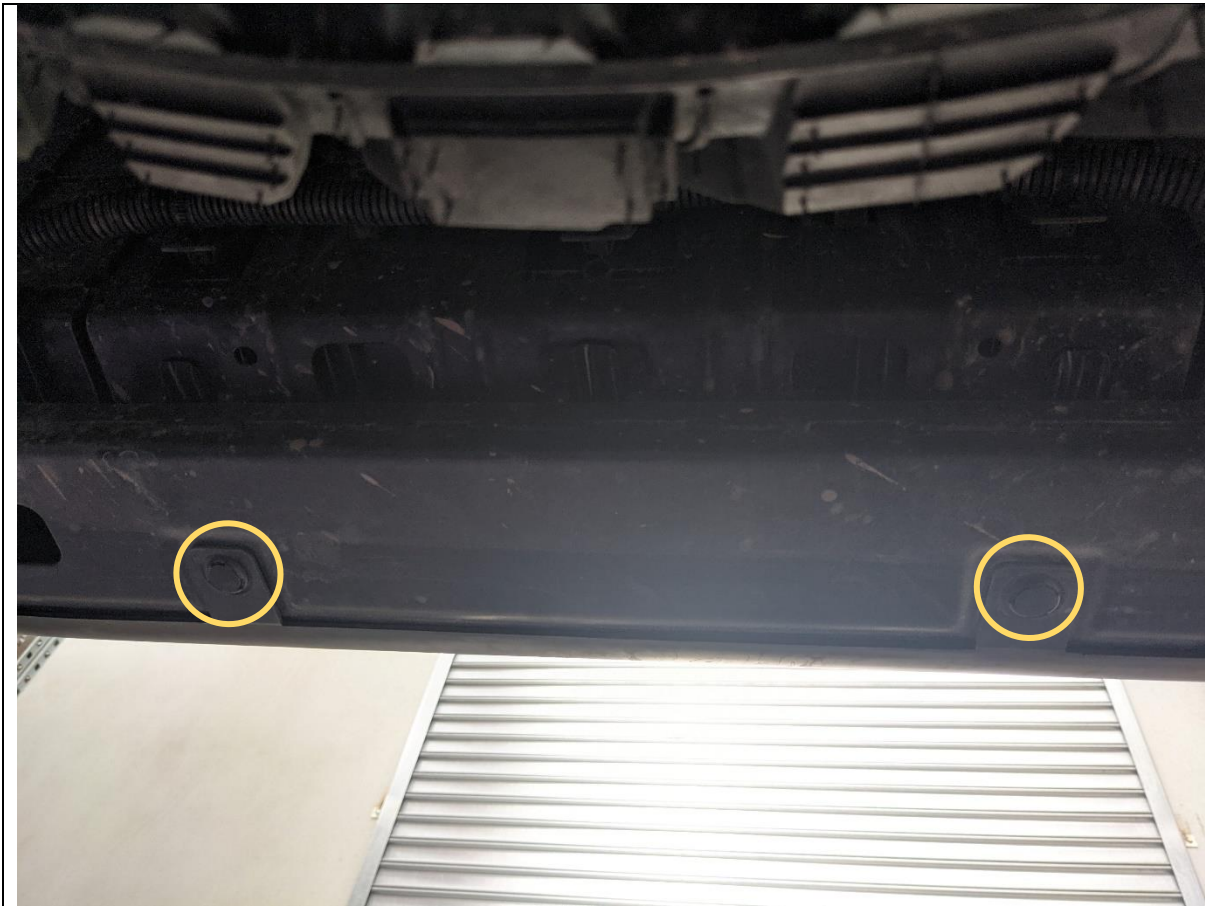
<p>Hearing Protection</p> 	<p>Always wear ear protection when using power tools.</p>
<p>Eye Protection</p> 	<p>Ensure eye protection is always worn when cutting or drilling.</p>
<p>Manual Handling</p> 	<p>Do not attempt to lift bar assemblies or rock sliders on your own.</p> <p>Always use two people to lift or use mechanical Lifting aid such as hydraulic lifting trolley.</p>
<p>Vehicle Support</p> 	<p>Always ensure vehicle is properly supported when working on it. Do not attempt to fit products whilst suspension work is being carried out. Do not work under a vehicle supported only by a jack.</p>



1. Before beginning work on the bumper, remove factory towbar if fitted. The vehicle used for this example did not have towbar fitted.
2. Remove the 2x Plastic clips from underside corner of rear bumper using trim tool. Complete for both sides.
3. X-Terrain models, remove fasteners securing the rear lower trim pieces, then remove trim pieces by peeling / cutting double side tape securing them to the bumper and tub.

**TOOLS REQUIRED**  
Trim Tool

**FASTENERS**



4. Remove the 2x Plastic clips from underside center of rear bumper using trim tool.

**TOOLS REQUIRED**

**Trim Tool**

**FASTENERS**



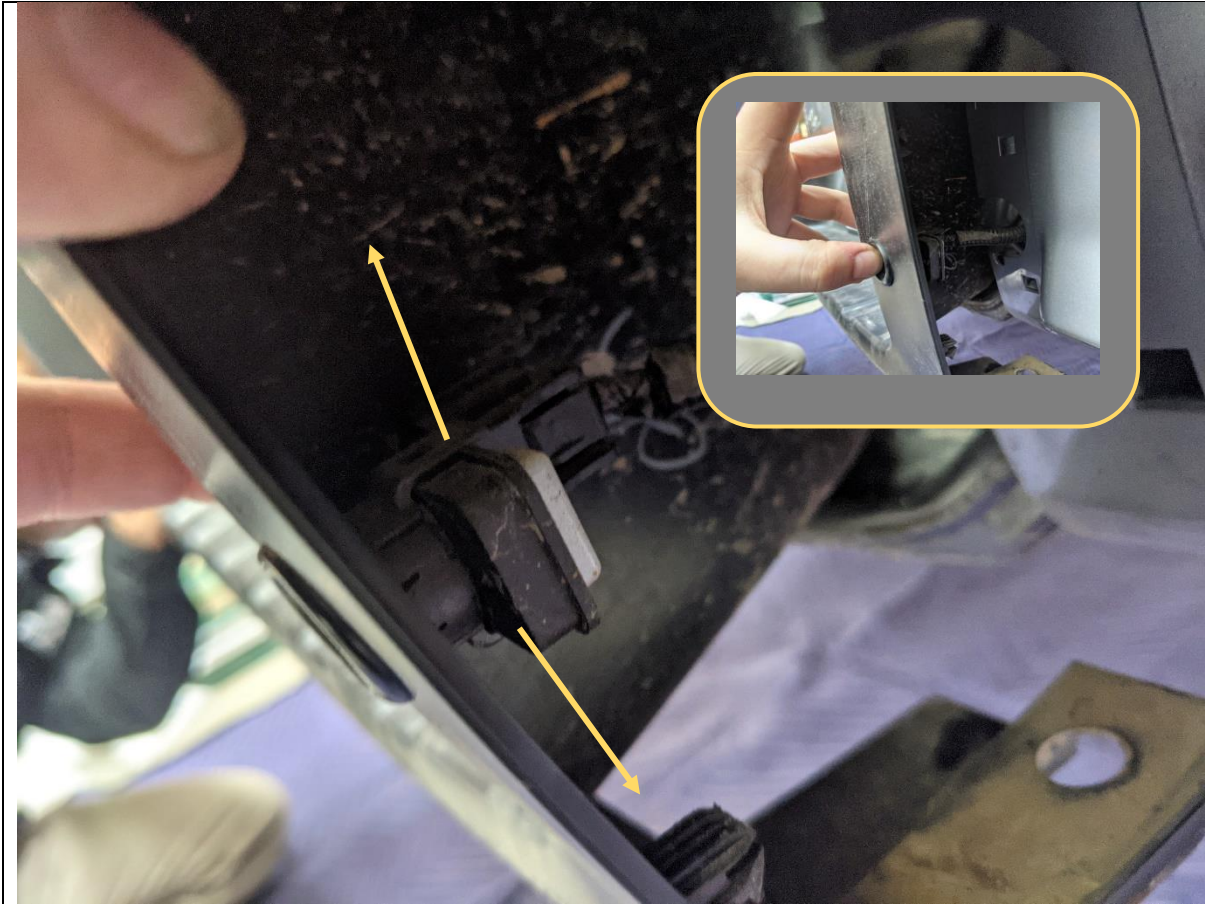


5. Using trim tool pry away black plastic section of rear bumper to unseat it from the clips securing it to the colored outer sections.
6. Pull the black center section partly away from the vehicle as shown.

**TOOLS REQUIRED**

**Trim Tool**

**FASTENERS**



7. Remove the sensors from the housings in the center section loosened. Pry open the two retaining tabs holding the sensor in the housing then push the sensor through the bumper.

**TOOLS REQUIRED**

**FASTENERS**



8. Remove the 3x Plastic clips securing the coloured outer bumper to the metal bumper support rail, using a trim tool

**TOOLS REQUIRED**

**Trim Tool**

**FASTENERS**





9. Pull off the outer bumper section, starting from the bottom corner as shown.

**TOOLS REQUIRED**

**FASTENERS**



10. Remove the sensors from the housings in the outer bumper section using same technique as before, Pry open the retaining tabs, then push sensor through.

**TOOLS REQUIRED**

**FASTENERS**



- 11. Disconnect the radar sensor wiring harness from the sensors at the connector.
- 12. Complete on both sides of vehicle.

**TOOLS REQUIRED**

**FASTENERS**





13. Disconnect the main rear bar wiring harness from the vehicle at the connector located under the tub.
14. Remove all the Hex head bolts that secure the metal bumper beam to the tub, except the bolts on with the keyhole slots (Blue Circle)
15. Loosen the 2x Bolts with the keyhole slots (Blue Circle).

**TOOLS REQUIRED**

**Socket / Spanner**

**FASTENERS**



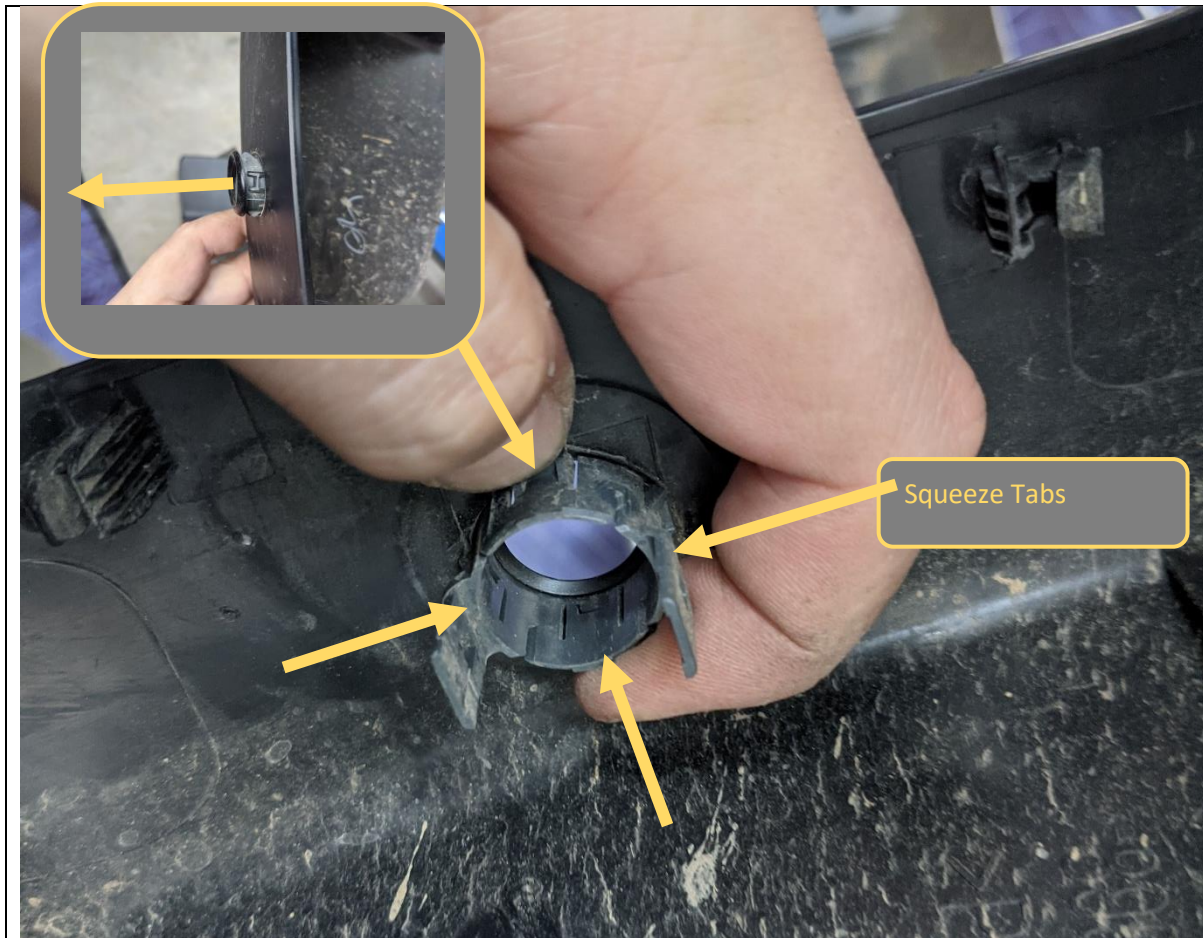
- 16. Lift and remove the metal bumper beam from the vehicle.
- 17. Remove the remaining hex bolts from the back of the tub.

**TOOLS REQUIRED**

**Socket / Spanner**

**FASTENERS**





- 18. Remove parking sensor housings, by squeezing the retaining tabs whilst pushing the housing forward through to the outside of the bumper.
- 19. Repeat for all sensors in the bumper.
- 20. Remove Bulbs from Number plate lamps
- 21. Remove number plate from original rear bar.

**TOOLS REQUIRED**

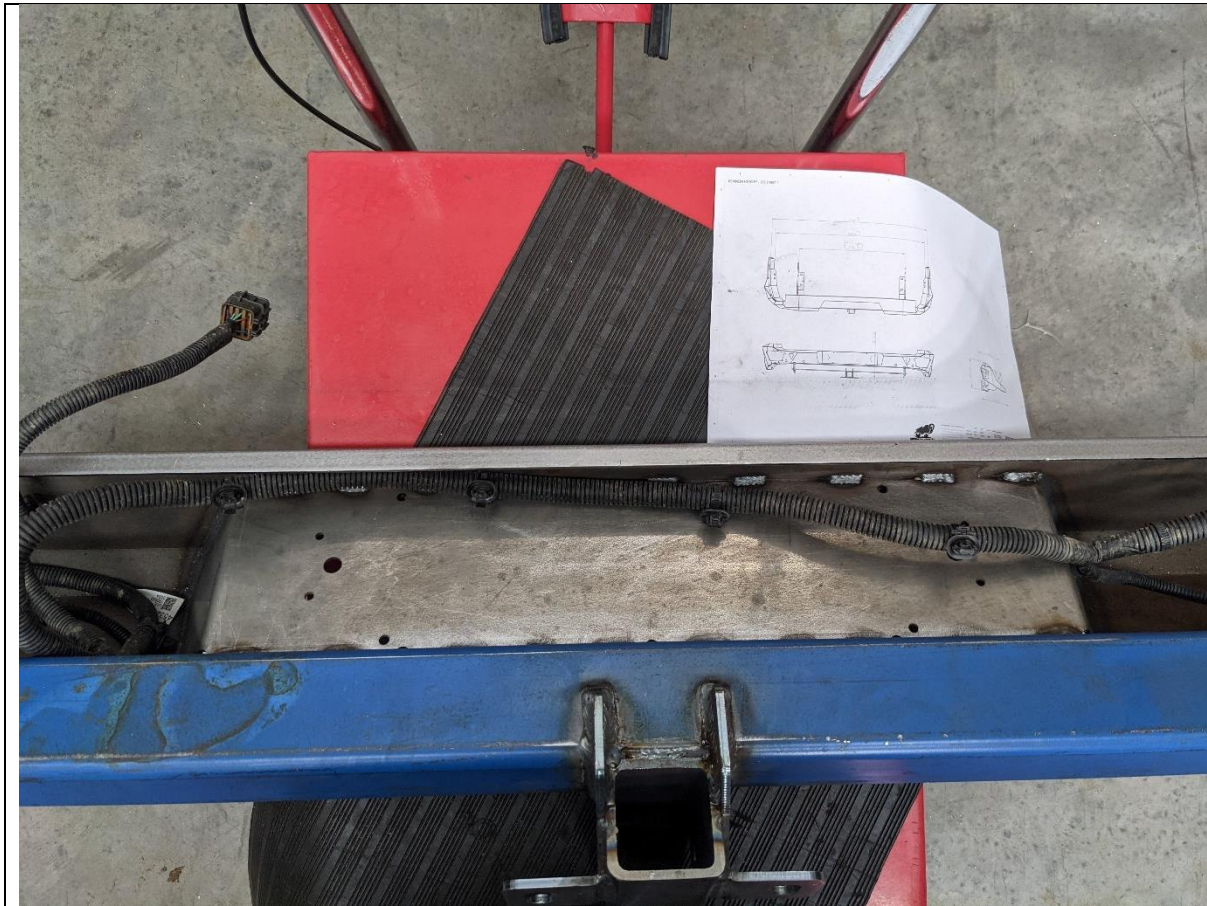
**FASTENERS**



22. Remove the main rear bar loom from the metal bumper beam, by unclipping harness connections with the trim tool.

**TOOLS REQUIRED**  
Trim Tool

**FASTENERS**



23. Fit the harness to the rear bar, routing the cables through the side arms so that the sensor wiring positions are in the correct locations. Ensure the correct orientation of the harness connectors is maintained.

**TOOLS REQUIRED**

**FASTENERS**





24. Fit the number plate lamps to the rear bar, by first feeding the cable the bar, then securing with screws and nuts supplied in the lamp box.
25. Cut off lamp holders from the factory wiring. (**Note** this is located on the tub under the tailgate, not in the bumper loom)
26. Solder to new LED number plate lamp cables. Use heat shrink or electrical tape to insulate solder connections.
27. Complete for both sides of vehicle.

**TOOLS REQUIRED**

- Soldering Iron
- Solder
- Heat Shrink / Gun
- Electrical Tape
- Side cutters
- Wire strippers

**FASTENERS**

- Screws supplied with Lights



28. Install sensors in housings by inserting into housing from rear of bar and pushing until sensors housings sit flush with the bar.

29. Complete for all sensor locations on rear bar.

**TOOLS REQUIRED**

**FASTENERS**



30. Install sensors in housings by inserting into housing from rear of bar and pushing until audible “Click” is heard.

If the sensor will not go in all the way and click, the tabs on the sensor housing will need to be slightly shaved down with a sharp utility knife to create required clearance. Remove the housing from the bar to complete this if required.

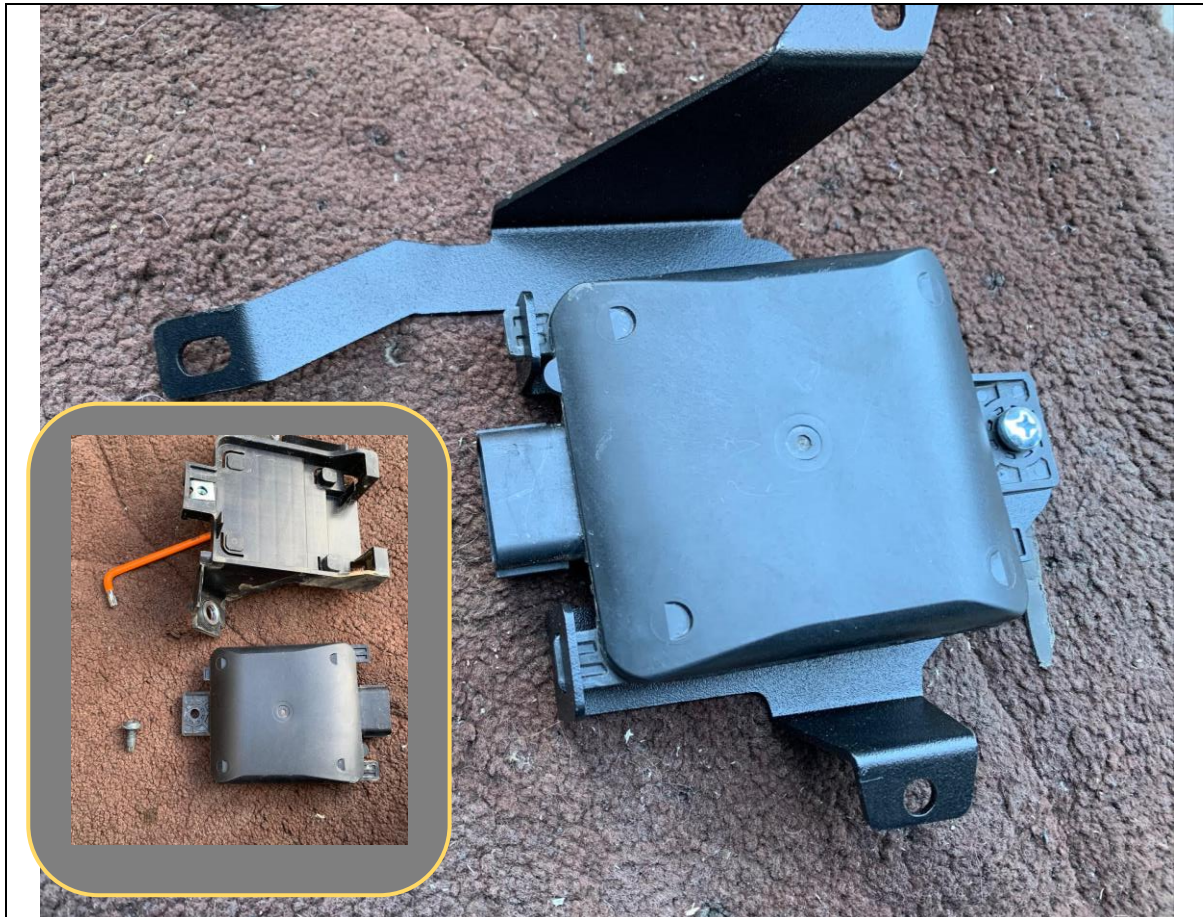
31. Plug in loom to sensors once seated.

32. Complete for both all sensors in bar.

**TOOLS REQUIRED**

**FASTENERS**





33. Remove rear radar sensors, in their brackets from the tub, by removing Hex screws holding them in place.
34. Remove the rear radar sensor from the plastic bracket by removing the TORX screw holding it in place.
35. Complete for both sides of vehicle.
36. Re fit the radar sensors to the supplied rear bar radar bracket using the supplied M5 Fastener.

**TOOLS REQUIRED**  
Torx Key  
Phillips Head screwdriver

**FASTENERS**  
M5x15 Pan head  
M5 Flange Nut



- 37. Fit the radar sensor bracket, and plastic cover panel to the corner window of the bar and secure with M6x16 Button head, Flat washers, and Flange Nuts.
- 38. The radar bracket sits behind the plastic cover and shares the same fasteners.
- 39. Plug in radar harness connector to radar sensor.
- 40. Complete for both sides of vehicle.

**TOOLS REQUIRED**  
4mm Hex key

**FASTENERS**  
6xM6x16 Black BHCS  
6x M6 Black Washers  
6x M6 Flange Nuts

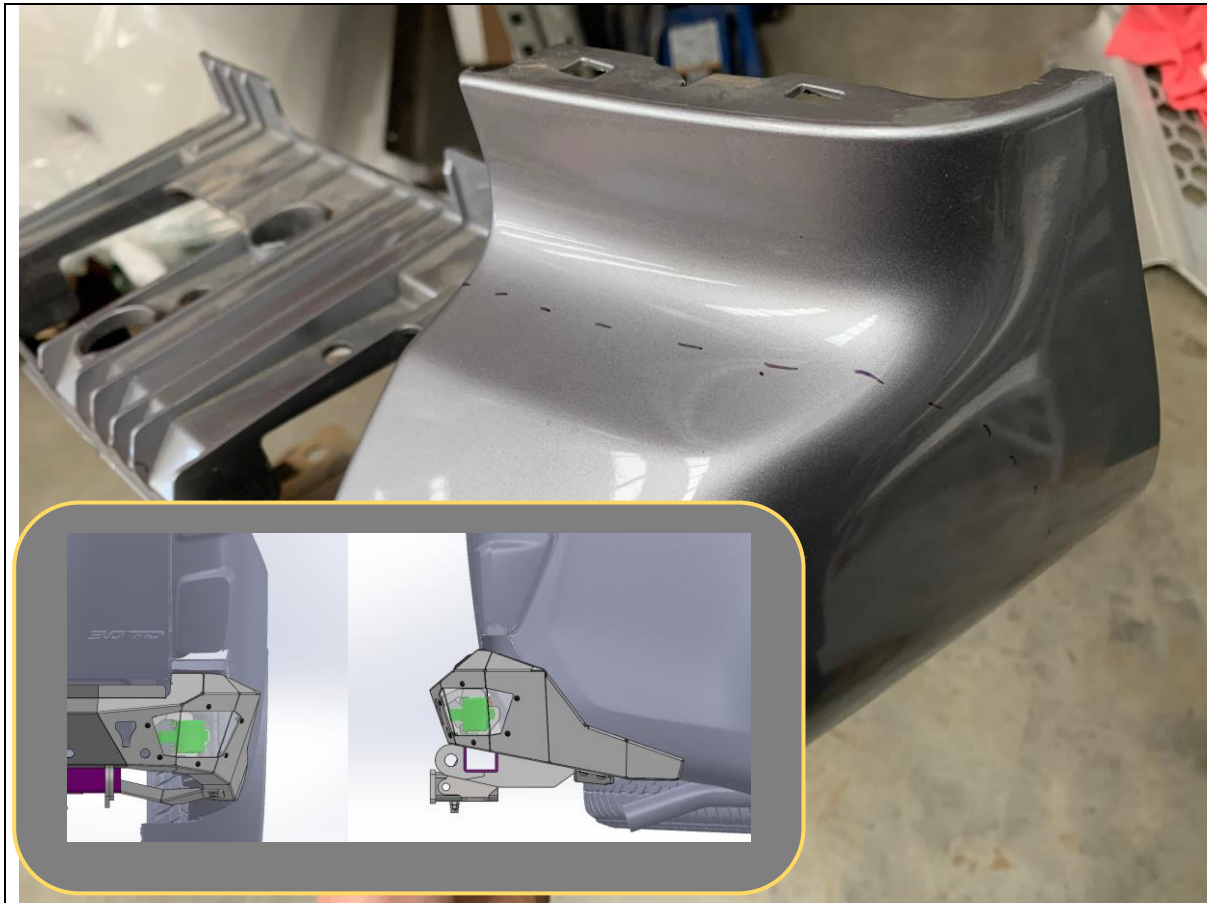




- 41. Fit rubber pinch weld to edges of wing, in the location shown by pushing rubber over the edge.
- 42. Complete for both sides of vehicle.
- 43. Re fit Number Plate to rear bar, using original hardware.

**TOOLS REQUIRED**  
Phillips Screwdriver

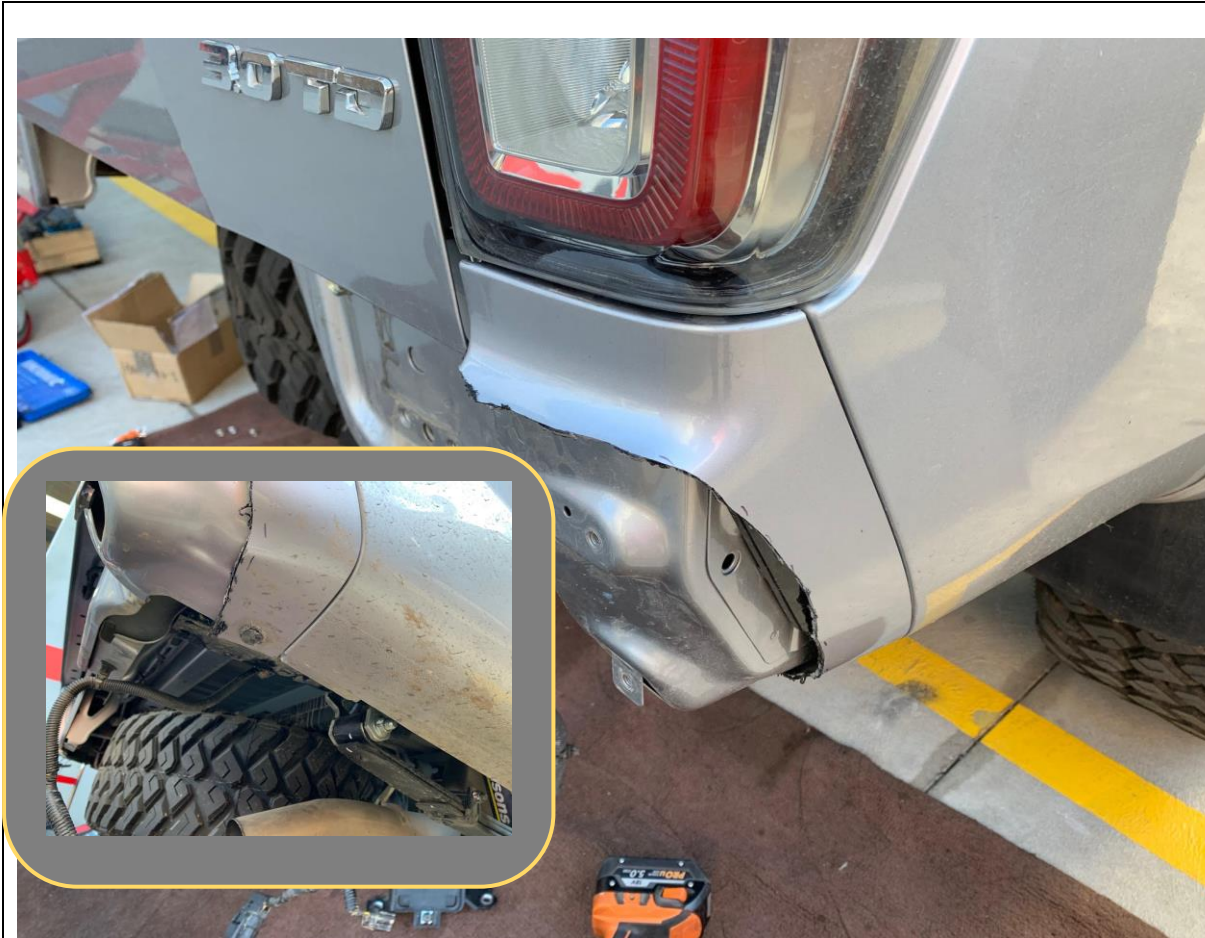
**FASTENERS**  
Original Number Plate Bolts



- 44. Mark location of bumper cut onto colored outer portion of bumper as shown in image.
- 45. The exact location of the cut is not critical provided it is below the location the bar will sit as shown in inset image

**TOOLS REQUIRED**  
Marker

**FASTENERS**

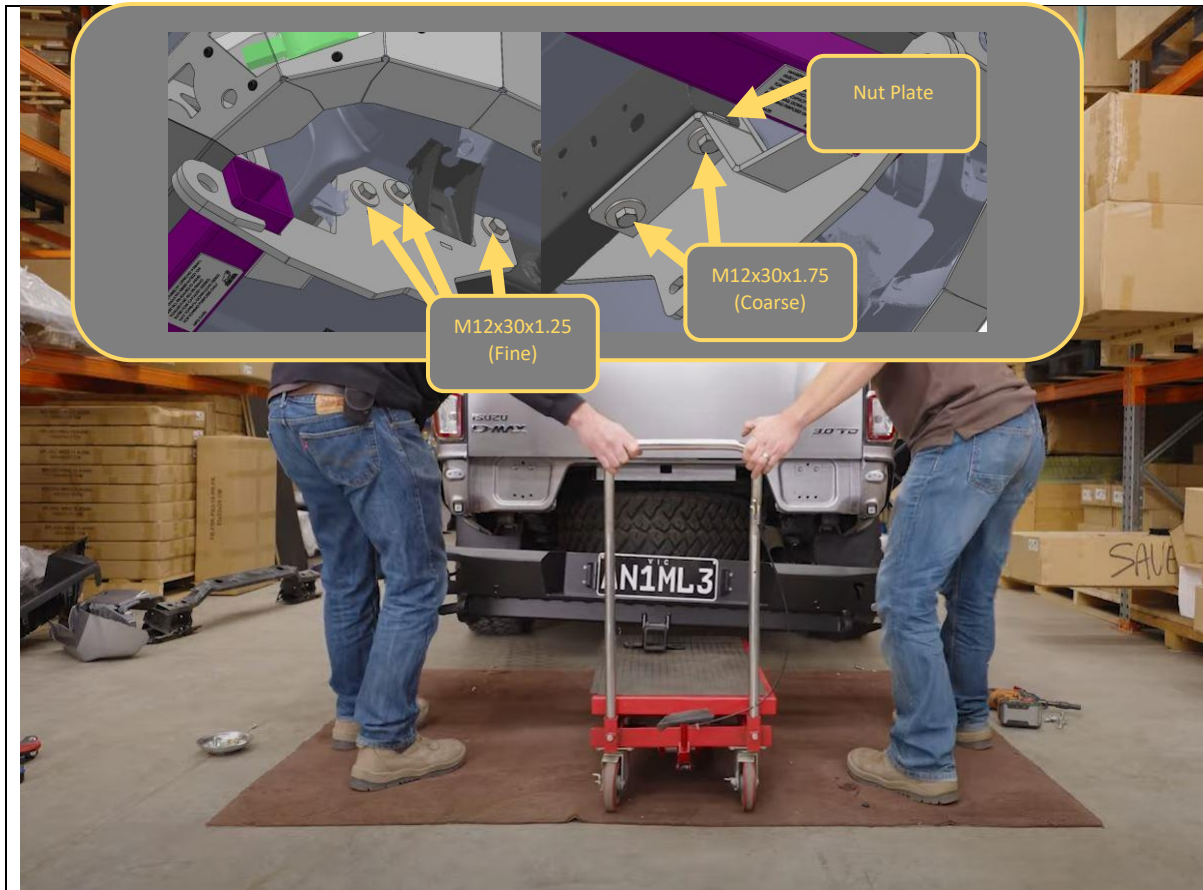


- 46. Trim along the line marked using air hacksaw or reciprocating saw.
- 47. Re fit trimmed bumper portion using clips under light and plastic clip, on the bottom corner as removed earlier.

**TOOLS REQUIRED**  
Air Hacksaw / Reciprocating Saw

**FASTENERS**





- 48. With assistance, from a lift trolley or another person, lift the rear bar onto the car.
- 49. Secure to side of chassis using 3xM12x30x1.25 Bolts, and M12 Large Flat Washers into captive chassis nuts
- 50. Secure to Bottom of chassis nuts using 2xM12x30x1.75 Bolts into the supplied Nut Plate

**TOOLS REQUIRED**  
18mm Socket / Spanner

**FASTENERS**  
2xM12x30x1.75 Bolts  
3xM12x30x1.25 Bolts  
M12 Nut Plate  
5x M12 Flat Washer

**per side**



- 51. Fit tub protection brace to the upright using 2x M10x30 Hex Bolts, flat washers, and M10 Flange nuts.
- 52. Secure to wing using 2x M10x20 Button head bolts, flat washers, and M10 Flange nuts.
- 53. Repeat for other side of vehicle.

**TOOLS REQUIRED**  
16mm Socket / 15mm Spanner  
6mm Hex wrench

**FASTENERS**  
2x M10x30 Hex Bolts  
2x M10x20 Button Head Bolts  
4xM10 Flange Nut  
4xM10 Flat Washer

**per side**



- 54. Secure trailer plug to bracket on vehicle using M5 Screw and Flange Nut provided
- 55. Secure the loom using cable ties as required.
- 56. Re connect the sensor and number plate lamp harness connectors

**TOOLS REQUIRED**  
8mm socket / spanner  
Phillips head screwdriver  
Cable Ties

**FASTENERS**  
2x M5 Phillips head screw  
2xM5 Flange nut.





- 57. Fit M10x25 Hex bolt and M10 Nut to anti rattle location on bottom of Hitch Box
- 58. Replace Trailer Ball Mount and secure with Pull Pin and R Clip.
- 59. Attach Offroad Animal Logo plate to chamfered face, using attached adhesive backing.
- 60. Fit towbar Compliance plate to underside of crossbar, using attached adhesive backing.
- 61. With that you are done!

**TOOLS REQUIRED**

- FASTENERS**
- Pull Pin
  - R-Clip
  - M10x25 Bolt
  - M10 Nut



**Congratulations!**  
**Head for the tracks and enjoy your newly protected DMAX!**