



TOYOTA LANCRUISER LC79

2007 ON DUAL CAB

ROCK SLIDERS

IMPORTANT! – READ BEFORE INSTALLATION

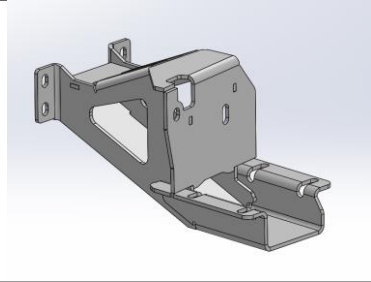
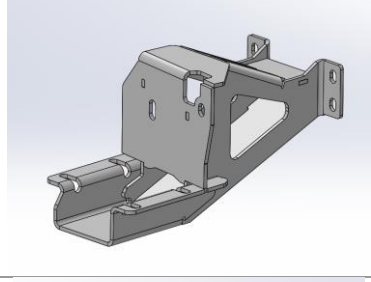
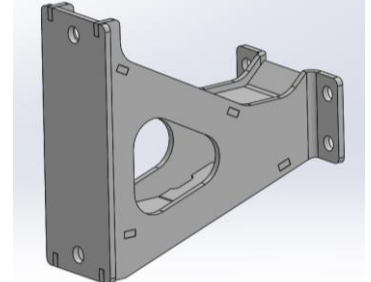
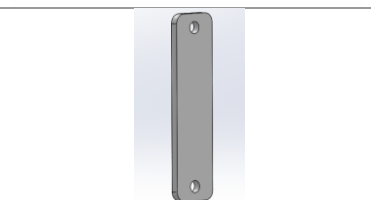
- When installed in accordance with these instructions, the front protection bar does not affect the operation of the vehicles SRS airbags.
- This product must be installed exactly as per these instructions using only hardware supplied.
- Take a few moments to read instructions thoroughly before beginning work.
- In the event of damage to any bar component please contact OFFROAD ANIMAL to arrange repair/replacement of components.
- Do not use this product for any vehicle make or model other than that specified on these instructions.
- Do not remove labels from this product.
- This product and its fixings must not be modified in any way unless stated in these fitting instructions.
- The installation of this product is recommended for trained personnel.
- These instructions are correct at time of publication. OFFROAD ANIMAL cannot be held responsible for the impact of any changes subsequently made by the vehicle manufacturer. If you find something has changed please contact us to let us know!
- During installation it is the duty of the installer to check correct operation/clearances of all components.
- If Instructions are to be printed for reference in the workshop, it is recommended that they are printed in colour, for best legibility.
- Fitting time estimated 1-2 hours

PARTS LISTING

IMPORTANT: Check all parts are present before beginning work! Contact OFFROAD ANIMAL if something is missing.

All fitments require the following parts, found in the Mounting kit.

Main Parts – Mounting Kit

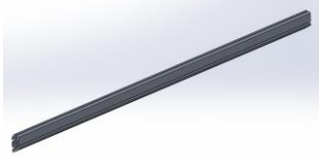
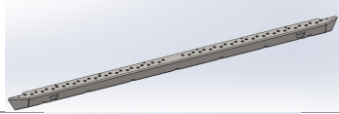
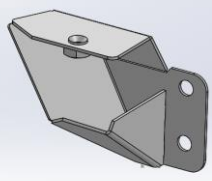
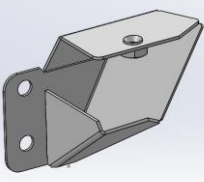
Qty	Part Number	Description	Image
1	RS-TLC-79-07-ASM2R	LC70 Slider Front Mount Assembly	
1	RS-TLC-79-07-ASM2L	LC70 Slider Front Mount Assembly	
4	RS-TLC-79-07-ASM3	70 Series Slider - Rear Mount Assembly	
4	P-0090	LC70 Rear Mount Backing Plate	

Mounting Kit Small Parts – Contained in Small Parts Kit Bag

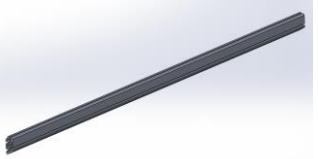
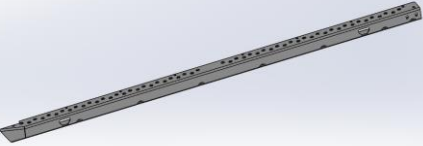
Qty	Part Number	Description
30	M10 x 25	Bolt Hex, M10X25x[1.5], GR8.8 ZP
15	M8 X 20 BHCS BLACK ZINC	SCREW, BUTTON HEAD CAP, M8X20X1.25 BLACK ZP
25	M8 FLAT WASHER- BLACK ZINC	M8 FW- BLACK ZINC
8	M8 X 25 HEX	Bolt Hex, M8X25x1.25, GR8.8 ZP
4	M8 HD FLAT WASHER	M8 FLAT WASHER - High Tensile 19x8x1.9mm
8	M12X90	Bolt Hex, M12X90x1.75, GR8.8 ZP
8	M12 FLANGE NUT	Flange Nut, M12x1.75 G8.8 ZP
8	M12 FLAT WASHER	M12 FW
30	M10 FLANGE NUT	Flange Nut, M10x1.5 G8.8 ZP
22	M8 NUT	Hex Nut, M8x1.25 G8.8 ZP
2	M8 FLANGE NUT	Flange Nut, M8x1.25 G8.8 ZP
4	P-0106	Back Chassis Spacer Plate
4	M8 FLAT WASHER	M8FW
11	M8X20 CAP SCREW	CAP SCREW, M8X20X1.25 GR10.9 ZP
2	NP-COM-M8-210-ASMO	M8 Nut Plate 210mm

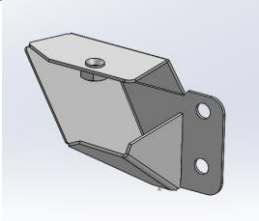
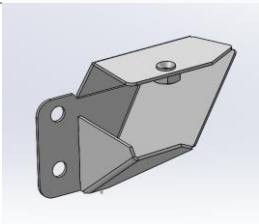
Depending if you are fitting Side rails or not you will require one of the following parts kits.

Rock Slider Kit – (Required if Not Fitting Side Rails)

Qty	Part Number	Description	Image
2	E-0002-1675	Slider extrusion -1675MM	
2	B-0084	slider step	
2	COM-RS-EC	Slider End Cap	
2	COM-RS-ECM	Slider End Cap	

Main Parts – Side Rail Step Kit (Required for Fitment of Side Rails)

Qty	Part Number	Description	Image
2	E-0002-1675	Slider extrusion -1675MM	
1	B-0243R	STEP - SIDE RAIL 1675 EXTRUSION	
1	B-0243L	STEP - SIDE RAIL 1675 EXTRUSION	

<p>1</p>	<p>COM-RS-EC</p>	<p>Slider End Cap</p>	
<p>1</p>	<p>COM-RS-ECM</p>	<p>Slider End Cap</p>	

TOOLS REQUIRED

The following tools will be required to install the product.

Hand Tools	Power Tools	Workshop Equipment
Metric Socket Set 8-19mm Socket Extension Bar Metric Spanner Set 10-19mm Torx Drivers T25-T30 Hex (Allen) Key Set 4-6mm Trim Puller Tool Flat Blade Screwdriver set Phillips Head Screwdriver set Utility Knife Side Cutters Pliers	Electric/Air Impact Driver (Optional)	Hydraulic Floor Jack

WORKSHOP SAFETY

It is the responsibility of the installer to always complete works in a safe manner. Make sure the following safety equipment is available and precautions are observed whilst fitting this product.

<p>Hearing Protection</p> 	<p>Always wear ear protection when using power tools.</p>
<p>Eye Protection</p> 	<p>Ensure eye protection is always worn when cutting or drilling.</p>
<p>Manual Handling</p> 	<p>Do not attempt to lift bar assemblies or rock sliders on your own.</p> <p>Always use two people to lift or use mechanical Lifting aid such as hydraulic lifting trolley.</p>
<p>Vehicle Support</p> 	<p>Always ensure vehicle is properly supported when working on it. Do not attempt to fit products whilst suspension work is being carried out. Do not work under a vehicle supported only by a jack.</p>



1. Remove the Factory side steps by removing the 12mm head bolts securing it to the body.
2. Discard Factory Steps

TOOLS REQUIRED
12mm Socket

FASTENERS

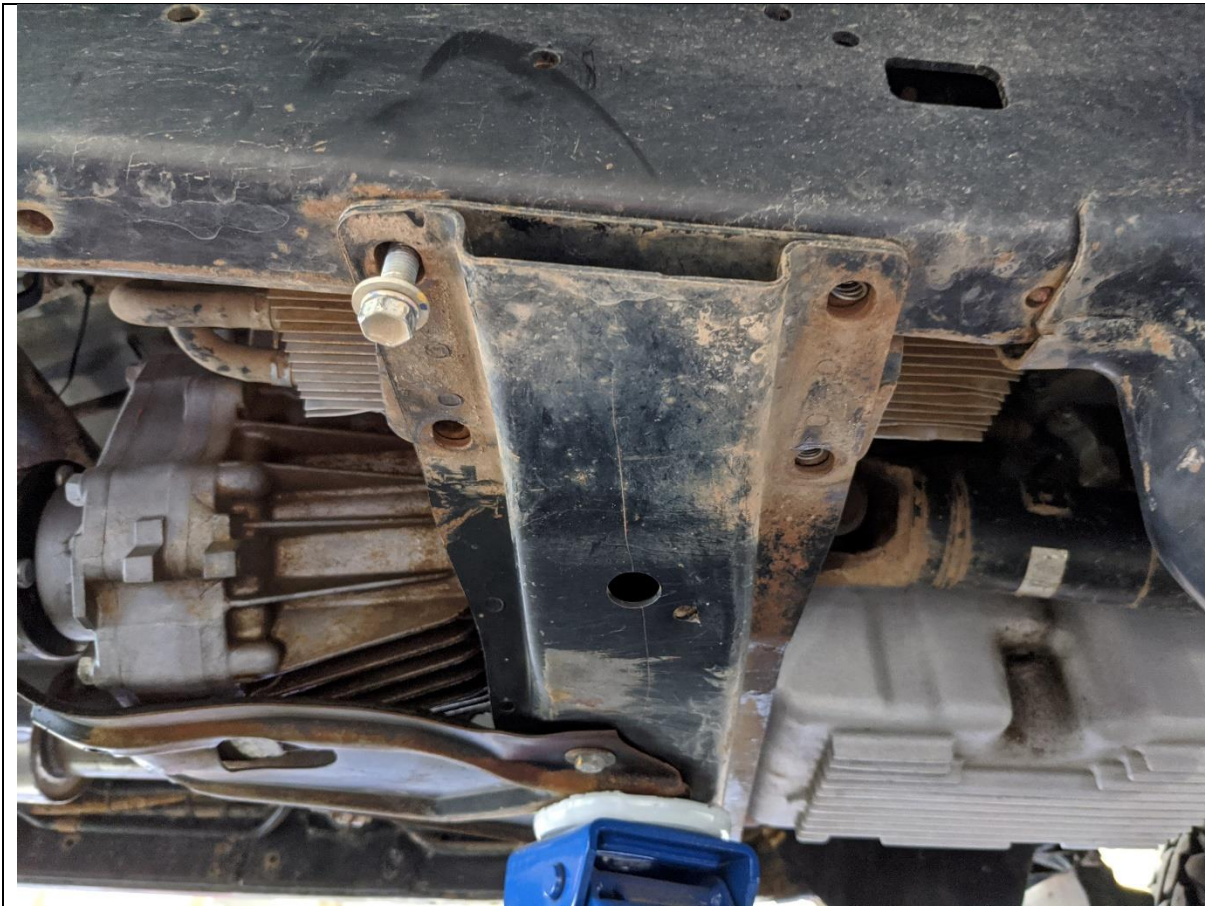


3. Place a Jack under the car to support the transmission cross member.
4. When installing the front mounts, complete the installation of one side before starting the other. Under no circumstances should both sides of the transmission crossmember be loose at the same time.

TOOLS REQUIRED

Jack

FASTENERS



5. Remove the Factory bolts securing the transmission crossmember to the chassis rail.
6. The transmission crossmember should not move, as the weight of the transmission should be supported by the jack. If the crossmember starts to move as you are loosening bolts, re tighten bolts and re-set jack before repeating.

TOOLS REQUIRED

Jack
14mm Socket

FASTENERS

4x Factory Fine Pitch Bolts
Per Side



- 7. Fit the front mount to the transmission crossmember, re using the original bolts.
- 8. Tighten Bolts, using 14mm socket

TOOLS REQUIRED
14mm socket

FASTENERS



9. Fit the rear M8 bolt with HD Flat washer to secure the top of the mount to the chassis.
10. Some vehicles have an M8 threaded point in this location. For vehicles that don't, use M8 nut plate, fed from rectangular hole in front of mount.

TOOLS REQUIRED

FASTENERS
M8x25 Bolt
M8 Flat Washer



11. Fit the front M8 bolt to the top of the mount. Hold M8 Flange nut behind hole location in chassis through Rectangular opening in chassis as shown in the image.

12. Tighten both M8 Bolts with 13mm Spanner

TOOLS REQUIRED
13mm Spanner

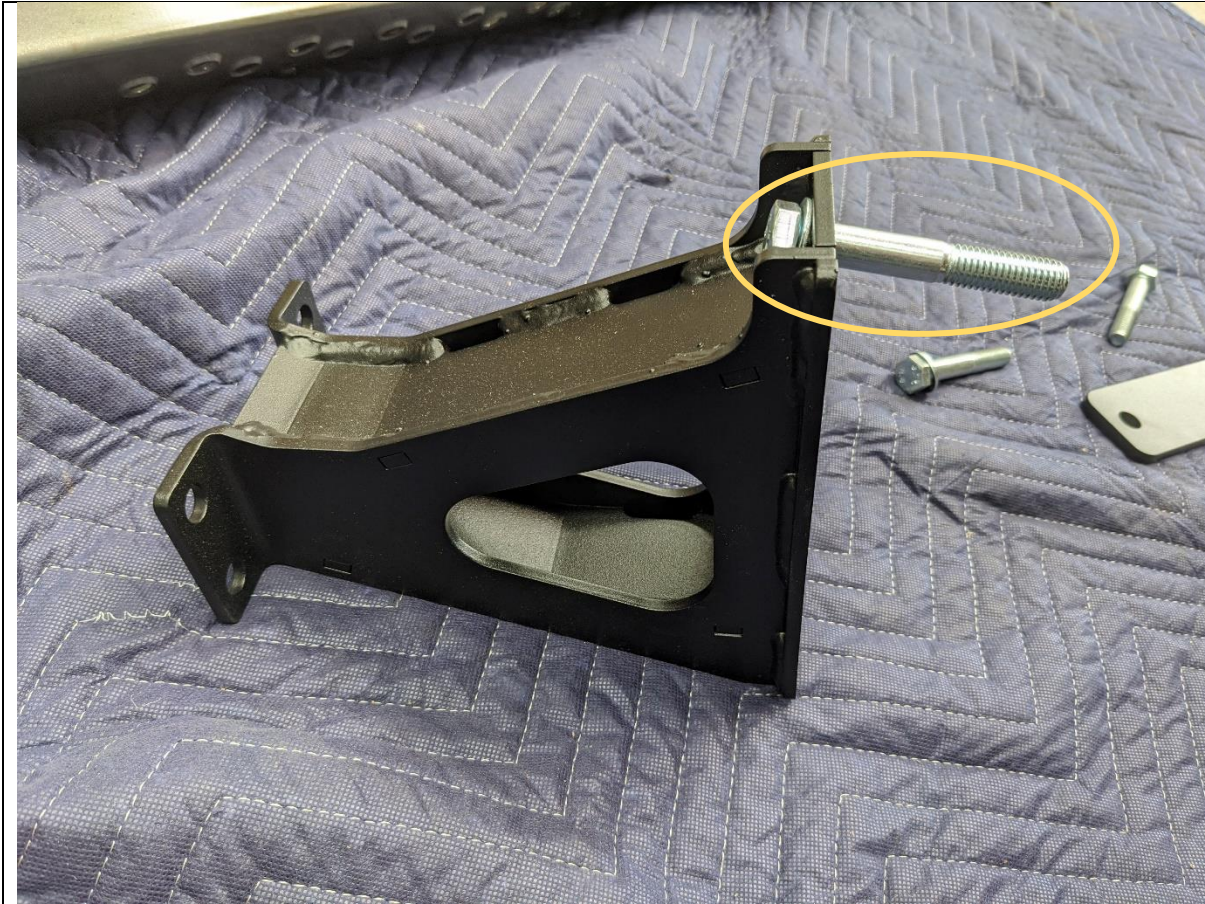
FASTENERS
M8x25 Bolt
M8 HD Flat Washer
M8 Flange Nut



- 13. Remove the 2x 12mm head bolts securing the hoses to the rear face of the chassis rail.
- 14. Fit small spacer plates between the chassis and bracket as shown. Secure with new M8x25mm Bolt supplied. Tighten with 13mm socket

TOOLS REQUIRED
12mm socket
13mm socket

FASTENERS
12mm head factory bolt – Discard
2x M8x25 Bolt
2xM8 Flat Washer



15. Prepare mid and rear mounts for fitting by threading through M12x90 Bolt through top hole.

TOOLS REQUIRED

10mm Socket

FASTENERS

M12x90 Bolt
Flat Washer

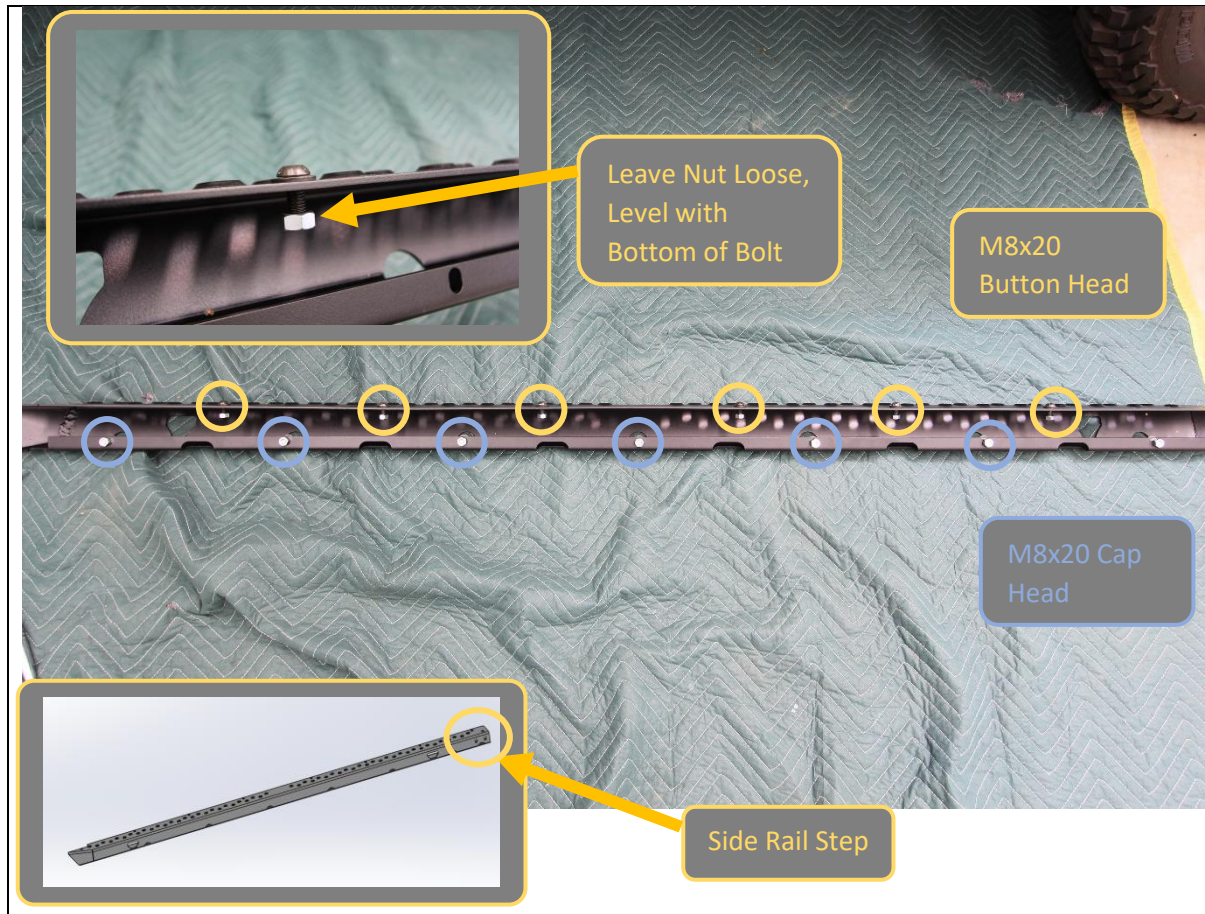
Per mount.



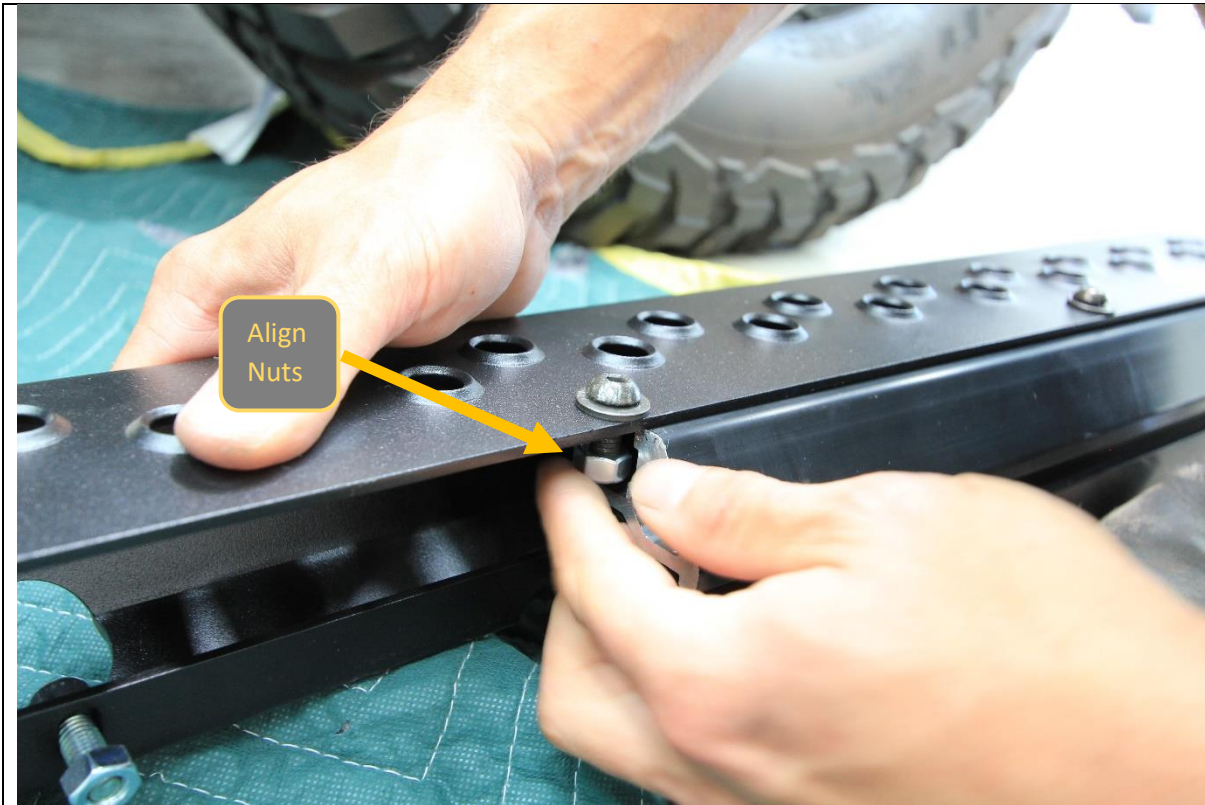
16. Raise Rear mount into position Fit Backing plate, secure with M12 Flange Nut.
17. Once top is secured fit bottom M12x90 Bolt and Secure with Flange Nut.
18. Leave bolts finger tight at this stage.

TOOLS REQUIRED

- FASTENERS**
M12x90Bolt
M12 Flange Nut
M12 Flat Washer



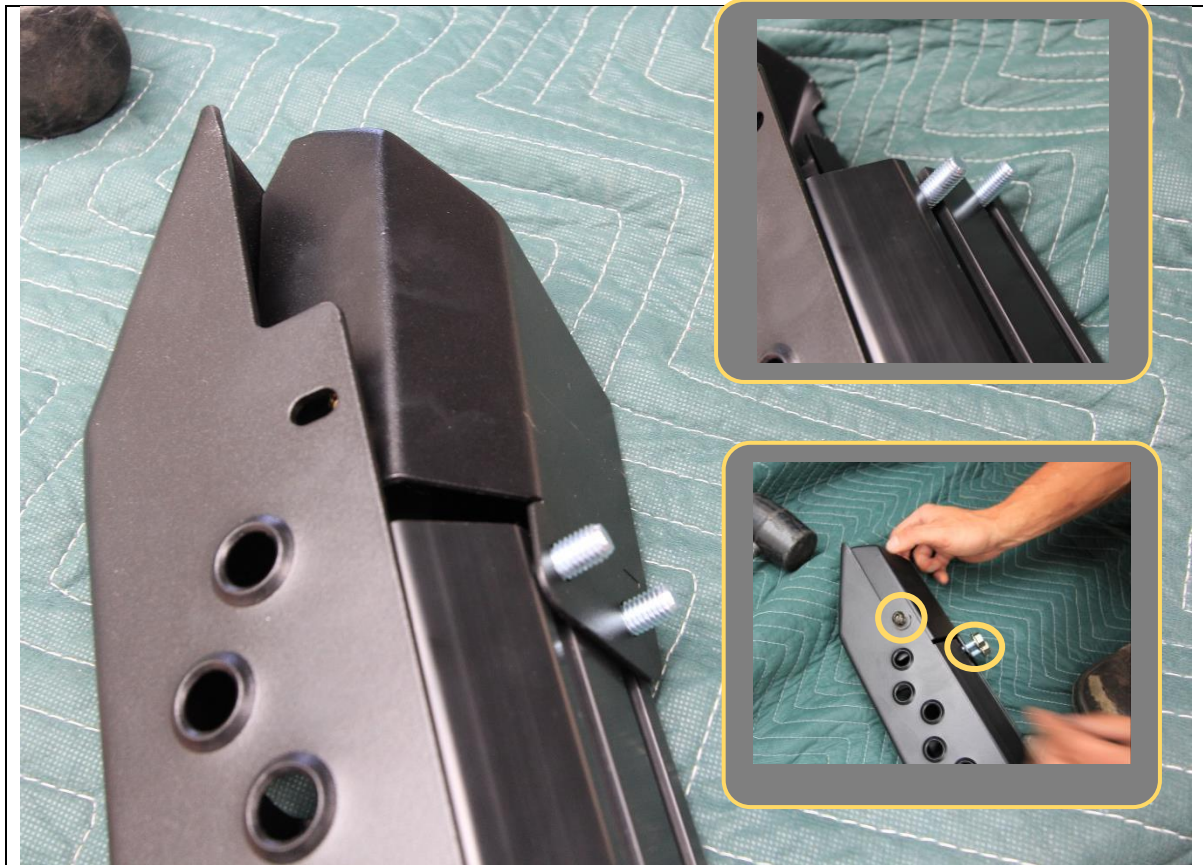
<p>19. Prepare step plate by loosely pre fitting the fasteners to the step.</p>	<p>TOOLS REQUIRED</p>
<p>20. Note: Steps are handed for Side rail type steps but technique for fitment to extrusion is the same.</p> <p>21. Use M8x20 black button head screws, black M8 washers and M8 Nuts on 6x locations on top of step as shown</p> <p>22. Use M8x20 cap head screws M8 washers and M8 nuts on 7x locations on bottom side of step.</p>	<p>FASTENERS</p> <p>6x M8x20 Black Button Head 7xM8x20 Cap Head 13x M8 Black Washer 13x M8 Nut</p>



23. Slide the step plate onto the main slider structural extrusion. Align the nuts as they enter the T Slots on the extrusion.
24. Center the Step on the extrusion, by measuring distance from extrusion to tip of step, and adjusting until both sides are equal.

TOOLS REQUIRED

FASTENERS



25. Fit end cap to one end of the extrusion. NOTE: if fitting side rail steps this needs to be the rear.
26. First slide 2x M10x25 Hex bolts into the T slots on back side of extrusion.
27. Fit end cap over these bolts.
28. Secure with M10 flange nuts on T slot bolts and M8x20 bolt in top, through tread plate. End cap should align with end of tread plate if tread plate is centered correctly.

TOOLS REQUIRED

FASTENERS

- 2x M10x25 Bolts
- 1x M8x20 Button Head bolt
- 1xM8 Flat Washer
- 2x M10 Flange Nut



29. Slide the 12x M10x25 Hex bolts into the T slots on back side of extrusion. 6 bolts per slot.

30. Loosely arrange the bolts in 3x groups of 4, in approximate location of mounts, as shown.

TOOLS REQUIRED

FASTENERS

12x M10x25 Bolts



<p>31. Fit mirrored end cap to remaining end of slider, using 2x M10x25 hex bolts and M8x20 Button head bolt with flat washer as per previous. – Note: This is not required when fitting side rail steps.</p> <p>32. Check alignment of end caps, End cap should align with edge of tread plate if properly centered. Adjust end cap / tread plate position as required.</p>	<p>TOOLS REQUIRED</p> <p>5mm Hex key 6mm Hex key 15mm spanner</p>
<p>33. Once happy with alignment tighten all bolts on slider extrusion, using 5/6MM hex key and 15mm spanner.</p>	<p>FASTENERS</p> <p>2x M10x25 Bolts 1x M8x20 Button Head bolt 1xM8 Flat Washer 2x M10 Flange Nut</p>



- 34. With Assistance from another person, or mechanical lifting aid such as a lift trolley, Lift the slider onto the mounts.
- 35. Manipulation of position of bolts in T slot to align with mounts will be required to get slider on. Secure with M10 Flange Nuts

TOOLS REQUIRED
5mm Hex key
6mm Hex key
15mm spanner

FASTENERS
12x M10 Flange Nut



Check Clearance

- 36. Adjust fore / aft position of sliders on mounts to achieve even appearance if required.
- 37. Aim for a continuation of the guard line into the slider step at the rear as shown.

TOOLS REQUIRED

FASTENERS



38. Once satisfied with alignment, which should be parallel to the body, tighten all bolts, starting with chassis mounts.
39. Tighten Mid and Rear mount bolts using 18mm Socket / Spanner. Ensure that mid / rear mounts are tightened evenly, by alternating a few turns on top then bottom bolt when tightening.

TOOLS REQUIRED
18mm Socket / Spanner
5mm Allen Key

FASTENERS



40. Tighten all mount to slider M10 flange nuts using 15mm spanner. A ratcheting spanner makes this process easier

TOOLS REQUIRED
15mm Socket / Spanner

FASTENERS



41. Repeat the entire process for the other side of the vehicle. Note different mount on back LHS as mentioned in step 8.
42. After that you are done!
43. If you are going on to install the Side Rail Kit, refer to separate instruction for kit.

TOOLS REQUIRED

Refer to Side Rail Instruction

FASTENERS

Refer to Side Rail Instruction



Congratulations!
Head for the tracks and enjoy your newly protected Cruiser!