



Your 4x4 Accessory Adventure Partner.

FITTING INSTRUCTIONS

SS1-FORD-04

SIDE STEPS

RA FORD RANGER 2023+




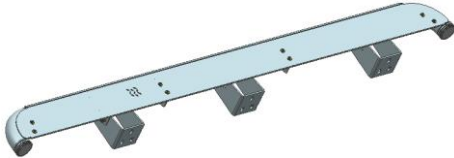
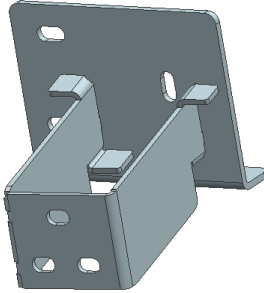
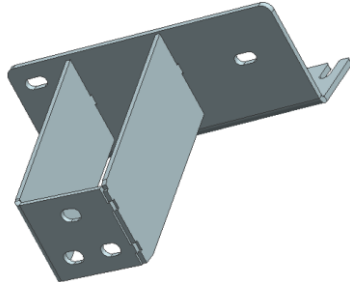
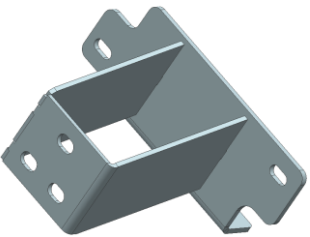
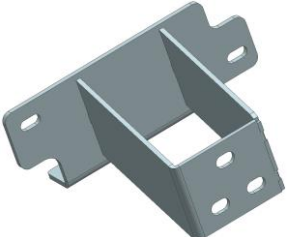
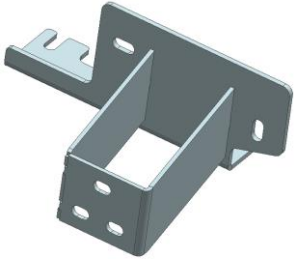
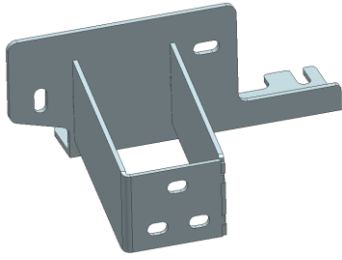
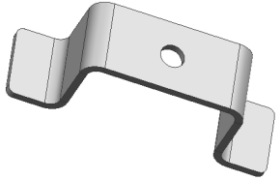
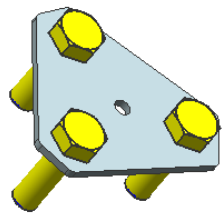
**ALL EFS BULL BARS HAVE BEEN TESTED AND ARE AIRBAG & ADR COMPLIANT.
ANY MODIFICATIONS TO THE BULL BAR OR ITS MOUNTS WILL VOID THIS COMPLIANCY AND WARRANTY**

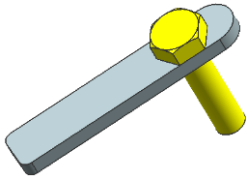
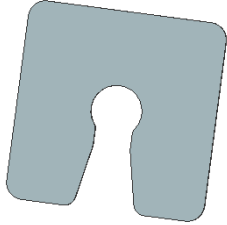

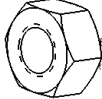

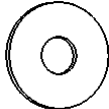
BEFORE INSTALLATION

- Please read the instructions completely before installing. This will allow for easy installation and help to avoid scratches or other potential damages to the vehicle.
- images are for reference only and may differ slightly from the actual product you are installing. Whilst images may differ, they share the same assembly instructions.

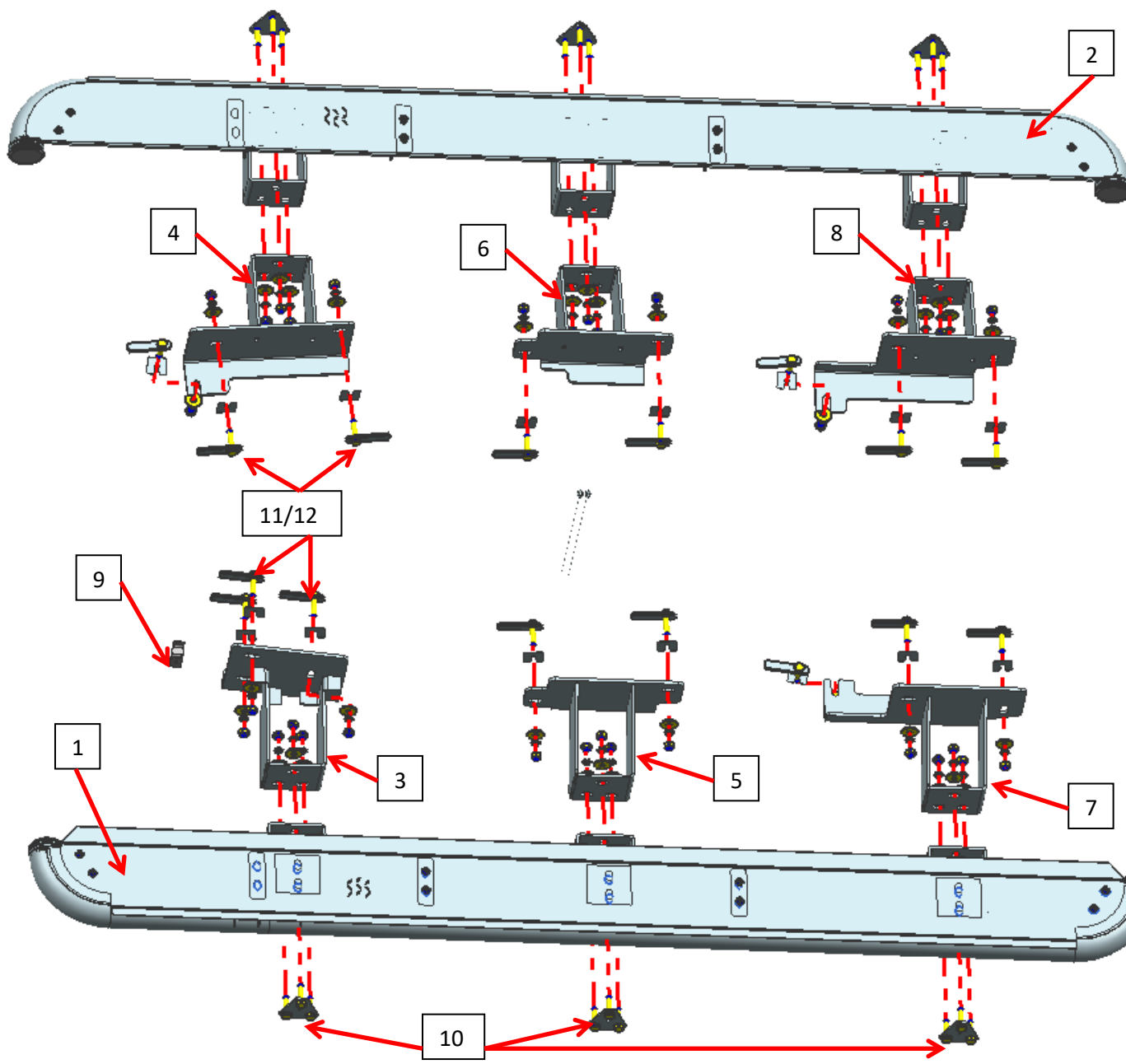
It is a condition of our warranty that Bullbar / Rearbars & Side rails / steps are installed by a suitably qualified installer. And is installed in accordance with accompanying installation instructions provided with item.

PARTS LIST

NO.	QTY	NAME	NO.	QTY	NAME
1	1	 Side Step (L)	2	1	 Side Step (R)
3	1	 Front Bracket (L)	4	1	 Front Bracket (R)
5	1	 Central Bracket (L)	6	1	 Central Bracket (R)
7	1	 Rear Bracket (L)	8	1	 Rear Bracket (R)
9	1	 Brake line space	10	6	 Bolt Plate M10x35

11	16	 T-Bolt M10x40	12	16	 M10 Plastic Block
Hardware List					
13	2	 M10 Bolt Wire	14	36	 Hex nut M10
15	36	 Spring washer D10	16	36	 Large washer D10_30_2.5

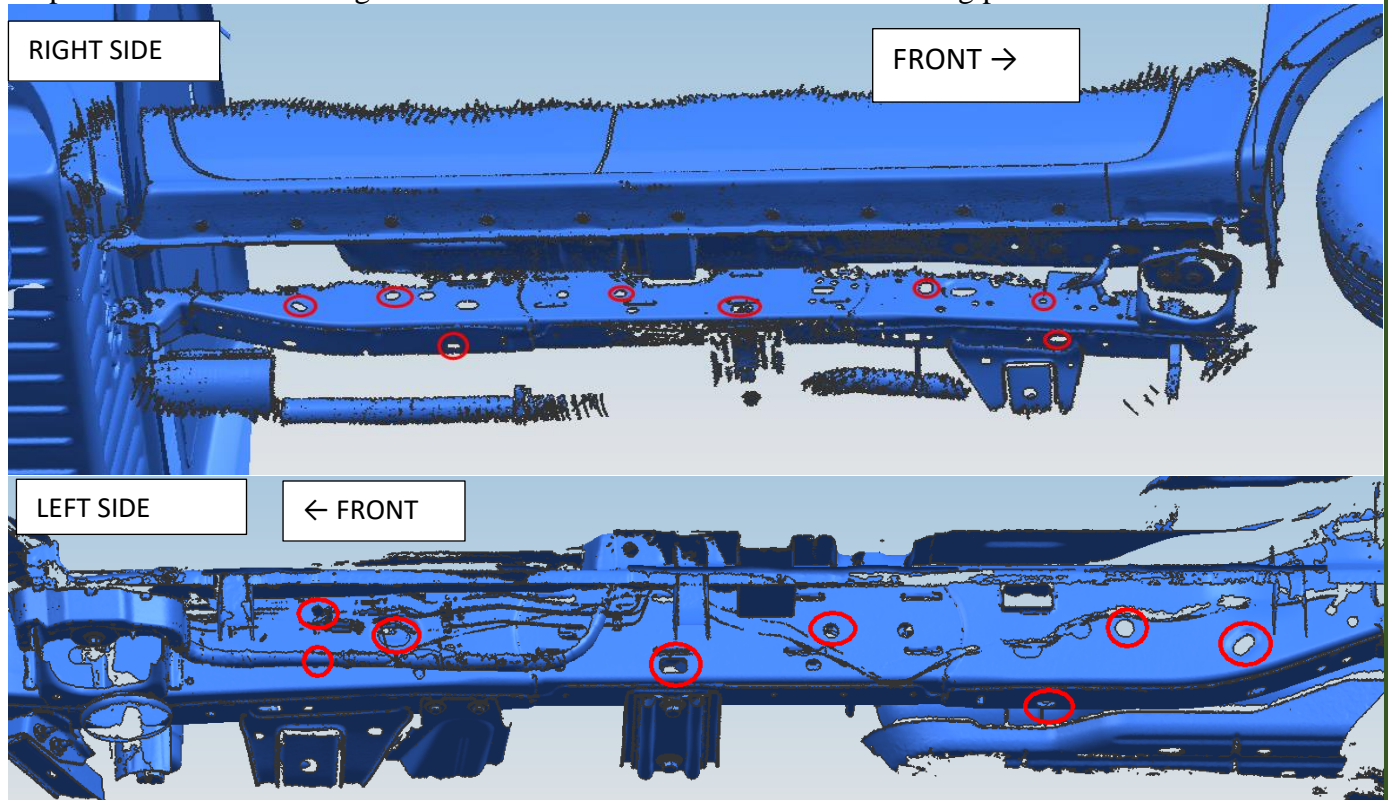
Installation Fig.



INSTALLATION INSTRUCTIONS

Step 1: Verify that all parts are present according to the manual.

Step 2: Locate the mounting holes on the chassis rail as shown in following pictures.

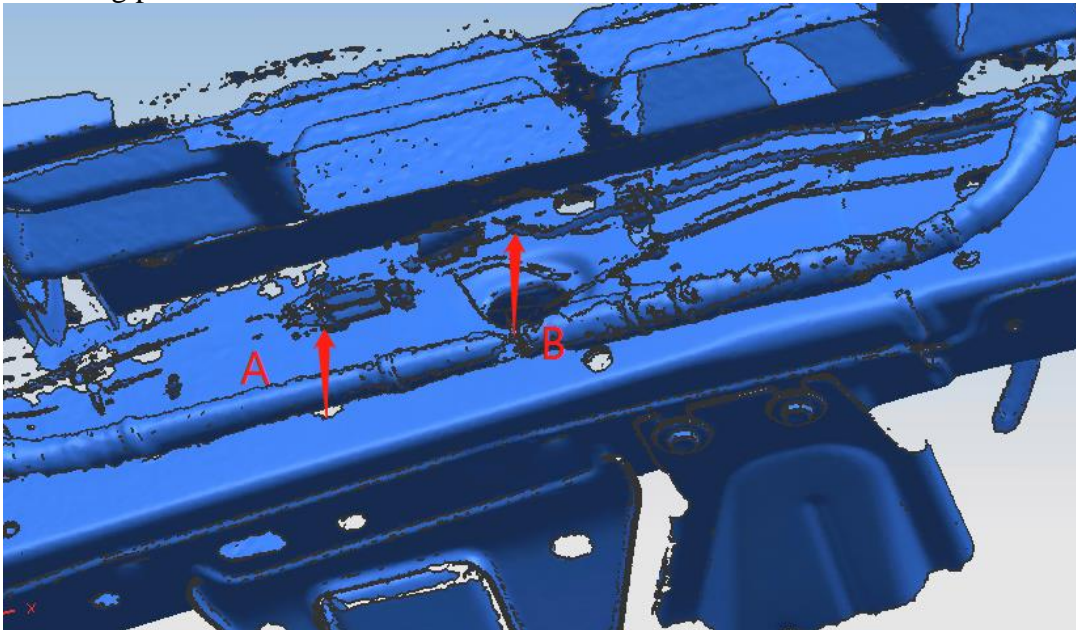


Install front bracket (L)

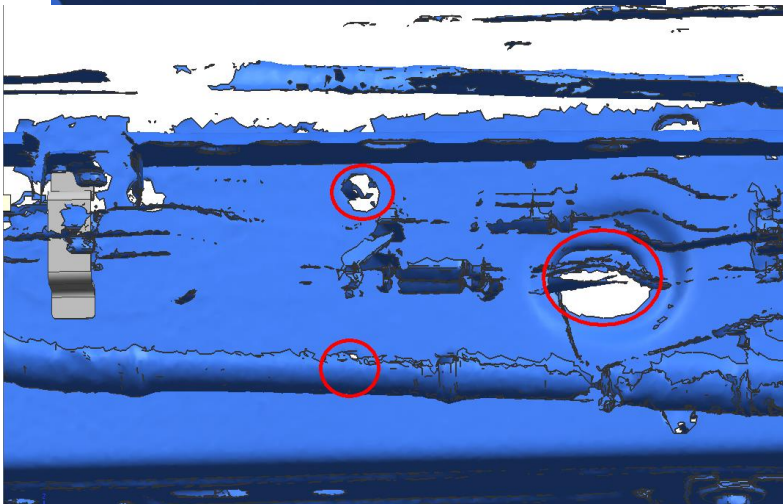
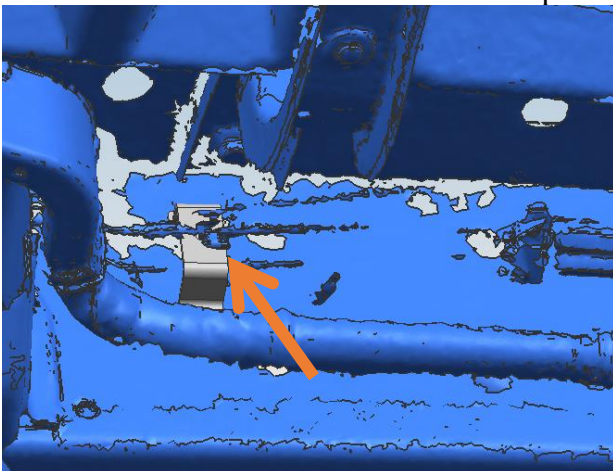
Unclip the two clips securing the black harness on chassis.



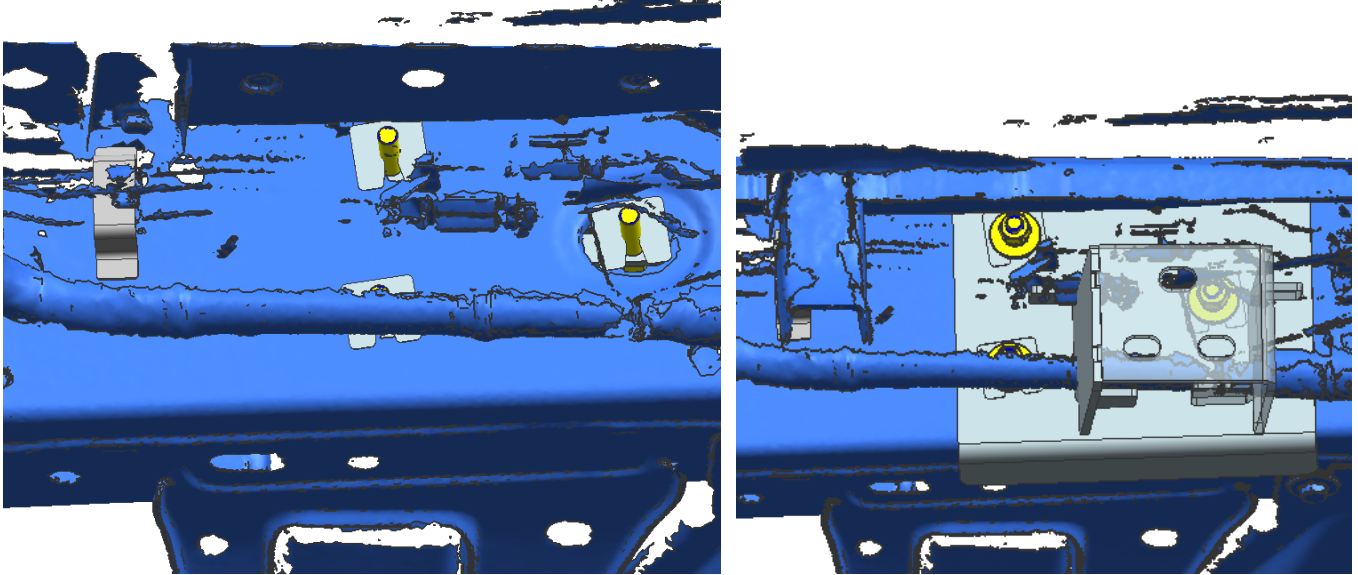
Move the white spacer block from A to B to clear out room for front bracket installation as shown in following picture.



Unclip and take out the clip which is securing the brake line to chassis, re-clip the supplied break line spacer (9) in order to lift up the break line for front bracket installation. Find the following three hole positions in the front section of the chassis rail showed as picture below.



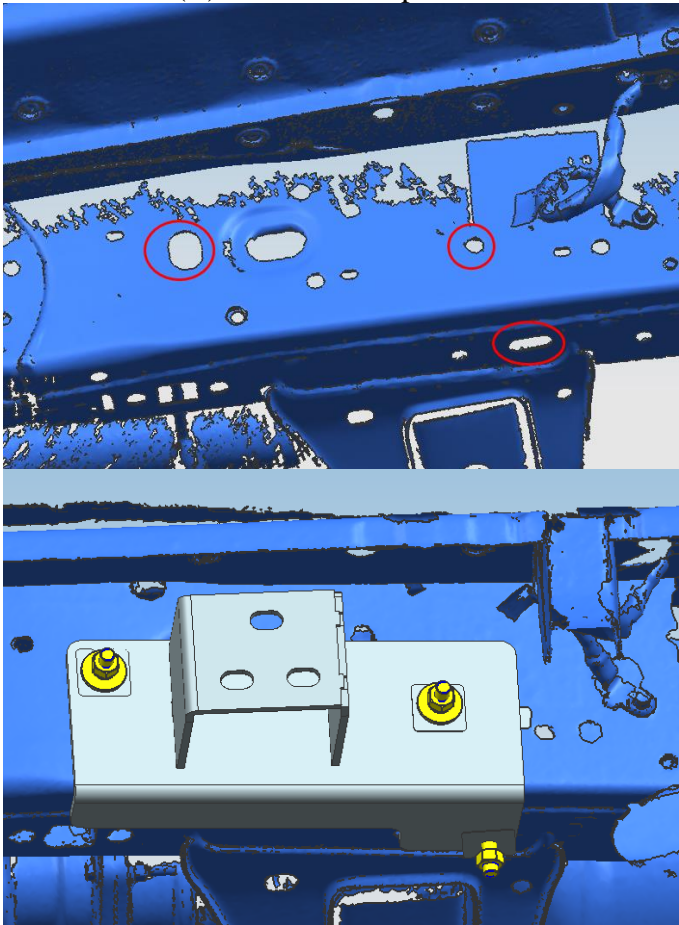
Insert (11) T-bolt out of the hole position and retain it with the (12) plastic bolt retaining block, then align front bracket (L) with the hole position for installation, and lock it with (14)(15)(16) showed as below.



Install the front bracket (R)

Find the following three hole positions in the front section of the chassis rail shown in picture below.

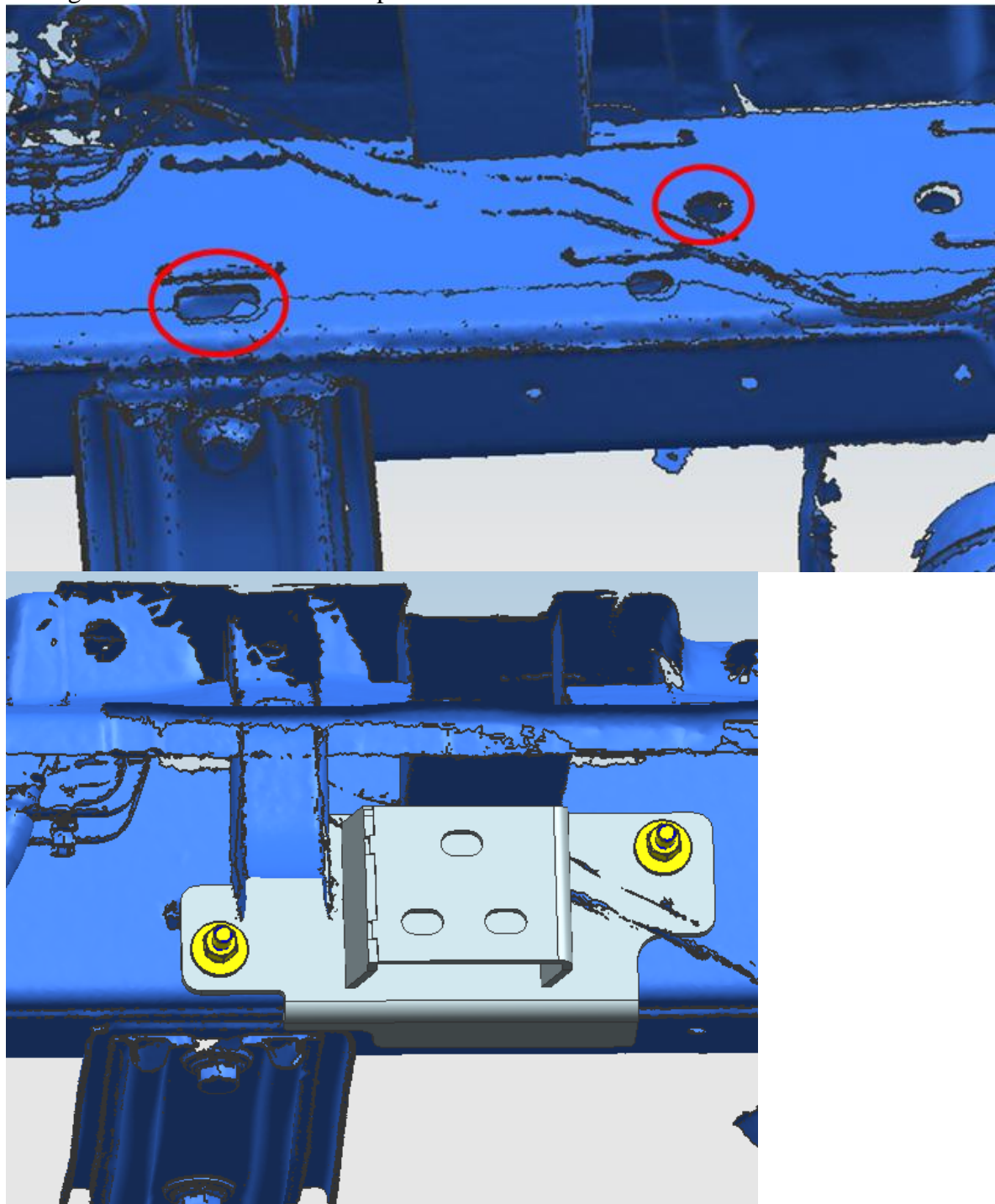
Insert (11) T-bolt out of the hole position and retain it with the (12) plastic bolt retaining block, then align front bracket (R) with the hole position for installation, and lock it with (14)(15)(16) shown as below.



Install the central bracket

Find the following three holes positions in the middle section of the chassis rail shown in the picture below.

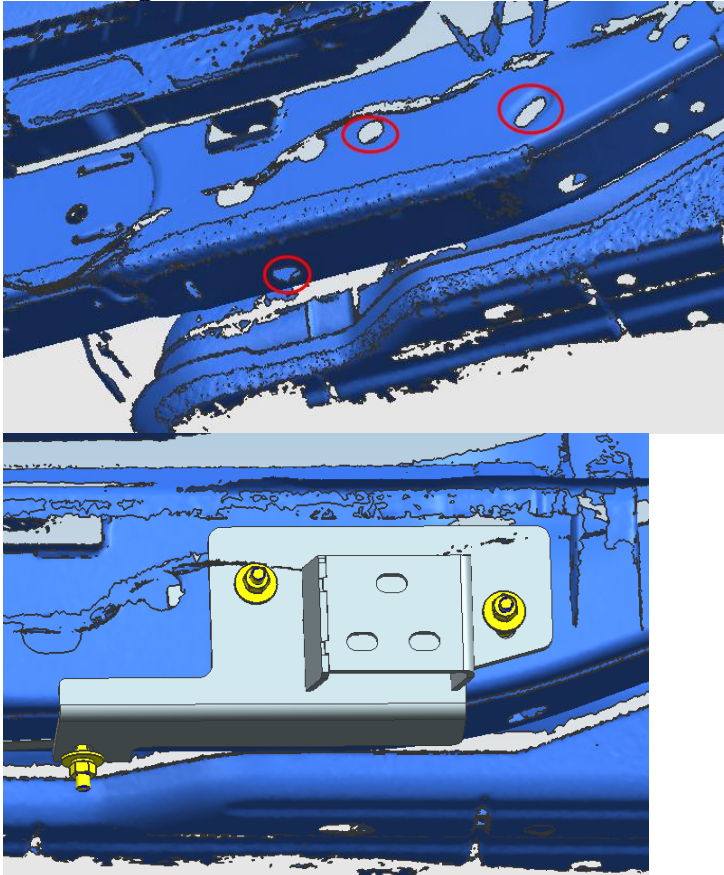
Insert (11) T-bolt out of the hole position and retain it with the (12) plastic bolt retaining block, then align front bracket (R) with the hole position for installation, and lock it with (14)(15)(16) shown as below. Left and right are the same installation process.



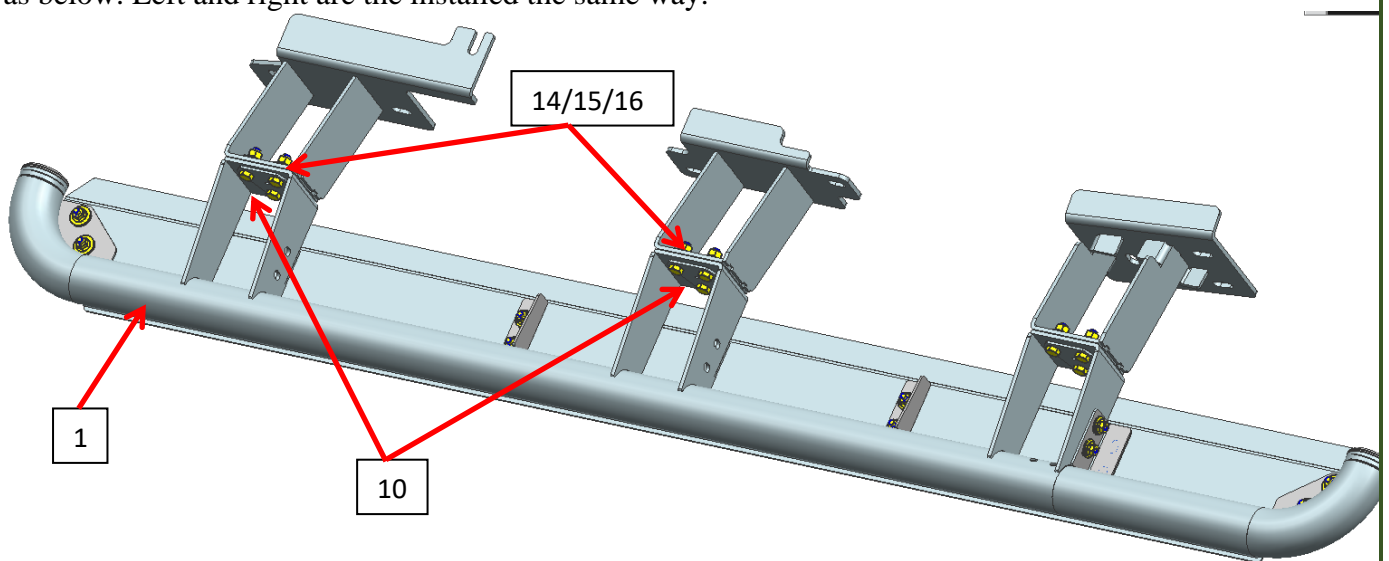
Install the central bracket

Find the following three holes positions in the rear section of the chassis rail

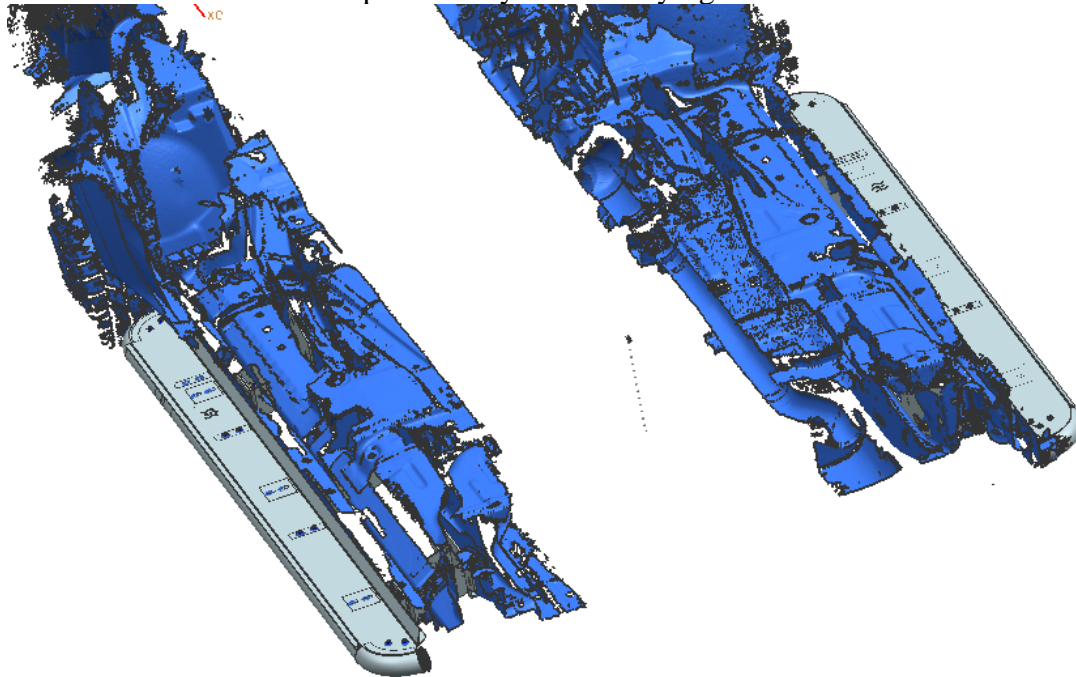
Insert (11) T-bolt out of the hole position and retain it with (12) Plastic bolt retaining block, then align front bracket (R) with the hole position for installation, and lock it with (14)(15)(16) showed as below. Left and right are the same installation way.



Step 3: Attach the side step to the chassis brackets by bolt plate (10) and lock it with (14)(15)(16) showed as below. Left and right are the installed the same way.



Step 4: Test and make sure that the step is steadily fixed. Fully tighten all hardware.



Step 5: Installation is finished, pick up all tools.

NOTE

Any damages or loss caused by the improper installation and use of EFS Accessories will not be covered by warranty.

Please ensure you leave sufficient spacing between bullbar and guards