



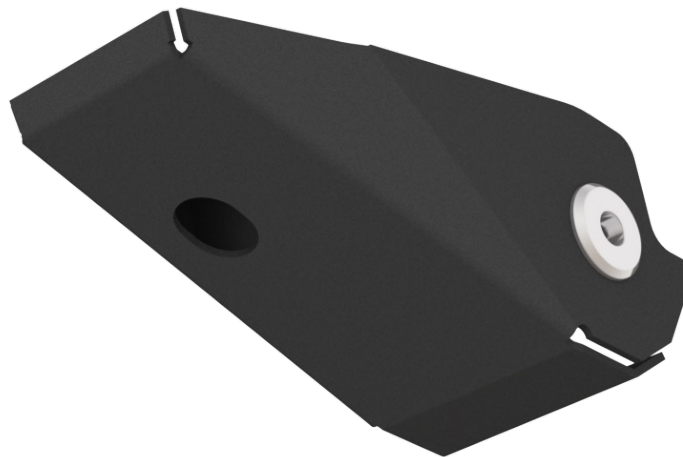
Rear Control Arm Protection Guard Set – Suzuki Jimny JB74W

Part: TLR632401

These robust Control Arm Protection Guards are not only design to protect the OEM control arm chassis mount from damage but also provide the additional strength and approach angle to help slide over any obstacle that may come into contact.

The Protection guard itself is manufactured from 3.00mm Zinc coated steel and powder coated in a durable textured powder coat.

The unique design uses specifically designed and machined 6000 series aluminium bushes to mount the protection guard and ensure the control arm is fixed securely, TLR have also accommodated an additional mounting point into the chassis for added strength and securely hold the guard in position.



Features:

- Laser cut from 3.00 mm Zinc Coated Steel.
- Powder coated in a black textured finish for added corrosion resistance.
- Easy fitment with no modifications required.

Includes:

- 1 x TLR Products Rear Protection Guard Set. (Drivers Side & Passenger Side)
- Fitting kit including all hardware and fasteners required for fitment.

TLR Products is Australian owned, with all products designed and manufactured in Newcastle, NSW.



Note:

- Weight:
- Dimensions: 250 x 100 x 100 mm
- Warranty: 3 years
- Fitting time: 45 mins

TLR Products is Australian owned, with all products designed and manufactured in Newcastle, NSW.