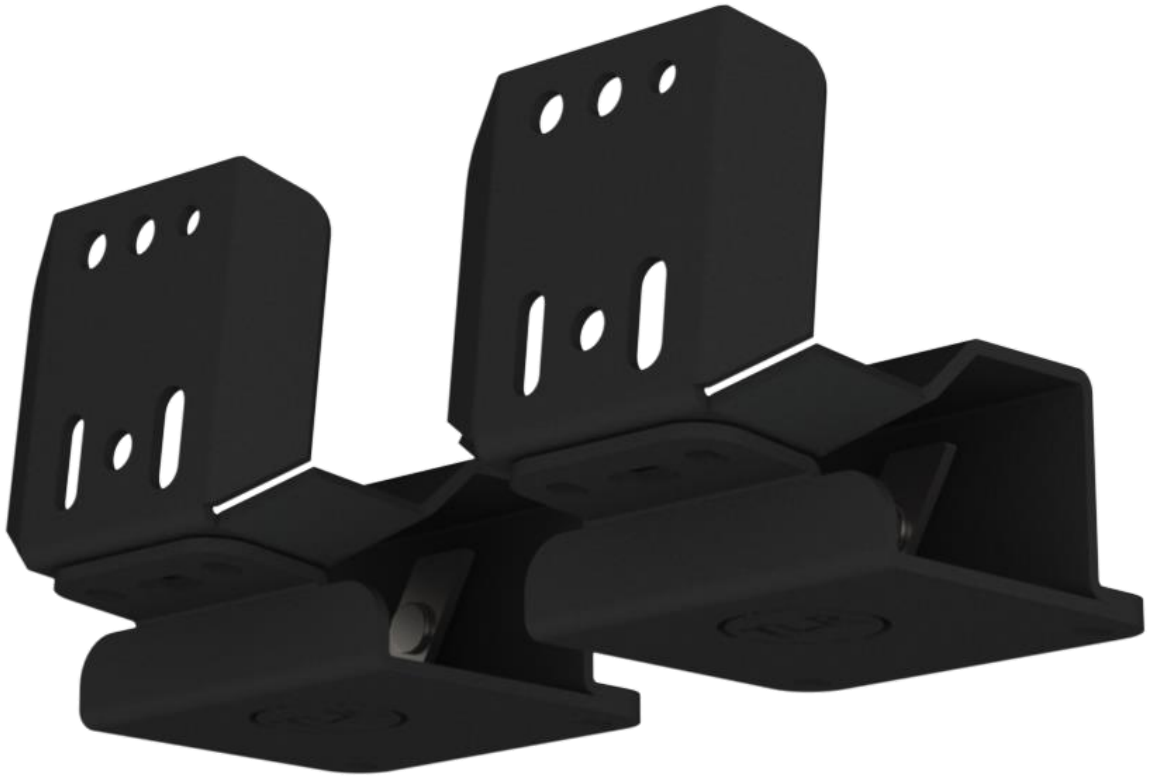




AWNING BRACKETS

TLR945101



SUITED TO:

GWM TANK 300 OEM ROOF RAIL



PRE-INSTALLATION



Read through this installation guide before proceeding.



Fitting time is approx. 45 minutes.



Socket, spanner set, In-hex sockets or Allen keys

FITTING KIT

QUANTITY	PART
2	TLR945101-1 – Main Awning Mount
2	TLR945101-2 – Bottom Clamping Plate
2	TLR945101-3 – Channel Nut
8	M6 x 16 Button Head - Stainless Steel
10	M6 Nyloc Nut – Stainless Steel
18	M6 x 12mm Flat Washer – Stainless Steel
2	320mm Long x 25mm Wide Protection Tape

NOTE:

These Awning Mounting Bracket are designed to clamp around the OEM roof rail of the GWM Tank 300.



Photo 1



Photo 2



FITTING INSTRUCTIONS

1. Cut the supplied Protection Tape to suit and place on both TLR Products Mounting Brackets *as per Photo 1 & 2*.
2. Install Channel Nut into OEM roof rail and mount main mounting bracket into place *as per Photo 3*.
3. Install the lower clamping plate using the M6 hardware supplied *as per Photo 4*.
4. Ensure all mounting bolts are tightened securely.
5. Repeat these steps for the other mounting bracket.
6. Install Awning of choice.

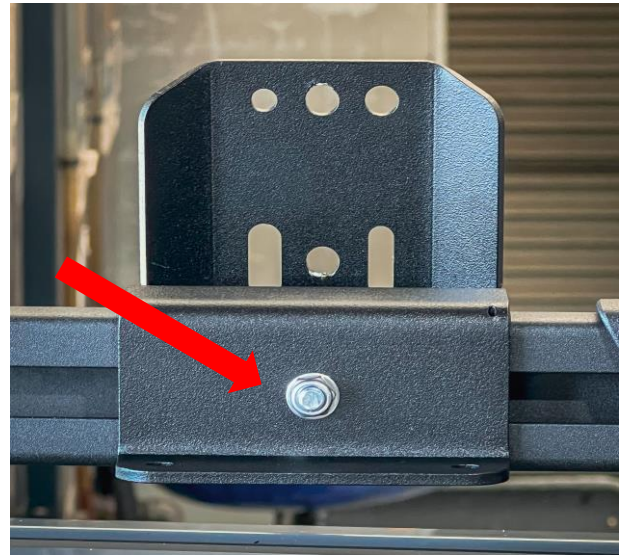


Photo 3

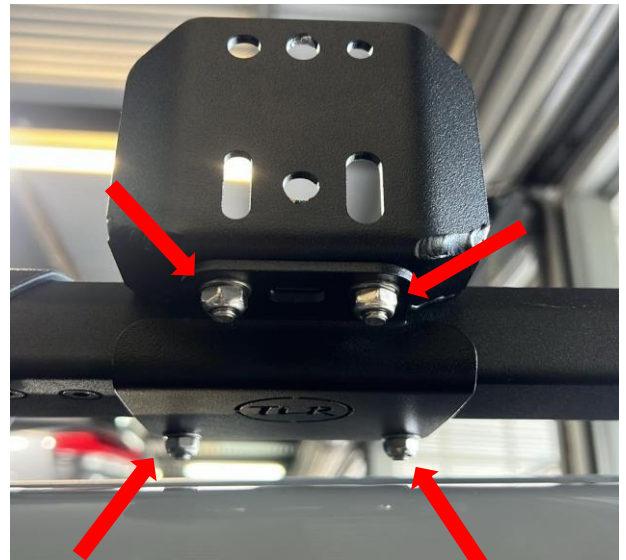


Photo 4



TLR Products
65 Northville Drive
Barnsley NSW 2278



[instagram.com/tlrproducts](https://www.instagram.com/tlrproducts)
[facebook.com/tlrproducts](https://www.facebook.com/tlrproducts)



hello@tlrproducts.com.au
www.tlrproducts.com.au

