

P32 Installation Instructions Mirror & Window Module

TRAC

ELECTRONICS

Email: info@tracelectronics.com.au

Website: <https://tracelectronics.com.au>

Model # P32 (D-Max) & P32A (BT-50) P32B (MU-X)

January 2024

Suitable for the 3rd Generation Isuzu D-Max, Mazda BT-50 and 2nd Generation Isuzu MU-X

Module Function: Lock doors using key remote or button on front doors, both mirrors fold in, unlock doors using key remote or button on front doors both mirrors fold out. Mirror switch on armrest operates normally when ignition is on.

Windows will then be closed if left open after the ignition has been turned off once all doors are closed and locked and can be controlled remotely by the key remote to open and close or pause during operation.

Models with proximity locking the mirrors will fold in and any open windows will be closed when the vehicle automatically locks (dependant on window lock switch position).

System includes:

- Auto Mirror& Window Module
- Harness with direct plug & play connectors
- Adhesive pad (hook & loop) to attach module to inside of door panel (card)

Additional tools required:

- Phillips screwdriver (PH1)
- Trim tool

NOTE: This module is only suitable for vehicles fitted with factory fitted electric folding mirrors. If your vehicle does not have factory fitted electric folding mirrors the mirrors will **NOT** function.



NOTE: Read full instructions before commencing installation.

First test the existing electric mirror function (if applicable) before starting this installation.

1. Turn on the ignition
2. Press the auto fold button located on driver's side armrest above the window switches if operating correctly both mirrors will fold in, press the button again they should completely fold out. If they do not function in this way, then the module will not operate correctly. Do not proceed with installation until they operate accordingly
3. Lower driver's side window completely, turn ignition off and remove key (if applicable).

P32 Installation Instructions Mirror & Window Module

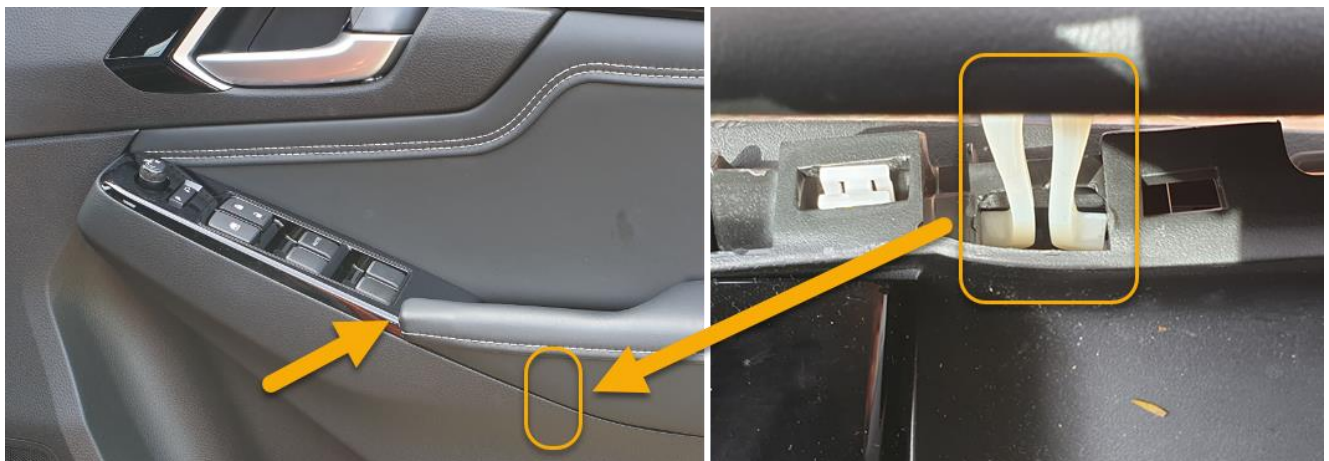
Quarter Panel removal:

- Remove the small plastic plug (unscrews) do not apply inward pressure when removing then pull out completely
- Using a trim tool dislodge the clip (location shown by arrows in below images)
- The quarter panel can now be completely removed.



Padded armrest removal:

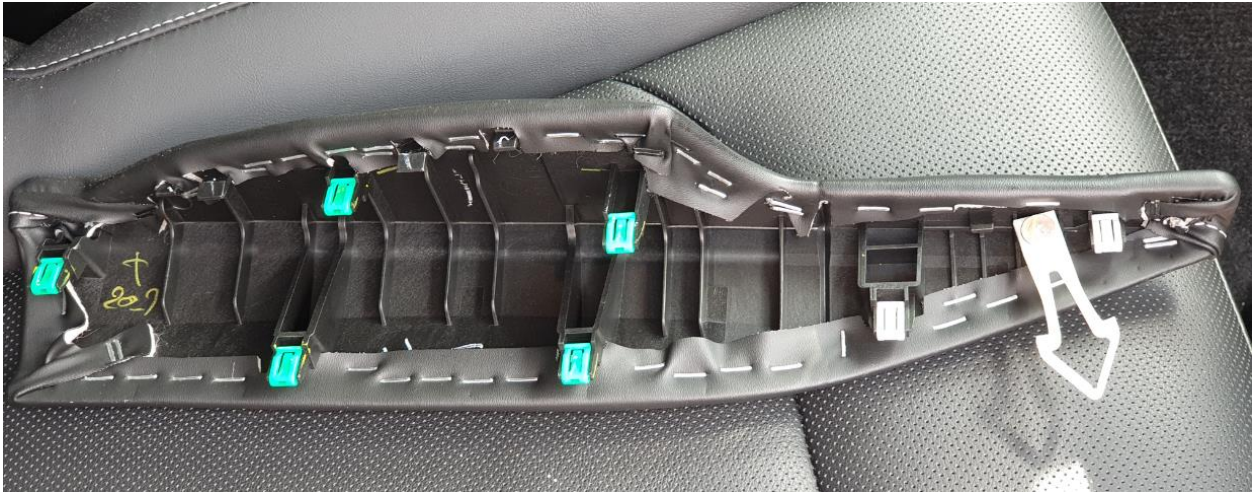
- Insert a trim tool between the start of the padded armrest and window switch fascia then work your way along to release the first two white clips
- In between these two white clips is a retaining tab that needs to have both supports depressed inwards to be able to completely remove, once removed continue working your way down the armrest to dislodge the remaining five green clips



P32 Installation Instructions Mirror & Window Module



- Remove any clips left in the door panel and place them back into position on the armrest.



Window switch assembly removal:

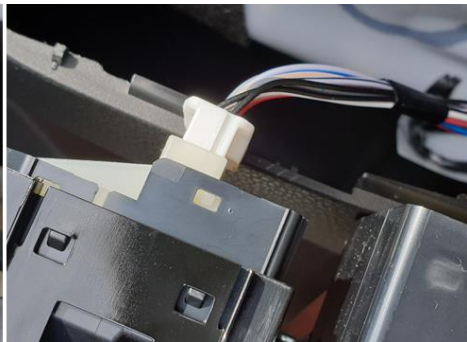
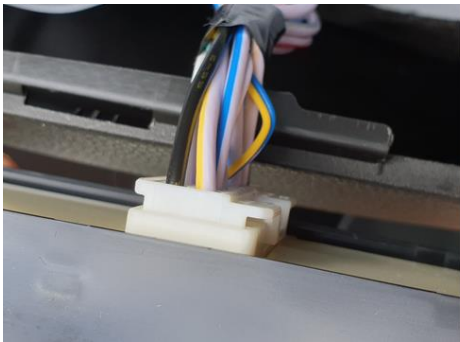
- Start by inserting a trim tool between the back of the window switch fascia and door panel, then working your way forward up the full length to completely dislodge the window switch fascia from the door panel
- The front of the switch fascia has a retaining lug holding it into position, so lift the switch fascia from the rear in an upwards arc to dislodge



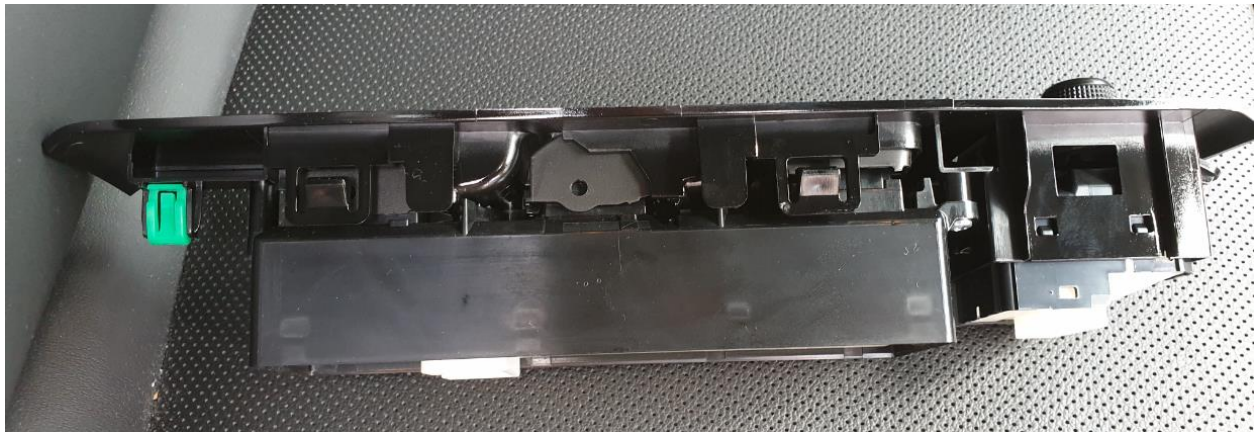
P32 Installation Instructions Mirror & Window Module



- The switch fascia assembly can now be pulled out and turned upside down to gain access to the two connectors



- To remove the connectors from the underside of the switch assembly, push the connector central locking tabs inwards and then remove.



P32 Installation Instructions Mirror & Window Module

Door panel (card) removal:

For D-Max owners:

1. Remove the cover under the door latch using the provided trim tool to gain access to the single Philips screw (PH1)



For BT-50 owners the following additional steps are required:

1. First remove the large silver fascia by inserting the trim tool under it and working your way around the outer edges to dislodge, it's held in place by a number of clips (refer below mages)
2. Then remove the cover under the door latch using the provided trim tool to gain access to the single Philips screw (PH1)

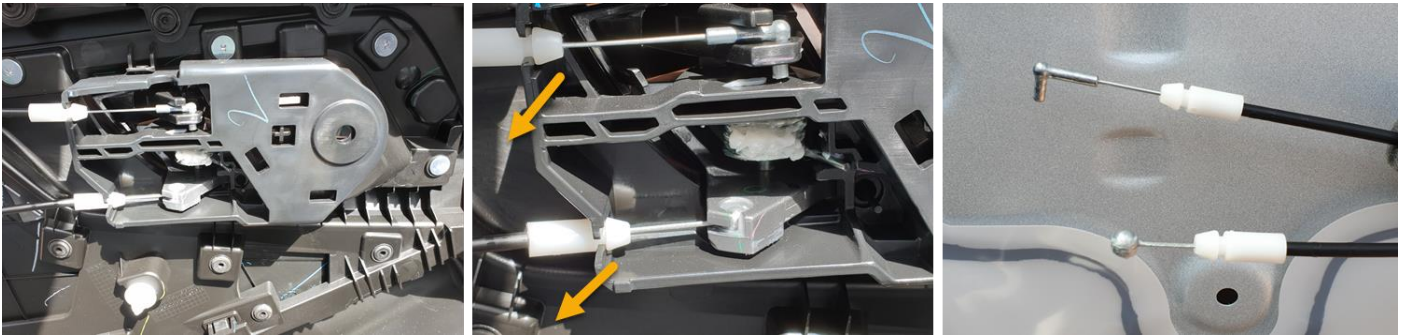


- The two (larger) Phillip's screws from under the armrest and switch fascia for all models can be removed



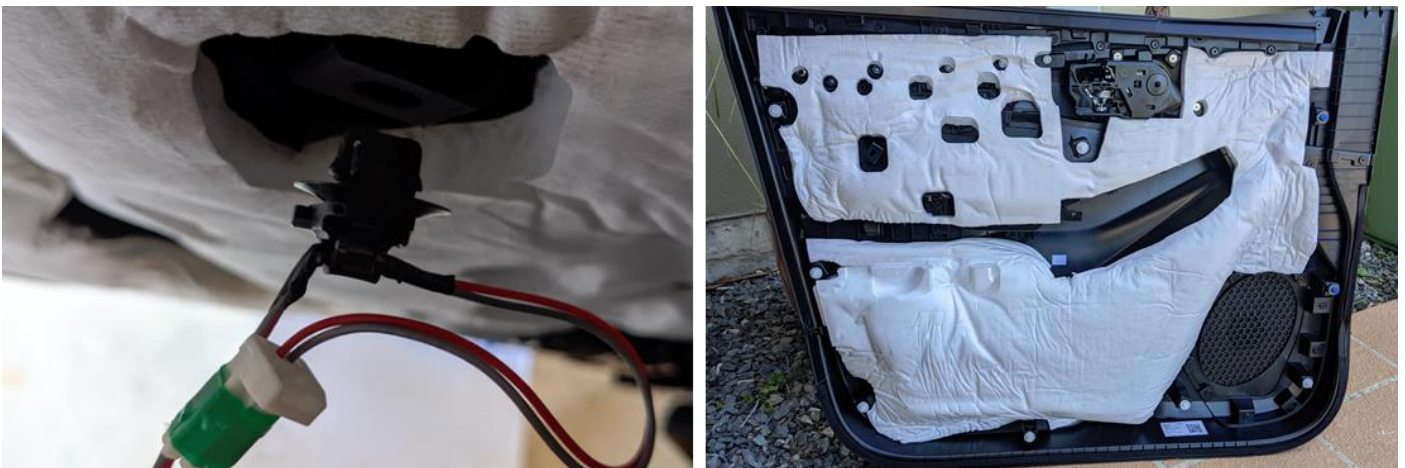
P32 Installation Instructions Mirror & Window Module

- Remove the door panel by pulling away from the door frame, starting just above the speaker and working your way down around the bottom of the door and up the right-hand side then on the left side
- The door card needs to be lifted off the door seal. **NOTE:** If the entire door seal is removed with the door card, take it off the door card and replace back onto the top of the door frame (felt facing the glass)
- Disconnect the two cables – lock and door release by first unclipping the white retaining fastener, then removing them from their respective fixtures.



For the MU-X:

- Remove the ambient lighting retaining clip from the back of the door card it needs to be rotated 90 degrees to remove it from the panel. **NOTE:** For MU-X models that do not have ambient lighting the connector is taped to a retaining clip on the door card
- Disconnect the ambient lighting two pin connector.



- The door card can now be put aside, if any plastic clips have remained in the door panel remove them now and place back into their respective positions on the door card.

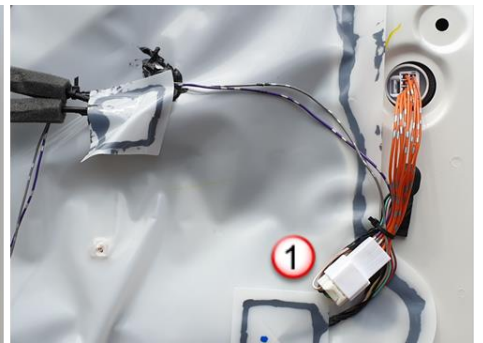
Wiring harness installation:

1. Central locking connector
2. Mirror connector
3. Window switch connector

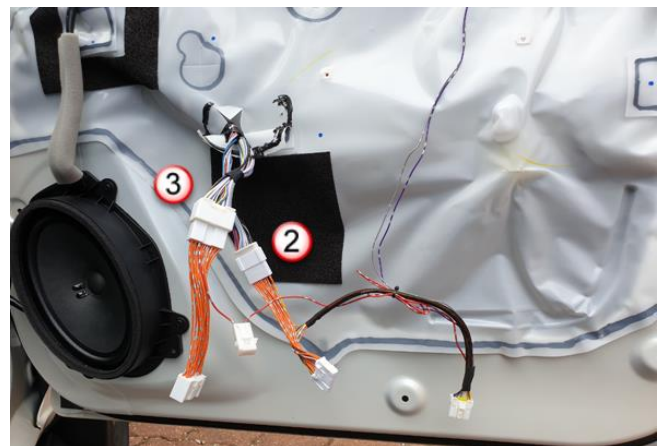
P32 Installation Instructions Mirror & Window Module



- Remove the factory central locking connector (1) by depressing the locking tab inward and pulling completely out
- Connect the patch harnesses to the corresponding factory connectors
- Cable tie in position **NOTE:** If this connector is not positioned as shown it may obstruct the door card upon re-fitment
- Route the two wires grey & purple above the control cables and affix to one with a cable tie



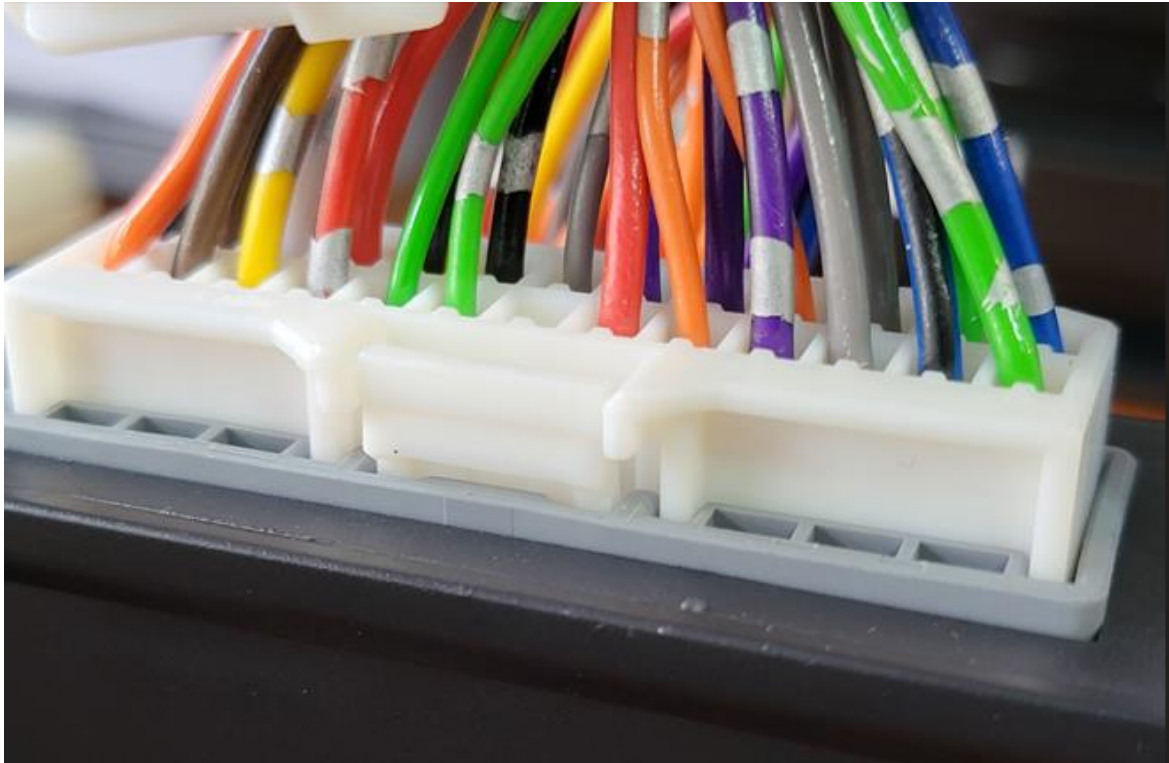
- Connect the module mirror patch harness (2) to the factory mirror connector
- Connect the module window patch harness (3) to the factory window connector.



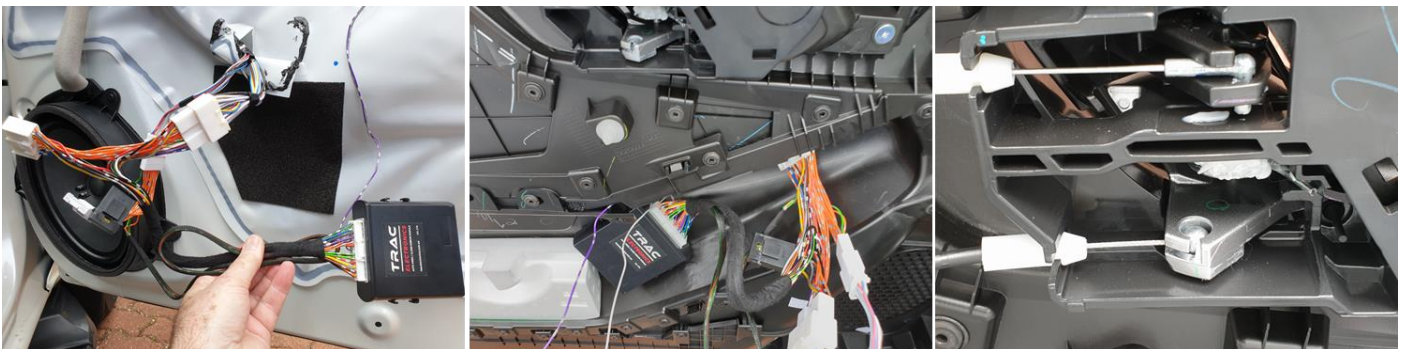
P32 Installation Instructions Mirror & Window Module

Reassembly:

- Attach the hook and loop adhesive pad to the back of the module
- Fit the twenty-six-pin connector to the mirror/window module, ensuring it is inserted evenly and fully locked into place. **If this connector is not securely locked into place it will cause intermittent operation of windows and mirrors.**



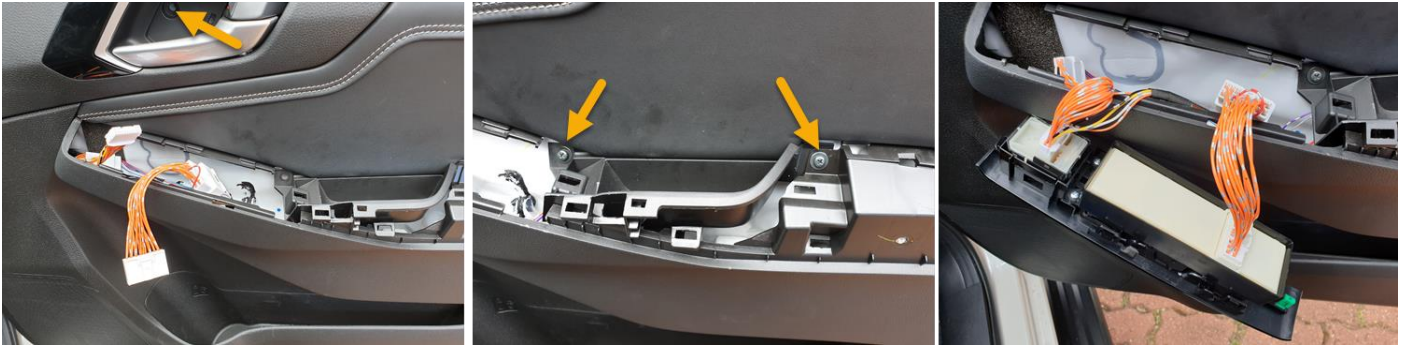
- Attach the mirror/window module to the back of the door panel just below the armrest, **DO NOT** fit the module behind the waterproof sheeting (wet side) the module is to be fitted in a dry location.
- Feed the two module patch harnesses out through the front of the door card ready for the switch to be fitted
- Refit the door release and lock cables into their respective fixtures **NOTE: Ensure they are both securely locked back in place**



- Position the door card on top of the door seal first and then locate all the clips into their respective positions then working your way around the door card, pushing them all back into place, **then with the door still open test the door latch and door lock to ensure they are both working correctly**

P32 Installation Instructions Mirror & Window Module

- Refit the three Phillips screws
- Fit the window switch assembly to the corresponding connectors of the module patch harness



- Position the window switch fascia front end first so it engages the locating lug and lower back into place



- Ensure all cables and connectors are not positioned to obstruct the switch assembly from fitting correctly, **if any obstructions are placed on the switch connectors** this may affect the operation of the switches.

Test:

- Test mirror and all window operation before continuing
- Turn ignition on and lower windows
- Ensure the auto fold button located on driver's side armrest is in the off position (mirrors extended)
- Close **all doors** and lock, both side mirrors will fold in, and window will close
- Unlock, both side mirrors will fold out
- If mirrors / windows do not function correctly remove switch fascia assembly and retest, if still not functioning remove door card and check all connections and fuse.
- Refit the padded armrest by first aligning the large white tab under the padded armrest back into position
- Align the clips of the padded armrest into the door panel and press them all back into place
- Refit the plastic cover behind the door handle
- **For BT-50 owners** replace the large silver fascia back into place.

Quarter Panel fitment:

- Align the clip into the door frame and push back into place

P32 Installation Instructions Mirror & Window Module

- Refit the plastic screw.



Module Function:

- Lock doors using key remote, both mirrors fold in, unlock doors using key remote both mirrors fold out. Mirror fold button on armrest operates normally when ignition is on and overrides auto fold mirror functions
- Windows will be automatically closed if left open after the ignition has been turned off and the doors locked using the key remote. In addition, windows can be controlled remotely by the key remote to open and close or pause during operation
- Transforms all the existing window switches on the driver's side to one touch open / close.

NOTE: The rear lock switch on the driver's window can still be used to lock the rear window and front passengers from opening/closing.

- When in the locked position the rear windows and front passenger are isolated from all functions of the auto window module functions. Only the front driver's window will automatically close/open
- For full remote control of all windows the rear lock switch on the driver's window is required to be in the off position

Operating features:

1. Auto window up:

After ignition is off and doors closed, press lock on the key remote, the back two and front two windows will close successively, if left down after ignition is turned off.

2. Using the key remote to lower all windows vehicle remains unlocked:

When engine is off and doors are closed, press unlock-lock-unlock the front two then the back two windows will lower. To lock doors after this function, press lock on the key remote, to lock and close all windows press lock again at any interval.

3. Pausing window opening / closing:

Press lock or unlock on the key remote during auto window operation, all windows will pause.

4. When ignition is on all windows become one touch auto up/down function from the driver's window switch panel by depressing each individual switch for half a second.

5. All windows will retract down slightly:

After ignition is off and doors are closed, press lock-unlock-lock on the key remote, all windows will lower a very small amount for ventilation.

P32 Installation Instructions Mirror & Window Module

6. Lock vehicle without closing windows:

After ignition is off and all doors are closed, press unlock-unlock-lock, only locks the vehicle without lifting the windows.

7. Auto folding the side mirrors when locking the car:

After ignition is off and all doors are closed, press lock on the key remote, both side mirrors will automatically fold in.

8. Auto unfolding the side mirrors when unlocking the vehicle:

When vehicle is already locked, press unlock on the key remote, both side rear view mirrors will automatically fold out.

Your feedback on these installation instructions is welcome, if you believe there is additional information required, or incorrect please contact us at info@tracelectronics.com.au

P32 Installation Instructions Mirror & Window Module

Copyright ©2023 Trac Electronics all rights reserved the publication of these instructions in any form including images is not permitted without prior written consent from Trac Electronics Pty Ltd.