

# Installation Instructions Auto Folding P71 Mirror Module

# TRAC

## ELECTRONICS

Email: [info@tracelectronics.com.au](mailto:info@tracelectronics.com.au)

Website: <https://tracelectronics.com.au>

Model # P71

May 2022

### Suitable for the Toyota Hilux SR5 model 2016 - onward

**Module Function:** Lock doors using key remote, both mirrors fold in, unlock doors using key remote both mirrors fold out. Override button on dash above mirror directional switch operates normally when ignition is on.

**The module can be configured to unfold the mirrors when the vehicles is unlocked or when the ignition is on**

The default is mirrors will unfold when the vehicles is unlocked using the key remote.

To change to unfold only when the vehicles ignition is turned on, cut (at any point) and isolate both ends of the grey wire on the modules harness.



#### System includes:

- P71 Mirror Module
- Harness with direct plug & play connectors
- Adhesive pad (hook & loop) to attach module to inside of door panel (card)

#### Additional tools required:

- Phillips screwdriver (PH1)
- Trim tool

**NOTE:** This module is only suitable for vehicles fitted with factory fitted electric folding mirrors. If your vehicle does not have factory fitted electric folding mirrors the module will **NOT** function.

**NOTE:** Read full instructions before commencing installation.

First test the existing electric mirror function before starting this installation.

1. Turn on the ignition
2. Press the auto fold button located on drivers side armrest above the window switches if operating correctly both mirrors will fold in, press the button again they should completely fold out. If they do not function in this way then the module will not operate correctly. Do not proceed with installation until they operate accordingly
3. Lower driver's side window completely.



# Installation Instructions Auto Folding P71 Mirror Module

## Tweeter removal:

- Using a trim tool dislodge the two clips (locations shown by arrows in below images)
- Remove the connector by pressing down on the connector tab and pulling out
- The tweeter can now be completely removed.



## Padded armrest removal:

- Insert a trim tool between the padded armrest and door panel working your way along the full length of the padded armrest until it has been dislodged from all its fixing points



- Before the padded armrest can be completely removed you will need to lift the white retaining clip by pressing it upwards



- The padded armrest can now be completely removed.

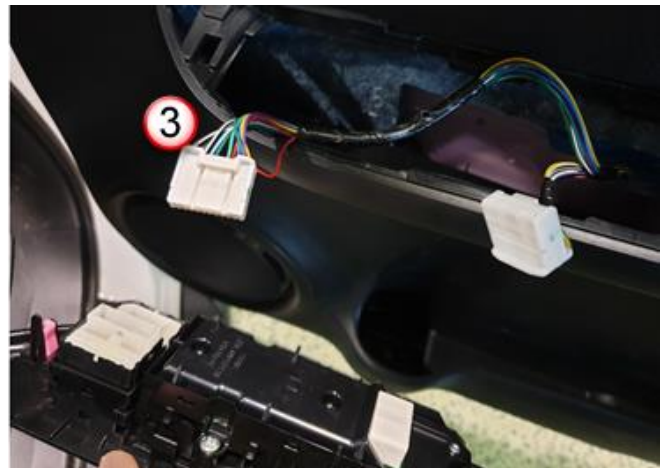
# Installation Instructions Auto Folding P71 Mirror Module

## Window switch removal:

- Insert a trim tool between the window switch fascia and armrest, working your way the full length to completely dislodge the window switch fascia from the door panel



- To remove the connectors from the underside of the switch assembly, push the tabs inwards and then remove the two connectors.



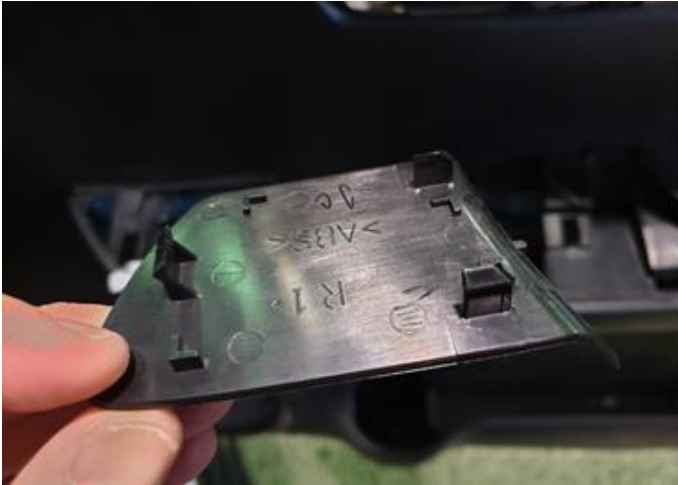
## Door panel (card) removal:

- Remove the cover under the door latch using the provided trim tool to gain access to the single Philips screw (PH1)





# Installation Instructions Auto Folding P71 Mirror Module



- Remove the single Phillip's screw from inside the door handle
- Remove the two Phillip's screws from inside the armrest
- Work your way around the door panel to dislodge all eight clips from the door frame



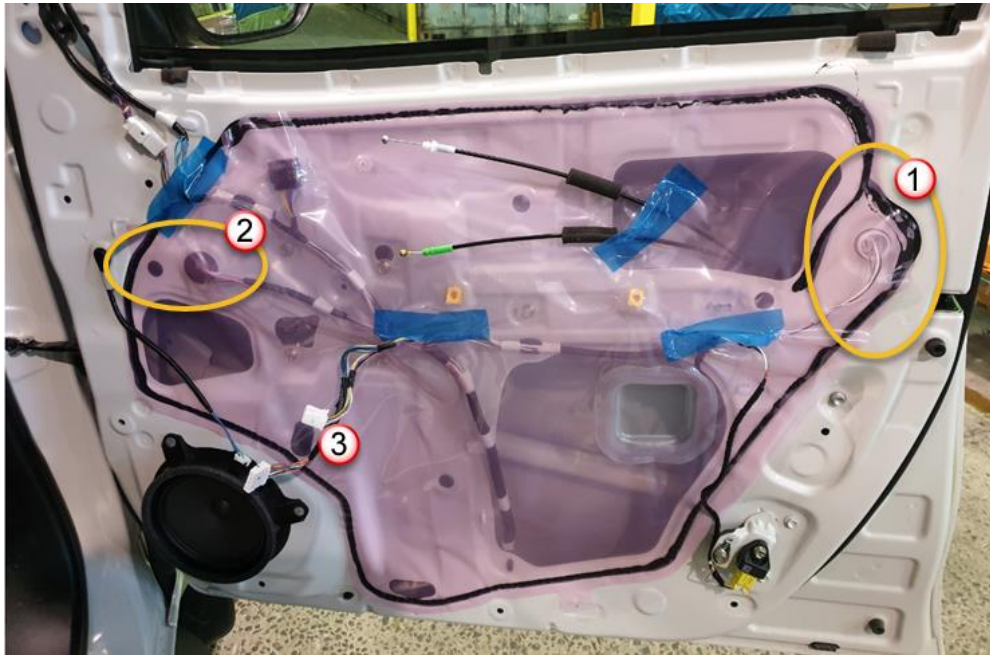
- The door panel can now be lifted off the door frame to gain access to the rear to remove the two cables from the door latch and lock mechanism
- Remove both cables from their mounting positions by unclipping them, then disconnect from the door handle and lock assembly: White is the door lock (top) green is the door handle release (bottom)



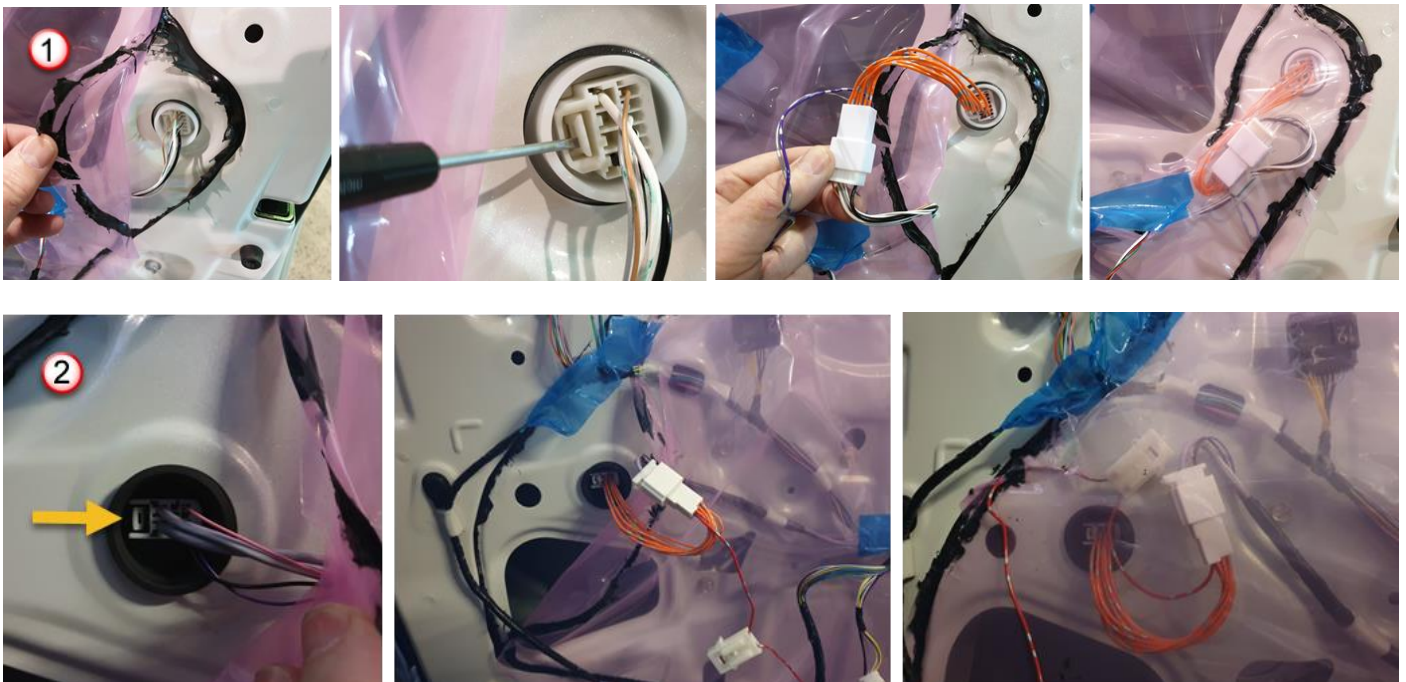
- The door panel can now be completely removed.

# Installation Instructions Auto Folding P71 Mirror Module

## Wiring harness installation:



- Peel back the clear plastic around connectors ① and ②
- Remove the factory connectors by depressing the locking tabs and pulling completely out
- Connect the patch harnesses to the factory connectors as shown
- Reattach the clear plastic cover



- Attach the hook and loop adhesive pad to the back of the module
- Fit the sixteen-pin connector to the mirror module
- Attach the mirror module to the back of the door panel just below the armrest. **DO NOT** fit behind the waterproof plastic barrier, as moisture will damage the electronics of the module.



# Installation Instructions Auto Folding P71 Mirror Module

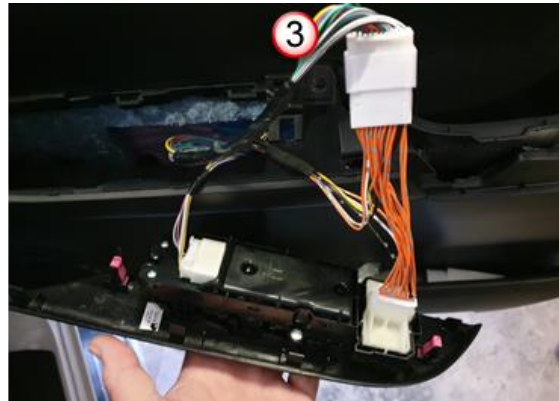
## Reassembly:

- Attach the door latch and lock cables to the handle assembly : White is the door lock (top) and green is the door handle release (bottom)
- Click both back into place
- Place the door panel so it just sits on the top of the window channel.



## Window switch fitment:

- Feed all the loose connectors out through the top of the armrest
- Refit the door panel back into the door frame, working your way around until all clips are fitted into place
- Refit the factory window connector to the switch assembly
- Connect the patch harness to the factory mirror connector ③ and then the patch harness to the switch assembly



- Refit the window switch fascia assembly back into the armrest until it fully clicks back into place
- Refit the two Phillip's screws into the armrest and the one Phillip's screw behind the door handle
- Refit the padded armrest by first aligning the white tab under the padded armrest back into position



## Installation Instructions Auto Folding P71 Mirror Module

- Align the clips of the padded armrest into the door panel and press them all back into place
- Refit the plastic cover behind the door handle.



**Tweeter fitment:**

- Refit the connector to the tweeter
- Align the two clips into the door frame and push back into place.



**Test:**

- Ensure the auto fold button located on driver's side armrest is in the off position
- Close **all doors** and lock using the key remote, both side mirrors will fold in
- Unlock using the key remote, both side mirrors will fold out (default setting).

Your feedback on these installation instructions is welcome, if you believe there is additional information required, or incorrect please contact us at [info@traceelectronics.com.au](mailto:info@traceelectronics.com.au)

Copyright ©2022 Trac Electronics all rights reserved the publication of these instructions in any form including images is not permitted without prior written consent from Trac Electronics Pty Ltd.